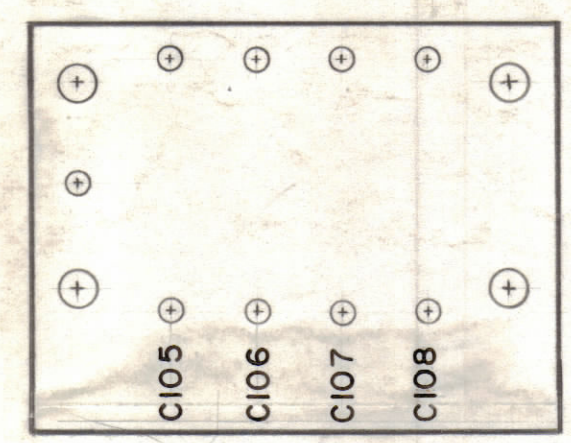


HOLES -  
A - .116 DIA. 9 REQ.  
B - .189 DIA. 4 REQ.

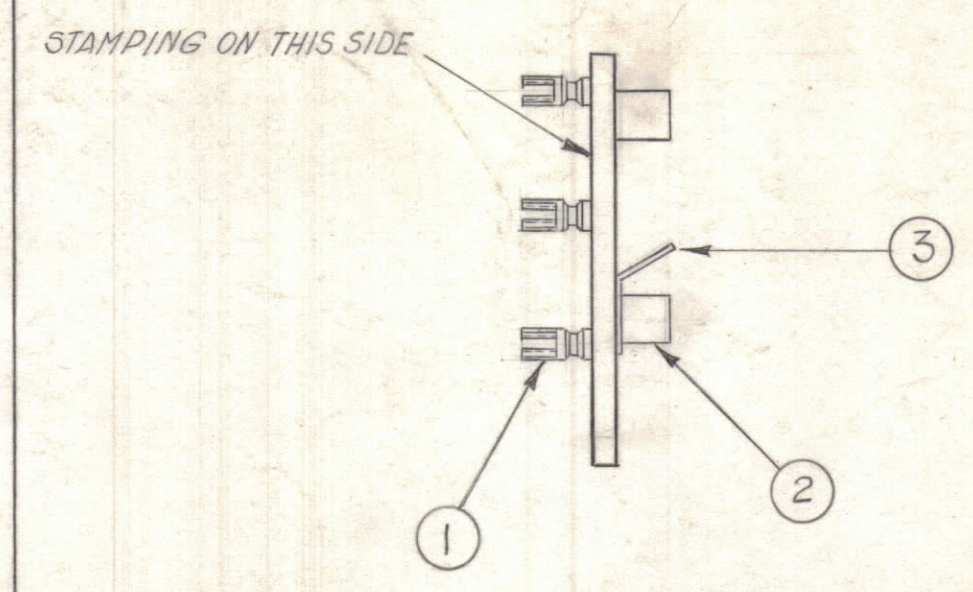
STAGE 1  
MACHINING  
A-2177-1

MATERIAL: 1/8 THICK, PHENOLIC XXXP, NATURAL

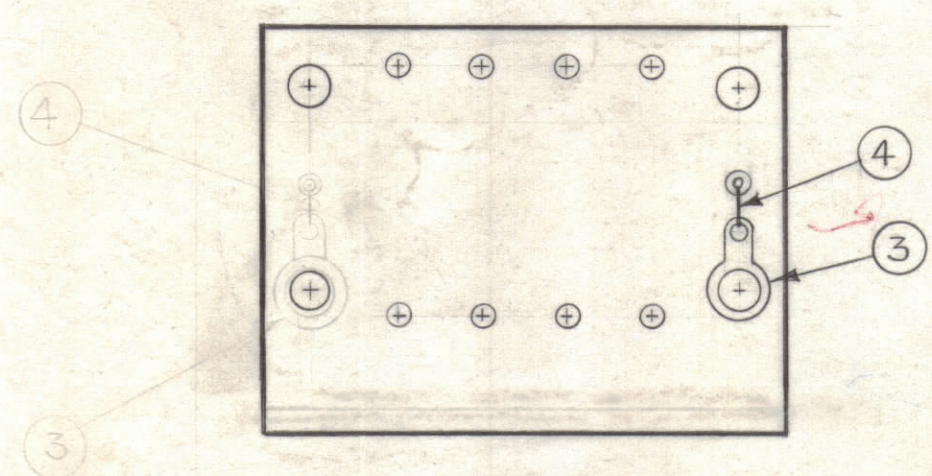
NOTE ~  
ALL LETTERING TO BE 1/8 HIGH  
BLACK GOTHIC



STAGE 2  
STAMPING  
A-2177-2

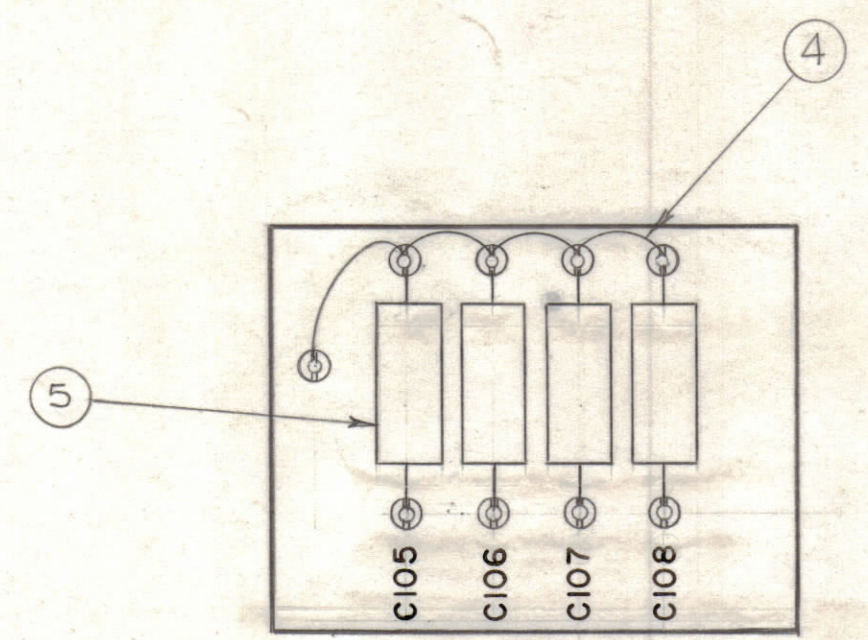


STAGE 3  
SUB-ASS'Y  
A-2177-3



BOTTOM VIEW SHOWN

STAGE 4  
ELECTRICAL ASS'Y  
A-2177-4



TOP VIEW SHOWN

X	6	BS-100	SOLDER, SOFT
4	5	CM35B103K	CAPACITOR FIXED MICA
X	4	WL-100-7	WIRE, BUSS BAR #22
1	3	TE-110-5	TERMINAL, LUG
4	2	TE-108-3	STANDOFF, RIVET TYPE
9	1	TE-109-3	SPLIT TERMINAL LUG

REQ. ITEM	PART NO.	DESCRIPTION	SYMBOL
THE TECHNICAL MATERIEL CORP. MAMARONECK, NEW YORK			
CAPACITOR TERMINAL BOARD ASS'Y			
G.D.L.		H.L.	28/EP
DRAWN		CHECKED	FINAL APPROVAL
AA		AK	A-2177
FINISH & SPEC. NO.		ELEC. DES. APP.	MECH. DES. APP.
		SHEET OF	

A	D7	ITEMS 3 & 4 RELOCATED	3.2664	11138	WB	@	QD
B2		ITEM 3 WAS TE-132					
SYM	ZONE	DESCRIPTION	DATE	CH. NO.	DRAFTS	CHECKER	ENG. APP.
UNLESS OTHERWISE SPECIFIED:			SCALE				
DIMENSIONS ARE IN INCHES			MAXIMUM ALLOWABLE TOLERANCES HAVE BEEN DETERMINED AND ANY DEVIATIONS WILL BE CAUSE FOR REJECTION. REMOVE ALL BURRS & SHARP EDGES				
TOLERANCES ON FRACTIONS ± 1/64			DECIMALS ± .005			ANGLES ± 1/2°	

1	TER-25K-50			9-25-61
REQ. PER UNIT	MODEL	SECTION	ASS'Y. NO.	DATE
USED ON				