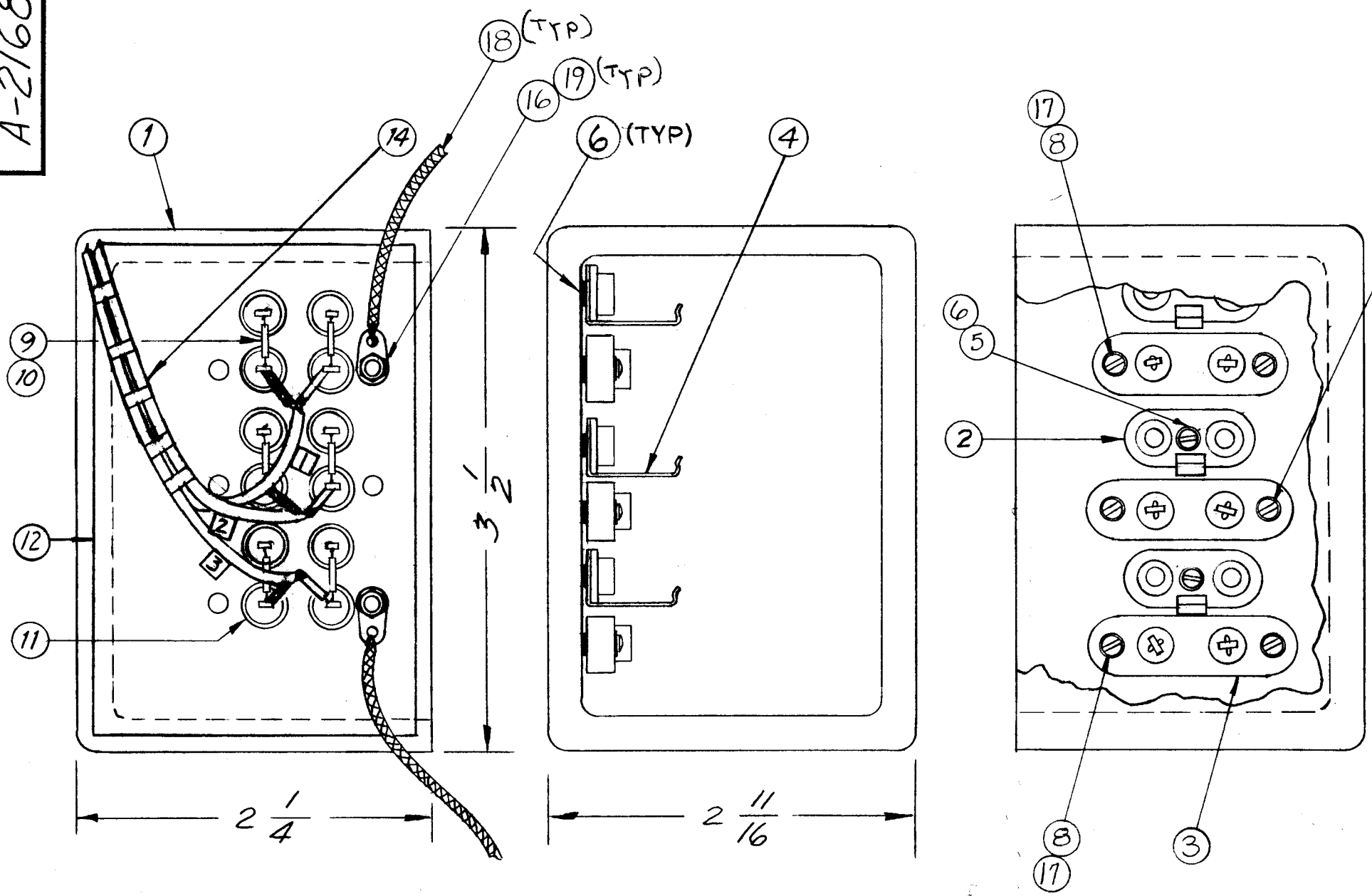


A-2168



2	19	NTH0440BN6	NUT, HEX	
12"	18	WL-103-2	SHIELD, FLEXIBLE	
2	17	SCBP0440BN12	SCREW, MACHINE	
2	16	TE-104-1	TERMINAL, LOCKING	
X	15	BS-100	SOLDER, SOFT	
1	14	CA-642	CABLE, CRYSTAL, OVEN	
-	13	DELETED		
1	12	IM-203	INSULATION, CRYSTAL OVEN	
3"	11	PX-104-5-.234	INSULATION SLEEVING	BROWN
2 1/4"	10	PX-104-4-.034	INSULATION SLEEVING	GREEN
X	9	WL-100-7	WIRE BUSS BAR	
6	8	LWS04MRN	LOCKWASHER	
4	7	SCBP0446BN10	SCREW, MACHINE	
18	6	WA-109-17	WASHER, FIBER	
3	5	SCBP0440BN6	SCREW, MACHINE	
3	4	FP-109	CLAMP, XTAL	
3	3	TS-105-1	SOCKET, XTAL	
3	2	TS-104-1	SOCKET, XTAL	
1	1	PM-118	MACHINING, XTAL OVEN	

E	IT. 19 P/N WAS NTH0440BN6	8-9-66	16724	RME	<i>[Signature]</i>	<i>[Signature]</i>
D	IT. 14 WAS QTY 9 WA-101-1	9-28-64	12470	RF	<i>[Signature]</i>	<i>[Signature]</i>
C	ITEM (5) WAS SCBS0440BNG ITEM (7) WAS SCBS0440BN10, 6 REQ. ITEMS (16) TO (19) ADDED	10-2-62	7389	RF	<i>[Signature]</i>	<i>[Signature]</i>
B	Item (14) Pict. Clarified	11-3-61	5793	RU	<i>[Signature]</i>	<i>[Signature]</i>
A	ITEM 14 WAS CA-642-1 ITEM 13 (CA-642-2) DELETED ITEM 12 WAS CA-642-3	10/30/61	5772	EB	<i>[Signature]</i>	<i>[Signature]</i>
SYM	DESCRIPTION	DATE	CH. NO.	DRAFTS	CHECKER	ENG. APP.

UNLESS OTHERWISE SPECIFIED:
 DIMENSIONS ARE IN INCHES
 TOLERANCES ON
 FRACTIONS ± 1/64 DECIMALS ± .005 ANGLES ± 1/2°

SCALE:
 MAXIMUM ALLOWABLE TOLERANCES HAVE BEEN DETERMINED AND ANY DEVIATIONS WILL BE CAUSE FOR REJECTION.
 REMOVE ALL BURRS AND SHARP EDGES

1	GPE-1			9-27-61
REQ. PER UNIT	MODEL	SECTION	ASS'Y. NO.	DATE
USED ON				

REQ. ITEM	PART NO.	DESCRIPTION	SYMBOL
THE TECHNICAL MATERIEL CORP. MAMARONECK, NEW YORK CRYSTAL OVEN CASE ASSEMBLY			
STOCK SIZE			
MATERIAL			
TYPE & TEMPER	HEAT TREAT. SPEC.	DRAWN	CHECKER
		<i>[Signature]</i>	<i>[Signature]</i>
FINISH & SPEC. NO.		ELEC. DES. APP.	MECH. DES. APP.
			A-2168
			E