

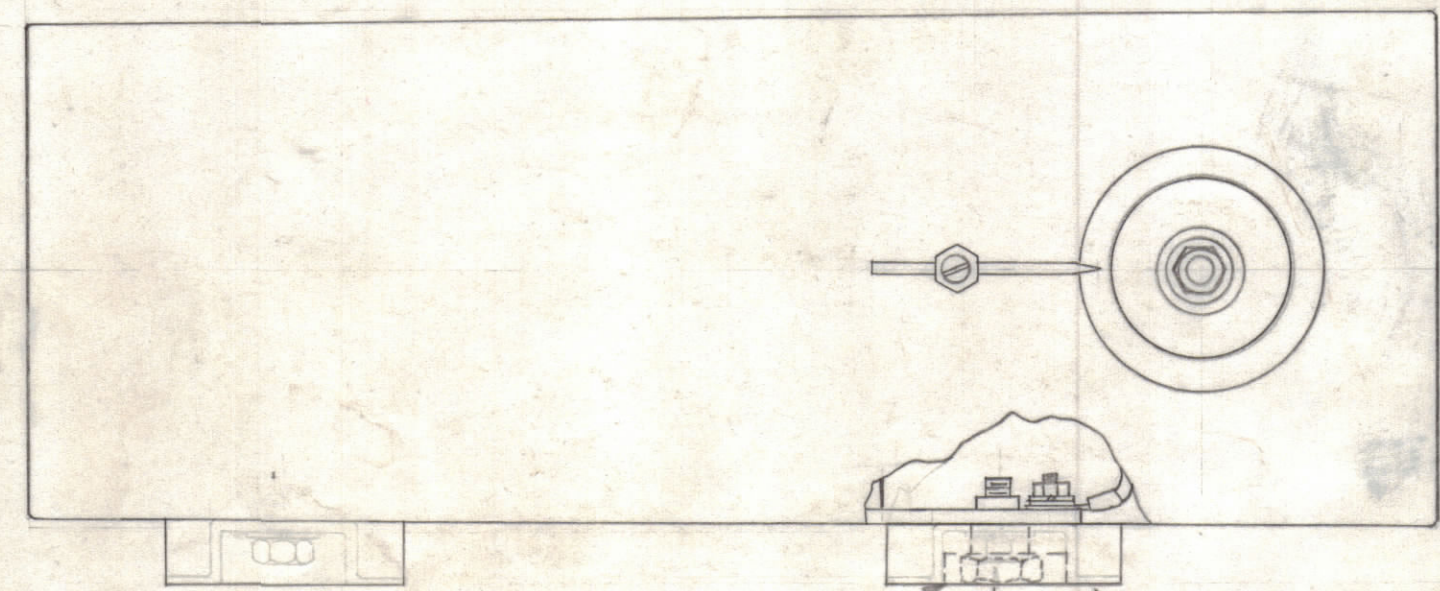
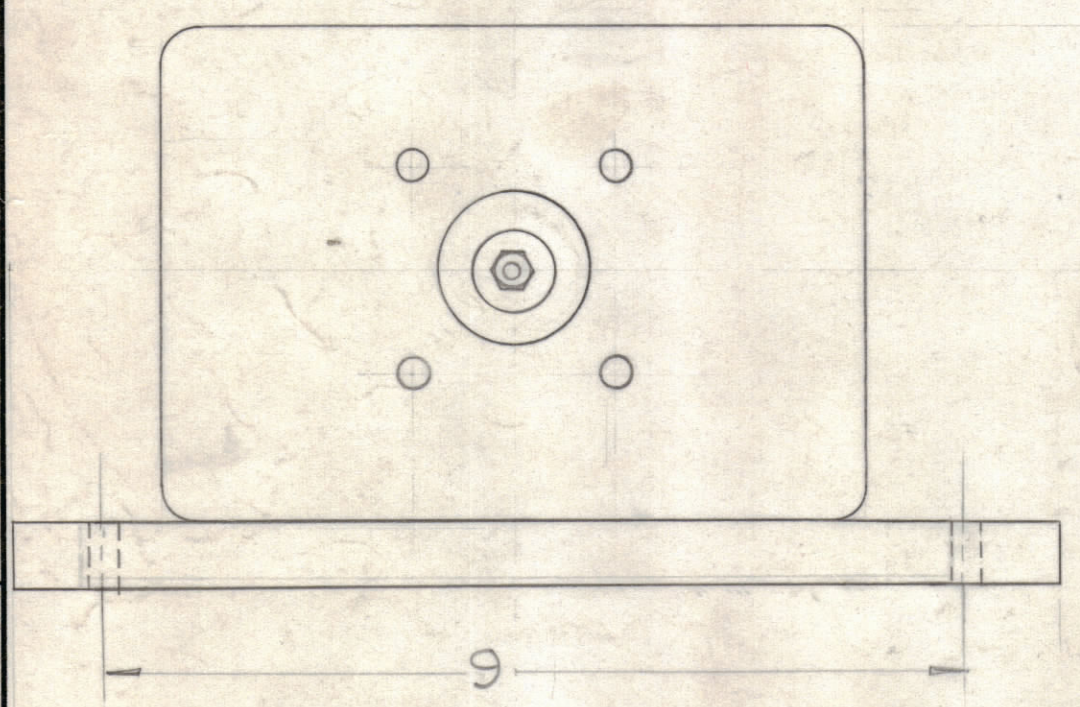
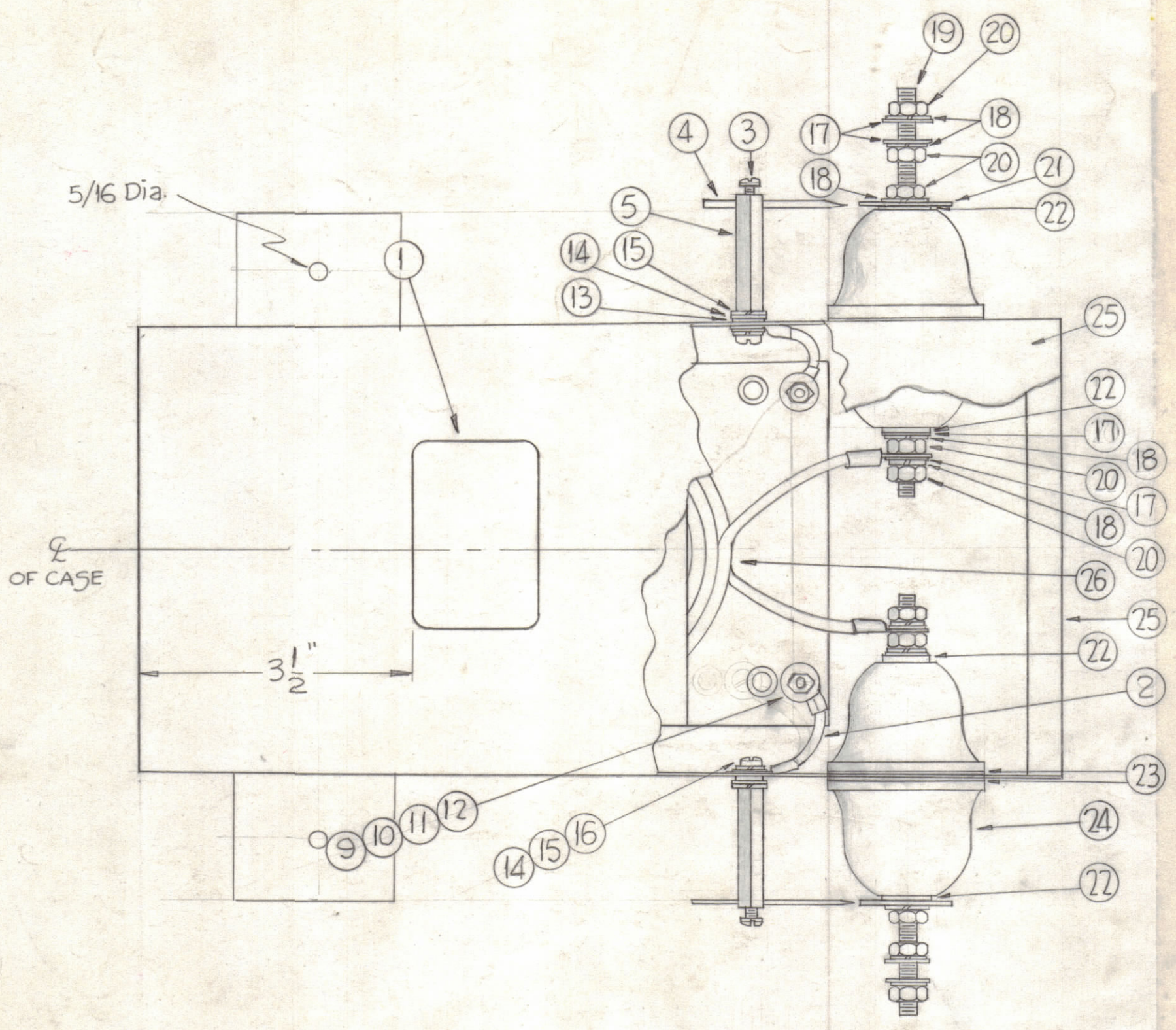
NOTICE TO PERSONS RECEIVING THIS DRAWING

THE TECHNICAL MATERIEL CORPORATION claims proprietary right in the material disclosed hereon. This drawing is issued in confidence for engineering information only and may not be reproduced or used to manufacture anything shown hereon without permission from THE TECHNICAL MATERIEL CORPORATION to the user. This drawing is loaned for mutual assistance and is subject to recall at any time.

Property of:
THE TECHNICAL MATERIEL CORPORATION
MAMARONECK, NEW YORK

POTTING INFORMATION

1. USE SLEEVE TO PROTECT BOLT IN THE END OF THE CASE.
2. POUR POTTING COMPOUND GL-123 TO WITHIN 3/2 INCHES FROM THE TOP.
3. AFTER SETTING, REMOVE SLEEVE AND SEAL THE COVER WITH EPOXY RESIN.



4 COUNTERBORED HOLES TO BE FILLED W/EPOXY RESIN AFTER ASS'Y.

REQ. ITEM	PART NO.	DESCRIPTION	SYMBOL
X 27	GL-123	POTTING COMPOUND	
1 26	TR-167	TRANSFORMER, R.F.	
1 25	PX-613	CASE AND COVER	
4 24	NS-115	CAP, INSULATING	
4 23	GA-126	GASKET, INNER	
4 22	GA-151-1	GASKET, SHOULDER	
2 21	PM-723	CONTACT, SPARK GAP	
10 20	NTH3118NR16	NUT, HEX	
2 19	SM3118NP5.750	ROD, THREADED	
10 18	LWS31MNR	LOCKWASHER, SPLIT	
8 17	FW31HNR	WASHER, FLAT	
2 16	SCBP0832NR12	SCREW, MACHINE	
4 15	LWS08MNR	LOCKWASHER, SPLIT	
4 14	FW08HNR	WASHER, FLAT	
2 13	GA-137-3	GASKET, NEOPRENE	
2 12	SCFP1032BN8	SCREW, MACHINE	
2 11	FW10HRN	WASHER, FLAT	
2 10	LWS10MRN	LOCKWASHER, SPLIT	
2 9	NTH1032BN12	NUT, HEX	
2 8	MS-2680	MOUNTING BRACKET	
4 7	SCHH2520SS14	SCREW HEX HEAD	
4 6	LWS25MSS	LOCKWASHER, SPLIT	
2 5	PM-721-2NR1.87	POST	
2 4	PM-724-1NR	SPARK ROD	
2 3	SCBP0632NR5	SCREW, MACHINE	
2 2	CA-409-68-2.00	GROUND STRAP ASSEMBLY	
1 1	NP-412	NAMEPLATE, IDENTIFICATION, ADHESIVE	

SYM	ZONE	DESCRIPTION	DATE	CH. NO.	DRAFTS	CHECKER	ENG. APP.
E		IT (19) WAS SM3118NR5.750	3-24-64	13767	AM	TR	
D	E2	ITEM (19) WAS SM3118NR5.25	2-10-64	10867	AM	TR	
C	B2	ITEM (1) WAS NP-222-3	9-11-62	7326	SP	TR	
B	C-3	ITEM (13) WAS GA-137-5	11-11-61	5855	GDL	TR	
A	E3	ITEM (27) ADDED					
	G-7	NOTE 'POTTING INFORMATION' ADDED	11-11-61	5840	G.D.L.	TR	

UNLESS OTHERWISE SPECIFIED:
DIMENSIONS ARE IN INCHES
TOLERANCES ON FRACTIONS ± 1/64 DECIMALS ± .005 ANGLES ± 1/2°
SCALE: MAXIMUM ALLOWABLE TOLERANCES HAVE BEEN DETERMINED AND ANY DEVIATIONS WILL BE CAUSE FOR REJECTION. REMOVE ALL BURRS & SHARP EDGES

REQ. PER UNIT	MODEL	SECTION	ASS'Y. NO.	DATE
	TRC-5K			10-17-61

STOCK SIZE		MATERIAL		THE TECHNICAL MATERIEL CORP. MAMARONECK, NEW YORK	
FINAL ASSEMBLY					
DRAWN		CHECKED		FINAL APPROVAL	
TYPE & TEMPER		HEAT TREAT. SPEC.		FINISH & SPEC. NO.	
ELEC. DES. APP.		MECH. DES. APP.		SHEET OF	