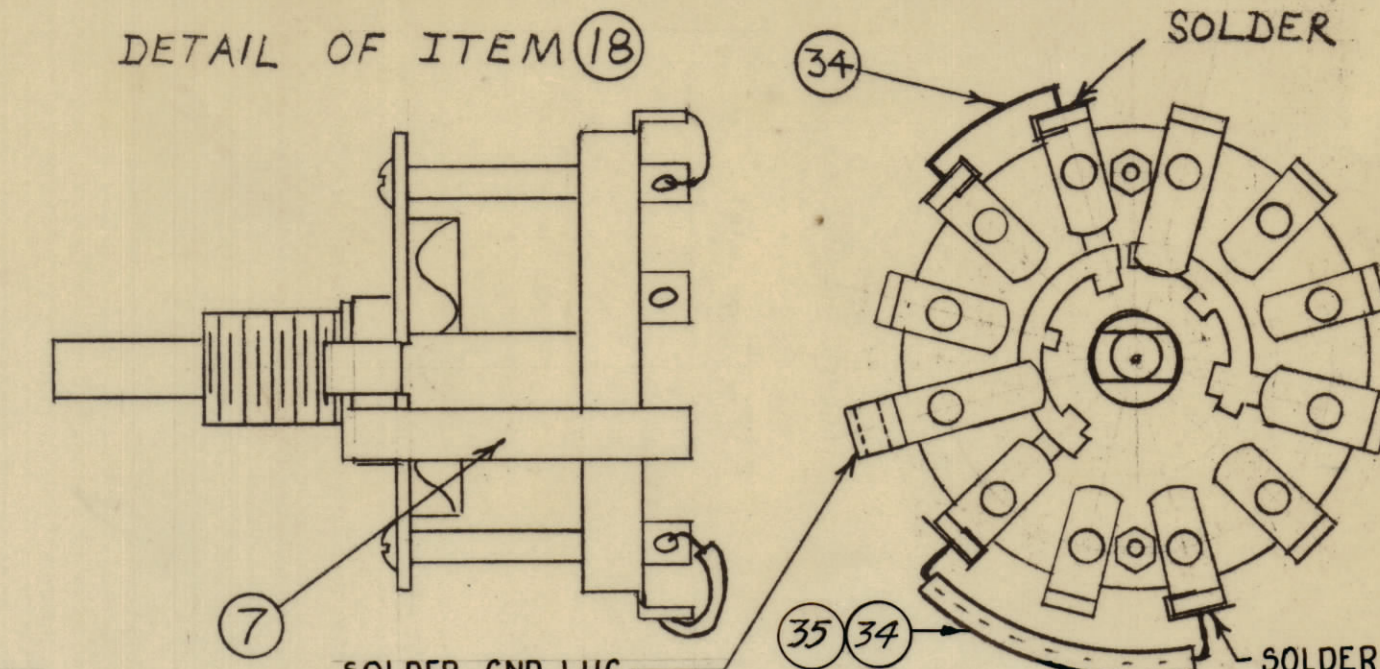
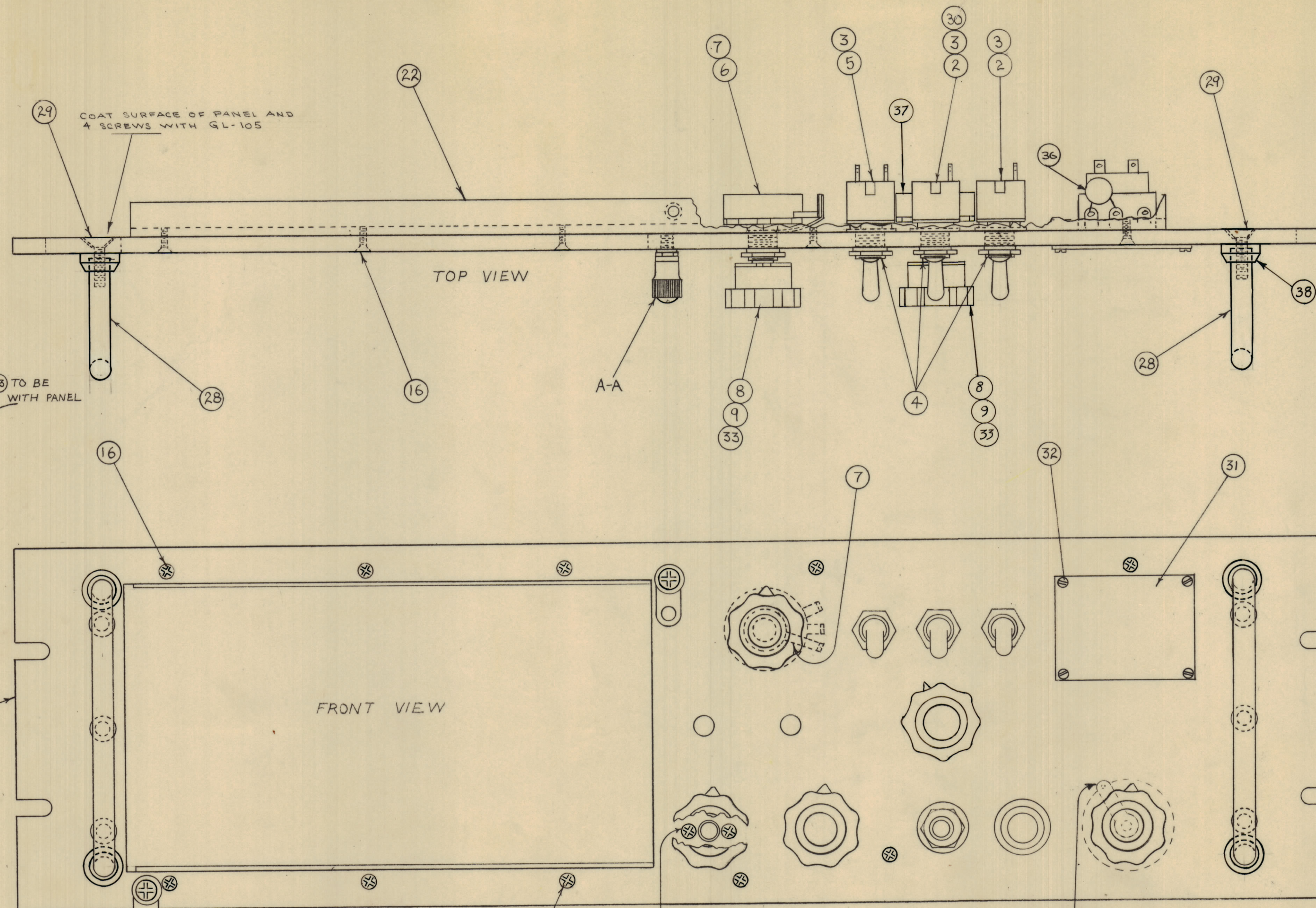
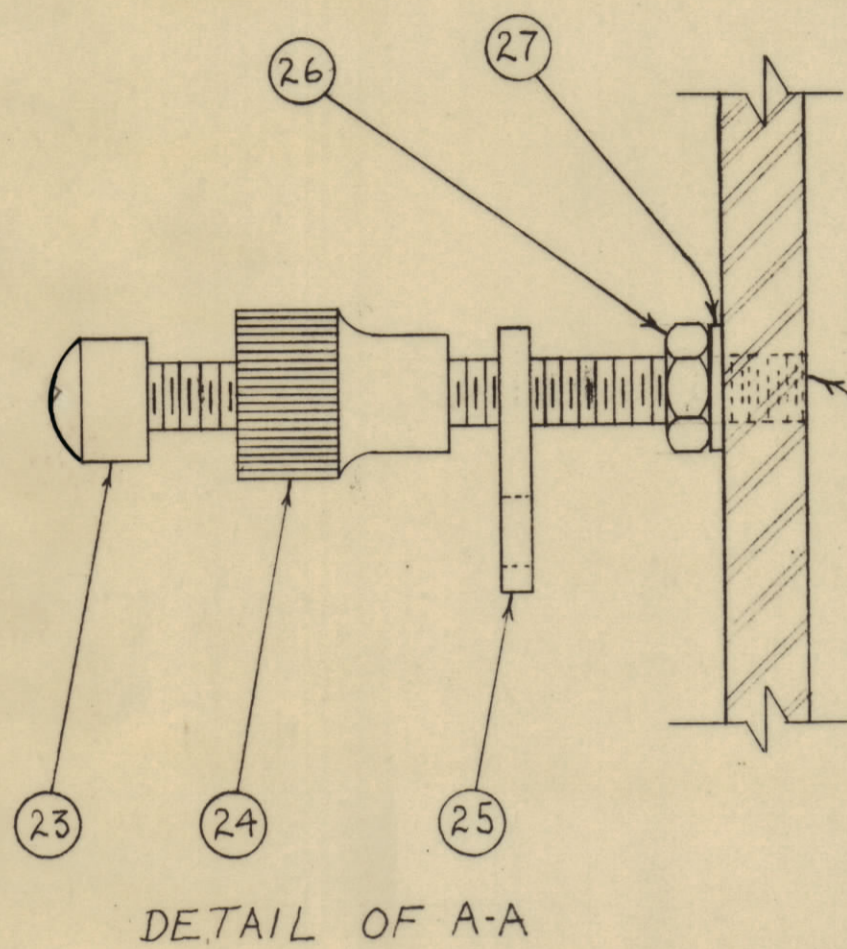


IF IT IS FOUND DESIRABLE TO CHANGE ANY TOLERANCE OR OTHER DETAIL SPECIFIED ON THIS DRAWING NOTIFY THE PURCHASER PROMPTLY.
 MAXIMUM ALLOWABLE TOLERANCES HAVE BEEN DETERMINED AND DEVIATIONS WILL BE CAUSE FOR REJECTION. REMOVE ALL BURRS AND SHARP EDGES.

RELEASED

DETAIL OF ITEM (18)

ITEMS (26) & (27) TO BE LOCKED IN PLACE.



SOLDER GND. LUG

4	38	CU-139-2B	FERRULE, HANDLE	
1	37	RV44TRD252A	RESISTOR, FIXED, COMP.	R155
1	36	CL-100-16	CAPACITOR, FIXED-DISC	C-154
3/4	35	PX-104-1-034	INSULATION, SLEEVING	
2	34	WL-100-7	WIRE: BUSS-BAR, TINNED	
5	33	MP-100-4	KNOB, INSTR. FLUTED TYPE	
4	32	SC-110-1	SCREW, THREAD CUTTING	
1	31	NP-102-5	NAME, PLATE	
1	30	TE-129	GROUND STRIP	
4	29	SCFP1032BNB	SCREW, MACHINE	
2	28	HA-102-2BN	HANDLES	
2	27	LWI10LRN	LOCKWASHER, INT. TOOTH	
2	26	SM-114	NUT, HEX.	
2	25	MS-145	LOCK LINK	
2	24	SM-113	LOCK NUT	

A-2158

-NOTE-

ALL FLAT HEAD SCREWS ON FRONT PANEL ARE TO BE PAINTED WITH SMOOTH GREY ENAMEL (S-115).

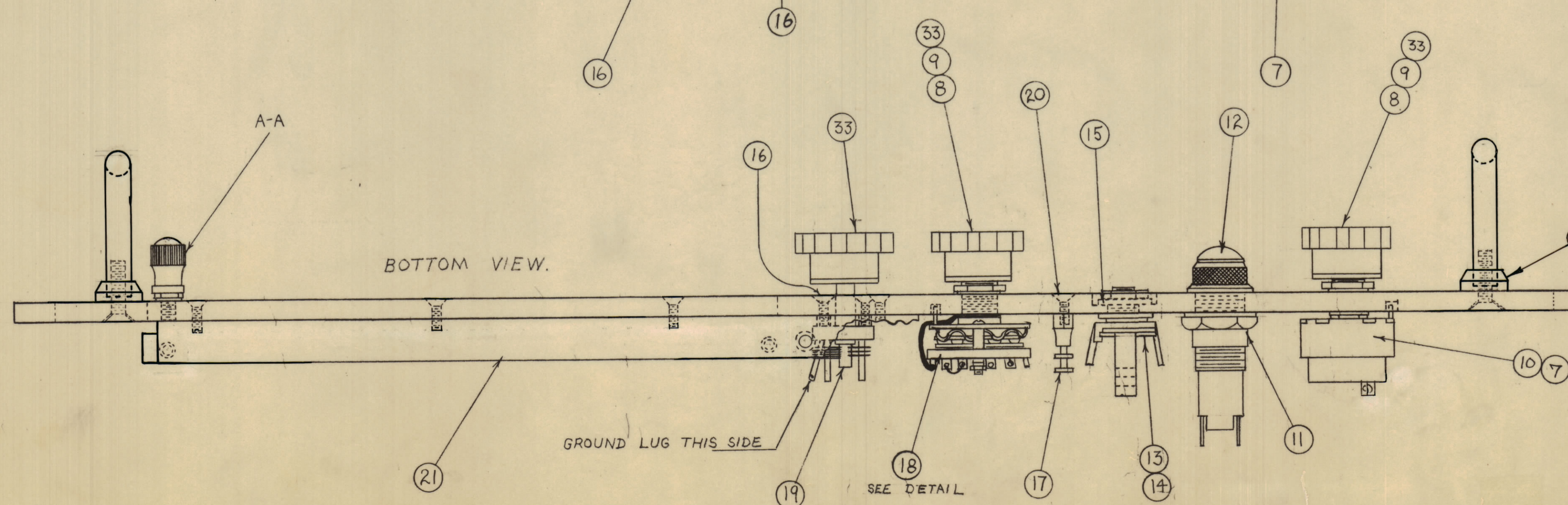
NOTICE TO P.R.O.'S RECEIVING THIS DRAWING

THE TECHNICAL MATERIEL CORPORATION claims proprietary right in the material disclosed hereon. This drawing is issued in confidence for engineering information only and may not be reproduced or used to manufacture anything shown hereon without permission from THE TECHNICAL MATERIEL CORPORATION to the user. This drawing is loaned for mutual assistance and is subject to recall at any time.

Property of:

THE TECHNICAL MATERIEL CORPORATION
 MAMARONECK, NEW YORK

C	1	ITEM (21) WAS A-257	8-3-63	9707	RC	YAH	16
B	3	ITEM 28 WAS HA-102-2	8-6-63	8400	RC	YAH	16
A	7	ITEM 16, 20, 22, 24, 25, 26, 27, 28, 29, 30, 31, 32, 33, 34, 35, 36, 37, 38	9-22-61	5602	RC	YAH	16
A	3	ALL WIRE CHGD. FROM 24 TO 26	9-22-61	5602	RC	YAH	16
A	2	ITEM 12 WAS BI-101-47					
A	1	ITEM # WAS LWI50LRN					
ISSUE	ITEM	CHANGED FROM	DATE	CN. NO.	DRAFTS	CHECKER	ENG. APP.
		TOLERANCES	SCALE: FULL				
ALL	DEC. DIM. ±	DRILL, PUNCH, COMMERCIAL STOCK					
OTHERS	FRAC. DIM. ±	SIZES AND MANUFACTURERS					
	ANGULAR DIM. ±	TOLERANCES ARE NOT INCLUDED.					



2	23	SCPP1032BNB	SCREW, MACHINE	
1	22	PM-158	FRONT PANEL BRACE-TOP	
1	21	PM-159	FRONT PANEL BRACE-BOTTOM	
1	20	SCFP0440BNB	SCREW, MACHINE	
1	19	CT-104-2	CAP. VAR. AIR TRIMMER	C137
1	18	SW-100	SWITCH, ASSEMBLY	S103
1	17	TE-102-2	TERMINAL TURRET	
11	16	SCFP0440BNB	SCREW, MACHINE	
1	15	WA-102-8	WASHER, FIBRE SHOULDER	
1	14	WA-101-10	WASHER, FIBRE FLAT	
1	13	JJ-034	JACK, TELEPHONE TYPE	J106
1	12	BI-101-44	INCANDESCENT LAMP	I100
1	11	TS-106-1	SOCKET, LENS	XI100
1	10	RV4BTRD503E	RESISTOR, VARIABLE	R143 S102
3	9	NTH3732BNB	NUT, HEX DOUBLE CHAMFER	
3	8	LWI37LRN	LOCKWASHER, INT. TOOTH	
3	7	TE-111-2	LUG, SOLDER	
1	6	RV44TRD105D	RESISTOR, VARIABLE COMP.	R121
1	5	ST22N	SWITCH, TOGGLE (2 NUTS SUPPLIED)	S101
3	4	LWI50LRN	LOCKWASHER, INT	
3	3	WA-100	RING, LOCKING	
2	2	ST12A	SWITCH, TOGGLE (2 NUTS SUPPLIED)	S100 S104
1	1	MS-2635	FRONT PANEL (ENGRAVED)	

REQ. ITEM	PART NO.	DESCRIPTION	SYMBOL
THE TECHNICAL MATERIEL CORP. MAMARONECK, NEW YORK			
FRONT PANEL			
MECHANICAL ASSEMBLY			
STOCK SIZE		DRAWN	
MATERIAL		ELEC. DES. APP.	
TYPE & TEMPER.		MECH. DES. APP.	
HEAT TREAT. SPEC.		CHECKED	
FINISH & SPEC. NO.		FINAL APPROVAL	

FFR-35	PROJECT NO.	8-23-61	DATE
MODEL	ABBY. NO.		
USED ON			

A-2158 C