

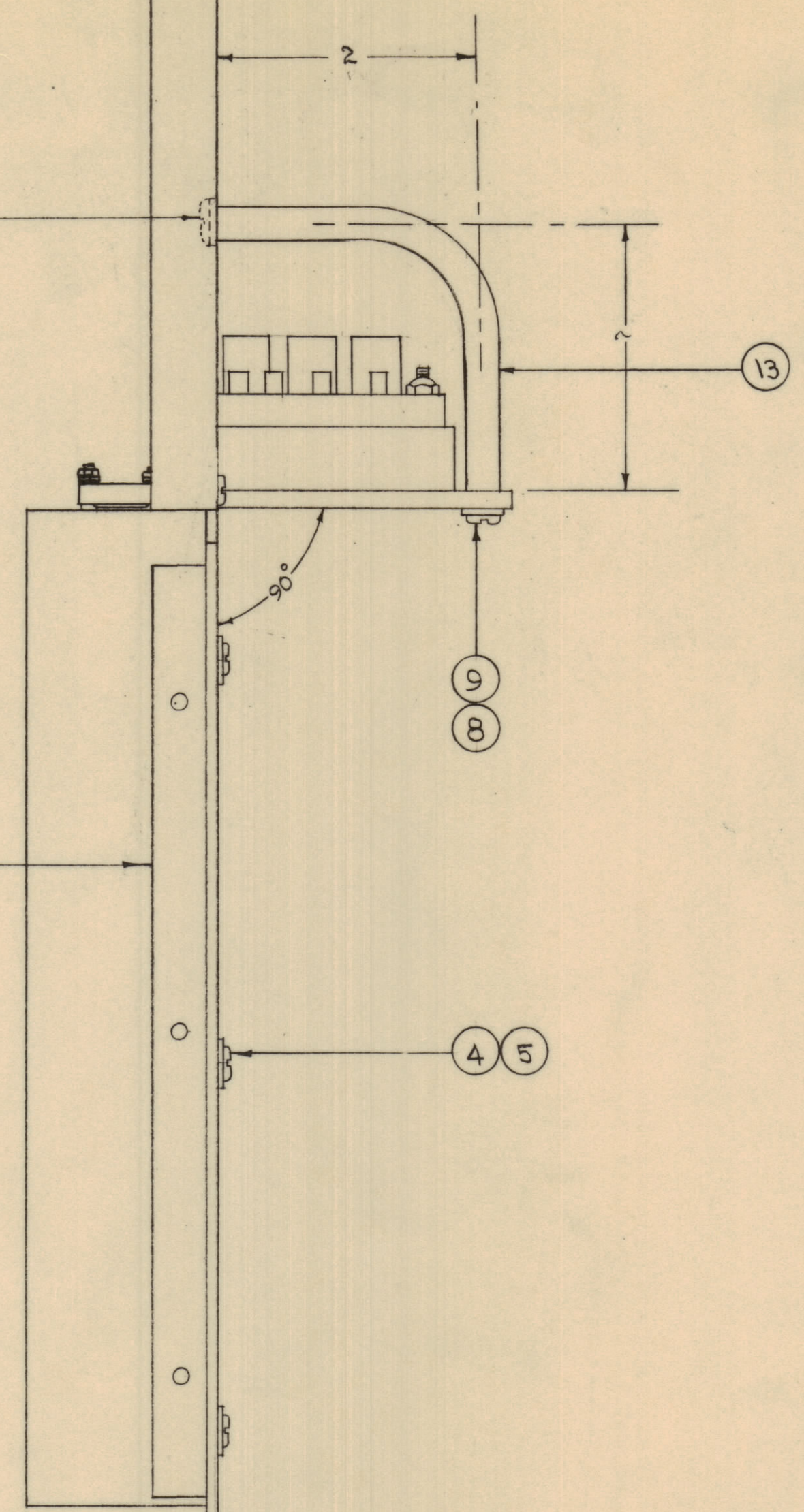
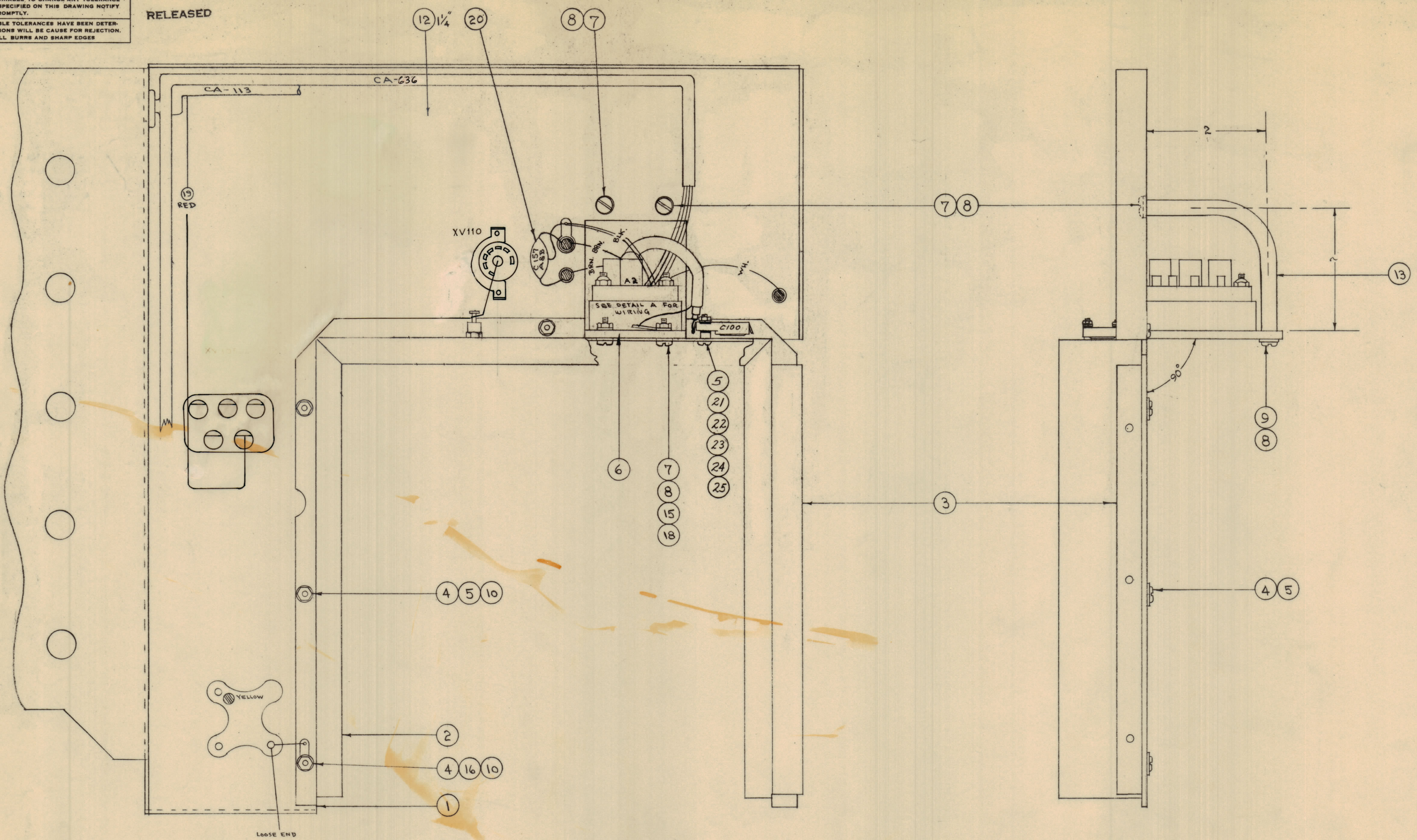
IF IT IS FOUND DESIRABLE TO CHANGE ANY TOLERANCE OR OTHER DETAIL SPECIFIED ON THIS DRAWING NOTIFY THE PURCHASER PROMPTLY.
 MAXIMUM ALLOWABLE TOLERANCES HAVE BEEN DETERMINED AND DEVIATIONS WILL BE CAUSE FOR REJECTION. REMOVE ALL BURRS AND SHARP EDGES.

RELEASED

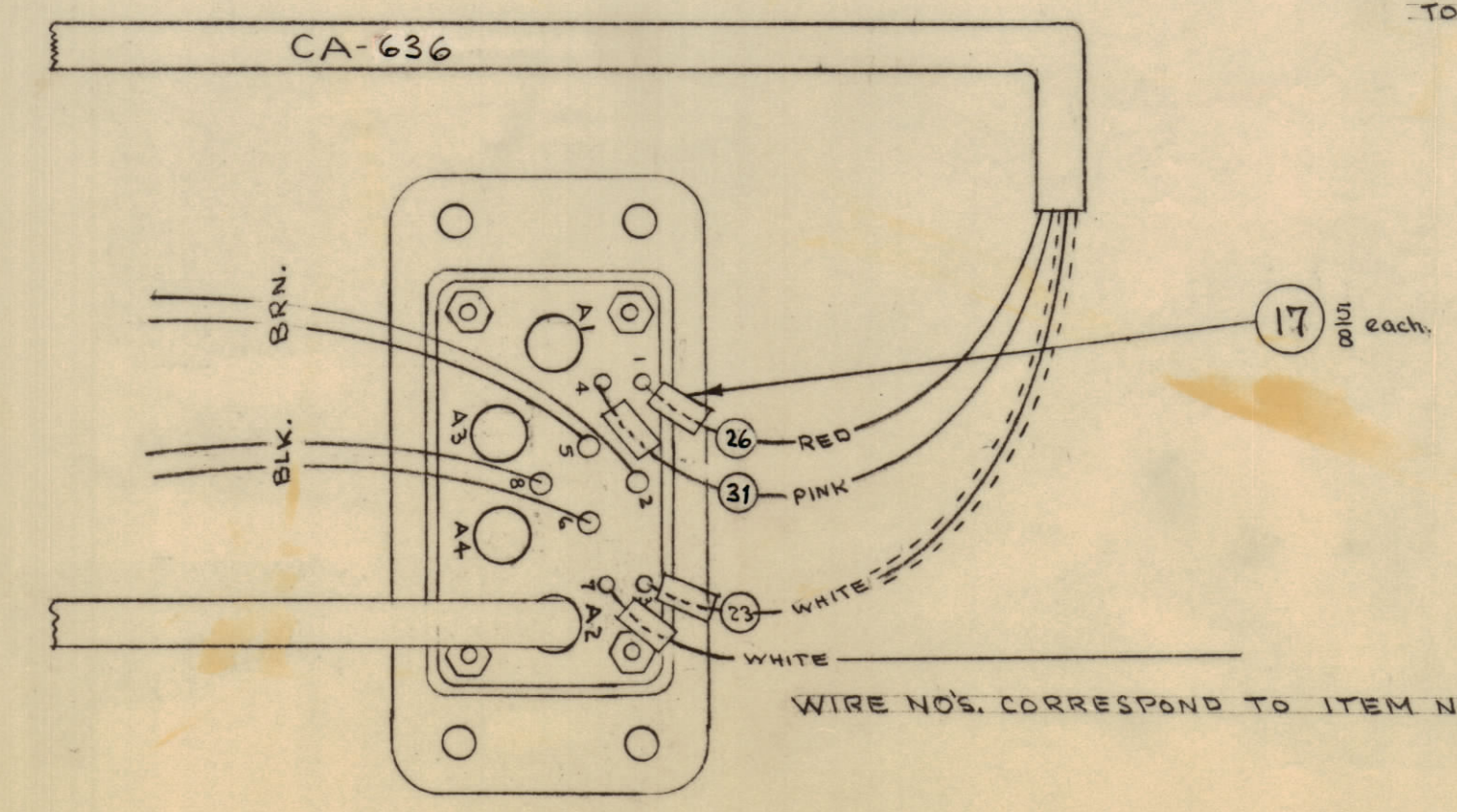
NOTICE TO PERSONS RECEIVING THIS DRAWING

THE TECHNICAL MATERIEL CORPORATION claims proprietary right in the material disclosed hereon. This drawing is issued in confidence for engineering information only and may not be reproduced or used to manufacture anything shown hereon without permission from THE TECHNICAL MATERIEL CORPORATION to the user. This drawing is loaned for mutual assistance and is subject to recall at any time.

Property of:
 THE TECHNICAL MATERIEL CORPORATION
 MAMARONECK, NEW YORK



THIS DRAWING SHOWS ONLY THAT HARDWARE NECESSARY TO CONNECT TI-104 (BACK) TO A-158 (PAN), AND A-158 (PAN) TO A-217 (COMPONENTS). ONLY THOSE COMPONENTS NECESSARY TO SHOW CONNECTIONS BETWEEN THE THREE PARTS.



WIRE NO'S. CORRESPOND TO ITEM NO'S. ON CA-133

DETAIL A

2	25	NTH0440BNG	NUT, HEX.	
2	24	TE-117-21	STAND OFF	
4	23	WA-109-17	WASHER, FIBRE	
2	22	SCBS0440B10	SCREW, MACHINE	
1	21	CV11C300	CAPACITOR, VAR. 4-30 μ F	C100
1	20	CC-100-23	CAPACITOR, FIXED 2X.01	C100
-	19		DELETE	
1	18	TE-116-2	LUG, SOLDER	
2 1/2	17	PX-100-1-.106	INSULATION, SLEEVING	
1	16	TE-104-1	TERMINAL, LOCKING	
2	15	NTH0632BNG	NUT, HEX.	
X	14	BS-100	SOLDER, SOFT	
2	13	PM-175	BRACE, JACK	
3/4	12	PX-104-2-.034	INSULATION, SLEEVING	
-	11	DELETED	DELETED	
6	10	NTH0400BNG	NUT, HEX.	
2	9	SCBS0432BNG	SCREW, MACHINE	
6	8	LWS 06 MRN	LOCKWASHER, SPLIT	
4	7	SCBS0632BNG	SCREW, MACHINE	
1	6	A-217	JACK ASSY.	J-107
10	5	LWS 04 MRN	LOCKWASHER, SPLIT	
9	4	SCBS0440BNG	SCREW, MACHINE	
1	3	PM-160	SIDE BRACE	
1	2	A-158	PAN ASSY.	
1	1	A-2147	CENTER CHASSIS COMP. ASSY.	

A	1	Item 100 DELETED	H12-62	6/67	JK		
ISSUE	ITEM	CHANGED FROM	DATE	CK. NO. DRAFTS	CHECKER	ENG. APP.	
TOLERANCES			SCALE:				
ALL OTHERS	DEC. DIM. \pm	FRAC. DIM. \pm	DRILL PUNCH, COMMERCIAL STOCK SIZES AND MANUFACTURERS TOLERANCES ARE NOT INCLUDED.				

FFR-35			8-19-61
MODEL	PROJECT NO.	ASSY. NO.	DATE
USED ON			

REG. ITEM	PART NO.	DESCRIPTION	SYMBOL
THE TECHNICAL MATERIEL CORP. MAMARONECK, NEW YORK			
CENTER CHASSIS & PAN ASSEMBLY			
TYPE & TEMPER		R. TURCHIN	
HEAT TREAT. SPEC.		CHECKED	FINAL APPROVAL
FINISH & SPEC. NO.		A-2149	

A-2149