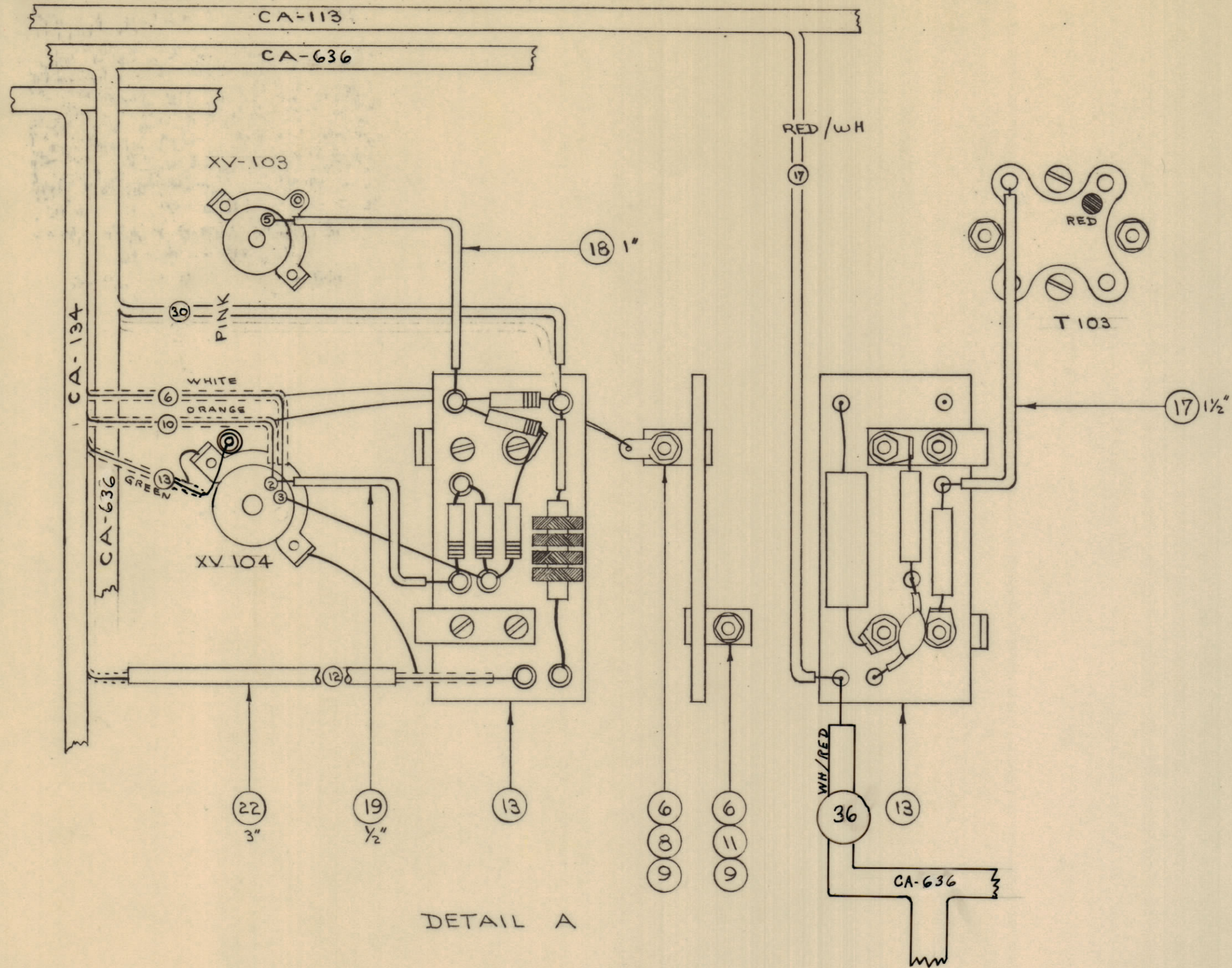
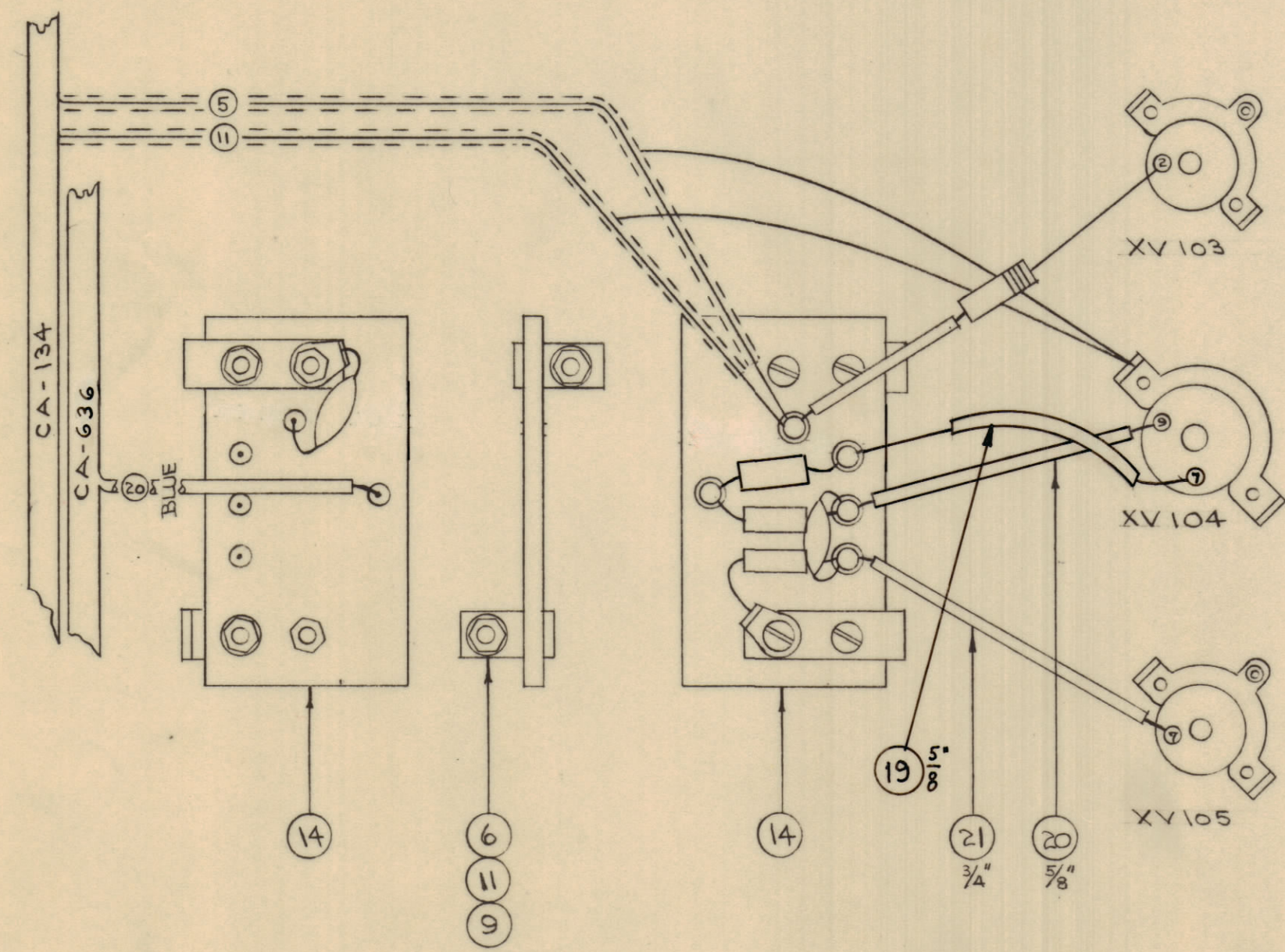


IF IT IS FOUND DESIRABLE TO CHANGE ANY TOLERANCE OR OTHER DETAIL SPECIFIED ON THIS DRAWING NOTIFY THE PURCHASER PROMPTLY.  
 MAXIMUM ALLOWABLE TOLERANCES HAVE BEEN DETERMINED AND DEVIATIONS WILL BE CAUSE FOR REJECTION. REMOVE ALL BURRS AND SHARP EDGES.

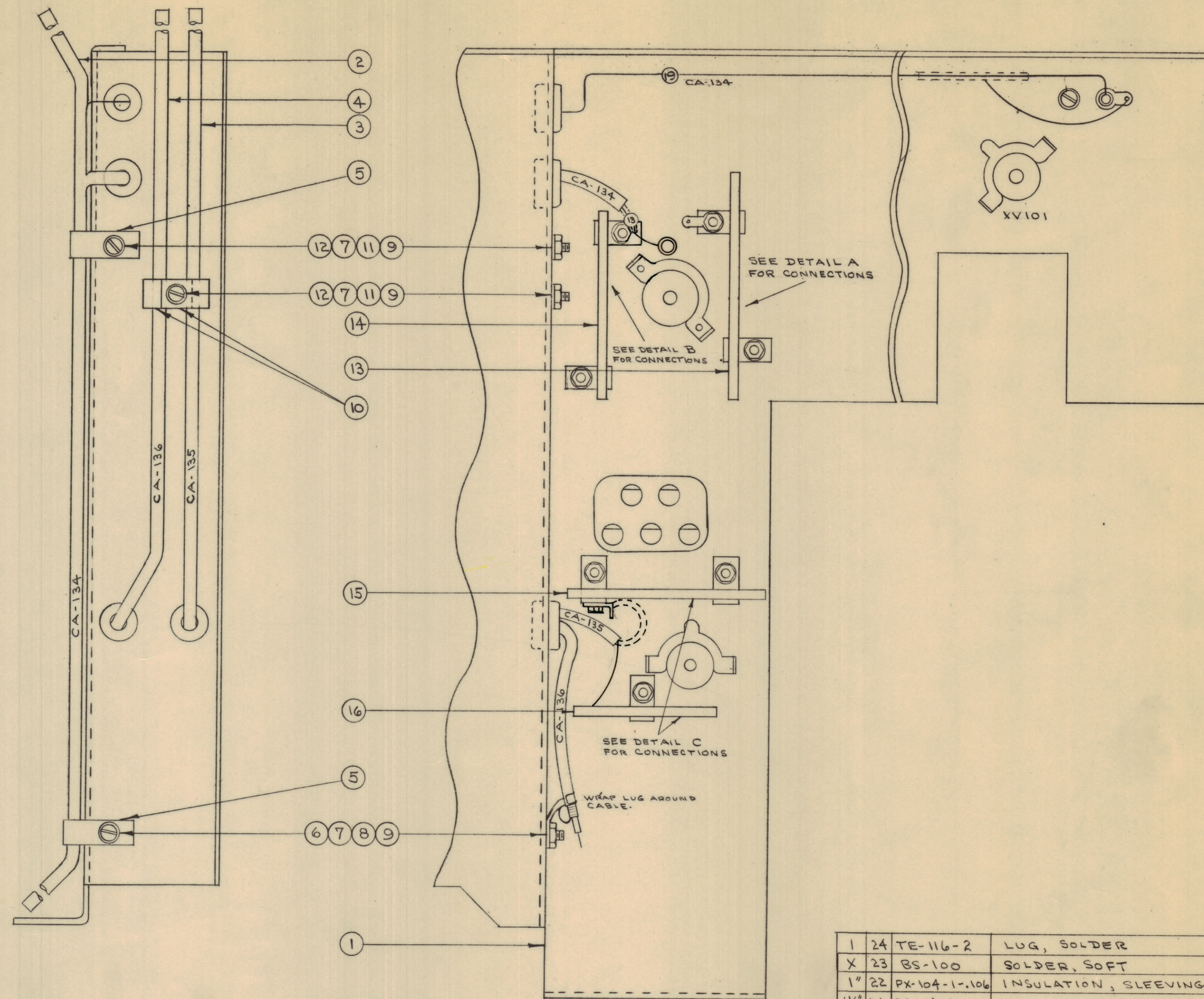
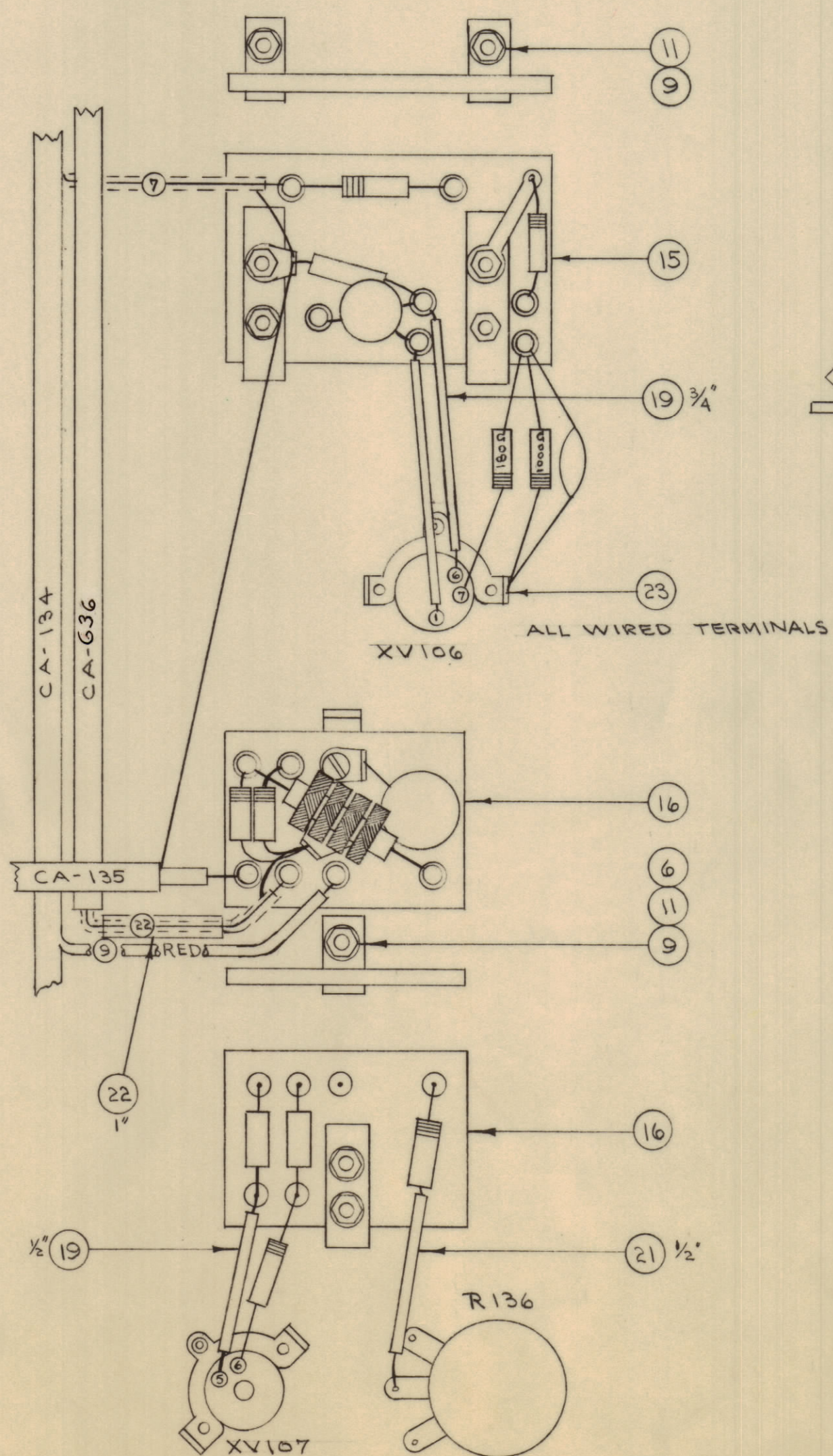


DETAIL A



DETAIL B

DETAIL C



NOTICE TO PERSONS RECEIVING THIS DRAWING

THE TECHNICAL MATERIEL CORPORATION claims proprietary right in the material disclosed herein. This drawing is issued in confidence or as engineering information only and may not be reproduced or used to manufacture anything shown hereon without permission from THE TECHNICAL MATERIEL CORPORATION to the user. This drawing is loaned for mutual assistance and is subject to recall at any time.

Property of:  
 THE TECHNICAL MATERIEL CORPORATION  
 MAMARONECK, NEW YORK

REQ. ITEM	PART NO.	DESCRIPTION	SYMBOL	
1	24	TE-116-2	LUG, SOLDER	
X	23	BS-100	SOLDER, SOFT	
1	22	PX-104-1-.106	INSULATION, SLEEVING	BLK
1 1/4	21	PX-104-4-.034	INSULATION, SLEEVING	GRN
3/8	20	PX-104-6-.034	INSULATION, SLEEVING	BLU
2 3/8	19	PX-104-2-.034	INSULATION, SLEEVING	YEL
1	18	PX-104-5-.034	INSULATION, SLEEVING	BRN
1 1/2	17	PX-104-1-.034	INSULATION, SLEEVING	BLK
1	16	A-465	TERM. BD. ASSY. (BFO)	
1	15	A-464	TERM. BD. ASSY. (REACTANCE)	
1	14	A-2111	TERM. BD. ASSY. (AUDIO)	
1	13	A-463	TERM. BD. ASSY. (DETECTOR)	
2	12	SC850632BNS	SCREW, MACHINE	
7	11	LW506MBN	LOCKWASHER, SPLIT	
2	10	CU-104-A	CLAMP, CABLE	
10	9	NTH0632BNS	NUT, HEX	
2	8	TE-104-2	TERMINAL, LOCKING	
3	7	FW06MBN	WASHER, FLAT	
6	6	SC850632BNG	SCREW, MACHINE	
2	5	CU-102-A	CLAMP, CABLE	
1	4	CA-136	CABLE, RF.	
1	3	CA-135	CABLE, R.F.	
1	2	CA-134	CABLE, (SIGNAL)	
1	1	A-2146	CEN. CHASSIS CABLE ASSY.	

THE TECHNICAL MATERIEL CORP.			
MAMARONECK, NEW YORK			
CENTER CHASSIS			
CABLE ASSEMBLY			
TYPE & TEMPER.	DRAWN	ELEC. DES. APP.	MECH. DES. APP.
	W.A.F.		
HEAT TREAT. SPEC.	CHECKED	FINAL APPROVAL	
FINISH & SPEC. NO.			

FFR-35	PROJECT NO.	ASSY. NO.	DATE
			8-19-61
USED ON			

A-2141

2	ITEM 14 WAS A-262	9-22-61	5602	LB	15		
1	ITEM 1 WAS FWO6MRN						
ISSUE	ITEM	CHANGED FROM	DATE	CN. NO.	DRAFTS	CHECKER	ENG. APP.
TOLERANCES							
ALL DEC. DIM. ±		DRILL, PUNCH, COMMERCIAL STOCK					
OTHERS FRAC. DIM. ±		SIZES AND MANUFACTURERS					
		TOLERANCES ARE NOT INCLUDED.					