

A-2138 A

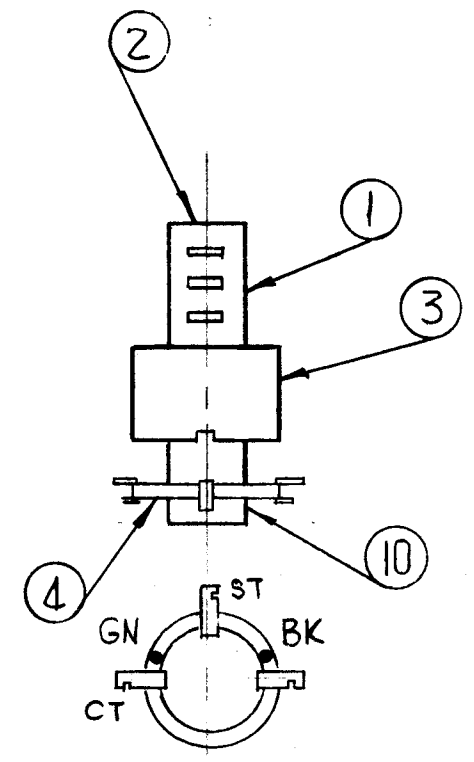
COIL DATA

| SPECIFICATIONS | |
|--------------------|-----------|
| CAM | 250 |
| CAM GEAR | 102 |
| CAM DRIVER | 69 |
| IDLER | 60-60 |
| TURNS | 170 |
| WIRE | 3/41 LITZ |
| TAP AT | 70 |
| L (uh) ± 10% * | 190 |
| MIN. Q AT 790 KC * | 50 |
| APPROX. R (Ω) | 0-2.5-7 |

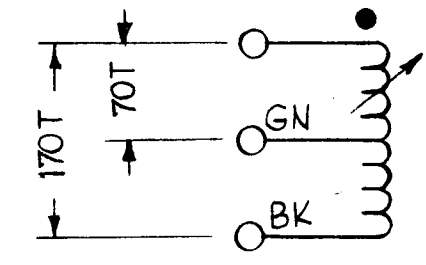
*- WITHOUT TUNING CORE

1. Start winding 3/8" in from left end.
2. Take tap out to left side; at 70 turns; finish wind.
3. Cement loose ends. Let dry.
4. Immerse coil in hot wax (GL-100) until bubbles cease.
5. Slide cup over winding, from right side keeping leads to left.
6. Wrap 1 turn 1/4" masking tape around right end of coil form, about 1/16" from end. Do not cover leads.
7. Slip collar over tape. Cement in place.
8. Connect start to unmarked lug
Tap to green lug
Finish to black lug
9. Solder 2" Buss-Bar to all lugs.
10. Test as per chart above.
11. Insert tuning core into right end.

— COLLAR ASSY —

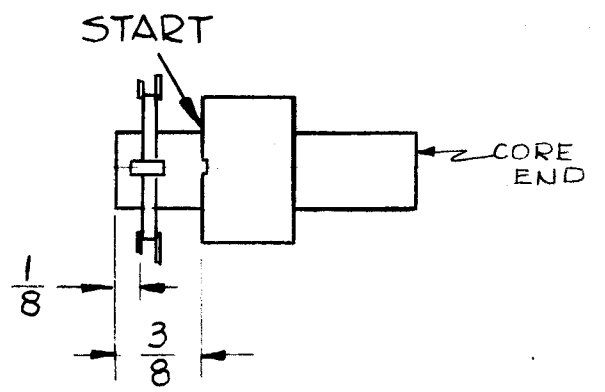


— SCHEMATIC —



● INDICATES START OF WINDING

— COIL SPACING —



| REQ. | ITEM | PART NO. | STRUMER DESCRIPTION | SYMBOL |
|------|------|---------------|-----------------------|--------|
| X | 10 | TA-105-3 | TAPE, MASKING | |
| X | 9 | WI-104-341-DS | WIRE, LITZ, 3/41 | |
| X | 8 | BS-100 | SOLDER, SOFT | |
| X | 7 | WL-100-7 | WIRE- BUSS BAR | |
| X | 6 | GL-103 | CEMENT, DUCO | |
| X | 5 | GL-100 | POTTING COMPOUND, WAX | |
| 1 | 4 | TE-181-3 | TERMINAL, COLLAR | |
| 1 | 3 | CI-122 | CORE, CUP | |
| 1 | 2 | CI-121 | CORE, THREADED | |
| 1 | 1 | CF-132 | FORM, COIL | |

| REQ. ITEM | | PART NO. | STRUMER DESCRIPTION | SYMBOL |
|--|--|-------------------|---------------------|----------|
| THE TECHNICAL MATERIEL CORP. MAMARONECK, NEW YORK | | | | |
| STOCK SIZE | | | | |
| TT-153 ASSY | | | | |
| MATERIAL | | | | |
| | | RUZZO | MP | BP |
| TYPE & TEMPER | | HEAT TREAT. SPEC. | DRAWN | CHECKER |
| | | | MP | MP |
| FINISH & SPEC. NO. | | ELEC. DES. APP. | MECH. DES. APP. | |
| | | | | A-2138 A |

| SYM | DESCRIPTION | DATE | CH. NO. | DRAFTS | CHECKER | ENG. APP. |
|-----|------------------------|--------|---------|--------|---------|-----------|
| A | WINDING DATA CLARIFIED | 4-5-61 | 8717 | RC | MP | BP |

UNLESS OTHERWISE SPECIFIED:
DIMENSIONS ARE IN INCHES
TOLERANCES ON FRACTIONS ± 1/64 DECIMALS ± .005 ANGLES ± 1/2°

SCALE:
MAXIMUM ALLOWABLE TOLERANCES HAVE BEEN DETERMINED AND ANY DEVIATIONS WILL BE CAUSE FOR REJECTION. REMOVE ALL BURRS AND SHARP EDGES

| REQ. PER UNIT | MODEL | SECTION | ASS'Y. NO. | DATE |
|---------------|--------|---------|------------|--------|
| 1 | GPR-92 | IF | A2120 | 9-8-61 |

USED ON