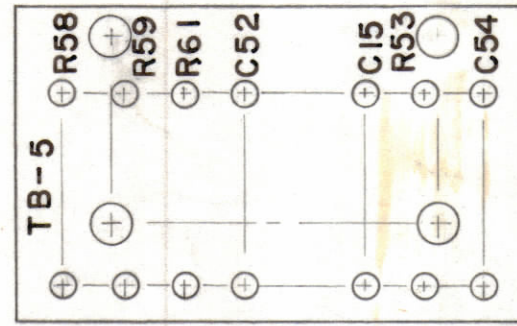
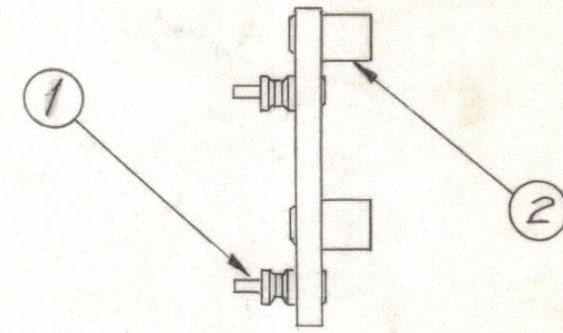


STAGE 1 - MACHINING (A-2123-1)
MATERIAL - 1/8", XXXP, PHENOLIC, FINISH - NATURAL



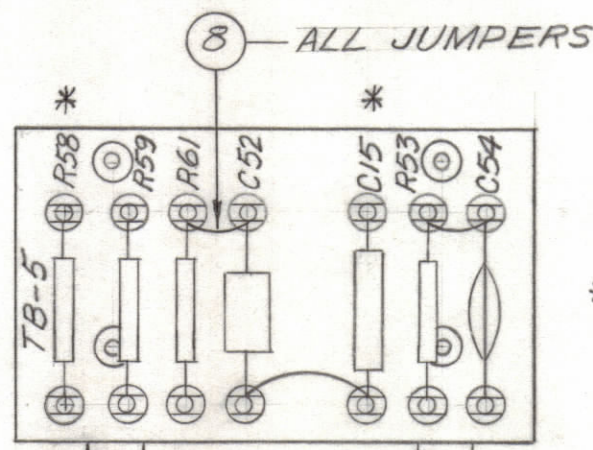
STAMPING TO BE 1/8 HIGH BLACK GOTHIC

STAGE 2 STAMPING (A-2123-2)

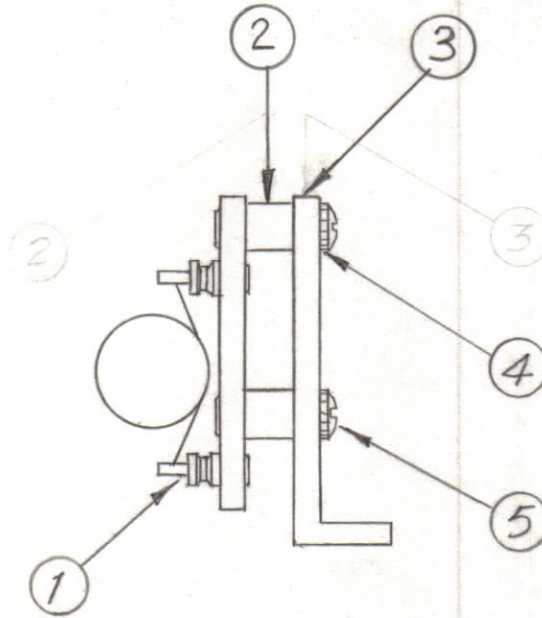


STAGE 3 SUB-ASSEMBLY (A-2123-3)

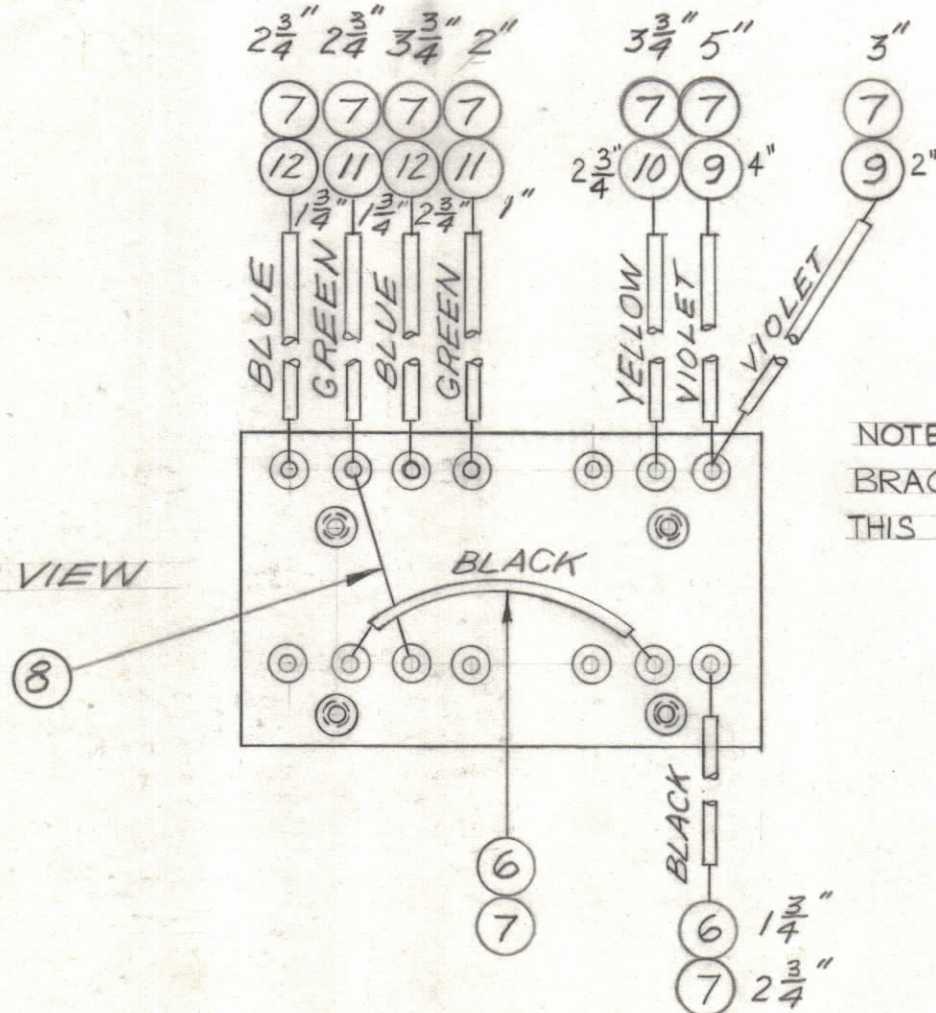
TOP VIEW



* DO NOT SOLDER THIS END OF R58 & C15



REAR VIEW



NOTE: BRACKETS (ITEM 3) DELETED FROM THIS VIEW FOR WIRING CLARITY.

NOTE: BRACKETS DELETED FROM THIS VIEW FOR WIRING CLARITY.

STAGE 4 - ELECTRICAL ASSEMBLY (A-2123-3)

THE CONTENTS OF THIS DRAWING ARE THE EXCLUSIVE PROPERTY OF THE TECHNICAL MATERIEL CORP. ITS UNAUTHORIZED USE OR REPRODUCTION IN WHOLE OR IN PART IS STRICTLY FORBIDDEN.

REQ.	ITEM	PART NO.	DESCRIPTION	SYMBOL
X	19	BS-100	SOLDER, SOFT	
2	18	RC20GF474K	RESISTOR, FIXED, COMP.	R61, 59
1	17	RC20GF473K	RESISTOR, FIXED, COMP.	R58
1	16	RC20GF391K	RESISTOR, FIXED, COMP.	R53
1	15	CC21SL470K	CAPACITOR, FIXED, CERAMIC	C15
1	14	CC-100-16	CAPACITOR, FIXED, CERAMIC DISC.	C54
1	13	CM20D102J	CAPACITOR, FIXED, MICA.	C52
X	12	PX-104-6-.034	INSULATION, SLEEVING (SIZE 20)	BLUE
X	11	PX-104-4-.034	INSULATION, SLEEVING (SIZE 20)	GREEN
X	10	PX-104-2-.034	INSULATION, SLEEVING (SIZE 20)	YELLOW
X	9	PX-104-9-.034	INSULATION, SLEEVING (SIZE 20)	VIOLET
X	8	WL-100-8	WIRE, BUSS (SIZE 24)	
X	7	WL-100-7	WIRE, BUSS (SIZE 22)	
X	6	PX-104-1-.034	INSULATION, SLEEVING (SIZE 20)	BLACK
4	5	SCBS0632BN6	SCREW, MACHINE	
4	4	LWE06MRN	LOCKWASHER, EXTERNAL	
2	3	MS-1321	BRACKET, TERMINAL BOARD	
4	2	TE-108-3	STANDOFF, RIVET TYPE	
14	1	TE-109-3	TERMINAL LUG	

REQ.	ITEM	PART NO.	DESCRIPTION	SYMBOL
THE TECHNICAL MATERIEL CORP. MAMARONECK, NEW YORK				
TERMINAL BOARD NO. 5 FINAL ASS'Y & STAMPING				
DRAWN		CHECKED		FINAL APPROVAL
TYPE & TEMPER		HEAT TREAT. SPEC.		
FINISH & SPEC. NO.		ELEC. DES. APP.		MECH. DES. APP.
		SHEET		OF

SYM	ZONE	DESCRIPTION	DATE	CH. NO.	DRAFTS	CHECKER	ENG. APP.
UNLESS OTHERWISE SPECIFIED:							
DIMENSIONS ARE IN INCHES							
TOLERANCES ON FRACTIONS ± 1/64 DECIMALS ± .005 ANGLES ± 1/2°							
SCALE: MAXIMUM ALLOWABLE TOLERANCES HAVE BEEN DETERMINED AND ANY DEVIATIONS WILL BE CAUSE FOR REJECTION. REMOVE ALL BURRS & SHARP EDGES							

REQ. PER UNIT	MODEL	SECTION	ASS'Y. NO.	DATE
1	MSR-6B			8-15-61