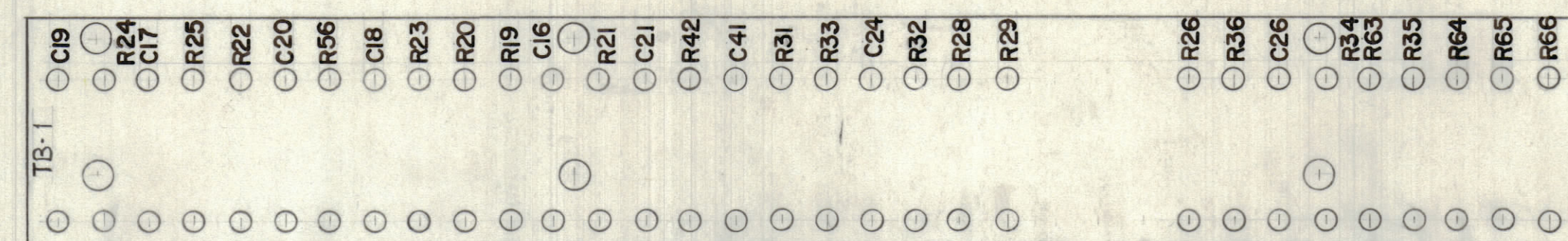
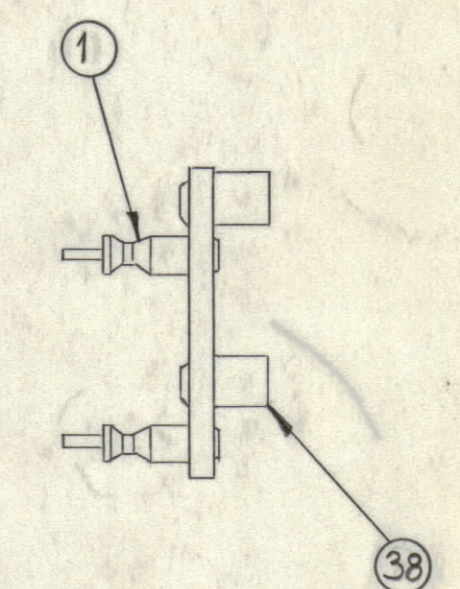


STAGE 1 MACHINING (A-2121-1)
MATERIAL $\frac{1}{8}$ THICK, XXXP, PHENOLIC, FINISH-NATURAL

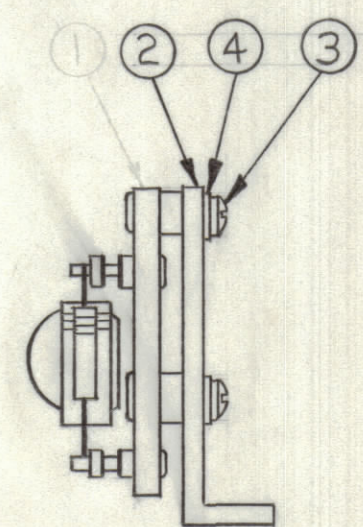
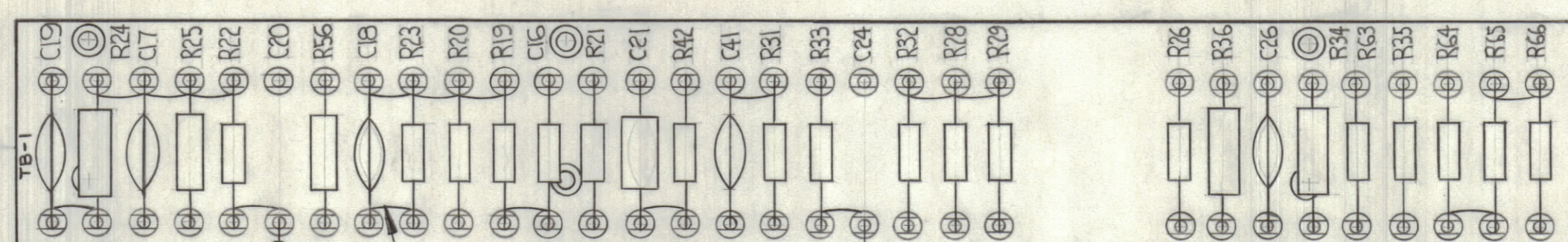


STAGE 2 - STAMPING (A-2121-2)

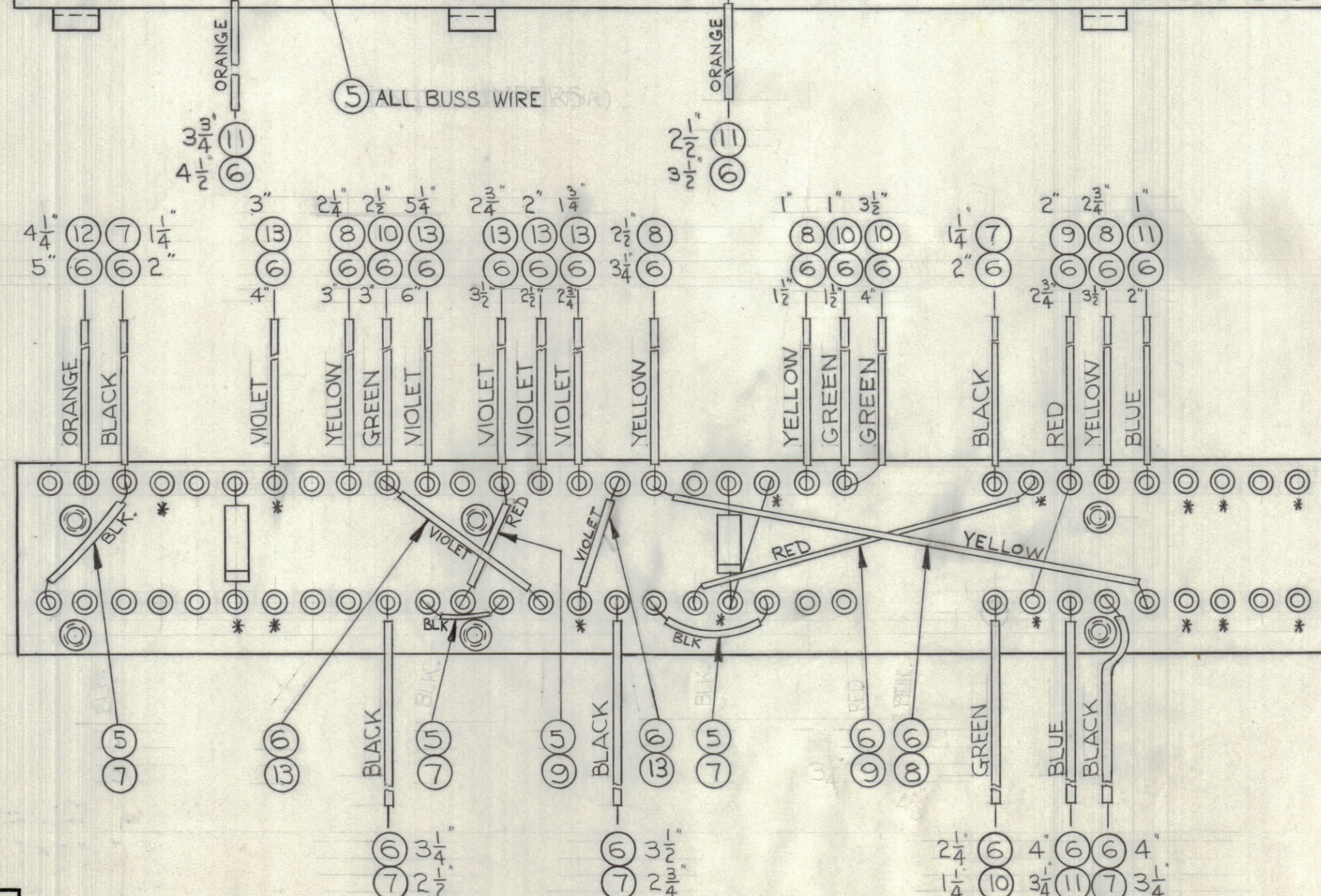


STAGE 3 - SUB-ASSEMBLY (A-2121-3)

TOP VIEW



BOTTOM VIEW



* DO NOT SOLDER THESE CONNECTIONS ON ASS'Y.

THE CONTENTS OF THIS DRAWING ARE THE EXCLUSIVE PROPERTY OF THE TECHNICAL MATERIEL CORP. ITS UNAUTHORIZED USE OR REPRODUCTION IN WHOLE OR IN PART IS STRICTLY FORBIDDEN.

* DO NOT SOLDER IN

NOTE: ASSEMBLE FOLLOWS CONVENTIONS AS SHOWN.

STAGE 4 - ELECTRICAL ASSEMBLY (A-2121-4)

REQ.	ITEM	PART NO.	DESCRIPTION	SYMBOL
6	38	TE-108-3	STANDOFF, RIVET TYPE	
1	37	CM20D102J	CAPACITOR, FIXED, MICA	C21
1	36	CC100-32	CAPACITOR, FIXED, CERAMIC DISC.	C41
2	35	CN-100-1	CAPACITOR, FIXED, (.01)	C20 C24
1	34	RC42GF563K	RESISTOR, FIXED, COMP.	R56
X	33	ES-100	SOLDER, SOFT	
1	32	RC20GF272K	RESISTOR, FIXED, COMP.	R65
1	31	RC20GF473K		R63
2	30	RC20GF681K		R66 R64
1	29	RC20GF392K		R35
1	28	RC42GF561K		R34
1	27	RC20GF223K		R42
1	26	RC20GF474K		R32
1	25	RC20GF271K		R28
1	24	RC20GF123K		R26
1	23	RC32GF103K		R25
1	22	RC42GF473K		R24
1	21	RC20GF121K		R23
4	20	RC20GF104K		R20, 22 33, 25
1	19	RC20GF391K		R31
2	18	RC20GF203J	RESISTOR, FIXED, COMP.	R17 R21
1	17	CC-100-9	CAPACITOR, FIXED, CERAMIC	C26
3	16	CC-100-16	CAPACITOR, FIXED CERAMIC	C17, 18
1	15	RC32GF333K	RESISTOR, FIXED, COMP.	R36
1	14	CC26SL820J	CAPACITOR, FIXED, CERAMIC	C16
12 3/4	13	PX-104-9-.034	INSULATION, SLEEVING (SIZE 20)	VIOLET
4 1/4	12	-8-		ORANGE
10 1/2	11	-6-		BLUE
3 3/4	10	-4-		GREEN
5 1/4	9	-3-		RED
3 1/4	8	-2-		YELLOW
14 1/2	7	PX-104-1-.034	INSULATION, SLEEVING (SIZE 20)	BLACK
X	6	WL-100-7	WIRE, BUSS (SIZE 22)	
X	5	WL-100-8	WIRE, BUSS (SIZE 24)	
6	4	LW06MRN	LOCKWASHER, EXT.	
6	3	SCB50632BN6	SCREW, MACHINE	
3	2	MS-1321	BRACKET, ANGLE, T. B.	
62	1	TE-109-3	TERMINAL LUG	

SYM	ZONE	DESCRIPTION	DATE	CH. NO.	DRAFTS	CHECKER	ENG. APP.
UNLESS OTHERWISE SPECIFIED:			SCALE DO NOT SCALE				
DIMENSIONS ARE IN INCHES			MAXIMUM ALLOWABLE TOLERANCES HAVE BEEN DETERMINED AND ANY DEVIATIONS WILL BE CAUSE FOR REJECTION. REMOVE ALL BURRS & SHARP EDGES				
TOLERANCES ON FRACTIONS $\pm 1/64$			DECIMALS $\pm .005$			ANGLES $\pm 1/2^\circ$	

REQ. PER UNIT	MODEL	SECTION	ASBY. NO.	DATE
1	MSR-GB			8-12-61

REG.	DES. APP.	MECH. DES. APP.	SHEET	OF
R. TURCHIN	MA G		A-2121	