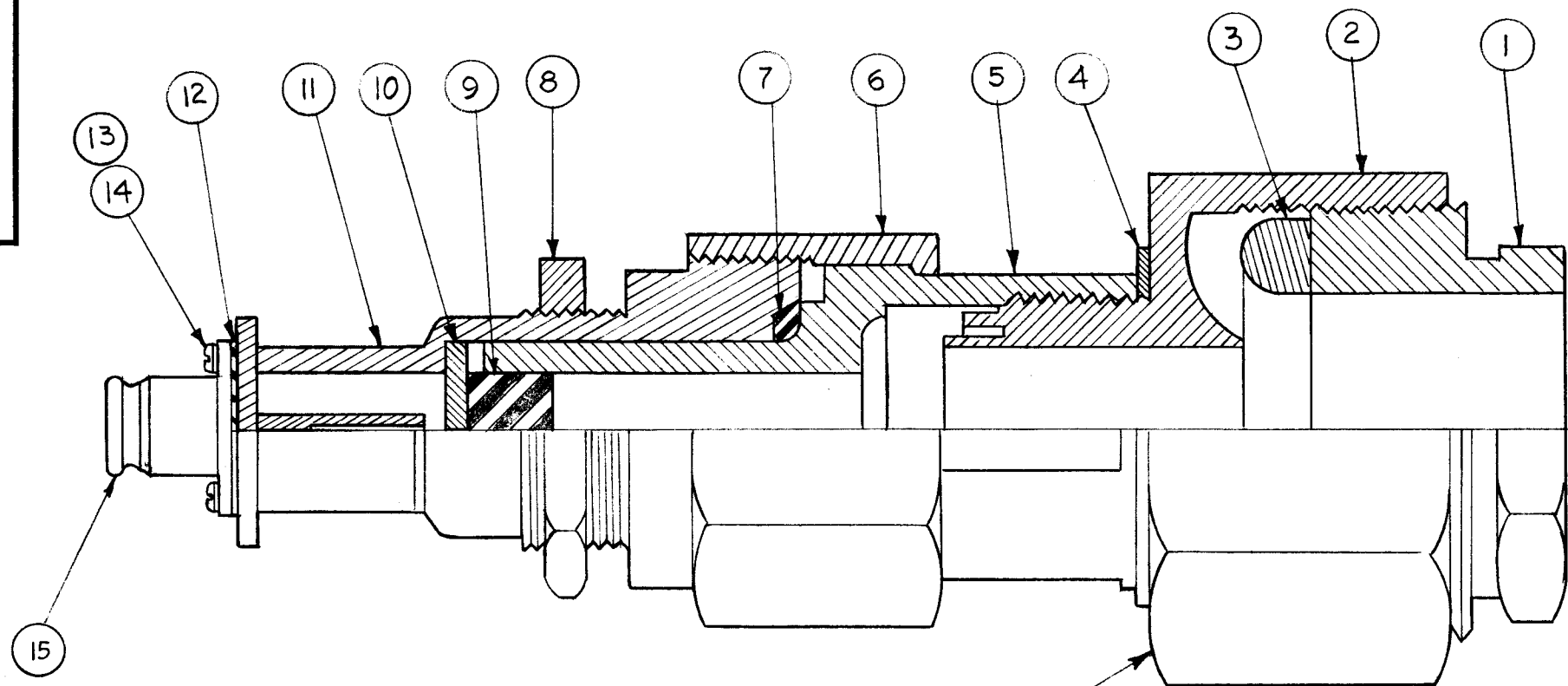


A-2116 A



NOTE:
LIGHTLY COAT ALL TREADS EXCEPT
ITEM 15 WITH L-102. BEFORE ASSEMBLY.

METAL STAMP TCA-85/QDS
BEFORE SHIPPING FROM T.M.C.

X	16	LU-102	ANTI-SEIZE COMPOUND
1	15	JJ-151	CONNECTOR, RECEPTACLE
4	14	LWS04MRN	LOCK WASHER, SPLIT
4	13	SCPS0440BN5	SCREW, MACHINE
1	12	GA-149-4	GASKET
1	11	SM-108	ADAPTER BODY
1	10	PX-106	WASHER
1	9	GA-109	GASKET
1	8	NT-103	NUT
1	7	GA-108	GASKET
1	6	SM-103	CONNECTOR NUT
1	5	SM-106	CONNECTOR
1	4	MS-107	SEAL WASHER
1	3	SM-105	ARMOR RING
1	2	SM-101	ARMOR COUPLING GLAND
1	1	SM-102	ARMOR GLAND NUT

SUPERSEDED
DIRECTLY REPLACED BY TCA-85/QDS
11-2-62 *efj*

A	REPLACED BY TCA-85/QDS	11-2-62	7572	<i>efj</i>	<i>JJO</i>	<i>JJO</i>
SYM	DESCRIPTION	DATE	CH. NO.	DRAFTS	CHECKER	ENG. APP.

UNLESS OTHERWISE SPECIFIED:
DIMENSIONS ARE IN INCHES
TOLERANCES ON
FRACTIONS $\pm 1/64$ DECIMALS $\pm .005$ ANGLES $\pm 1/2^\circ$

SCALE:
MAXIMUM ALLOWABLE TOLERANCES HAVE BEEN DETERMINED AND ANY DEVIATIONS WILL BE CAUSE FOR REJECTION.
REMOVE ALL BURRS AND SHARP EDGES

REQ. PER UNIT	TCA-85-QDS	SECTION	ASS'Y. NO.	DATE
				8-3-61
USED ON				

REQ.	ITEM	PART NO.	DESCRIPTION	SYMBOL
			THE TECHNICAL MATERIEL CORP. MAMARONECK, NEW YORK	
			TCA-85-QDS CONNECTOR ADAPTER ASSEMBLY	
		G.D.L.	<i>JJO</i>	<i>JJO</i>
TYPE & TEMPER	HEAT TREAT. SPEC.	DRAWN	CHECKER	FINAL APPROVAL
		<i>JJO</i>	<i>JJO</i>	A-2116
FINISH & SPEC. NO.		ELEC. DES. APP.	MECH. DES. APP.	A