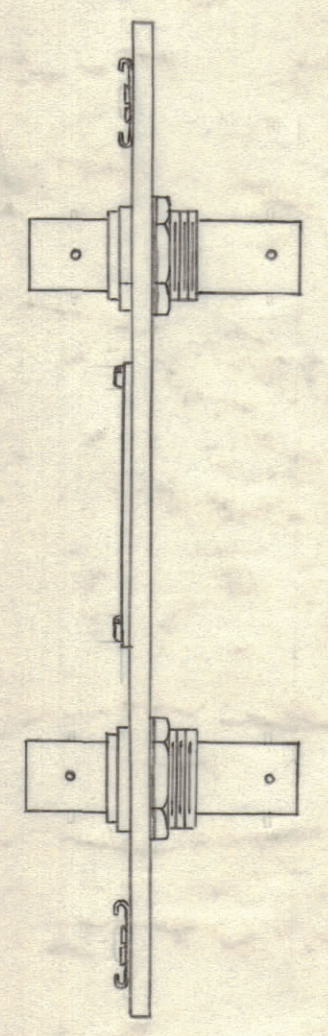
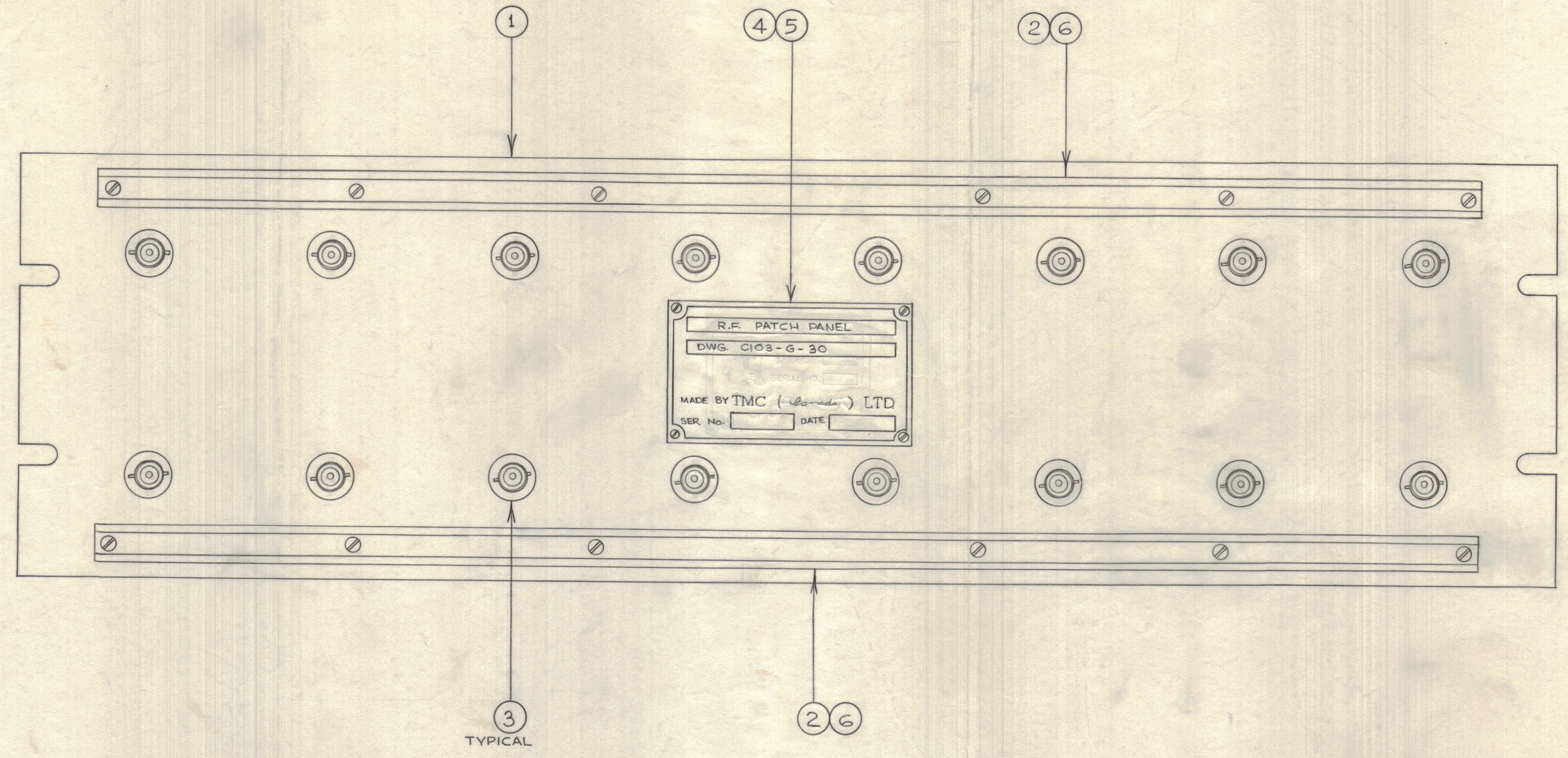


IF IT IS FOUND DESIRABLE TO CHANGE ANY TOLERANCE OR OTHER DETAIL SPECIFIED ON THIS DRAWING NOTIFY THE PURCHASER PROMPTLY.

MAXIMUM ALLOWABLE TOLERANCES HAVE BEEN DETERMINED AND DEVIATIONS WILL BE CAUSE FOR REJECTION. REMOVE ALL BURRS AND SHARP EDGES.

ISSUE	ITEM	CHANGED FROM	DATE	CH. NO.	DRAFTS	CHECKER	ENG. APP.
A	4	NP389 ADDED	AUG 28/61	1	JPC	J.C.	R.H.S.

REQ.	ITEM	PART NO.	DESCRIPTION	SYMBOL
1	1	MS-2634	FRONT PANEL, MACHINING	
2	2	MS-1184	CARD HOLDER	
10	3	UG-492 A/U	ADAPTER	
1	4	NP-389-1	NAMEPLATE	
4	5	SPB0256S113	SCREW, SELF TAPPING	
12	6	SCPS0348B13	SCREW	



**NOTICE TO PERSONS RECEIVING THIS DRAWING**

THE TECHNICAL MATERIEL CORPORATION claims proprietary right in the material disclosed hereon. This drawing is issued in confidence for engineering information only and may not be reproduced or used to manufacture anything shown hereon without permission from THE TECHNICAL MATERIEL CORPORATION to the user. This drawing is loaned for mutual assistance and is subject to recall at any time.

Property of:  
 THE TECHNICAL MATERIEL CORPORATION  
 MAMARONECK, NEW YORK

TOLERANCES		SCALE: 1:1
ALL	DEC. DIM. ±	DRILL, PUNCH, COMMERCIAL STOCK
OTHERS	FRAC. DIM. ± 1/64	SIZES AND MANUFACTURERS
	ANGULAR DIM. ±	TOLERANCES ARE NOT INCLUDED.

MODEL	C 9545	PROJECT NO.	ASSY. NO.	DATE	July 20/61
USED ON					

STOCK SIZE	TMC (Canada) LIMITED OTTAWA ONTARIO		
MATERIAL	WEIGHT PER PC	R.F.	
PATCH PANEL			
TYPE & TEMPER	JPC	DRAWN	ELEC. DES. APP. MECH. DES. APP.
HEAT TREAT SPEC.	CRECKED	FINAL APPROVAL	
FINISH & SPEC. NO.	A 2109 A		