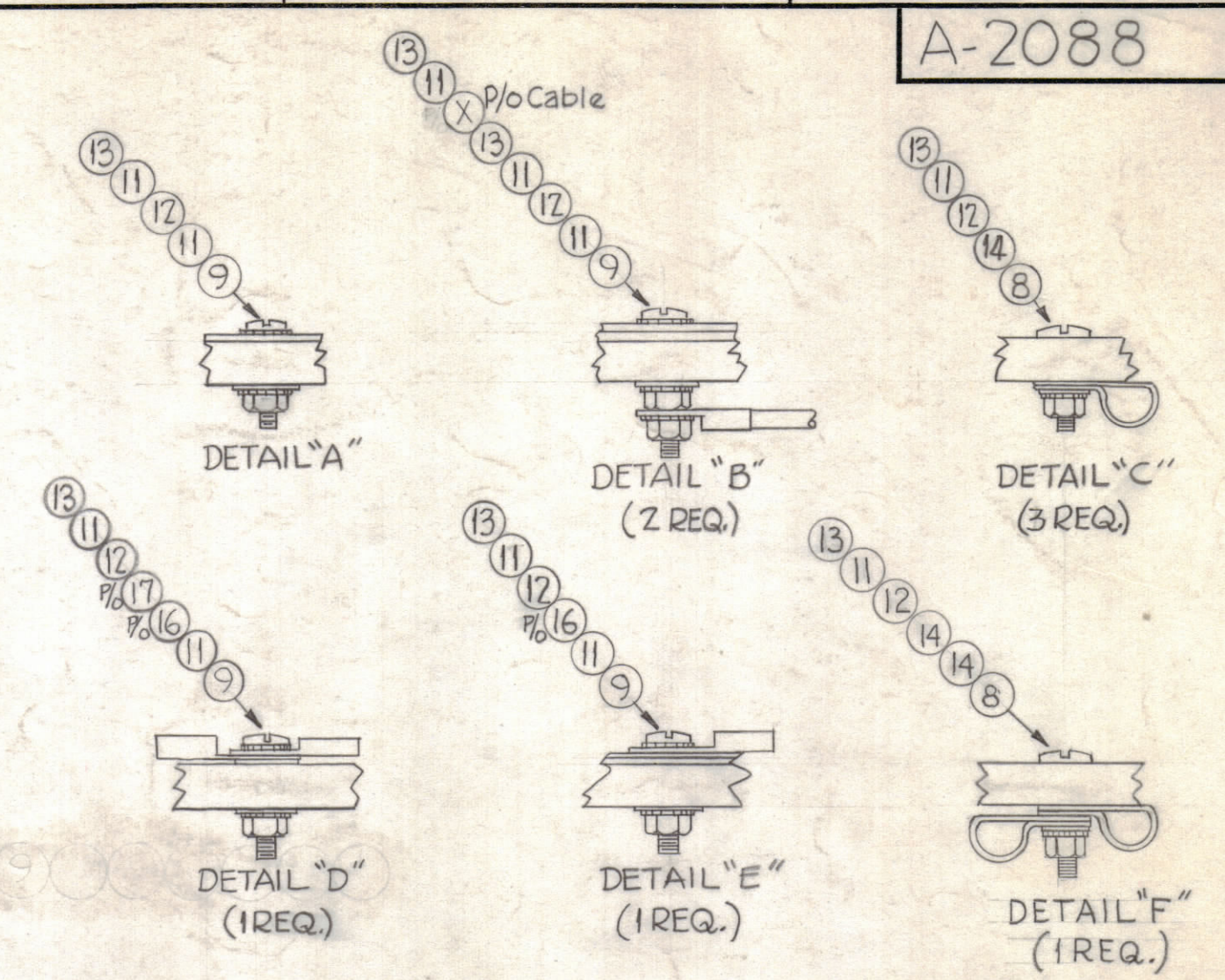
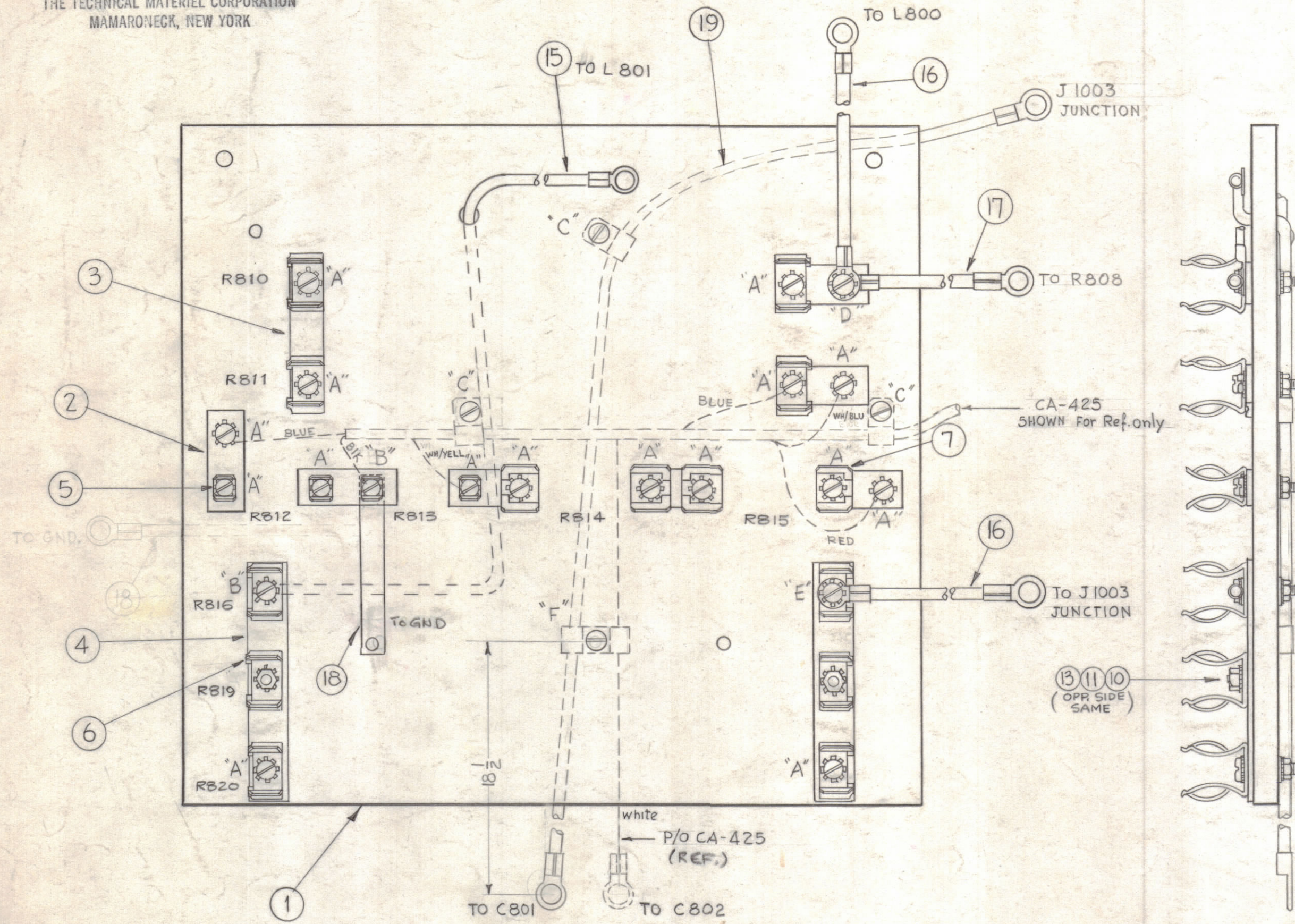


NOTICE TO PERSONS RECEIVING THIS DRAWING

THE TECHNICAL MATERIEL CORPORATION claims proprietary right in the material disclosed hereon. This drawing is issued in confidence for engineering information only and may not be reproduced or used to manufacture anything shown hereon without permission from THE TECHNICAL MATERIEL CORPORATION to the user. This drawing is loaned for mutual assistance and is subject to recall at any time.

Property of:  
THE TECHNICAL MATERIEL CORPORATION  
MAMARONECK, NEW YORK

A-2088 D



REQ. ITEM	PART NO.	DESCRIPTION	SYMBOL
1	19	CA-409-115-36.00	Cable Ass'y., Jumper, J 1003 To C801
1	18	MS-202-27-3.812	Jumper, Ground
1	17	CA-412-4-13.00	Cable Ass'y., Jumper
2	16	CA-412-4-9.25	↑ ↑ ↑
1	15	CA-412-4-19.25	Cable Ass'y., Jumper, Ground
5	14	CU-102-3	Clamp, Cable, 1/4 D.
28	13	NTH0832BN10	Nut, Hex.
24	12	FW08HBN	Washer, Flat
48	11	LWE08MRN	Lockwasher, Int.
2	10	SCFP0832BNG	Screw, Machine, 8-32 x 3/8 Lg.
20	9	SCBP0832BN18	" " " x 1/8 Lg.
4	8	SCBP0832BN13	Screw, Machine, 8-32 x 13/16 Lg.
4	7	FH-102	Clip, Fuse, 13/16 I.D.
10	6	FC-103	Clip, Fuse, 1 1/16 I.D.
4	5	FC-101	Clip, Fuse, 1/2 I.D.
2	4	MS-1908	Plate, Connecting, Triple
1	3	MS-1478	Plate, Connecting
7	2	MS-1479	Plate, Connecting, Small
1	1	PX-454 (LD-563)	Board, HV Resistors, Side

SYM	ZONE	DESCRIPTION	DATE	CH. NO.	DRAFTS	CHECKER	ENG. APP.
D		IT 10 WAS "SCFS" IT 8 & 9 WERE "SCBS"	11/3/66	17092	RME		
C		ITEM 19 WAS CA-409-62-36.00	6/17/64	11600	A.M.		

UNLESS OTHERWISE SPECIFIED:  
DIMENSIONS ARE IN INCHES  
TOLERANCES ON  
FRACTIONS ± 1/64    DECIMALS ± .005    ANGLES ± 1/2°

SCALE  
MAXIMUM ALLOWABLE TOLERANCES HAVE BEEN DETERMINED AND ANY DEVIATIONS WILL BE CAUSE FOR REJECTION.  
REMOVE ALL BURRS & SHARP EDGES

REQ. PER UNIT	MODEL	SECTION	ASS'Y. NO.	DATE
1	GPT-10K	AX-138		4-11-61

THE TECHNICAL MATERIEL CORP. MAMARONECK, NEW YORK	
AX-254 ASSEMBLY (HV RESISTOR BOARD, SIDE)	
DRAWN	CHECKED
FINAL APPROVAL	
A-2088	
ELEC. DES. APP.	MECH. DES. APP.
SHEET OF	