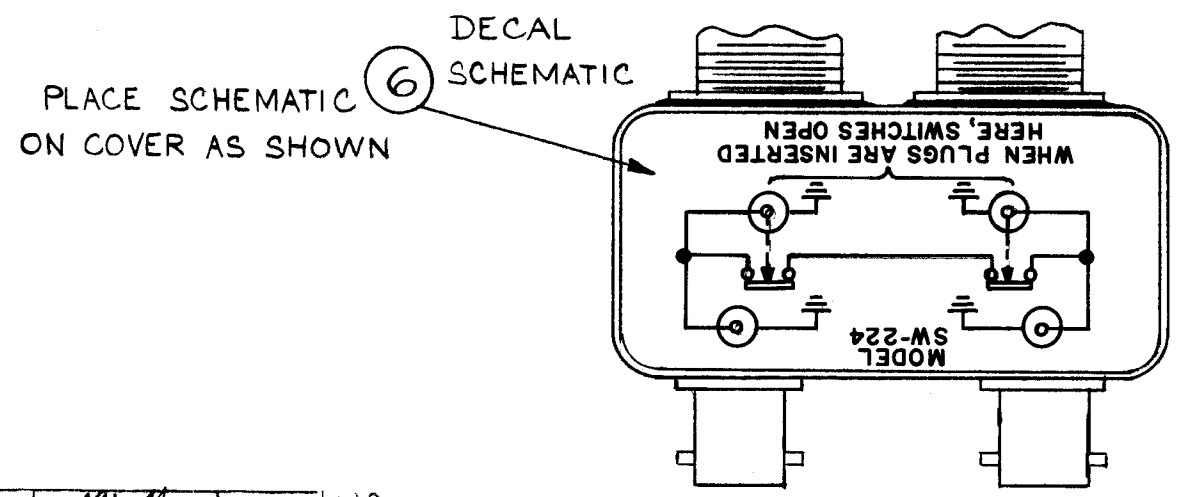
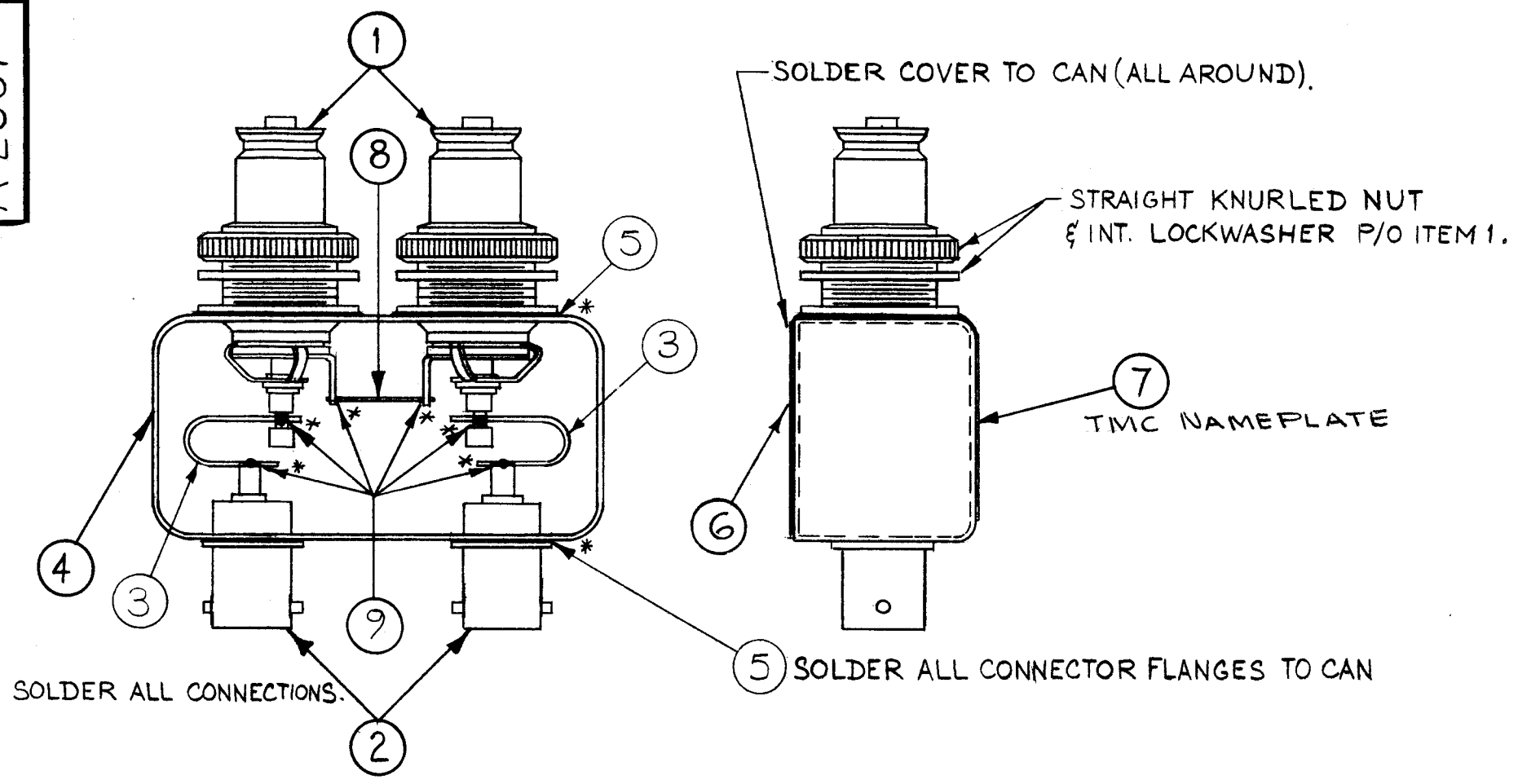


A-2087 D



NOTES

1. INDUCTION HEATING EQUIPMENT SET AT:
AMPERES -
SECONDS -
2. USE ITEM (5) FOR MOUNTING ITEM (1) AND ITEM (2).
3. USE ITEM (9) FOR MOUNTING ITEM (3), ITEM (8) AND SEALING COVER ITEM (4).
4. STRAP ITEM (3) MUST BE KEPT AS FLEXIBLE AS POSSIBLE. DO NOT ALLOW SOLDER TO RUN OVER STRAP. LAY STRAP IN SO THAT IT CANNOT TOUCH CAN OR CONNECTOR BODIES.
5. FINISH:
S-114 - ZINC CHROMATE PRIMER
S-115 - TMC SMOOTH GRAY ENAMEL
(DO NOT PAINT CONNECTOR BODIES)
6. AFFIX ITEM (6) TO FRONT AS SHOWN.
7. AFFIX ITEM (7) TO REAR AS SHOWN.
8. * DENOTES SOLDER ALL AROUND.

REQ.	ITEM	PART NO.	DESCRIPTION	SYMBOL
1	10	TG-100	TAG, INSTR.	
X	9	BS-100	SOLDER, TIN ALLOY	
1	8	WL-100-5	WIRE, BUSS-BAR, #18	
1	7	NP-488	NAMEPLATE, TMC	
1	6	NP-225-3	SCHEMATIC DIAGRAM	
X	5	BS-100-2	SOLDER, TIN ALLOY	
1	4	BX-157-2	CASE & COVER	
2	3	MS-1769	FLEXIBLE, STRAP CONNECTOR	
2	2	JJ-249	CONNECTOR, RECEPTACLE	
2	1	JJ-162	CONNECTOR, RECEPTACLE, SWITCH TYPE	
#			THE TECHNICAL MATERIEL CORP. MAMARONECK, NEW YORK	
#			FINAL ASS'Y	
#			SW-224	
#		#	M.A.F.	J.D.
#		#	DRAWN	CHECKED
#		#	16	C.M.A.
#		#	FINAL APPROVAL	
#		#	A-2087 D	

ISSUE	ITEM	CHANGED FROM	DATE	CH. NO.	DRAFTS	CHECKER	ENG. APP.
D		IT. 10 ADDED TO B/M	10-28-67	18547	HLL		EFM
C	1	IT. 7 WAS NP-224	9-15-66	16852	RME		
B		ITEM 4 WAS BX-180 IT. 5 WAS BS-106-4 IT 9 WAS BS-106-2	4-19-66	16102	WHD		
A	4	PICTORIAL CLARIFIED	2-28-63	8	3	J.D.	EFM
	3	NOTES CLARIFIED					
	2	ITEM (2) WAS UG-625/U; ITEM (9) ADDED					
1		ITEM (5) WAS BS-106-1					

TOLERANCES

DEC. DIM. ±
FRAC. DIM. ±
ANGULAR DIM. ±

SCALE: DO NOT SCALE

MAXIMUM ALLOWABLE TOLERANCES HAVE BEEN DETERMINED AND ANY DEVIATIONS WILL BE CAUSE FOR REJECTION.
REMOVE ALL BURRS AND SHARP EDGES

REQ. PER UNIT: SW-224

PROJECT NO. _____ ASSY. NO. _____ DATE: 4-17-61

USED ON _____