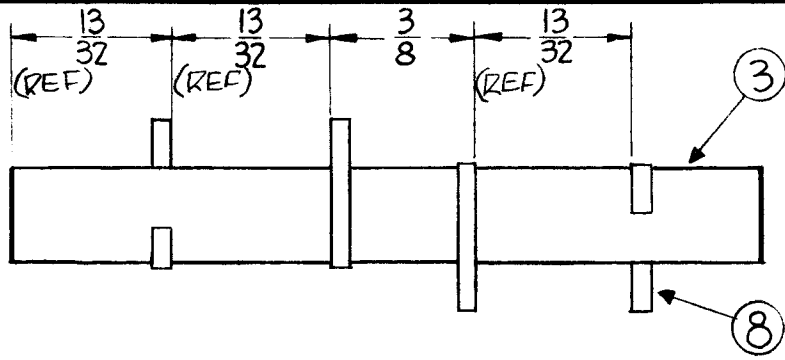
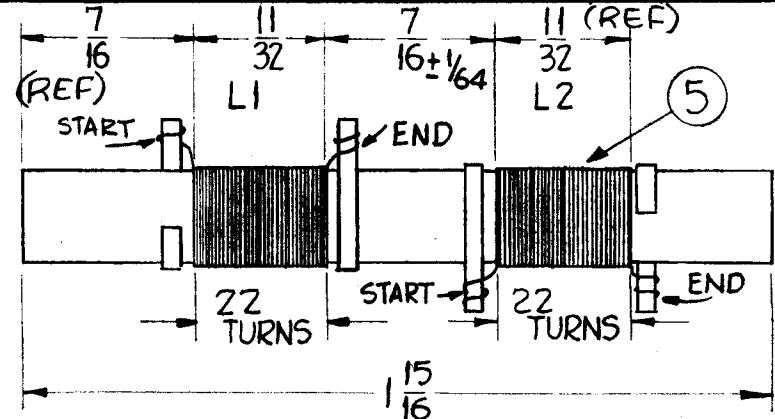


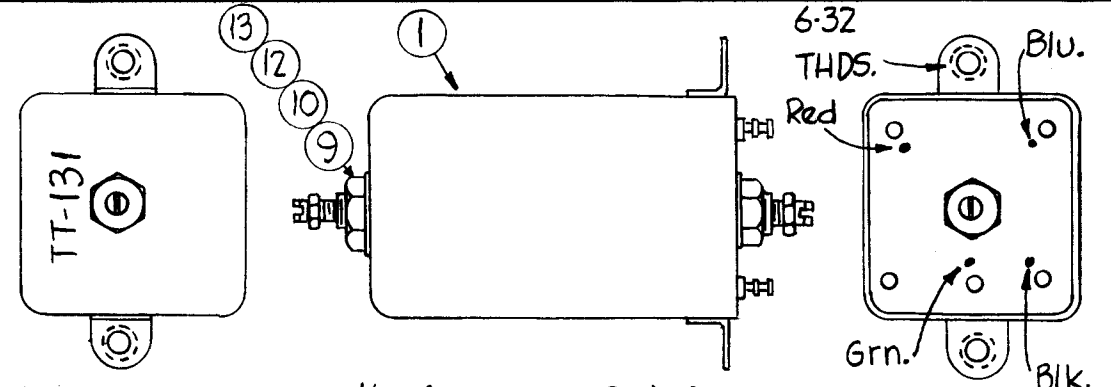
A 2084 E



(1) RING LAYOUT



(2) WINDING DETAIL



Stamp Can as shown 1/8 High Black Gothic.
NOTE ~ Stamp TMC Insignia & Approval on side of can.

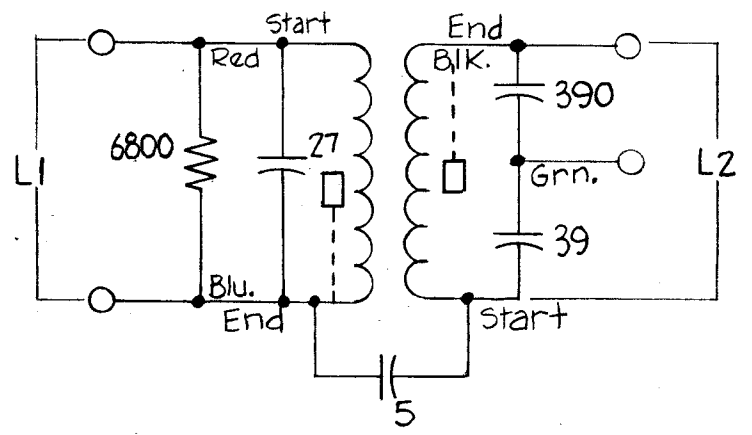
WINDING DATA

1. Assemble Ring Terminals on form as shown and stake with GL-104-2 (ITEM 7).
2. Wind Coils as specified, staking and coating with GL-104-2.
3. Bake until hard for 1 hour at 215°F.
4. Test and Assemble as shown.

TEST DATA

$L_1 = L_2 = 2 \mu h \pm 10\%$
 $Q = 55$ or Greater
FREQ. = 7.9 MCS

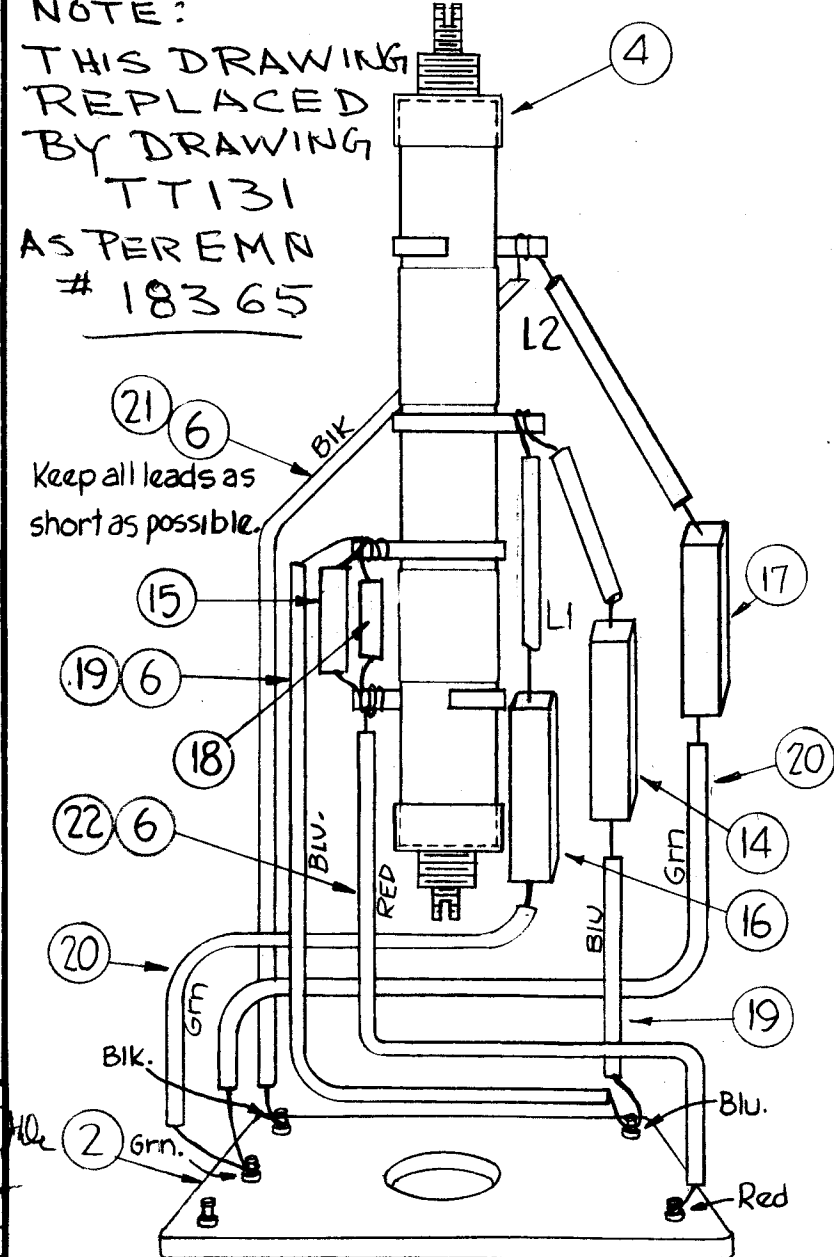
Use Boonton Radio Corp. Q Meter Model 160A or Equivalent.



SCHMATIC

NOTE:

THIS DRAWING
REPLACED BY DRAWING
TT131
AS PER EMN
18365



COLOR CODE TERMINAL BOARD AS SHOWN UPPER RIGHT.

REQ.	ITEM	PART NO.	DESCRIPTION	SYMBOL
X	22	PX-104-3-.034	Sleeving, Insulation	Red
X	21	PX-104-1-.034		Black
X	20	PX-104-4-.034		Green
X	19	PX-104-6-.034	Sleeving, Insulation	Blue
1	18	RC206F682J	Resistor, Fixed	
1	17	CM15F391J03	Capacitor, Fixed	
1	16	CM15C390J03		
1	15	CM15C270J03		
1	14	CM15C050J03YY	Capacitor, Fixed	
2	13	NTH0348BN6	Nut, Hex.	
2	12	CI-116-5	Core Tuning	
X	11	BS-100	Solder, Soft	
2	10	NTH0832BN10	Nut, Hex.	
2	9	LW108MRN	Lockwasher	
4	8	TE-153-1	Terminal Ring	
X	7	GL-104-2	Insulex	
X	6	WL-100-7	Wire, Buss-Bar	
X	5	WI-123-28	Wire	
2	4	SM-140-2	Bushing, Coil Mounting	
1	3	CF-122-1.93	Coil Form 1/4" O.D.	
1	2	PX-586-1	Terminal Board	
1	1	A-1950-1	Can Assembly	

SYM	DESCRIPTION	DATE	CH. NO.	DRAFTS	CHECKER	ENG. APP.
E	REPLACED BY TT131	7-20-61	18365	WHD	[Signature]	EM
D	B/U UPDATED; REF ADD TO DIM	4-6-67	17673	WHD	[Signature]	[Signature]
C	TEST DATA Q 55 WAS 90	8-29-61	5508	E.A.	[Signature]	[Signature]
B	ITEM 13 WAS NTH0348BN16	7-18-61	5288	WHD	[Signature]	[Signature]
A	ITEM 8 WAS TE-153-Z	4/26/61	4716	[Signature]	[Signature]	[Signature]

UNLESS OTHERWISE SPECIFIED:
DIMENSIONS ARE IN INCHES
TOLERANCES ON FRACTIONS $\pm 1/64$ DECIMALS $\pm .005$ ANGLES $\pm 1/2^\circ$

SCALE:
MAXIMUM ALLOWABLE TOLERANCES HAVE BEEN DETERMINED AND ANY DEVIATIONS WILL BE CAUSE FOR REJECTION. REMOVE ALL BURRS AND SHARP EDGES

REQ. PER UNIT	MODEL	SECTION	ASS'Y. NO.	DATE
1	CHG-1		I.F.	4-4-61
USED ON				

REQ.	ITEM	PART NO.	DESCRIPTION	SYMBOL
THE TECHNICAL MATERIEL CORP. MAMARONECK, NEW YORK				
STOCK SIZE				
TT-131 TRANSFORMER ASSEMBLY 14.25 - 16.25 MC OUTPUT				
MATERIAL				
TYPE & TEMPER	HEAT TREAT. SPEC.	DRAWN	CHECKER	FINAL APPROVAL
		[Signature]	[Signature]	[Signature]
FINISH & SPEC. NO.	ELEC. DES. APP.	MECH. DES. APP.	A-2084 E	