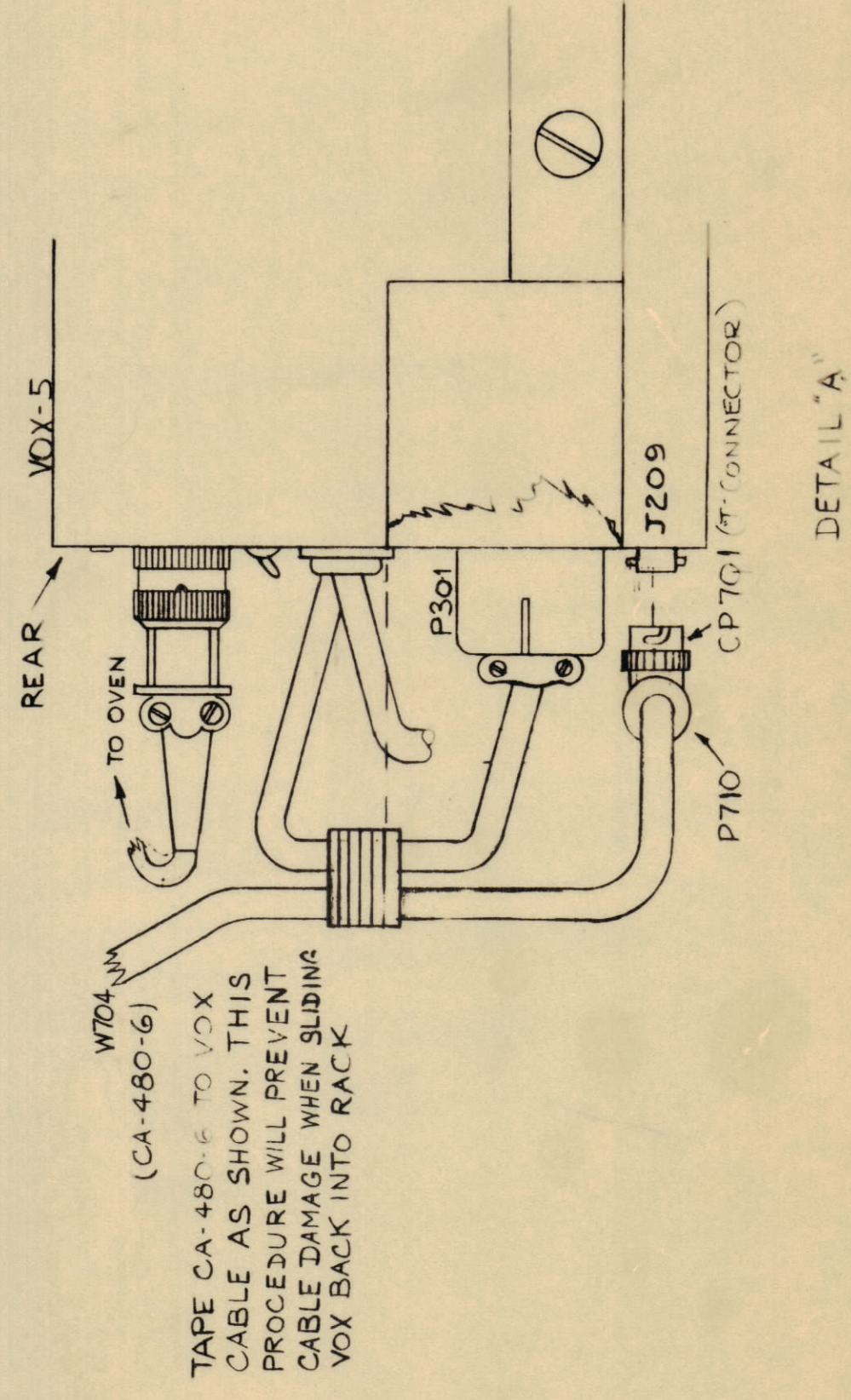


NOTE - CABLES SHOULD BE INSTALLED BEFORE SLIDE TRACKS. SLIDES NOT SHOWN ON LEFT SIDE FOR CLARITY.



DETAIL 'A'

NOTICE TO PERSONS RECEIVING THIS DRAWING
 THE TECHNICAL MATERIEL CORPORATION claims proprietary right in the material disclosed hereon. This drawing is issued in confidence for engineering information only and may not be re-produced or used to manufacture anything shown hereon without permission from THE TECHNICAL MATERIEL CORPORATION to the user. This drawing is loaned for mutual assistance and is subject to recall at any time.

Property of:
 THE TECHNICAL MATERIEL CORPORATION
 MAMARONECK, NEW YORK

SYM	ZONE	DESCRIPTION	DATE	CH. NO.	DRAFTS	CHECKER	ENG. APP.
UNLESS OTHERWISE SPECIFIED:							
DIMENSIONS ARE IN INCHES			SCALE				
TOLERANCES ON FRACTIONS ± 1/64 DECIMALS ± .005 ANGLES ± 1/2							
MAXIMUM ALLOWABLE TOLERANCES HAVE BEEN DETERMINED AND ANY DEVIATIONS WILL BE CAUSE FOR REJECTION REMOVE ALL BURRS & SHARP EDGES							

- AX-247
- SCBS0632BN4 4 PER FOR AC STRIP MTG
- LWEO8MRN 4 PER
- NOTE: SAME MTG HARDWARE FOR ALL CLAMPS
- RIGHT SIDE
- MS-7527
- HOLE
- SCBS0832BN8 LWEO8MRN NTH0832BN10 2 EACH
- SCBS0832BN8 LWEO8MRN 3 EACH

REQ PER UNIT	MODEL	SECTION	ASSY. NO.	DATE
1	RACK-9B			2/11/61
USED ON				

REQ. ITEM	PART NO.	DESCRIPTION	SYMBOL
THE TECHNICAL MATERIEL CORP. MAMARONECK, NEW YORK			
INSTALLATION AC STRIP CABLEING RACK			
DRAWN	CHECKED	FINAL APPROVAL	
RE		A-2080	
FINISH & SPEC. NO.		ELEC. DES. APP.	MECH. DES. APP.
		SHEET OF	

A 2080