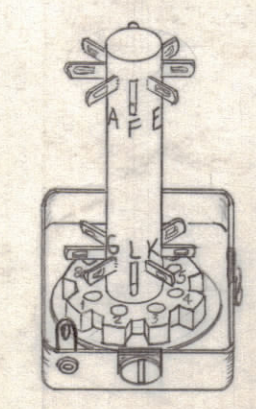


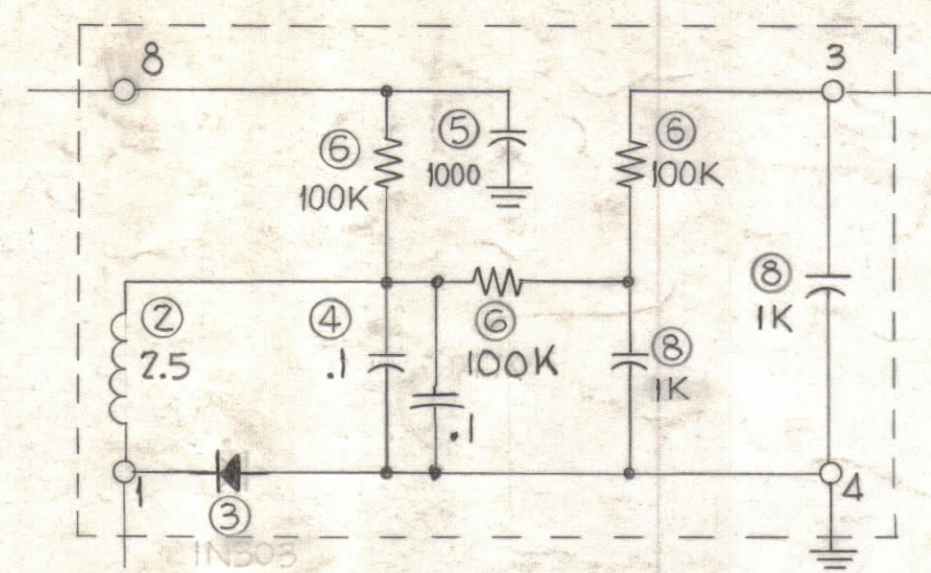
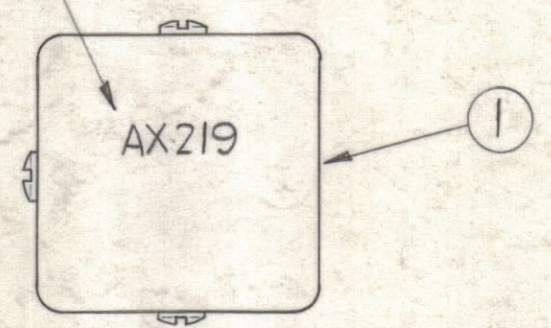
TEST PROCEDURE

RESISTANCE WITH RESPECT TO PIN 4			
PIN	RESISTANCE		
1	Approx. Inf.	Tol. IN303	NEG.(GND.)
2	N.C.		
3	200 KΩ	10%	POS.(GND.)
4	Gnd Ω		
5	N.C.		
6	N.C.		
7	N.C.		
8	100 KΩ	10%	POS.(GND.)

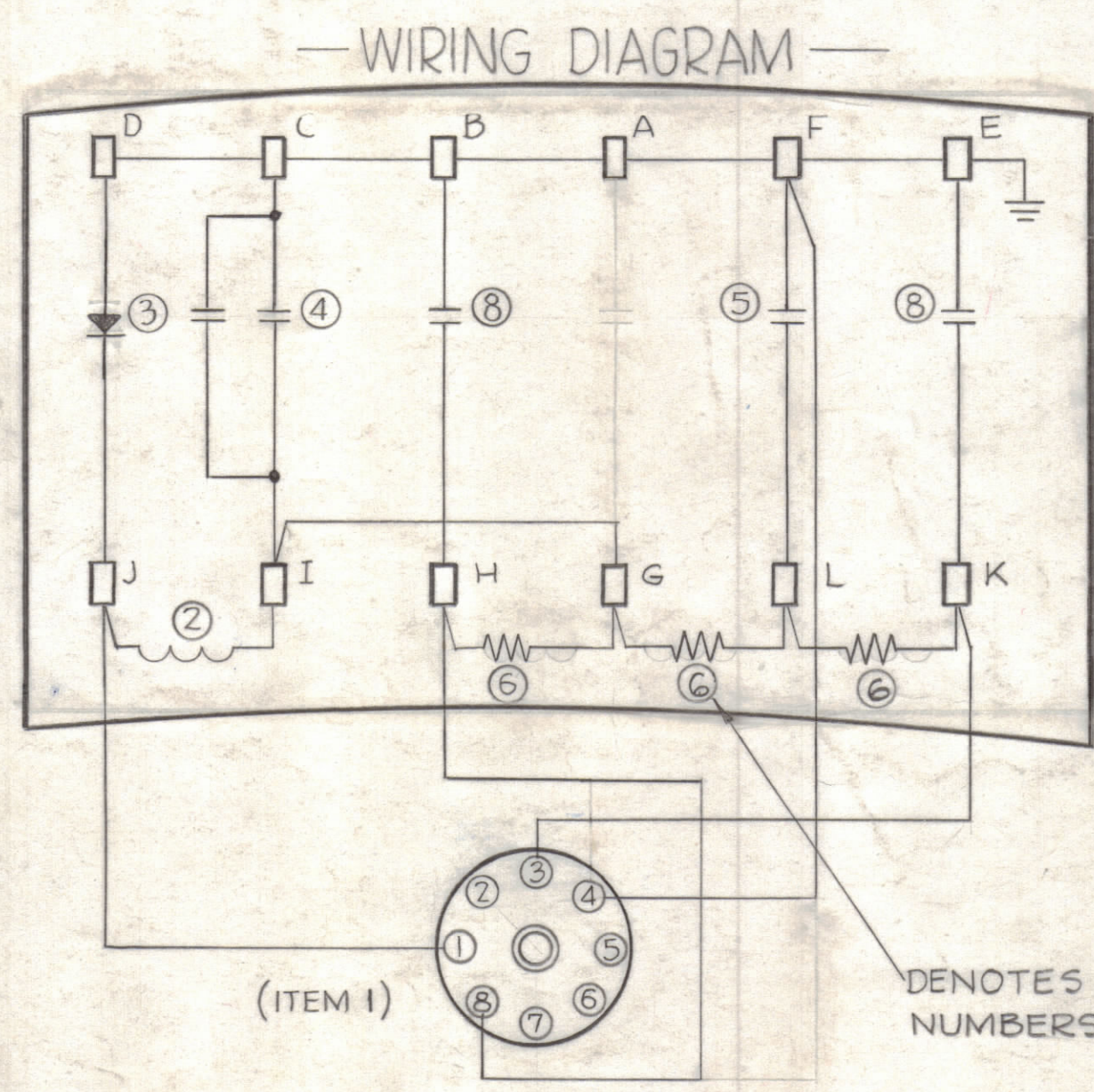
Measurements Taken with Simpson 260
 • Dot or Band denotes Cathode



STAMP TMC PART NO. 1/8 HIGH BLACK GOTHIC AS SHOWN. (ON COVER)



—SCHEMATIC—



—WIRING DIAGRAM—

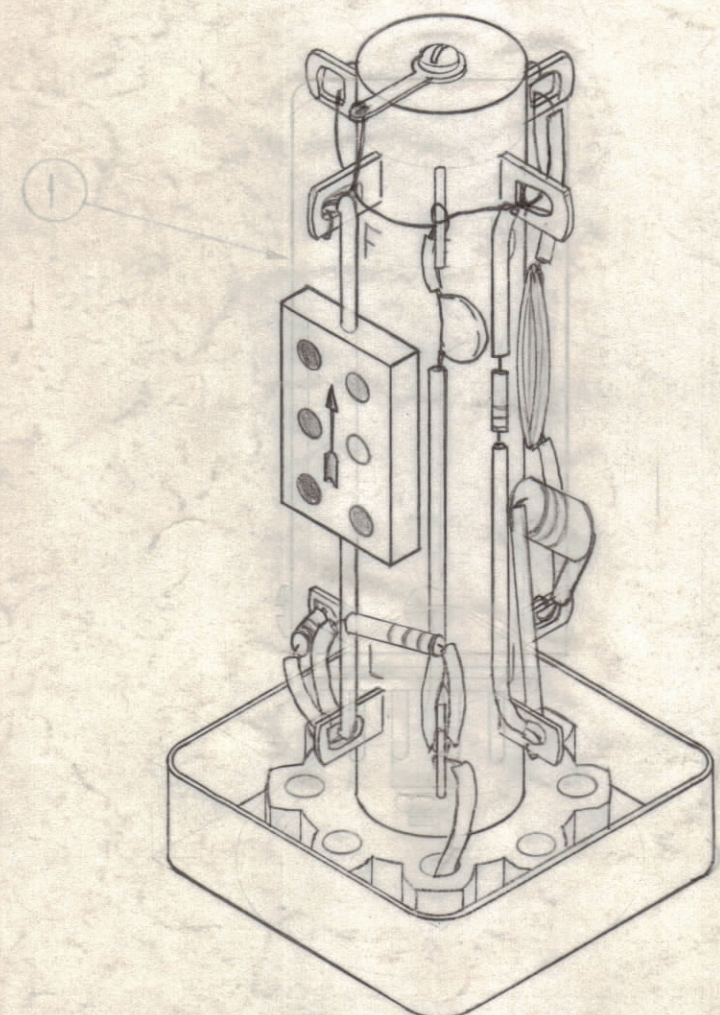
DENOTES ITEM NUMBERS.

NOTES

1. TURRET, SHOWN IN FLATTENED VIEW FOR CLARITY.
2. WIRE PIN 'F' OF TURRET TO GROUND LUG PROVIDED ON CAN.
3. WIRE AS SHOWN ABOVE. USE SLEEVING ON ALL WIRES. (ITEMS 11 & 12) SOLDER ALL CONNECTIONS.
4. ALL WIRING TO BE WL-100-6 (ITEM 10).

TYPICAL ARRANGEMENT OF COMPONENTS

NOTE ~ KEEP ALL COMPONENTS CLOSE TO TURRET, AND ALL LEADS SHORT AS POSSIBLE.



REQ.	ITEM	PART NO.	DESCRIPTION	SYMBOL
X	12	PX 104-2 - 034	INSULATION SLEEVING	Red
X	11	PX 104-1 - 034	INSULATION SLEEVING	Black
X	10	WL 100-6	WIRE, BUSS-BAR, TINNED	
X	9	B5 100	SOLDER, SOFT	
2	8	CM20F102G03	CAPACITOR, MICA, FIXED	
		DELETED 0K	RESISTOR, FIXED, CARBON	
3	6	RC20GF104J	RESISTOR, FIXED, CARBON	
1	5	CC 100-9	CAPACITOR, DISK	
2	4	CC 100-28	CAPACITOR, DISK	
1	3	IN303	DIODE	
1	2	CL 140-1	COIL	
1	1	PO 106-3T	VECTOR, SOCKET	

THE TECHNICAL MATERIEL CORP. MAMARONECK, NEW YORK			
AX-219 ASSEMBLY			
DETECTOR NETWORK, METER CK'T			
FINISH & SPEC. NO.	ELEC. DES. APP.	MECH. DES. APP.	SHEET OF
	<i>P.J. Man</i>	<i>J.D.</i>	<i>2B</i>
	DRAWN	CHECKED	FINAL APPROVAL
	<i>2B</i>		<i>2B</i>
			A 2070 E

SYM	ZONE	DESCRIPTION	DATE	CH. NO.	DRAFTS	CHECKER	ENG. APP.
E		ADD GND. NOTATIONS TO TEST PROCEDURE	10/21/72	20905	GE	<i>SP</i>	<i>SP</i>
D		IT. 8 WAS CM20B102K. IT. 6 RES. TOL WAS 'K'	3-1-47	17874	RME	<i>SP</i>	<i>SP</i>
C		REMOVED CATHODE DOT NOTE; REVISED DIRECTION OF BLDGE. ADD (1) TO ITEM #6, WAS ITEM #7	2/17/66	15802	JL	<i>SP</i>	<i>aa</i>
B	H1,2	TEST PROCEDURE CHART, PIN 3 WAS 147KΩ 10% ITEM #7 DELETED	5-10-62	6674	RZ	<i>SP</i>	<i>2B</i>
A	E5	ITEM 4 QUAN WAS 1 (CC-100-28)	4-12-61	4636	<i>SP</i>	<i>SP</i>	<i>2B</i>

UNLESS OTHERWISE SPECIFIED:
 DIMENSIONS ARE IN INCHES
 TOLERANCES ON FRACTIONS ± 1/64 DECIMALS ± .005 ANGLES ± 1/2°
 SCALE: MAXIMUM ALLOWABLE TOLERANCES HAVE BEEN DETERMINED AND ANY DEVIATIONS WILL BE CAUSE FOR REJECTION. REMOVE ALL BURRS & SHARP EDGES

REQ. PER UNIT	MODEL	SECTION	ASS'Y. NO.	DATE
2	GPT-40K			3-3-61