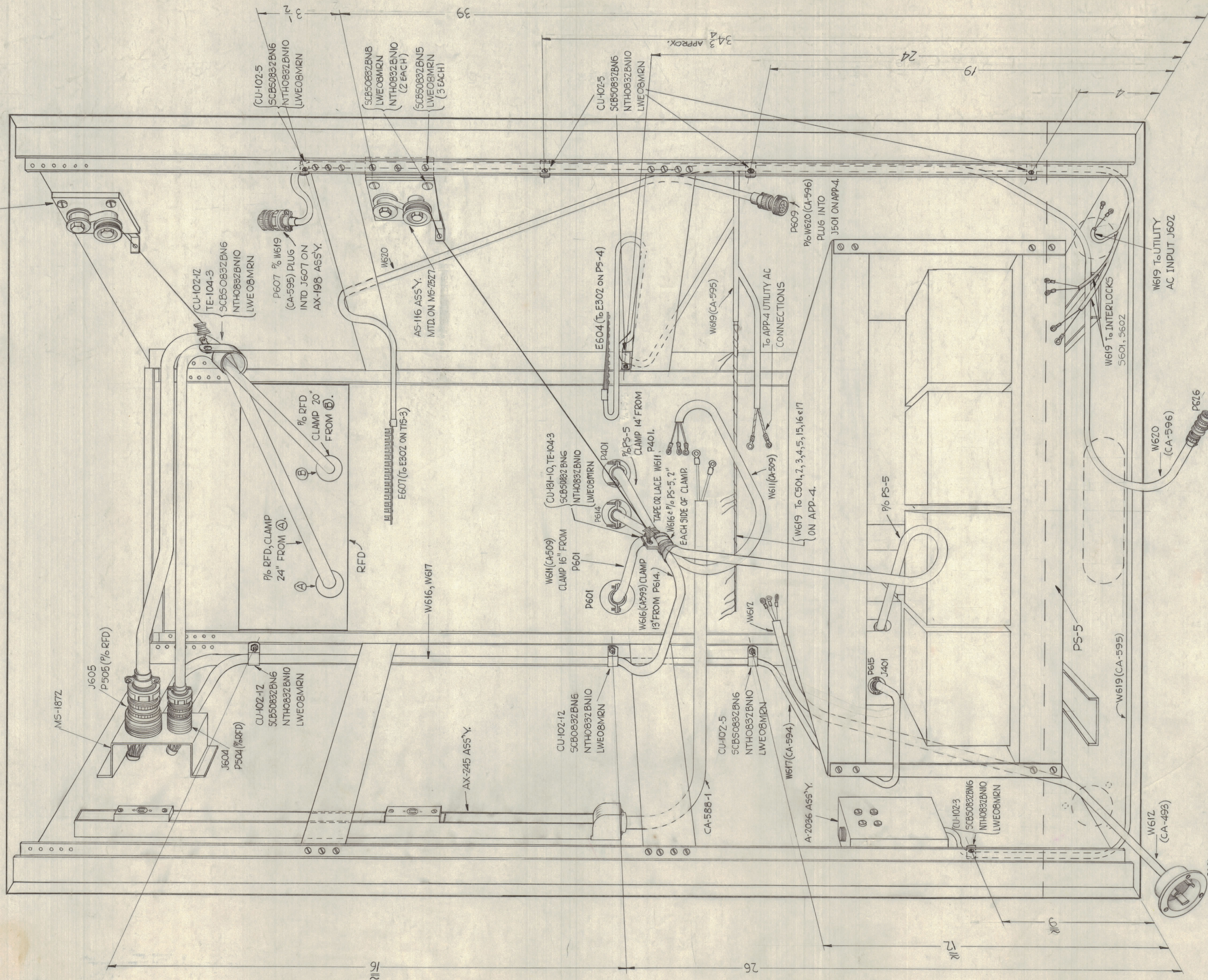


NOTICE TO PERSONS RECEIVING THIS DRAWING

THE TECHNICAL MATERIEL CORPORATION claims proprietary right in the material disclosed herein. This drawing is issued in confidence for engineering information only and may not be reproduced or used to manufacture anything shown hereon without permission from THE TECHNICAL MATERIEL CORPORATION to the user. This drawing is loaned for mutual assistance and is subject to recall at any time.

Property of:
THE TECHNICAL MATERIEL CORPORATION
MAMARONECK, NEW YORK

AS-116 ASS'Y.
MTD. ON
AX-198 ASS'Y.



NOTES:
PS-5 SHOWN IN RACK IN NORMAL OPERATING POSITION.
RFD SHOWN IN FULLY EXTENDED SLIDE POSITION WITH SLIDES REMOVED FOR CLARITY.
ALL MEASUREMENTS TO CLAMPS ARE APPROX. WITH REFERENCE TO NEAREST MTG. HOLE.

A-2063

SYM	ZONE	DESCRIPTION	DATE	CH. NO.	DRAFTS	CHECKER	ENG. APP.
UNLESS OTHERWISE SPECIFIED:			SCALE				
DIMENSIONS ARE IN INCHES			MAXIMUM ALLOWABLE TOLERANCES HAVE BEEN DETERMINED AND ANY DEVIATIONS WILL BE CAUSE FOR REJECTION. REMOVE ALL BURRS & SHARP EDGES				
TOLERANCES ON FRACTIONS ± 1/64			DECIMALS ± .005		ANGLES ± 1/2°		

REQ. UNIT	MODEL	SECTION	ASBY. NO.	DATE	FINISH & SPEC. NO.	ELEC. DES. APP.	MECH. DES. APP.	SHEET OF
3	SBT-IKE,G			3-61				1

REQ. ITEM	PART NO.	DESCRIPTION	SYMBOL
THE TECHNICAL MATERIEL CORP. MAMARONECK, NEW YORK			
INSTALLATION, RACK, CABLING, SLIDES			
SBT-IKE,G			
DRAWN: [Signature] CHECKED: [Signature] FINAL APPROVAL: [Signature]			
A-2063			