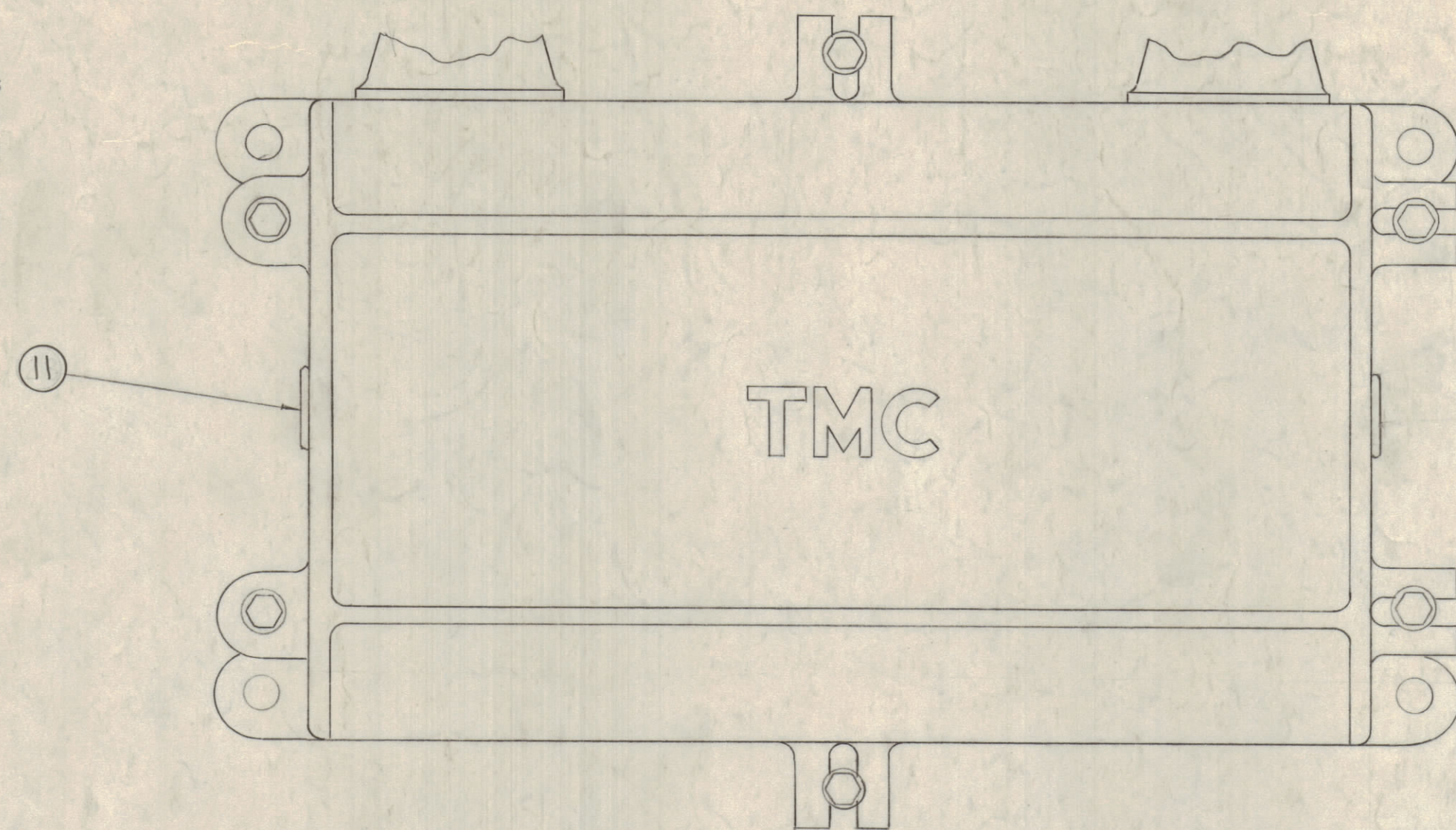


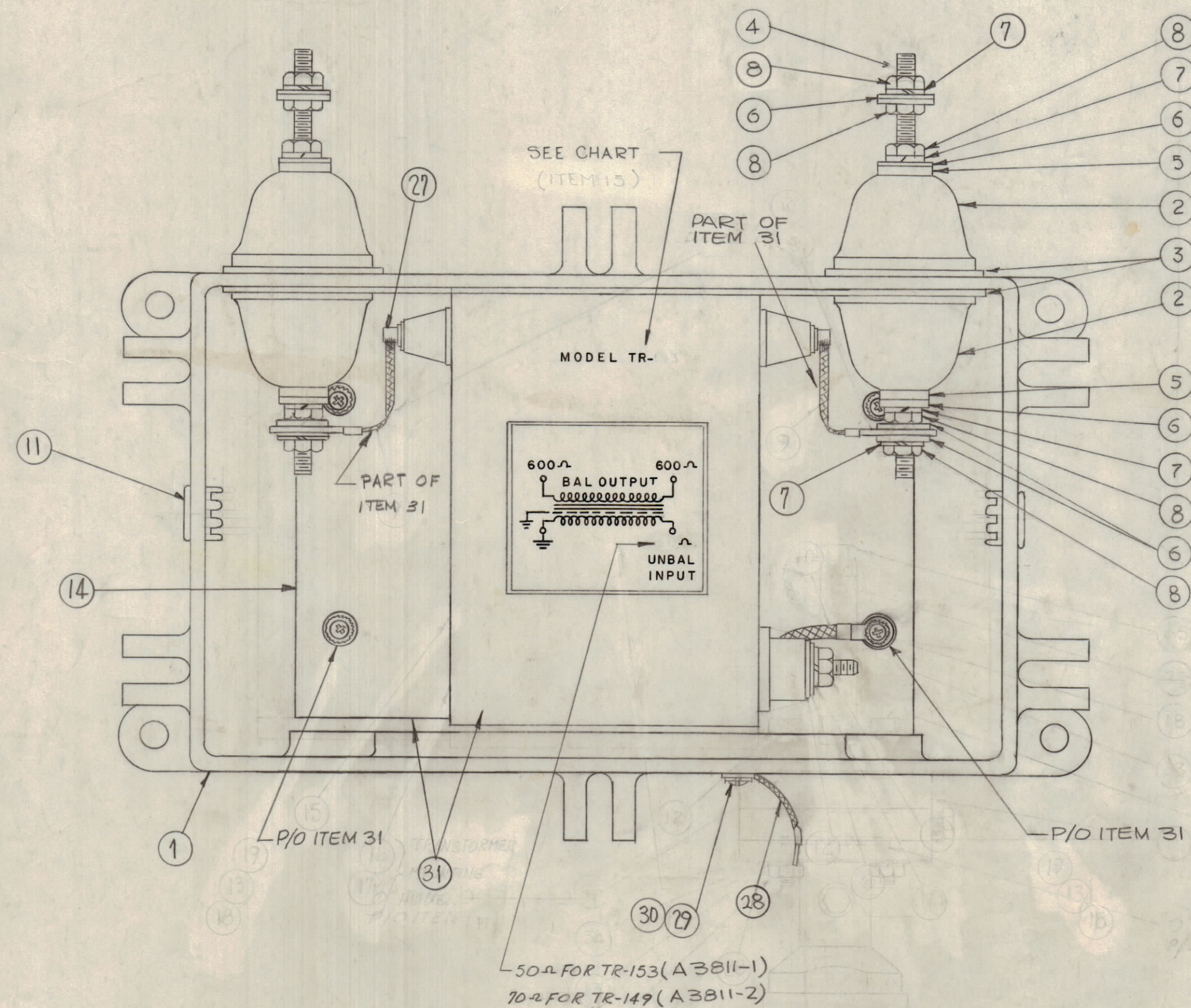
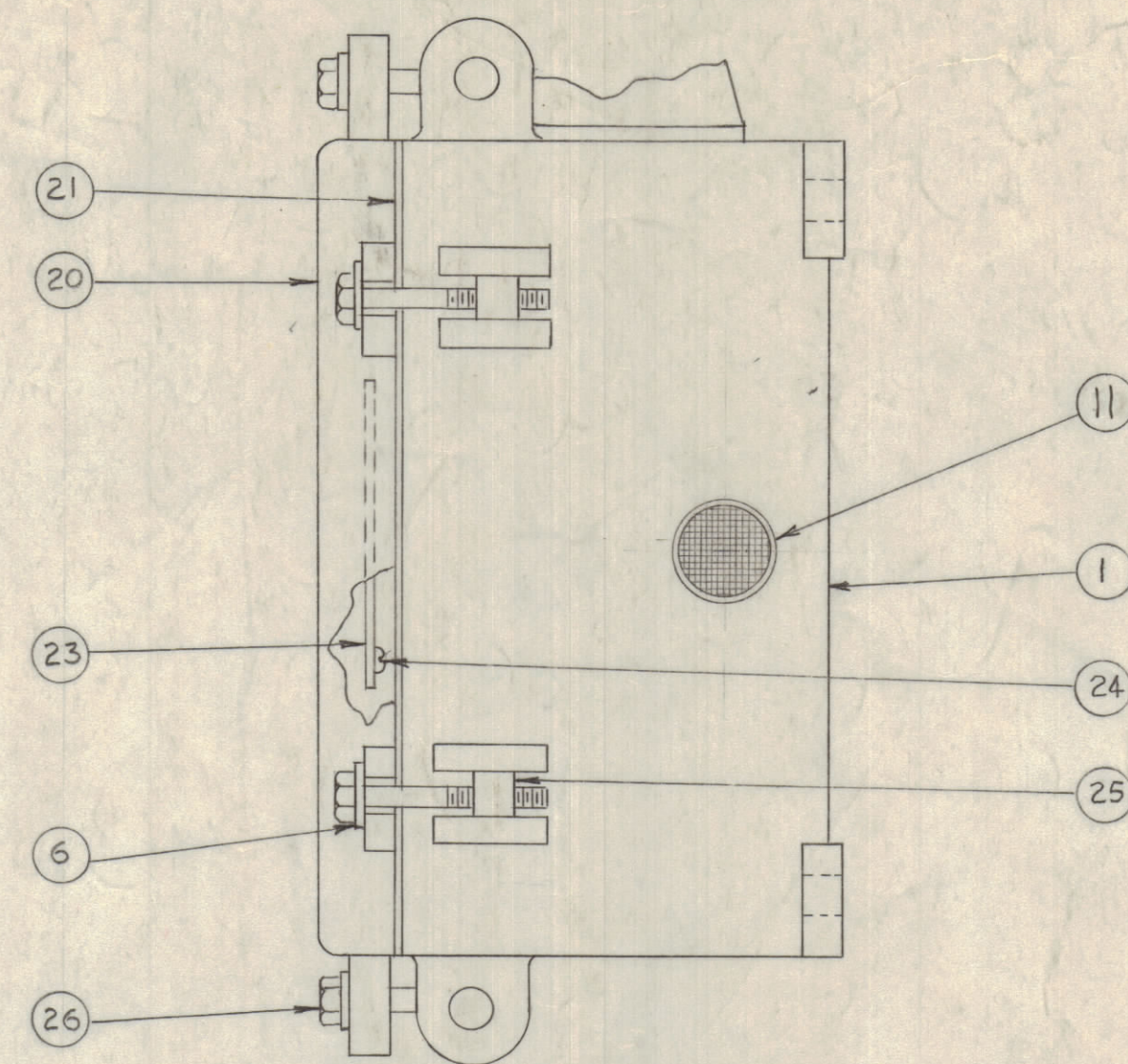
**NOTICE TO PERSONS RECEIVING THIS DRAWING**

THE TECHNICAL MATERIEL CORPORATION claims proprietary right in the material disclosed herein. This drawing is issued in confidence for engineering information only and may not be reproduced or used to manufacture any item shown hereon without permission from THE TECHNICAL MATERIEL CORPORATION to the user. This drawing is loaned for mutual assistance and is subject to recall at any time.

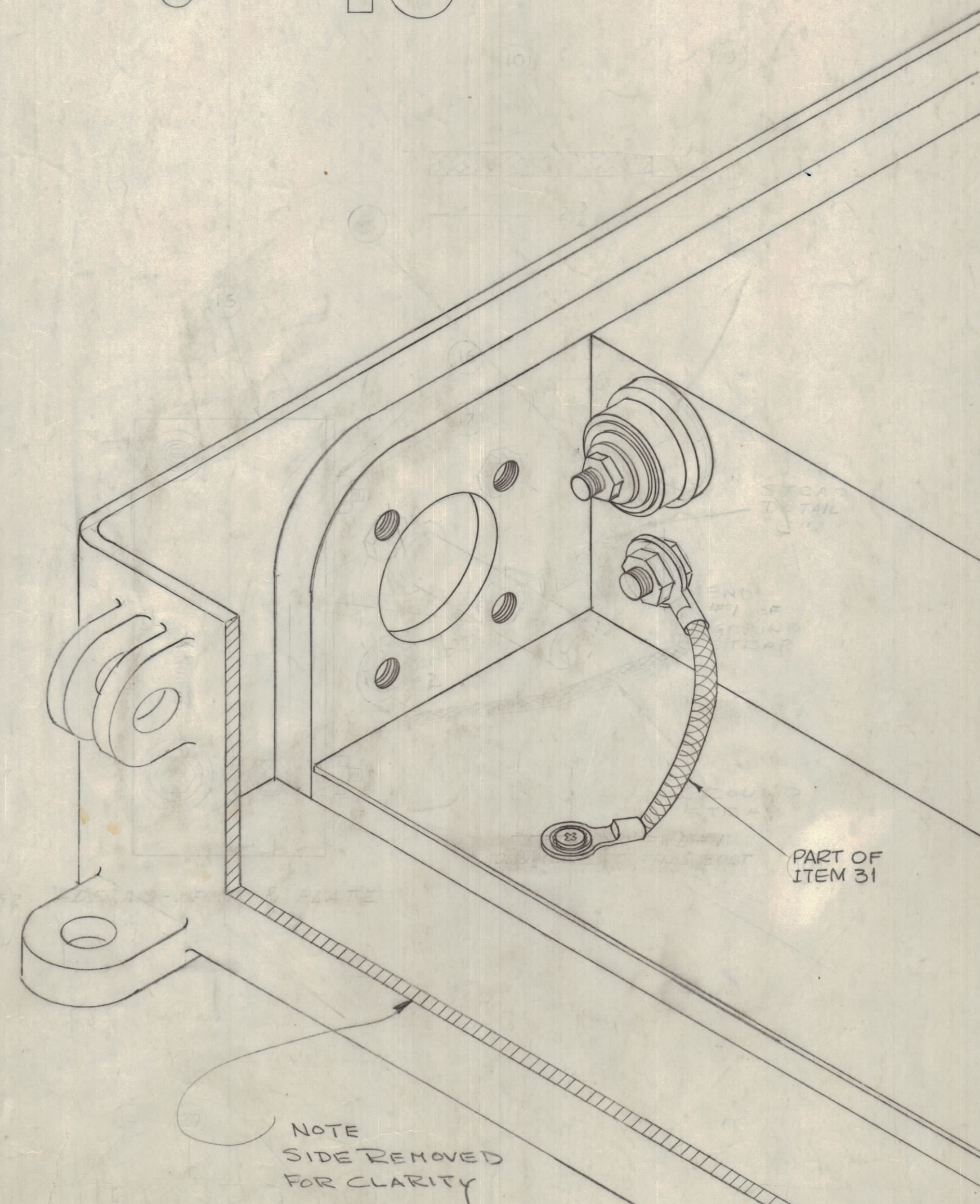
Property of:  
THE TECHNICAL MATERIEL CORPORATION  
MAMARONECK, NEW YORK



CEMENT ITEM (21) TO ITEM (20) WITH ITEM (22)



TMC ASSY. NO.	ITEM 31	ITEM 23	USED ON	CONTAINS XFMR
A-2062-1	A3811-1	LD-623	TRC-3500-500-600 B	TR153
A-2062-2	A3811-2	LD-253	TRC-3500-700-600 B	TR149



REQ.	ITEM	PART NO.	DESCRIPTION	SYMBOL
1	31	SEE CHART	XFMR / PLATE ASS'Y	
1	30	LWS10MSS	LOCKWASHER, SPRING TYPE	
1	29	SCBP1032SS6	SCREW, MACHINE	
1	28	CA-409-69-2.00	CABLE ASSY, JUMPER	
X	27	DELETED	WASHER, SOFT	
6	26	SCH2520SS28	BOLT, HEX	
6	25	PM-100	PIN, COVER BOLT	
4	24	SFB0256SNA	SCREW, THD, CUTTING	
1	23	SEE CHART	SCHEMATIC DIAGRAM	
X	22	GL-101-2	CEMENT, PLIOBOND	
1	21	GA-107	GASKET	
1	20	PM-114	COVER	
X	19	DELETED	SCREW MACHINE	
X	18	DELETED	WASHER, LOCK	
X	17	DELETED	NUT, HEX	
X	16	DELETED	WASHER, LOCK	
X	15	DELETED	TRANSFORMER	
X	14	DELETED	PLATE MOUNTING	
X	13	DELETED	WASHER, FLAT	
X	12	DELETED	WASHER, FLAT	
2	11	HB-103	PLUG, BUTTON	
1	10	DELETED	SCREW, MACHINE	
2	9	DELETED	SCREW, MACHINE	
10	8	NTH 2520SS14	NUT, HEX	
8	7	LWS25MSS	LOCKWASHER, SPRING TYPE	
18	6	FW 25H55	WASHER, FLAT	
4	5	RY-112	GLAND, MODIFIED	
2	4	A-100	STUD ASS'Y	
4	3	GA-126	GASKET, INNER	
4	2	NS-115	CAP, INSULATING	
1	1	PM-357	CASE	

SYM	ZONE	DESCRIPTION	DATE	CH. NO.	DRAFTS	CHECKER	ENG. APP.
D	~	A3811-1 WAS TR-153, A3811-2 WAS TR-149, XFMR COLUMN ADDED, ITEM 31 ADDED, ITEM 6 WAS 19 REQ. IT 7 WAS 0 REQ. IT 8 WAS 11 REQ.	9-19-64	12317	SRG	a	
C	B	ITEMS 31, 12 TO 19, 27 DELETED	6-18-63	9306	G.B.L.		
A	~	DRAWING & BUILDUP REVISED	8-9-62	7049	G.B.L.		

UNLESS OTHERWISE SPECIFIED:  
DIMENSIONS ARE IN INCHES  
TOLERANCES ON FRACTIONS ± 1/64 DECIMALS ± .005 ANGLES ± 1/2°  
SCALE  
MAXIMUM ALLOWABLE TOLERANCES HAVE BEEN DETERMINED AND ANY DEVIATIONS WILL BE CAUSE FOR REJECTION. REMOVE ALL BURRS & SHARP EDGES

REQ. PER UNIT	MODEL	SECTION	ASS'Y. NO.	DATE
1	TRC-3500-700-600 B			8-9-62
1	TRC-3500-500-600 B			2-23-61

STOCK SIZE	MATERIAL	TYPE & TEMPER	HEAT TREAT. SPEC.	FINISH & SPEC. NO.	ELEC. DES. APP.	MECH. DES. APP.	SHEET OF
THE TECHNICAL MATERIEL CORP. MAMARONECK, NEW YORK							
FINAL ASSEMBLY BASIC TRC-3500							
DRAWN		CHECKED		FINAL APPROVAL			
da		da		A-2062		D	

A-2062 D