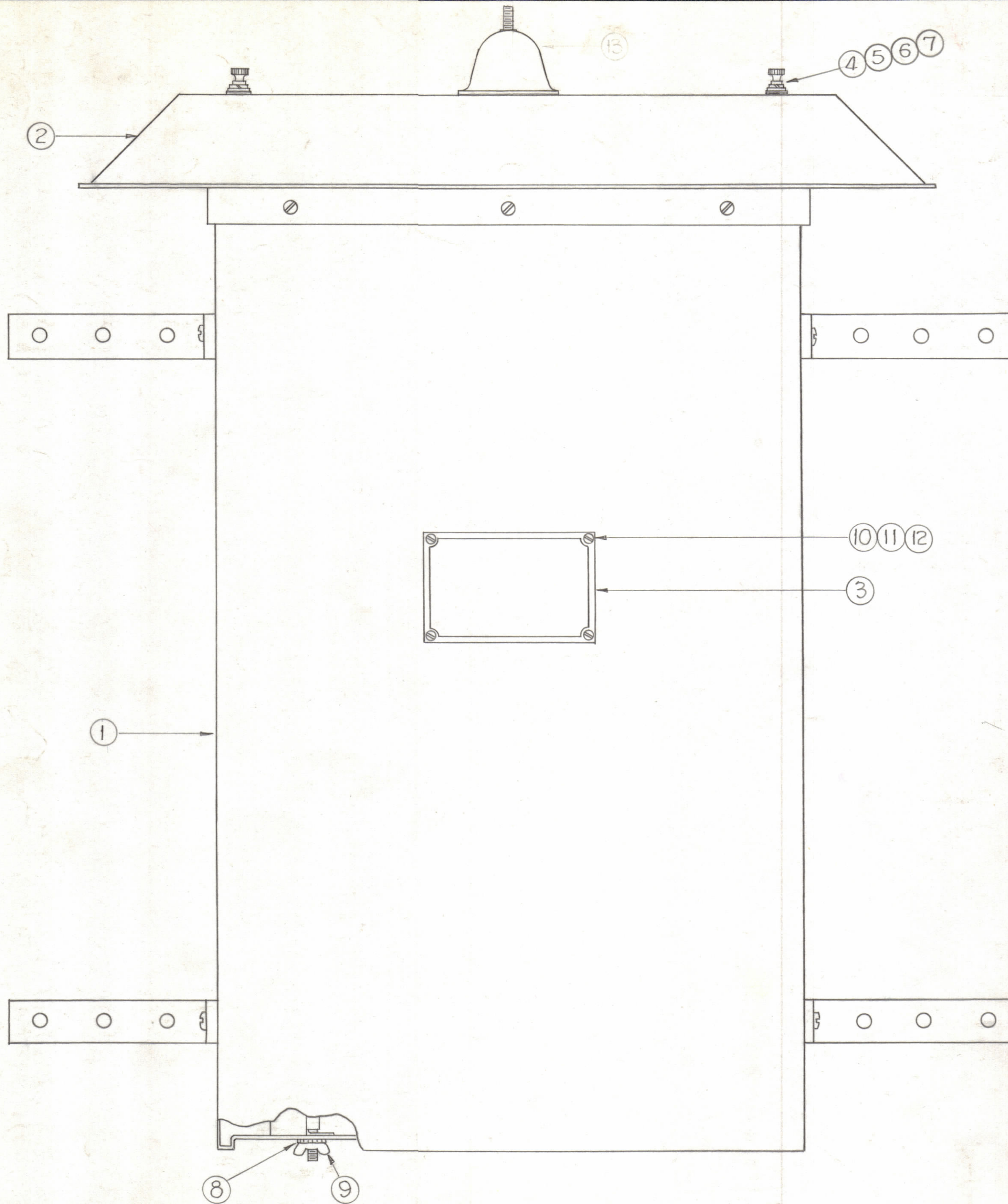


NOTICE TO PERSONS RECEIVING THIS DRAWING

THE TECHNICAL MATERIEL CORPORATION claims proprietary right in the material disclosed hereon. This drawing is issued in confidence for engineering information only and may not be reproduced or used to manufacture anything shown hereon without permission from THE TECHNICAL MATERIEL CORPORATION to the user. This drawing is loaned for mutual assistance and is subject to recall at any time.

Property of:

THE TECHNICAL MATERIEL CORPORATION
MAMARONECK, NEW YORK



REQ. ITEM	PART NO.	DESCRIPTION	SYMBOL
2	13	NS 115	BOWL, INSULATOR
4	12	NTH0256BN6	NUT, HEX
4	11	LWEO2MRN	LOCKWASHER, EXT.
4	10	SCB50256BN4	SCREW, MACHINE
2	9	NT110-2520BN	NUT, WING
2	8	LWE25MRN	LOCKWASHER, EXT.
2	7	GA-137-2	GASKET, NEOPRENE
2	6	FWIOMBN	WASHER, FLAT
2	5	LWSIOMRN	LOCKWASHER, SPLIT
2	4	5G128-1024-8	SCREW, KNURLED HEAD
1	3	NP-176-9	NAMEPLATE
1	2	A-2052	COVER ASS'Y.
1	1	A-1223	CASE ASS'Y.

REQ. ITEM		PART NO.		DESCRIPTION		SYMBOL	
STOCK SIZE				THE TECHNICAL MATERIEL CORP. MAMARONECK, NEW YORK			
MATERIAL				FINAL ASSEMBLY			
DRAWN		CHECKED		FINAL APPROVAL			
TYPE & TEMPER		HEAT TREAT. SPEC.		FINISH & SPEC. NO.		ELEC. DES. APP. MECH. DES. APP. SHEET OF	

SYM	ZONE	DESCRIPTION	DATE	CH. NO.	DRAFTS	CHECKER	ENG. APP.
UNLESS OTHERWISE SPECIFIED:			SCALE				
DIMENSIONS ARE IN INCHES			MAXIMUM ALLOWABLE TOLERANCES HAVE BEEN DETERMINED AND ANY DEVIATIONS WILL BE CAUSE FOR REJECTION. REMOVE ALL BURRS & SHARP EDGES				
TOLERANCES ON FRACTIONS ± 1/64			DECIMALS ± .005		ANGLES ± 1/2°		

REQ. PER UNIT	MODEL	SECTION	ASS'Y. NO.	DATE
1	TER-3500-300			2-8-61