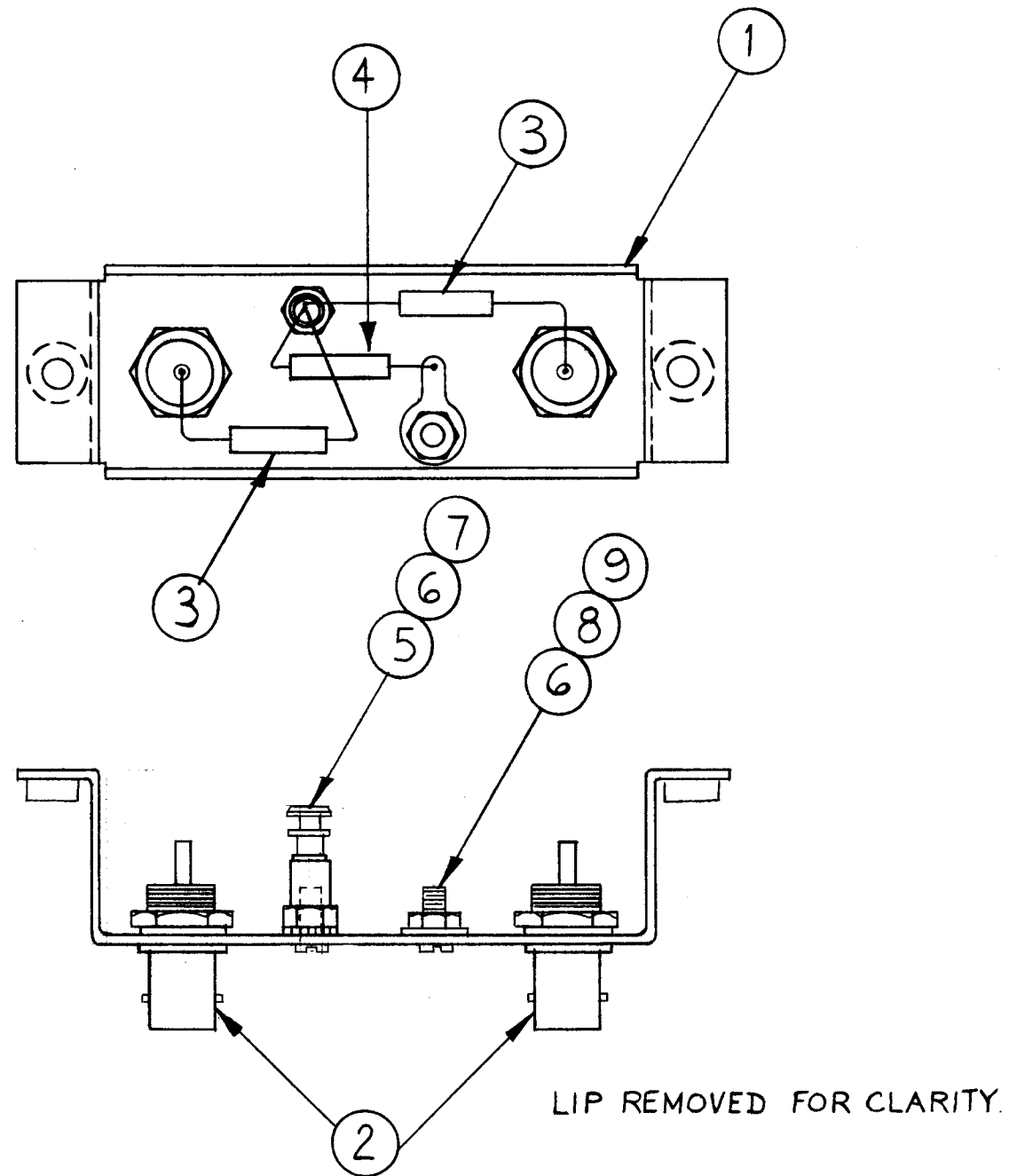


A-2048 C



TMC PART NO.	ITEM 1 NO.	USED ON
A 2048	LD 882/MS1927	RAK-II, RAK-20
A 2048-2	LD 887/MS1927	AX239, AX534, AX575

REQ.	ITEM	PART NO.	DESCRIPTION	SYMBOL
X	10	BS-100	SOLDER, TIN ALLOY	
1	9	NTH0440BN8	NUT, PLAIN, HEX	
1	8	TE-104-1	TERMINAL, LUG	
1	7	LWE04MRN	WASHER, LOCK, EXT.	
2	6	SCBPO440BN3	SCREW, MACHINE	
1	5	TE-102-2	TERMINAL, STUD, INSULATED	
1	4	RC42GF470J	RESISTOR, FIXED, COMP.	
2	3	RC42GF330J	RESISTOR, FIXED, COMP.	
2	2	UG-625*/U	CONNECTOR, RECEPT., BNC	
1	1	SEE CHART	CHASSIS, ATTENUATOR	

SYM	DESCRIPTION	DATE	CH. NO.	DRAFTS	CHECKER	ENG. APP.
C	ON IT. 3 & 4 TOL WERE K, AX575 ADDED	3-16-67	17980			
B	ADD AX534 TO TMC P/N CHART	11/10/66	CC	RME		
A	LETTERING NOTE DELETED TMC P/N CHART ADD., B/M UPDATED	11.18.64	12935	WBS		

LIP REMOVED FOR CLARITY.

REQ. PER UNIT	MODEL	SECTION	ASSY. NO.	DATE
1	RAK-20			12-19-61
1	AX-239			1-23-61
1	RAK-11			1-23-61

REQ.	ITEM	PART NO.	DESCRIPTION	SYMBOL
THE TECHNICAL MATERIEL CORP. MAMARONECK, NEW YORK				
ATTENUATOR ASS'Y.				
10 db				
MATERIAL				
TYPE & TEMPER		HEAT TREAT. SPEC.	DRAWN	CHECKER
			<i>M.A.F.</i>	<i>H.O.C.</i>
FINISH & SPEC. NO.		ELEC. DES. APP.	MECH. DES. APP.	FINAL APPROVAL
				<i>S.F.M.</i>