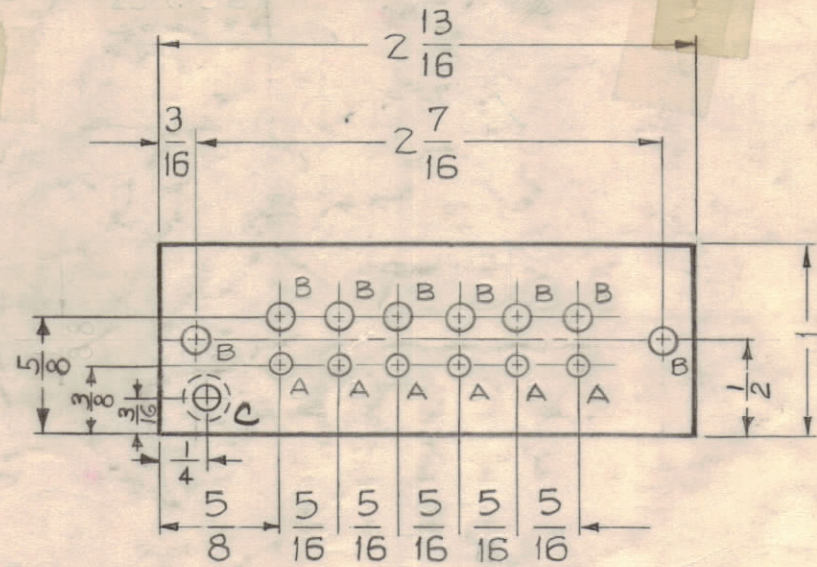
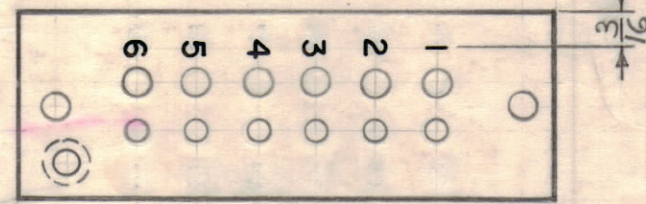


A - NO. 32 DRILL 6 REQ.
 B - NO. 29 DRILL 8 REQ.
 C - DRILL & C'SINK FOR 4-40 F.H.S. 1 REQ.



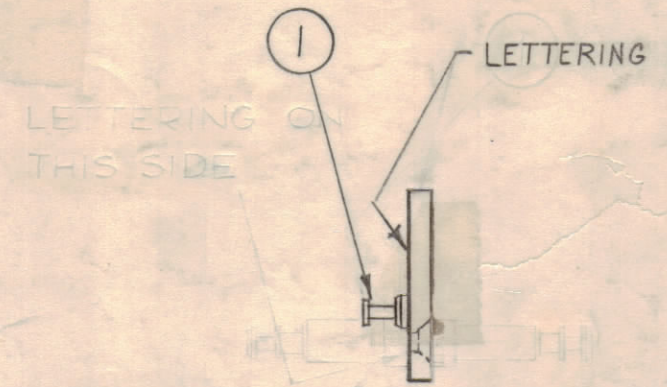
MATERIAL - 1/8" THICK NATURAL PHENOLIC, XXXP

STAGE 1 - MACHINING
(A-2035-1)

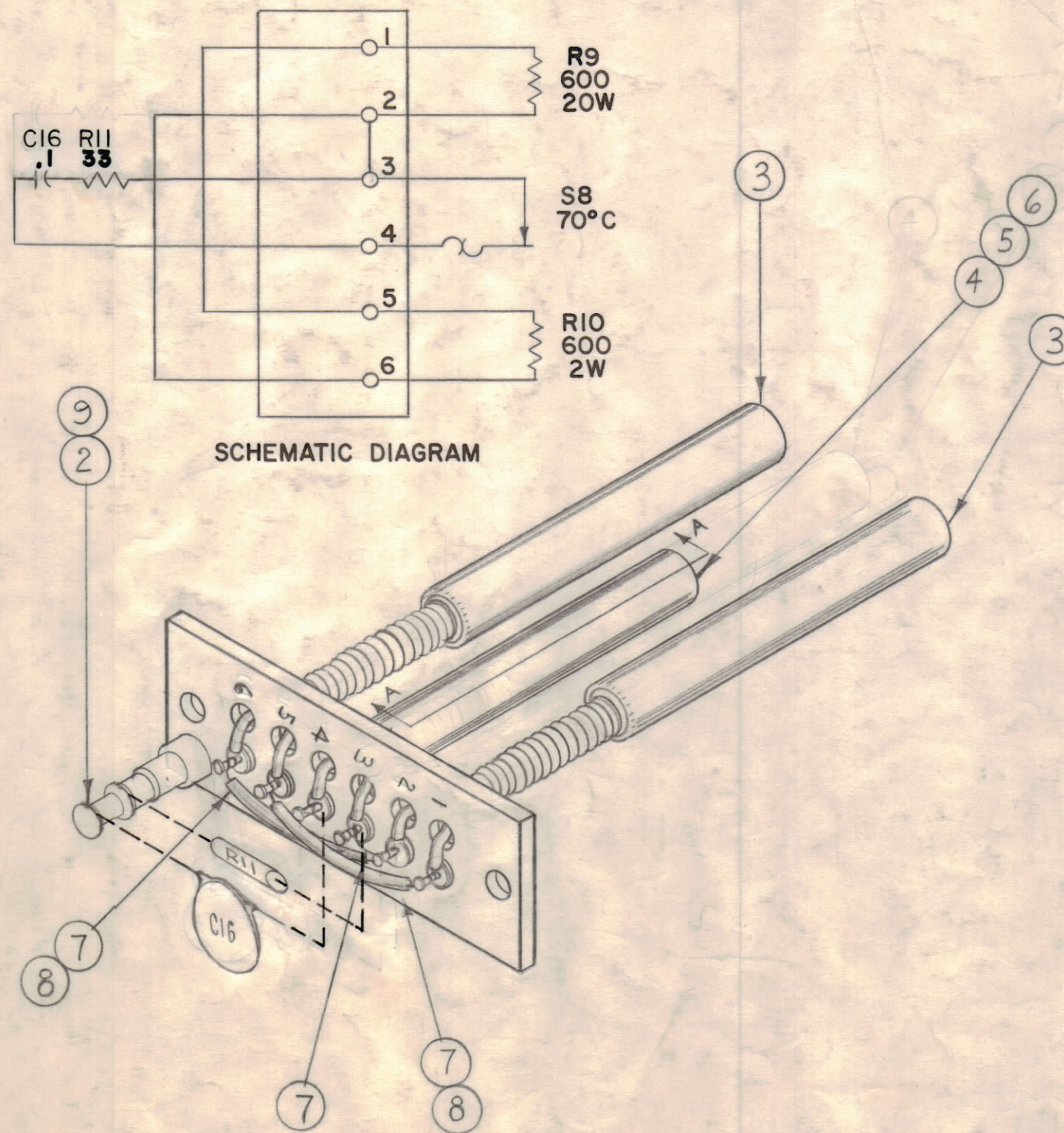


NOTE - ALL LETTERING 1/8" HIGH WHITE GOTHIC
 MARKING PROCESS: AS PER TMC SPECIFICATION S-727

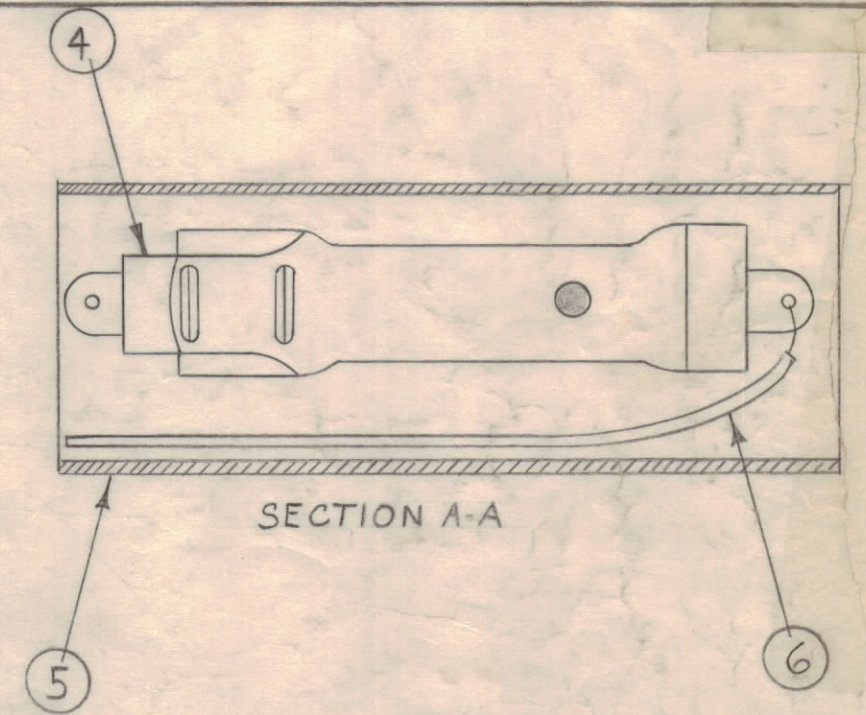
STAGE 2 - LETTERING
(A-2035-2)



STAGE 3 - SUB-ASSEMBLY
(A-2035-3)



STAGE 4 - ELECTRICAL ASS'Y.
(A-2035-4)



REQ. ITEM	PART NO.	DESCRIPTION	SYMBOL
X 12	BS-100	SOLDER, SOFT	
1 11	CC100-32	CAP., FIXED, CERAMIC.	C16
1 10	RC20GF330J	RESISTOR, FIXED	R11
1 9	SCFP0440BN4	SCREW, MACHINE	
2 8	PX-104-5-034	INSULATION, SLEEVING	BROWN
4 7	WL-100-7	WIRE-BUSS-BAR	
6 6	MWC-22(7)-U9	CABLE, INSULATED	WHITE
3 5	PX-104-5-375	INSULATION, SLEEVING	BROWN
1 4	SS-100-2	SWITCH, SENSITIVE	
2 3	RR-102-1	ELEMENT, HEATER	
1 2	TE-102-2	TERMINAL, TURRET	
6 1	TE-105-4	TERMINAL, LUG	

THE TECHNICAL MATERIEL CORP. MAMARONECK, NEW YORK			
STOCK SIZE			
BOARD, TERMINAL ELEMENT			
MATERIAL			
BOARD, TERMINAL ELEMENT			
TYPE & TEMPER			
HEAT TREAT. SPEC.			
FINISH & SPEC. NO.			
MAF	12-7		
DRAWN	ELEC. DES. APP.	MECH. DES. APP.	
CHECKED	FINAL APPROVAL		
A-2035			F

ISSUE ZONE	DESCRIPTION	DATE	CH. NO.	DRAFTS	CHECKER	ENG. APP.
F	AX 242 ASSY DEL. FROM TITLE BLOCK	10-28-60	17147			
E	IT TOWAS RC20GF10K, IT WAS CN113-1, C16 AND UPDATE DESCRIPTION	12/20/65	15279			
D	CLARICAL CHANGE	8-16-65				
C	ON BOM IT WAS PX104-5-038, IT WAS SCF0440BN3 ON STAGE 3 #2 DELETED, ASSY ON STAGE 4	10-26-64	12766			
B	ITEM 11 WAS CN-100-3	4-7-61	4571			
A	Schematic clarified Jumper from term. 2 to 6, was from 3 to 6 R11 lead to term. 3, was to term. 2	1-17-61	3928			

REQ PER UNIT	MODEL	SECTION	ASSY. NO.	DATE
1	TIS-3			12-1-60