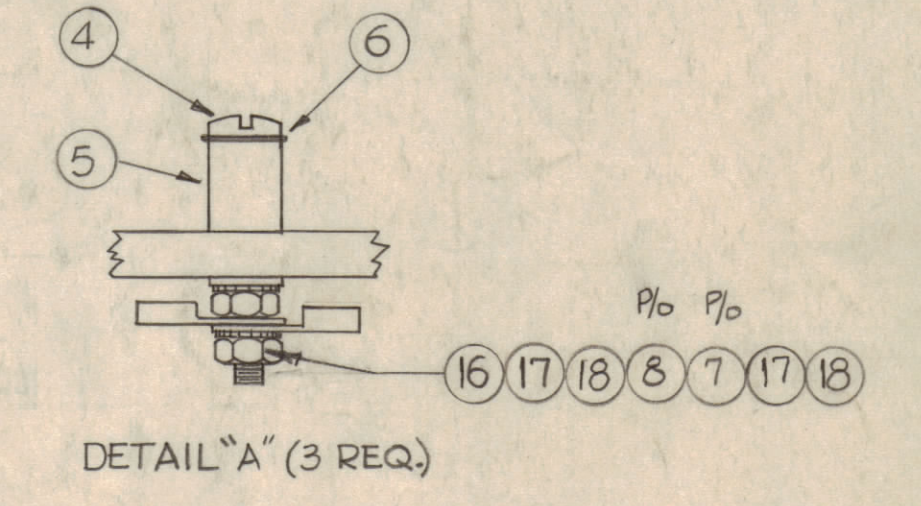
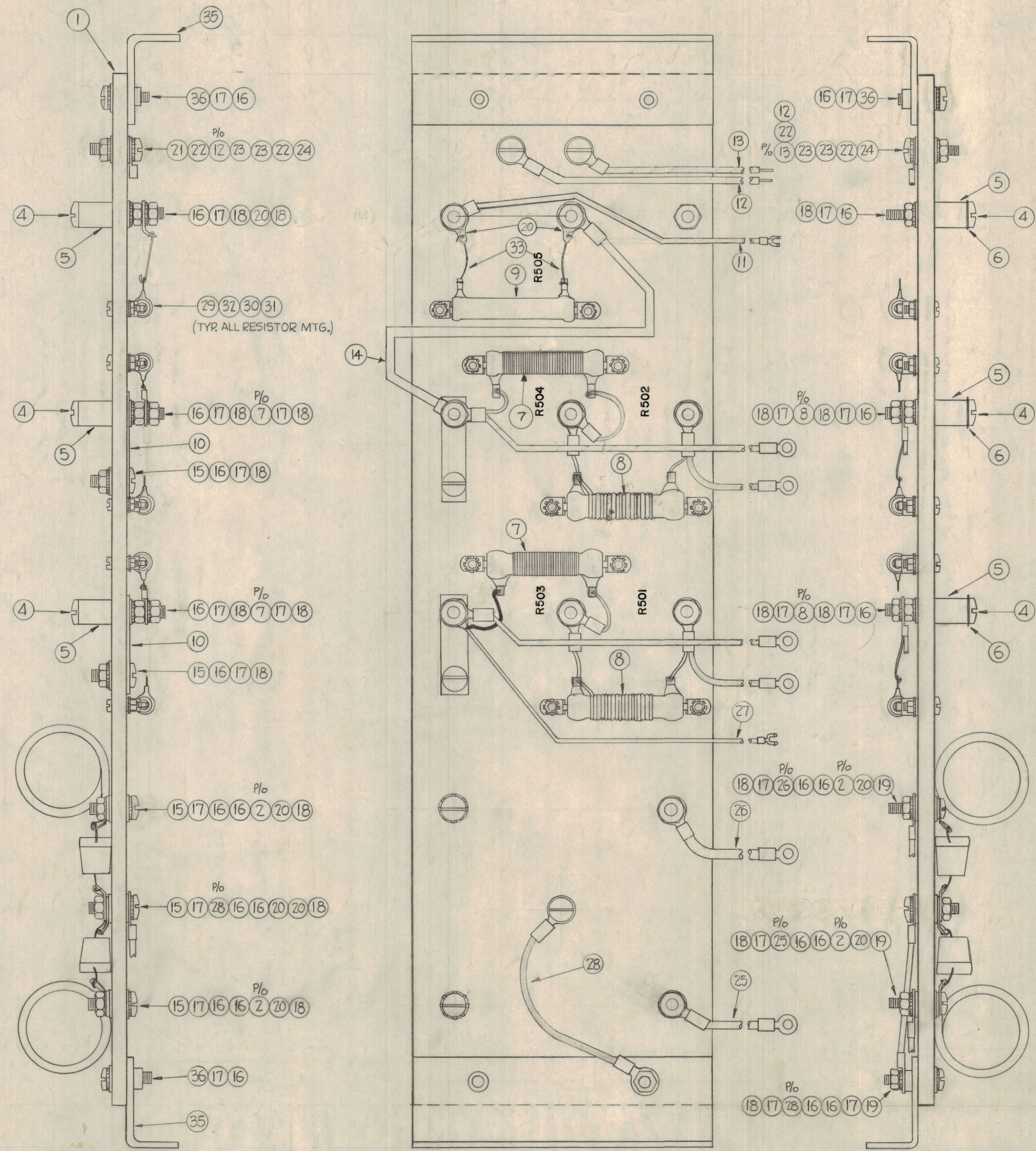
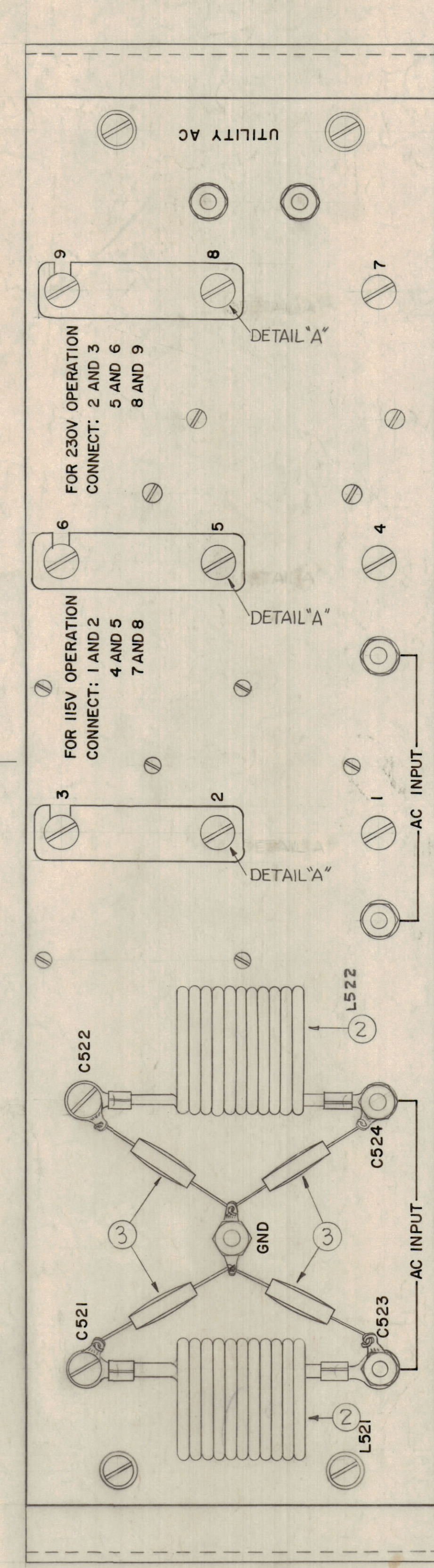


NOTICE TO PERSONS RECEIVING THIS DRAWING

THE TECHNICAL MATERIEL CORPORATION claims proprietary right in the material disclosed herein. This drawing is issued in confidence for engineering information only and may not be reproduced or used to manufacture anything shown hereon without permission from THE TECHNICAL MATERIEL CORPORATION to the user. This drawing is loaned for mutual assistance and is subject to recall at any time.

Property of:  
THE TECHNICAL MATERIEL CORPORATION  
MAMARONECK, NEW YORK



NOTES

LUGS SHOWN ROTATED FOR CLARITY.

ITEMS CALLED OUT IN ORDER OF ASSEMBLY.

REQ.	ITEM	PART NO.	DESCRIPTION	SYMBOL
3	36	SCBP1032BN10	Screw, Machine	
2	35	MS-2488	Bracket, Mtg.	
	34	DELETED		
X	33	WL-100-4	Wing, Buss	
10	32	FW04HBN	Washer, Flat	
10	31	NTH0440BN6	Nut, Hex.	
10	30	LWE04MRN	Lockwasher, Ext.	
10	29	SCBP0440BN7	Screw, Machine	
1	28	CA-409-46-3.50	Cable, Assy JUMPER	Blk
1	27	-48-5.50		Wh.
1	26	-49-6.00		Wh/Blk
1	25	CA-409-50-6.00	Cable, Assy JUMPER	wh.
2	24	NTH0832BN10	Nut, Hex.	
4	23	FW08HBN	Washer, Flat	
4	22	LWE08MRN	Lockwasher, Ext.	
2	21	SCBP0832BN16	Screw, Machine	
8	20	TE-104-4	Lug, Solder	
3	19	SCBP1032BN14	Screw, Machine	
25	18	NTH1032BN12	Nut, Hex.	
27	17	LWE10MRN	Lockwasher, Ext.	
26	16	FW10HBN	Washer, Flat	
5	15	SCBP1032BN16	Screw, Machine	
1	14	CA-409-192-4.00	Cable Assy. Jumper	Wh/Blk
1	13	-51-6.00		Wh.
1	12	-52-6.00		Wh/Blk
1	11	CA-409-191-10.50	Cable Assy Jumper	Wh/Blk
2	10	MS-2487	Buss-Bar Fixed	
1	9	RW-109-32	Resistor, Fixed (5K, 10W)	R505
2	8	AR-132	Shunt Assy, Power Input	R501 R502
2	7	AR-133	" " " "	R503
3	6	MS-2486	Buss-Bar, Switching	R504
9	5	PM-677	Terminal, bushing Type	
9	4	SCBP1032BN6	Screw, Machine	
4	3	CM35F103F03	Capacitor, Fixed, Mica	C521, C522 C523, C524
2	2	CL-269	Choke, RF	L521 L522
1	1	PX-600 (LD-877)	Board, Mtg.	

SYM	ZONE	DESCRIPTION	DATE	CH. NO.	DRAFTS	CHECKER	ENG. APP.
D	EC	IT 7 PICT CLARIFIED, IT 3, 11, 14 CLARIFIED	11-14-66	17254	W40		
C	F5, F6	IT-141 DELETED, ITEM A 15, 10, 21, 20 36 CLARIFIED IT 17 WAS 20 REQ'D, IT 20 WAS 6 REQ'D	3-7-66	15904	W40		
B	F4, 6	IT 14 & 11 DELOCATED, IT 11 WAS CM & 01-47-850	8-9-61	14634	GDL		
A	DE-85	R501 WAS R504 R502 WAS R502	7-3-61	5168	GDL		

UNLESS OTHERWISE SPECIFIED:  
DIMENSIONS ARE IN INCHES  
TOLERANCES ON FRACTIONS ± 1/64 DECIMALS ± .005 ANGLES ± 1/2°

SCALE  
MAXIMUM ALLOWABLE TOLERANCES HAVE BEEN DETERMINED AND ANY DEVIATIONS WILL BE CAUSE FOR REJECTION. REMOVE ALL BURRS & SHARP EDGES

REQ. PER UNIT	MODEL	SECTION	ASS'Y. NO.	DATE
1	APP-4			3-21-61

USED ON

REG.	ITEM	PART NO.	DESCRIPTION	SYMBOL
THE TECHNICAL MATERIEL CORP. MAMARONECK, NEW YORK				
POWER INPUT TERMINAL BOARD ASSEMBLY				
DRAWN			CHECKED	FINAL APPROVAL
TYPE & TEMPER			HEAT TREAT. SPEC.	
FINISH & SPEC. NO.			ELEC. DES. APP.	MECH. DES. APP.
SHEET			OF	

A-2032

A

DEFIANCE NO. 1030 34912