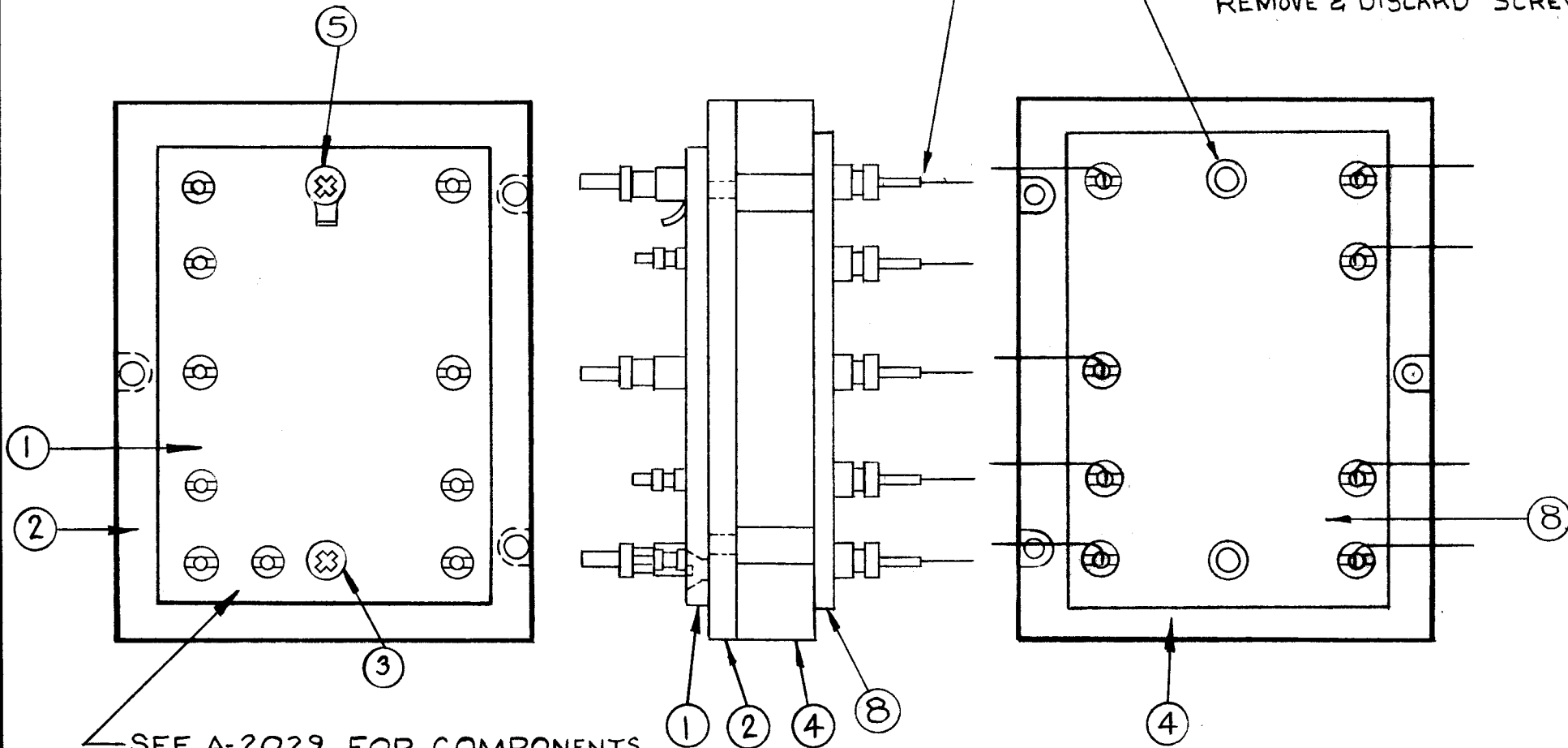


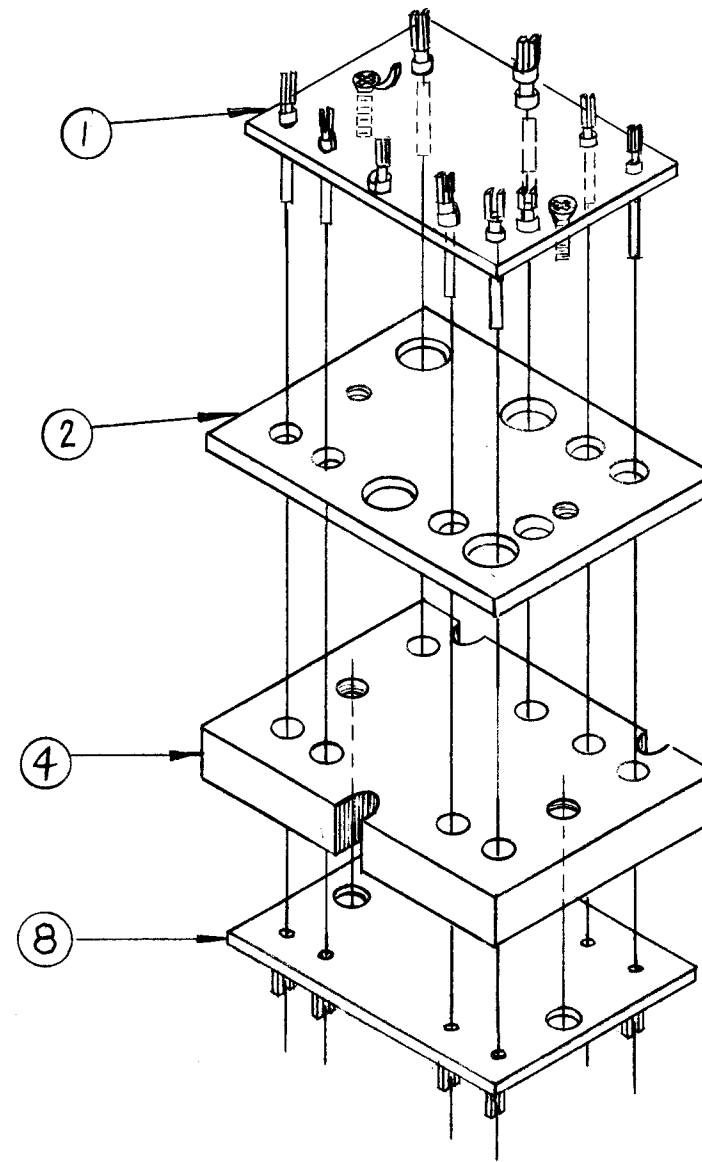
A-2030 A

NOTE:  
PULL WIRES TIGHT THEN  
CUT & SOLDER (ITEM 7)

POSITION BOARD WITH TWO  
SCREWS (SCFP0632BN4) UNTIL  
WIRES ARE SOLDERED. THEN  
REMOVE & DISCARD SCREWS.



SEE A-2029 FOR COMPONENTS  
AND WIRING ASS'Y OF BOARD



-WIRING-

1	8	A2031	TERM. BOARD ASSY, BOTTOM	
X	7	BS100	SOLDER, TIN ALLOY	
#	6	DELETED	<del>—————</del>	<del>—————</del>
1	5	SCBP0632BN7	SCREW MACH.	
1	4	IM-107	200KC OVEN INSULATOR	
1	3	SCFP0632BN7	SCREW MACH.	
1	2	MS-209	200KC OVEN PLATE	
1	1	A-2029	TERM. BD COMP ASS'Y	200KC
REQ.	ITEM	PART NO.	DESCRIPTION	SYMBOL
—————			THE TECHNICAL MATERIEL CORP.	
—————			MAMARONECK, NEW YORK	
—————			TERM. BD, INSULATOR	
—————			& PLATE SUB-ASS'Y	
—————			RUZZO	BP
TYPE & TEMPER		HEAT TREAT. SPEC.	DRAWN	CHECKER
—————		—————	—————	—————
FINISH & SPEC. NO.			ELEC. DES. APP.	MECH. DES. APP.
—————			A-2030	A

A	ON B/M IT. 6 "DELETED. IT. 7" ADDED. IT. 3 WAS "SCFS..." IT. 5 WAS "SCBS063BN8" ON PICT. "NOTES" & IT. 8 "ADDED."	10-26-64	12766	9.2	<i>[Signature]</i>	<i>[Signature]</i>
SYM	DESCRIPTION	DATE	CH. NO.	DRAFTS	CHECKER	ENG. APP.
UNLESS OTHERWISE SPECIFIED: DIMENSIONS ARE IN INCHES TOLERANCES ON FRACTIONS ± 1/64 DECIMALS ± .005 ANGLES ± 1/2°		SCALE: MAXIMUM ALLOWABLE TOLERANCES HAVE BEEN DETERMINED AND ANY DEVIATIONS WILL BE CAUSE FOR REJECTION. REMOVE ALL BURRS AND SHARP EDGES				
		TIS-3		11-29-60		
		REQ. PER UNIT	MODEL	SECTION	ASS'Y. NO.	DATE
		USED ON				