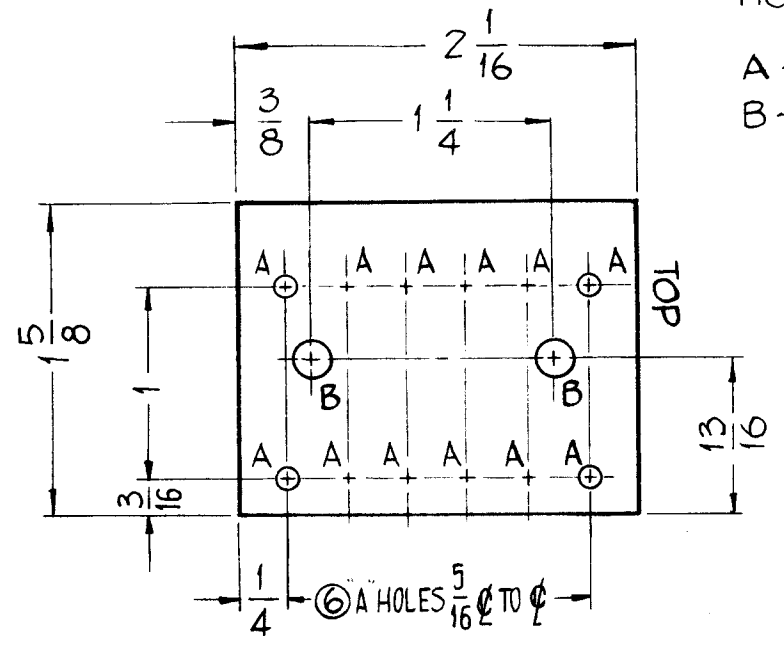
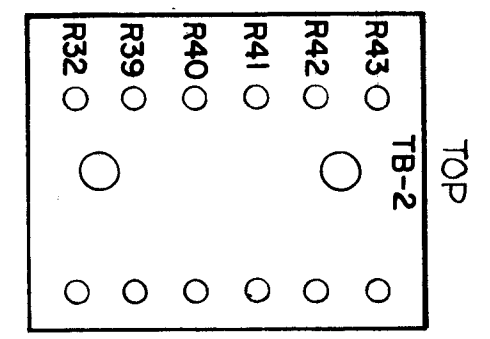


A-2022 A



HOLES ~
 A ~ .116 DIA. 12 REQ.
 B ~ .189 DIA. 2 REQ.

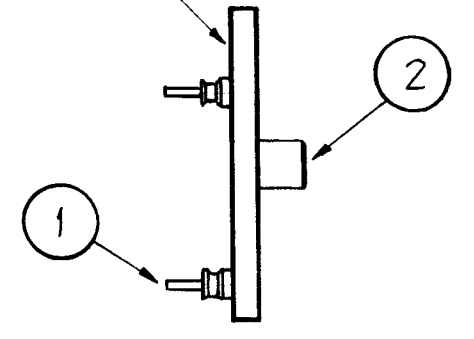
STAGE ~ 1, MACHINING (A-2022-1)
 MATERIAL ~ 1/8 THICK, XXXP PHENOLIC, FINISH ~ NATURAL



MARKING PROCESS: AS PER TMC SPECIFICATION S-727
 ALL STAMPING 1/8" HIGH, BLACK GOTHIC.

STAGE ~ 2, STAMPING
 (A-2022-2)

STAMP ON THIS SURFACE



STAGE ~ 3, SUB-ASS'Y
 (A-2022-3)

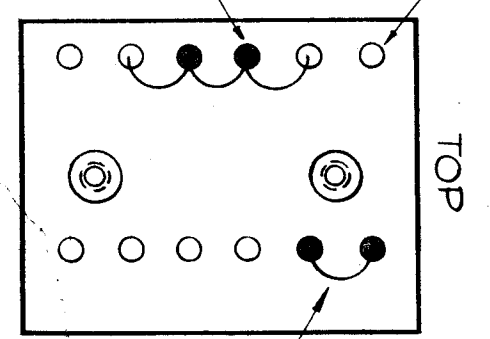
NOTICE TO PERSONS RECEIVING THIS DRAWING

THE TECHNICAL MATERIEL CORPORATION claims proprietary right in the material disclosed herein. This drawing is issued in confidence for engineering information only and may not be reproduced or used to manufacture anything shown herein without permission from THE TECHNICAL MATERIEL CORPORATION to the user. This drawing is loaned for mutual assistance and is subject to recall at any time.

Property of:
 THE TECHNICAL MATERIEL CORPORATION
 MAMARONECK, NEW YORK

● = SOLDER CONNECTION

○ = NO SOLDER



BOTTOM VIEW SHOWN

3

STAGE ~ 4, FINAL ASSEMBLY
 (A-2022-4) &
 (A-2022-5)

NOTES:

- USE APPROPRIATE M/L FOR ELECT COMPONENT P/N NPL A2022-4 (TIS-3) NPL A2022-5 (TIS-3D)
- USE SYMBOL NO'S FOR ASS'Y REF

X	9	BS100	SOLDER, SOFT	
2	8	SEE NOTES	RESISTOR, WIRE WOUND, FIXED	R42, R43
1	7	↑ ↑	RESISTOR, FIXED COMPOSITION	R41
1	6	↑ ↓		R39
1	5	↓ ↓		R32
1	4	SEE NOTES	RESISTOR, FIXED COMPOSITION	R40
X	3	WL-100-7	WIRE, BUSS, SIZE 22	
2	2	TE 108-3	STANDOFF, RIVET TYPE	
12	1	TE 109-3	SPLIT, TERMINAL LUG	

REQ.	ITEM	PART NO.	DESCRIPTION	SYMBOL
THE TECHNICAL MATERIEL CORP. MAMARONECK, NEW YORK				
ASS'Y, TERMINAL BOARD NO. 2				
MATERIAL				
			J.C. Biele	DB
TYPE & TEMPER		HEAT TREAT. SPEC.	DRAWN	CHECKER
			PT	
FINISH & SPEC. NO.			ELEC. DES. APP.	MECH. DES. APP.

A	REV. & UPDATED	4.22.68	18885	HS	FB	AW
SYM	DESCRIPTION	DATE	CH. NO.	DRAFTS	CHECKER	ENG. APP.
UNLESS OTHERWISE SPECIFIED:						
DIMENSIONS ARE IN INCHES						
TOLERANCES ON FRACTIONS ± 1/64 DECIMALS ± .005 ANGLES ± 1/20						
SCALE: FULL, DO NOT SCALE						
MAXIMUM ALLOWABLE TOLERANCES HAVE BEEN DETERMINED AND ANY DEVIATIONS WILL BE CAUSE FOR REJECTION. REMOVE ALL BURRS AND SHARP EDGES						
1	TIS-3D					4.22.68
1	TIS-3					11-21-60
REQ. PER UNIT	MODEL	SECTION	ASS'Y. NO.	DATE		
				USED ON		