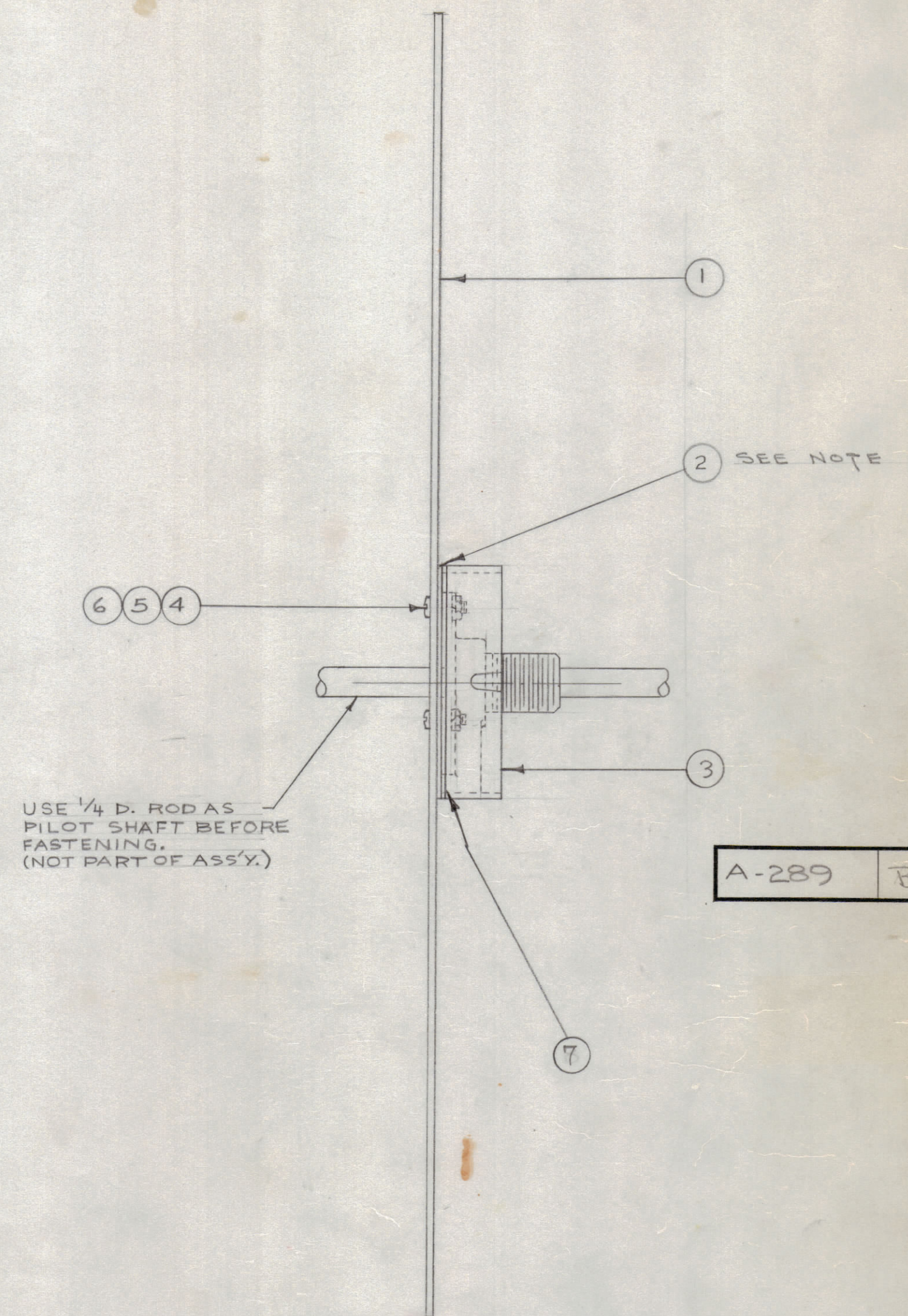
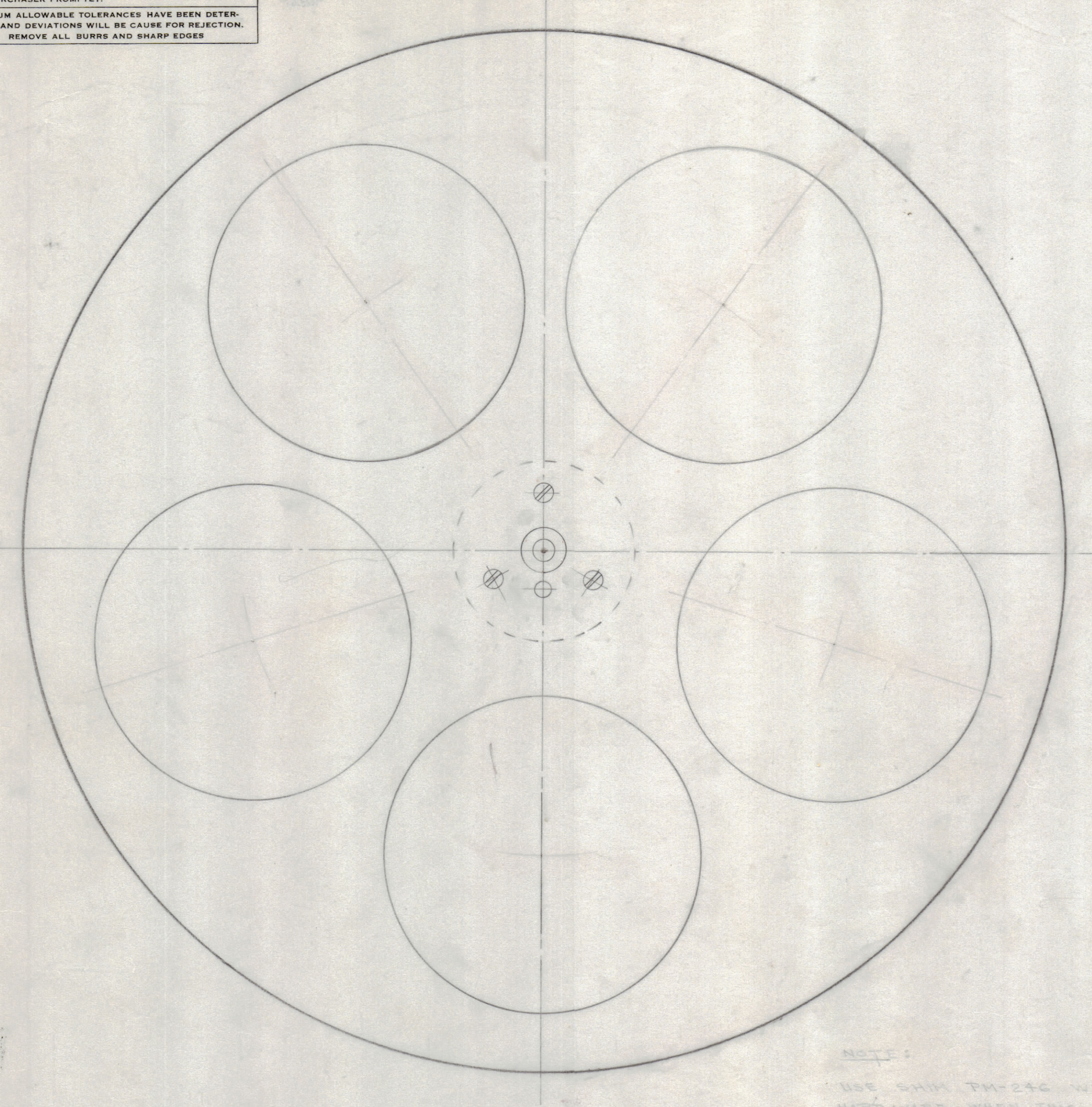


IF IT IS FOUND DESIRABLE TO CHANGE ANY TOLERANCE OR OTHER DETAIL SPECIFIED ON THIS DRAWING NOTIFY THE PURCHASER PROMPTLY.

MAXIMUM ALLOWABLE TOLERANCES HAVE BEEN DETERMINED AND DEVIATIONS WILL BE CAUSE FOR REJECTION. REMOVE ALL BURRS AND SHARP EDGES

RELEASED



USE 1/4 D. ROD AS PILOT SHAFT BEFORE FASTENING. (NOT PART OF ASS'Y.)

A-289 B

NOTE:
USE SHIM PM-246 WITH SUPPLIED HARDWARE WHEN THIS WHEEL IS USED FOR "NO X" DE TAPE

NOTICE TO PERSONS RECEIVING THIS DRAWING

THE TECHNICAL MATERIEL CORPORATION claims proprietary right in the material disclosed hereon. This drawing is issued in confidence for engineering information only and may not be reproduced or used to manufacture anything shown hereon without permission from THE TECHNICAL MATERIEL CORPORATION to the user. This drawing is loaned for mutual assistance and is subject to recall at any time.

Property of:
THE TECHNICAL MATERIEL CORPORATION
MAMARONECK, NEW YORK

1	7	PM-246	SHIM (3/16" Thick)	
3	6	NTH0440BC6	NUT, HEX.	
3	5	LWS04LRC	LOCKWASHER, SPLIT	
3	4	SCBS0440BC9	SCREW, MACHINE	
1	3	A-287	CLUTCH ASS'Y.	
1	2	PM-178	SHIM (.025" Thick)	
1	1	PM-176	REEL SIDE-8" OR 10" OR 11 1/2"	
REQ. ITEM	PART NO.		DESCRIPTION	SYMBOL
---			THE TECHNICAL MATERIEL CORP.	
---			MAMARONECK, NEW YORK	
---			DRIVE WHEEL ASS'Y.	
---			8" OR 10" OR 11 1/2"	
---			16 12-4-52	
---			DRAWN	
---			ELEC. DES. APP.	
---			MECH. DES. APP.	
---			CHECKED	
---			FINAL APPROVAL	
---			A-289 B	
---			FINISH & SPEC. NO.	

B	2	NOTE DELETED ITEM 7 ADD 7/10/52	2	JAD	CSB	4/2	
A	1	NOTE ADDED	7/13/52	1	JAD	CSB	
ISSUE	ITEM	CHANGED FROM	DATE	CN. NO.	DRAFTS	CHECKER	ENG. APP.
TOLERANCES			SCALE: ---				
ALL OTHERS	DEC. DIM. ± FRAC. DIM. ± ANGULAR DIM. ±		DRILL, PUNCH, COMMERCIAL STOCK SIZES AND MANUFACTURERS TOLERANCES ARE NOT INCLUDED.				

R-12	168	A-290	12-4-52
R-10	168	A-290	12-4-52
R-8	168	A-290	12-4-52
MODEL	PROJECT NO.	ASS'Y. NO.	DATE
USED ON			