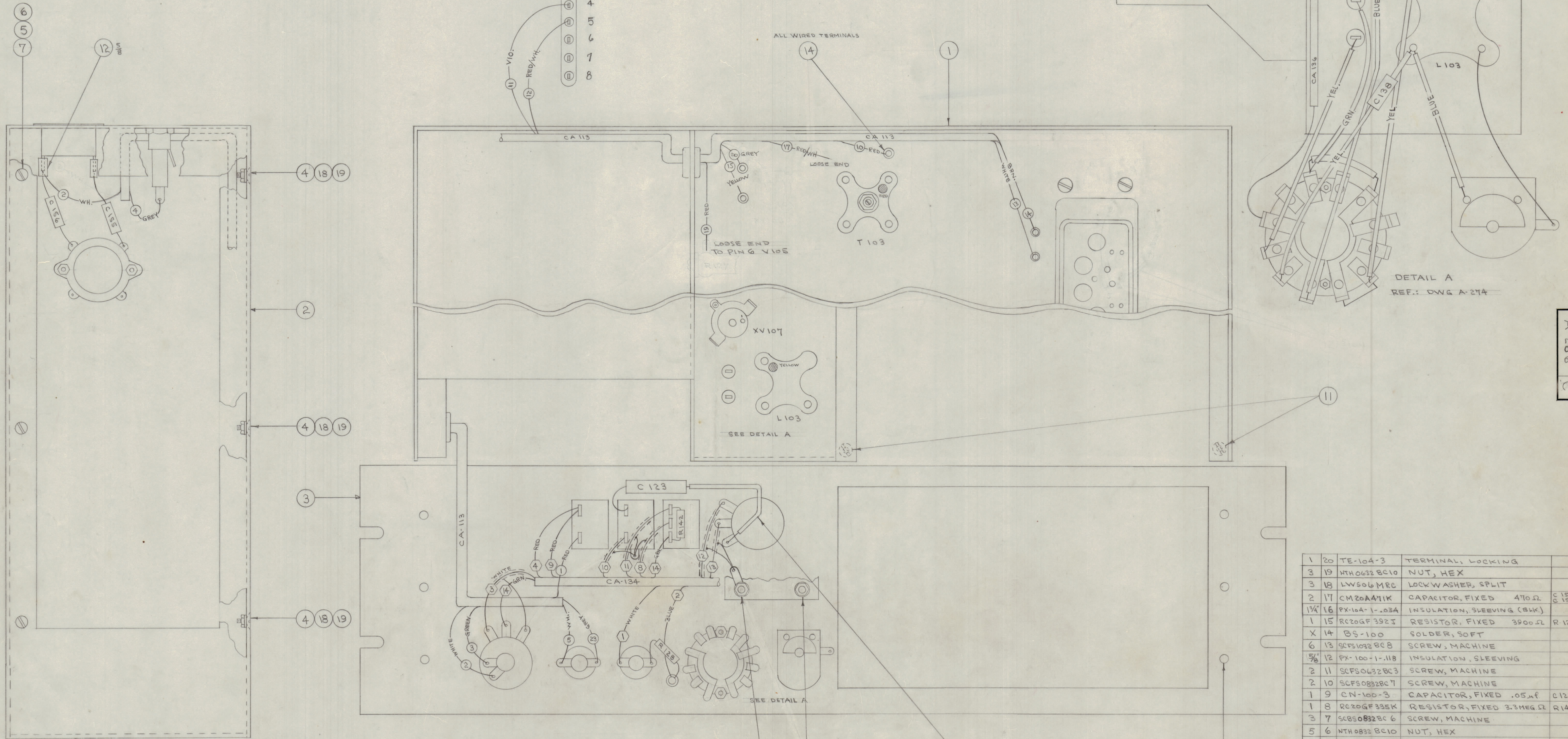


IF IT IS FOUND DESIRABLE TO CHANGE ANY TOLERANCE OR OTHER DETAIL SPECIFIED ON THIS DRAWING NOTIFY THE PURCHASER PROMPTLY.  
 MAXIMUM ALLOWABLE TOLERANCES HAVE BEEN DETERMINED AND DEVIATIONS WILL BE CAUSE FOR REJECTION. REMOVE ALL BURRS AND SHARP EDGES.

RELEASED

E102



1	20	TE-104-3	TERMINAL, LOCKING	
3	19	HTH0632 BC10	NUT, HEX	
3	18	LWS06 MRC	LOCKWASHER, SPLIT	
2	17	CM20A471K	CAPACITOR, FIXED 470Ω	C 155 C 156
1/4	16	PX-104-1-.034	INSULATION, SLEEVING (BLK)	
1	15	RC20GF 392J	RESISTOR, FIXED 3900Ω	R 128
X	14	BS-100	SOLDER, SOFT	
6	13	SCFS1032 BC8	SCREW, MACHINE	
5/8	12	PX-100-1-.118	INSULATION, SLEEVING	
2	11	SCFS0632 BC3	SCREW, MACHINE	
2	10	SCFS0832 BC7	SCREW, MACHINE	
1	9	CN-100-3	CAPACITOR, FIXED .05μf	C 123
1	8	RC20GF 335K	RESISTOR, FIXED 3.3MEGΩ	R 142
3	7	SCBS0832 BC 6	SCREW, MACHINE	
5	6	NTH0832 BC10	NUT, HEX	
4	5	LWS08 MRC	LOCKWASHER, SPLIT	
3	4	SCFS0632 BC5	SCREW, MACHINE	
1	3	A-226	FRONT PANEL MECH. ASSY.	
1	2	A-122 (FFR-2) A-121 (FFR-2)	POWER SUPPLY ASSY.	
1	1	A-285	CENTER CHASSIS + CHASSIS FRAME ASSY.	

THIS DRAWING SHOWS ONLY THAT HARDWARE AND THOSE COMPONENTS NECESSARY TO SHOW CONNECTIONS (EITHER MECHANICAL OR ELECTRICAL), WHERE NECESSARY TO SHOW DETAIL, LIPS HAVE BEEN OMITTED. NOTE THAT FRONT PANEL AND E102 HAVE BEEN LAYED FLAT TO SHOW WIRING CONNECTIONS MORE CLEARLY.  
 WIRE NO'S. ON THIS DWG. CORRESPOND TO ITEM NO'S ON CA-134  
 WIRE NO'S. ON THIS DWG. CORRESPOND TO ITEM NO'S ON CA-113 AND 1D-102

ITEMS 10 AND 13 MUST BE PAINTED. (S-115, SMOOTH GREY ENAMEL).  
 FRONT PANEL WIRE CONNECTIONS SHOULD BE MADE BEFORE IT IS ASSEMBLED TO THE CHASSIS, 'DETAIL A' AFTER ASSEMBLY.

NOTICE TO PERSONS RECEIVING THIS DRAWING

THE TECHNICAL MATERIEL CORPORATION claims proprietary right in the material disclosed hereon. This drawing is issued in confidence for engineering information only and may not be reproduced or used to manufacture anything shown hereon without permission from THE TECHNICAL MATERIEL CORPORATION to the user. This drawing is loaned for mutual assistance and is subject to recall at any time.

Property of:  
 THE TECHNICAL MATERIEL CORPORATION  
 MAMARONECK, NEW YORK

C	1	MODIFIED FOR FFR-2	YH/SH	3	0650	M.H.S.	AM
B	1	ITEM 18 ADDED	YH/SH	2	0702	N.D.	AM
A	1	ITEM 17 ADDED	YH/SH	1	0706	AM	AM

ISSUE ITEM CHANGED FROM DATE CN. NO. DRAFTS CHECKER ENG. APP.

TOLERANCES:  
 ALL OTHERS DEC. DIM. ±  
 FRAC. DIM. ±  
 ANGULAR DIM. ±

DRILL, PUNCH, COMMERCIAL STOCK SIZES AND MANUFACTURERS TOLERANCES ARE NOT INCLUDED.

FFR-2	104	A-122	12-1-52
MODEL	PROJECT NO.	ASSY. NO.	DATE
USED ON			

REQ. ITEM	PART NO.	DESCRIPTION	SYMBOL
THE TECHNICAL MATERIEL CORP. MAMARONECK, NEW YORK			
CHASSIS & FRONT PANEL ASSY.			
STOCK SIZE			
MATERIAL		WEIGHT PER PC.	
TYPE & TEMPER		CDD 12-452 G.T.O. P.M.	
HEAT TREAT. SPEC.		DRAWN ELEC. DES. APP. MECH. DES. APP.	
		CHECKED SUPERCEDES FINAL APPROVAL	
		FFR A-286 C	