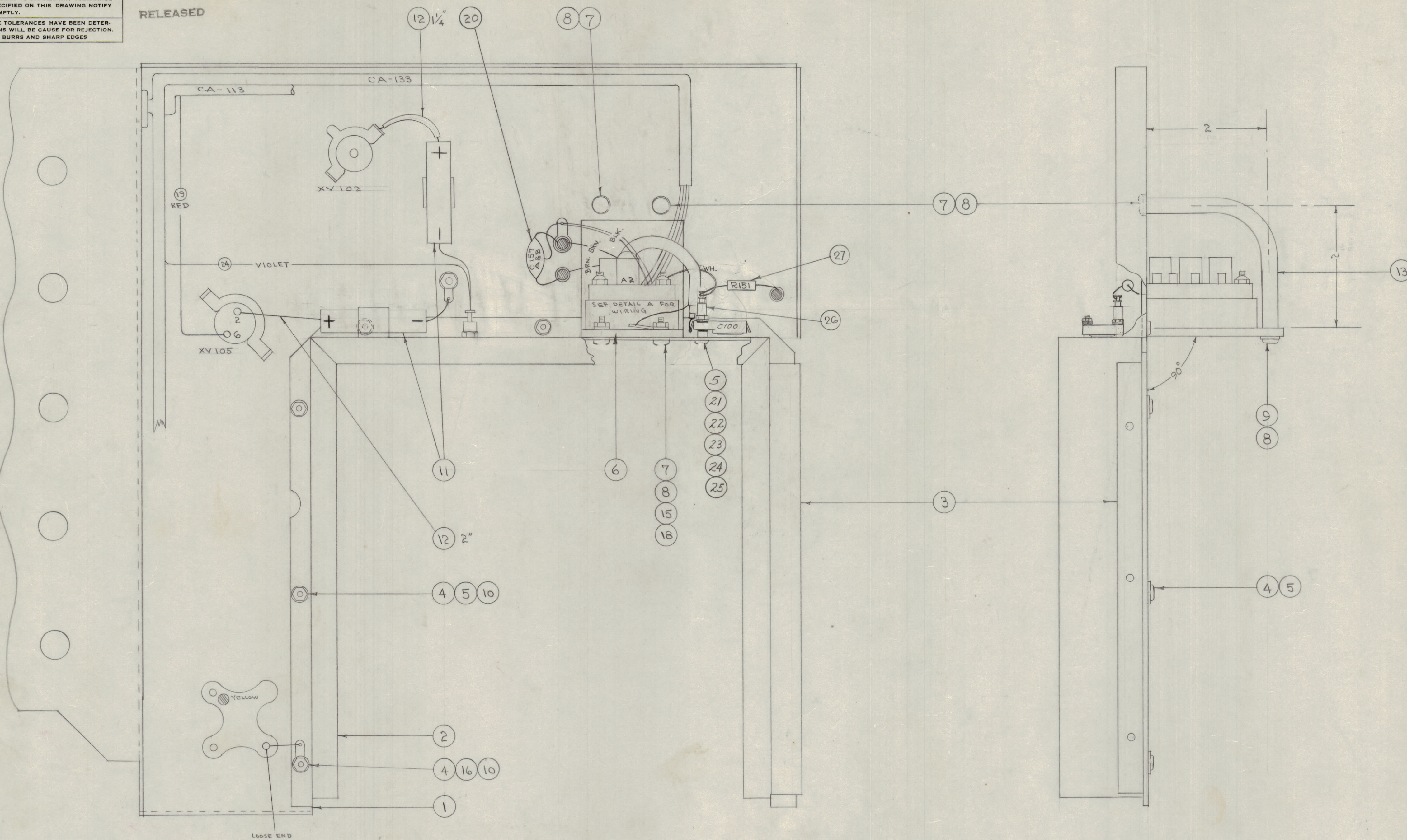


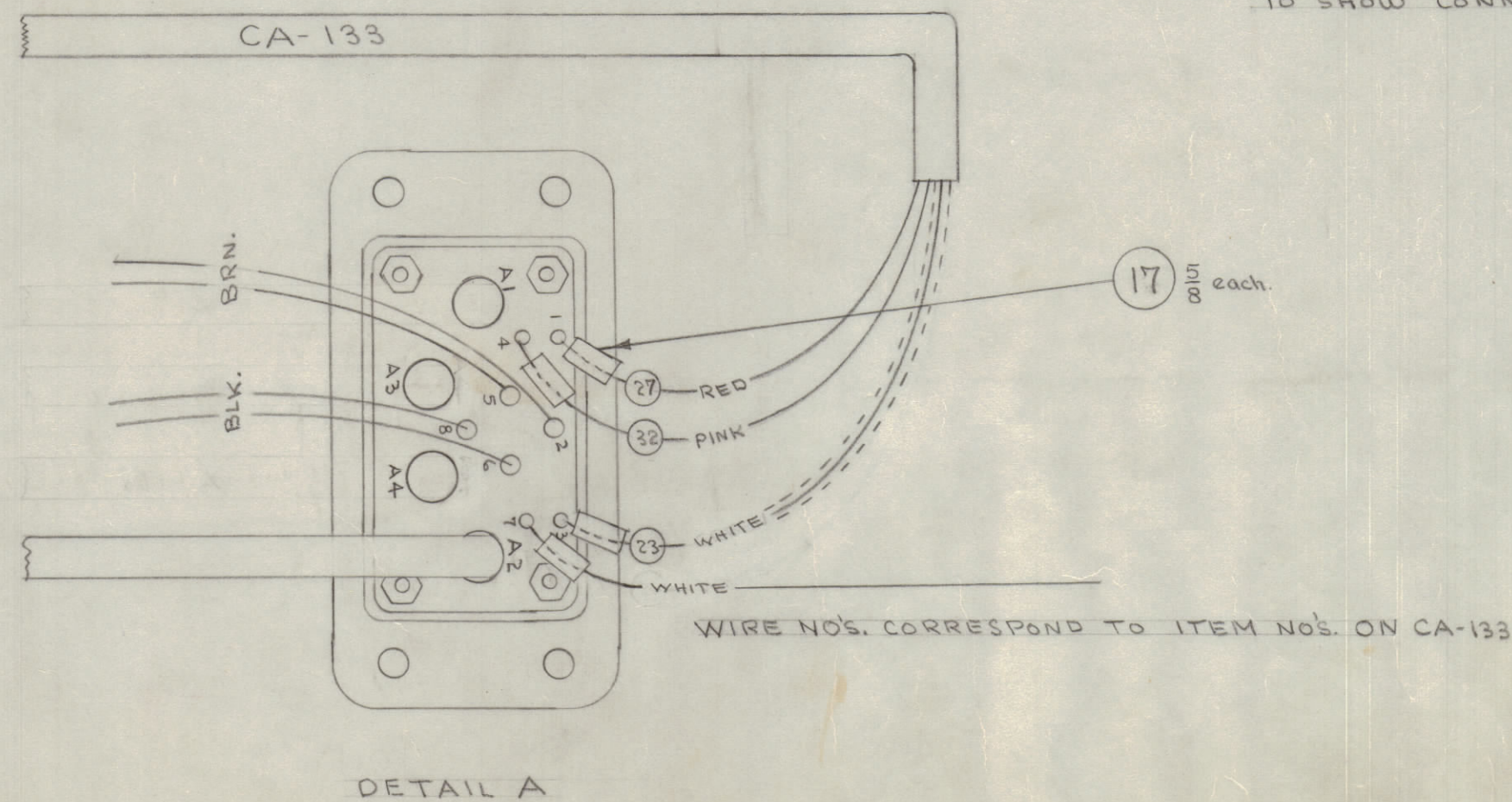
IF IT IS FOUND DESIRABLE TO CHANGE ANY TOLERANCE OR OTHER DETAIL SPECIFIED ON THIS DRAWING NOTIFY THE PURCHASER PROMPTLY.  
 MAXIMUM ALLOWABLE TOLERANCES HAVE BEEN DETERMINED AND DEVIATIONS WILL BE CAUSE FOR REJECTION. REMOVE ALL BURRS AND SHARP EDGES.

RELEASED



THIS DRAWING SHOWS ONLY THAT HARDWARE NECESSARY TO CONNECT JT-104 (BACK) TO A-158 (PAN), AND A-158 (PAN) TO A-274 (COMPONENTS). ONLY THOSE COMPONENT NECESSARY TO SHOW CONNECTIONS BETWEEN THE THREE PARTS.

NOTE POLARITY OF ITEM 11



ISSUE	ITEM	CHANGED FROM	DATE	CN. NO.	DRAFTS	CHECKER	ENG. APP.
G	1	ITEM 11 DESCRIPTION WIRING	2/21/53	24	63	2/21	2/21
F	1	ITEM 11 DESCRIPTION WIRING	2/21/53	24	63	2/21	2/21
E	1	ADDED ITEM 21, WIRE LOCATED BY 64A-255, 8 ITEMS 22, 23, 24, 25, ITEM 5 QUANT. WASHES	2/21/53	24	63	2/21	2/21
D	1	PLW 6-XVIO'S LEAD ADDED	2/21/53	24	63	2/21	2/21
C	2	WIRING CHANGED	5/14/53	3	C.D.D.	W.S.D.	W.S.D.
B	2	ITEM 18 REPLACED	3/6/53	2	C.D.D.	W.S.D.	W.S.D.
A	1	ITEMS 18, 19 & 20 ADDED	1/14/53	1	C.D.D.	W.S.D.	W.S.D.

TOLERANCES	SCALE:
ALL OTHERS	DEC. DIM. ± FRAC. DIM. ± ANGULAR DIM. ±
	DRILL PUNCH, COMMERCIAL STOCK SIZES AND MANUFACTURERS TOLERANCES ARE NOT INCLUDED.

NOTICE TO PERSONS RECEIVING THIS DRAWING

THE TECHNICAL MATERIEL CORPORATION claims proprietary right in the material disclosed hereon. This drawing is issued in confidence for engineering information only and may not be reproduced or used to manufacture anything shown hereon without permission from THE TECHNICAL MATERIEL CORPORATION to the user. This drawing is loaned for mutual assistance and is subject to recall at any time.

Property of:

THE TECHNICAL MATERIEL CORPORATION  
 MAMARONECK, NEW YORK

FFR-2	104	A-285	12-21-54
MODEL	PROJECT NO.	ASSY. NO.	DATE
USED ON			

REQ.	ITEM	PART NO.	DESCRIPTION	SYMBOL
1	27	RC20GF104K	RESISTOR, FIXED 100K	R151
1	26	TE-102-2	TERMINAL, TURRET	
2	25	NTH0440BC6	NUT, HEX.	
2	24	TE-117-21	STAND OFF	
4	23	WA-109-17	WASHER, FIBRE	
2	22	SCBS0440BC10	SCREW, MACHINE	
1	21	CV11C300	CAPACITOR, VAR. 4-30 μF	C100
1	20	CC-100-23	CAPACITOR, FIXED 2X.01	C151
-	19		DELETE	
1	18	TE-116-2	LUG, SOLDER	
2 1/2	17	PX-100-1-106	INSULATION, SLEEVING	
1	16	TE-104-1	TERMINAL, LOCKING	
2	15	NTH0632BC8	NUT, HEX.	
X	14	BS-100	SOLDER, SOFT	
2	13	PM-175	BRACE, JACK	
3 1/4	12	PX-104-2-.034	INSULATION, SLEEVING	
2	11	CE-100	CAPACITOR, FIXED	C-126 C-151
6	10	NTH0440BC8	NUT, HEX.	
2	9	SCBS0632BC8	SCREW, MACHINE	
6	8	LWS 06 MRC	LOCKWASHER, SPLIT	
4	7	SCBS0632BC6	SCREW, MACHINE	
1	6	A-277	JACK ASSY.	J-107
11	5	LWS 04 MRC	LOCKWASHER, SPLIT	
9	4	SCBS0440BC4	SCREW, MACHINE	
1	3	PM-160	SIDE BRACE	
1	2	A-158	PAN ASSY.	
1	1	A-274	CENTER CHASSIS COMP. ASSY.	

THE TECHNICAL MATERIEL CORP. MAMARONECK, NEW YORK			
CENTER CHASSIS & PAN ASSEMBLY			
MATERIAL		WEIGHT PER PC.	
TYPE & TEMPER.		C.O.D. 12-1-54	
HEAT TREAT. SPEC.		DRAWN	
FINISH & SPEC. NO.		ELEC. DES. APP. G.T.O.	
SUPERCEDES		MECH. DES. APP.	
FFR		FINAL APPROVAL	
A-275		G	

A-275 G