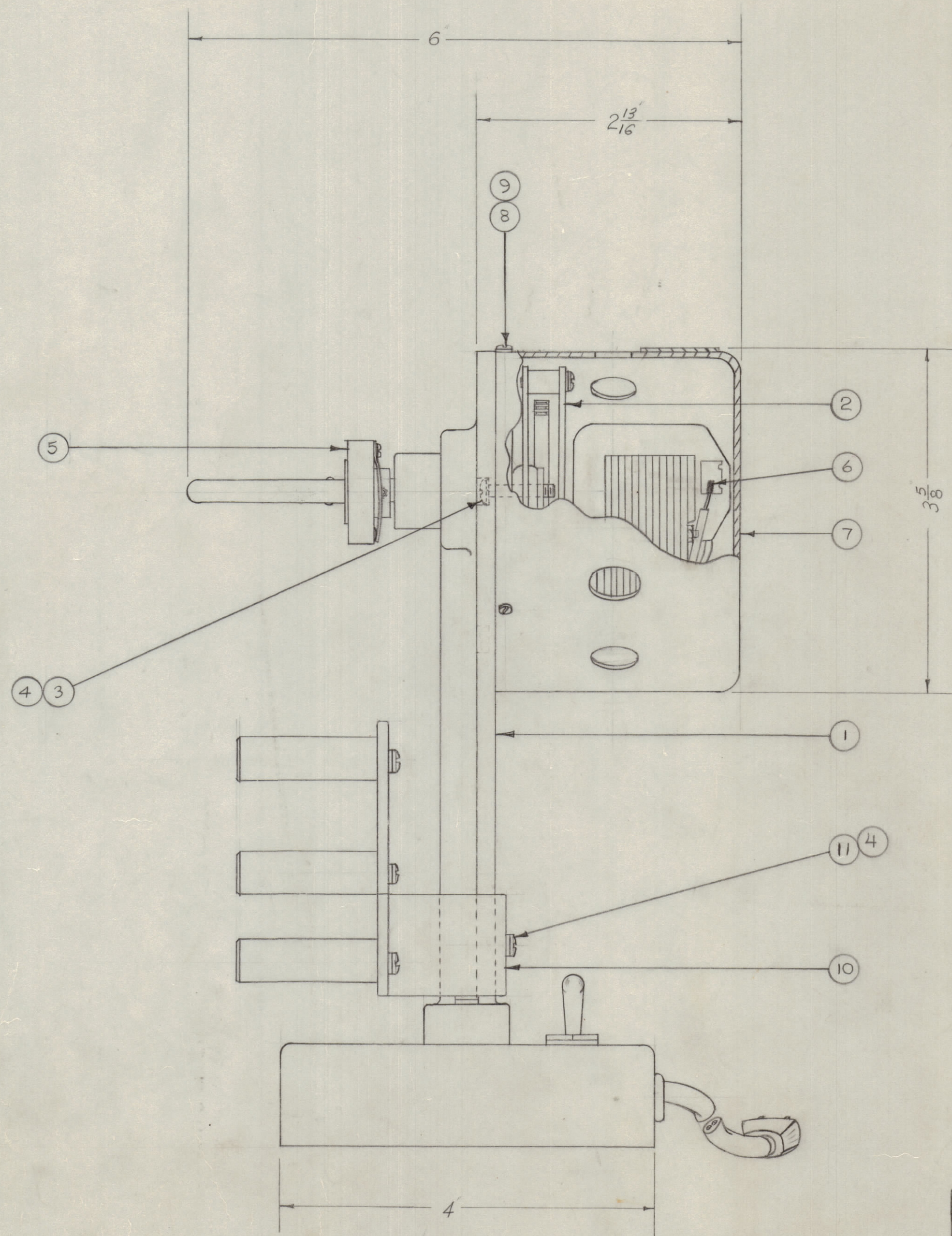
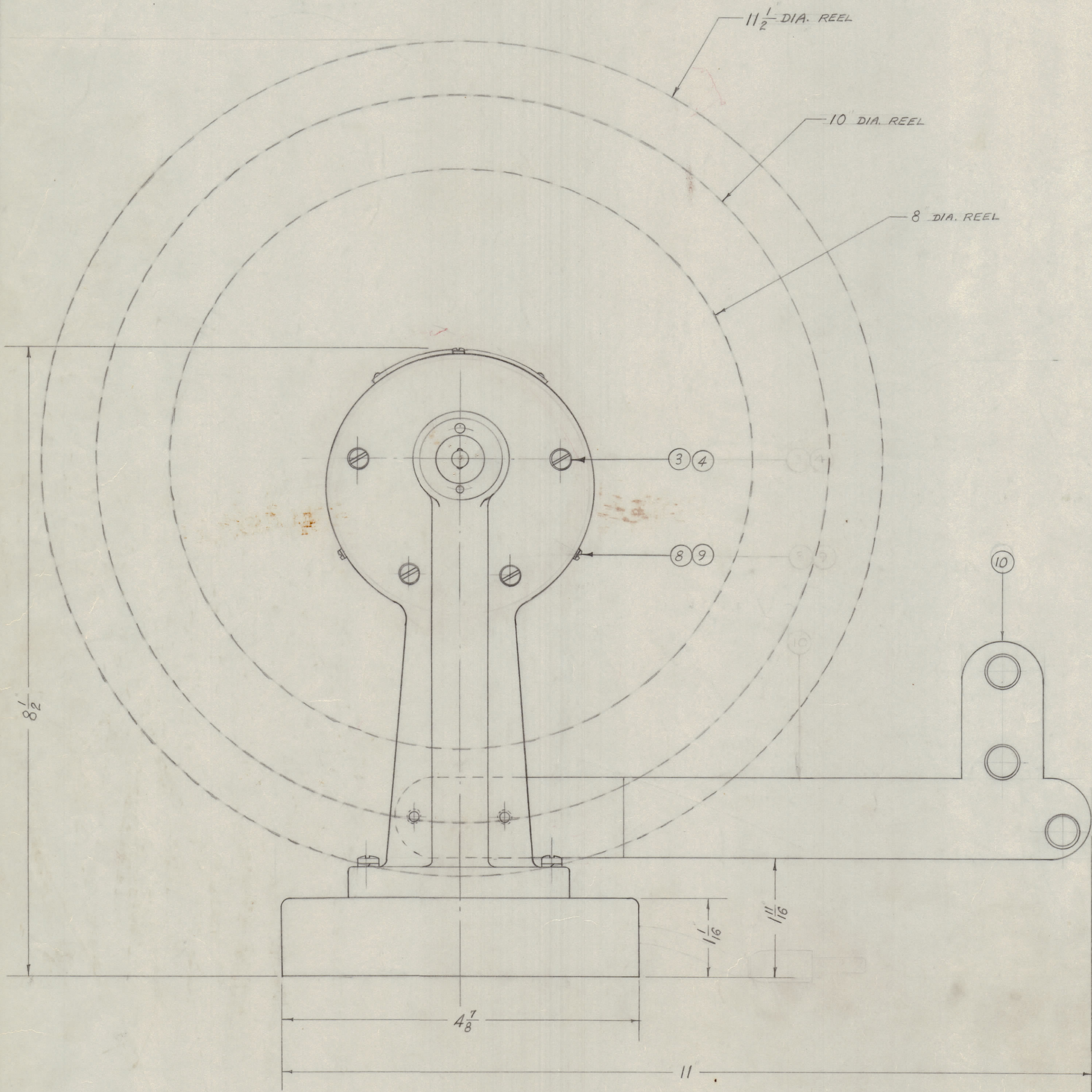


IF IT IS FOUND DESIRABLE TO CHANGE ANY TOLERANCE OR OTHER DETAIL SPECIFIED ON THIS DRAWING NOTIFY THE PURCHASER PROMPTLY.
 MAXIMUM ALLOWABLE TOLERANCES HAVE BEEN DETERMINED AND DEVIATIONS WILL BE CAUSE FOR REJECTION. REMOVE ALL BURRS AND SHARP EDGES

RELEASED



TMC ASSY No.	ITEM 2	USED
A273	A269	CK-2
A273-2	A269-2	CK-2A

NOTICE TO PERSONS RECEIVING THIS DRAWING

THE TECHNICAL MATERIEL CORPORATION claims proprietary right in the material disclosed hereon. This drawing is issued in confidence for engineering information only and may not be reproduced or used to manufacture anything shown hereon without permission from THE TECHNICAL MATERIEL CORPORATION to the user. This drawing is loaned for mutual assistance and is subject to recall at any time.

Property of:
 THE TECHNICAL MATERIEL CORPORATION
 MAMARONECK, NEW YORK

REQ. ITEM	PART NO.	DESCRIPTION	SYMBOL
2	11	SCPP1032BN7	SCREW, MACHINE
1	10	A-270	TAPE GUIDE ASSEMBLY
3	9	LWS04MRN	LOCKWASHER, SPLIT
3	8	SCPP0440BN3	SCREW, MACHINE
1	7	A-291	MOTOR COVER ASS'Y.
X	6	BS-100	SOLDER, SOFT
1	5	A-272	LOCKING PIN ASSEMBLY
6	4	LWS10MRN	LOCKWASHER, SPLIT
4	3	SCPP1032BN10	SCREW, MACHINE
1	2	SEE CHART	DRIVE ASSEMBLY
1	1	A-264	FRAME ASSEMBLY

THE TECHNICAL MATERIEL CORP. MAMARONECK, NEW YORK			
MAIN ASSEMBLY			
TAKE-UP REEL ASSEMBLY			
STOCK SIZE	16 12-1-52		
MATERIAL	WEIGHT PER PC.	DRAWN	ELEC. DES. APP.
TYPE & TEMPER	MECH. DES. APP.	HEAT TREAT. SPEC.	
FINISH & SPEC. NO.	CHECKED	FINAL APPROVAL	

CK-2	168	12-1-52
MODEL	PROJECT NO.	ASSY. NO.
DATE		
USED ON		

B	B/M CHART CLARIFIED ASSY CHART ADDED	6.20.64	16936	WVW	QCB	PK
A	DIMENSIONS ADDED	1-17-52	1	B	JAD	WVW
ISSUE ITEM	CHANGED FROM	DATE	CN. NO.	DRAFTS	CHECKER	ENG. APP.
TOLERANCES		SCALE: FULL SIZE				
ALL OTHERS	DEC. DIM. ± FRAC. DIM. ± ANGULAR DIM. ±	DRILL, PUNCH, COMMERCIAL STOCK SIZES AND MANUFACTURERS TOLERANCES ARE NOT INCLUDED.				

A-273 B