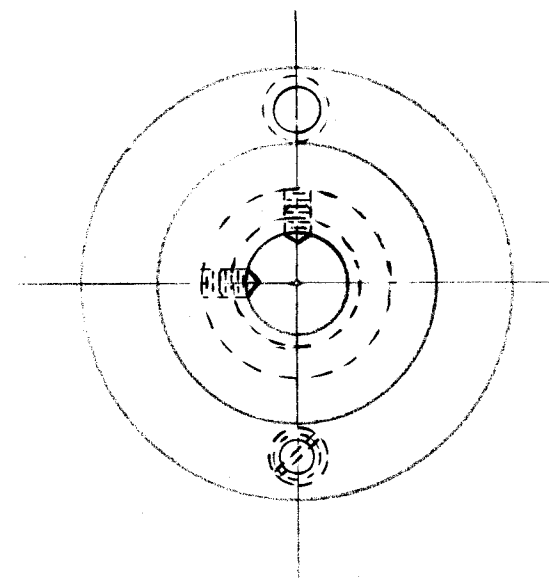
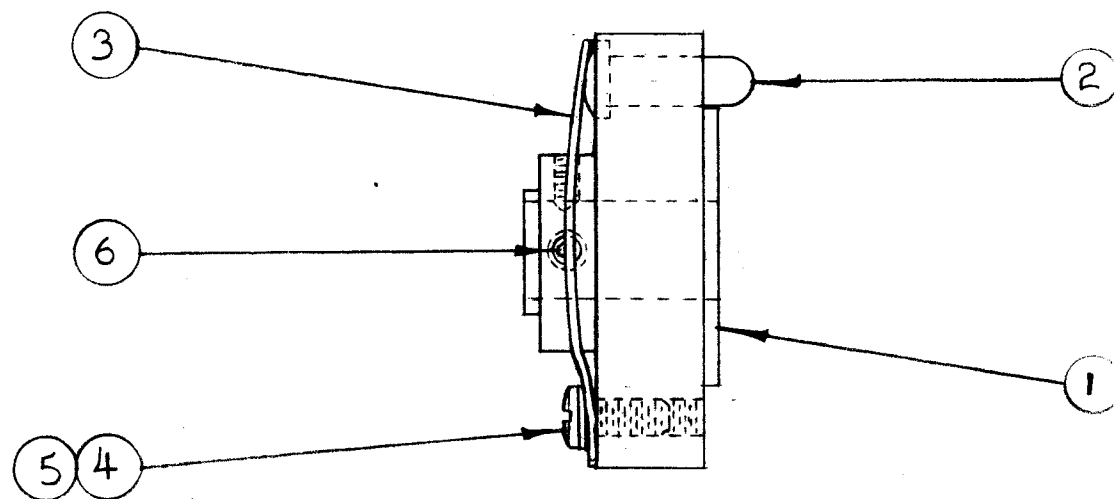


IF IT IS FOUND DESIRABLE TO CHANGE ANY TOLERANCE OR OTHER DETAIL SPECIFIED ON THIS DRAWING NOTIFY THE PURCHASER PROMPTLY.

MAXIMUM ALLOWABLE TOLERANCES HAVE BEEN DETERMINED AND DEVIATIONS WILL BE CAUSE FOR REJECTION. REMOVE ALL BURRS AND SHARP EDGES

RELEASED

A-272



2	6	AN565B4-H3	SET SCREW	
1	5	LWS04LRC	LOCKWASHER, SPLIT	
1	4	SCBS0440BC3	SCREW, MACHINE	
1	3	SP-108	RETAINING SPRING	
1	2	PN-103	LOCKING PIN	
1	1	PM-174	PIN GUIDE	
REQ.	ITEM	PART NO.	DESCRIPTION	SYMBOL
ff			THE TECHNICAL MATERIEL CORP.	
STOCK SIZE			MAMARONECK. NEW YORK	
ff		ff		LOCKING PIN
MATERIAL		WEIGHT PER PC.		ASS'Y.
ff			16 11-26-52	
TYPE & TEMPER			DRAWN	
ff			ELEC. DES. APP. MECH. DES. APP.	
HEAT TREAT. SPEC.			JA 12-12-52	
ff			CHECKED	
FINISH & SPEC. NO.			FINAL APPROVAL	
			A-272	

ISSUE	ITEM	CHANGED FROM	DATE	CN. NO.	DRAFTS	CHECKER	ENG. APP.
TOLERANCES		SCALE: $\frac{1}{16}$					
ALL OTHERS		DRILL, PUNCH, COMMERCIAL STOCK SIZES AND MANUFACTURERS TOLERANCES ARE NOT INCLUDED.					

CK-2	168	A-273	11-26-52
MODEL	PROJECT NO.	ASS'Y. NO.	DATE
USED ON			