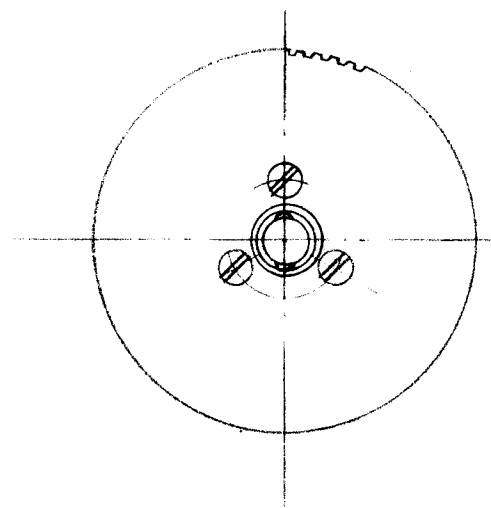
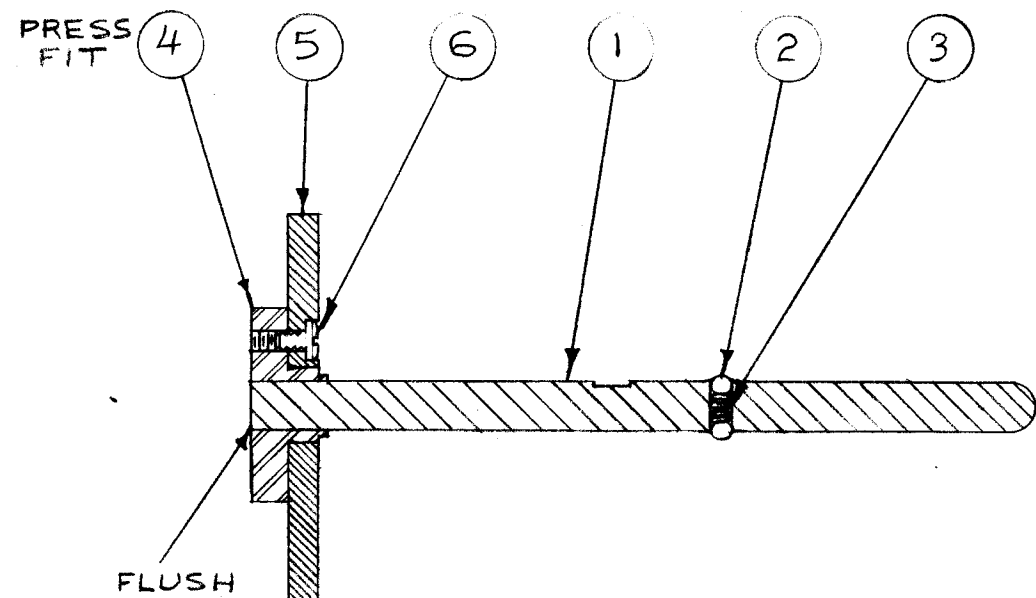


IF IT IS FOUND DESIRABLE TO CHANGE ANY TOLERANCE OR OTHER DETAIL SPECIFIED ON THIS DRAWING NOTIFY THE PURCHASER PROMPTLY.

MAXIMUM ALLOWABLE TOLERANCES HAVE BEEN DETERMINED AND DEVIATIONS WILL BE CAUSE FOR REJECTION. REMOVE ALL BURRS AND SHARP EDGES

RELEASED

A-268



3	6	SCBS0440BC3	SCREW, MACHINE	
1	5	GR-103	GEAR	
1	4	PM-168	GEAR HUB	
1	3	SP-107	SPRING	
2	2	BB-103-1	BALL BEARING	
1	1	PM-169	DRIVE SHAFT	
REQ.	ITEM	PART NO.	DESCRIPTION	SYMBOL
ff			THE TECHNICAL MATERIEL CORP.	
STOCK SIZE			MAMARONECK. NEW YORK	
ff			GEAR ASS'Y.	
MATERIAL			WEIGHT PER PC.	
ff			ff	
TYPE & TEMPER			16 11-24-52	
ff			DRAWN	
HEAT TREAT. SPEC.			ELEC. DES. APP.	
ff			MECH. DES. APP.	
FINISH & SPEC. NO.			16 12-15-52	
			CHECKED	
			FINAL APPROVAL	
			A-268	

ISSUE	ITEM	CHANGED FROM	DATE	CN. NO.	DRAFTS	CHECKER	ENG. APP.
TOLERANCES		SCALE: FULL SIZE					
ALL OTHERS	DEC. DIM. ± FRAC. DIM. ± ANGULAR DIM. ±	DRILL, PUNCH, COMMERCIAL STOCK SIZES AND MANUFACTURERS TOLERANCES ARE NOT INCLUDED.					

CK-2	168	A-269	11-24-52
MODEL	PROJECT NO.	ASS'Y. NO.	DATE
USED ON			