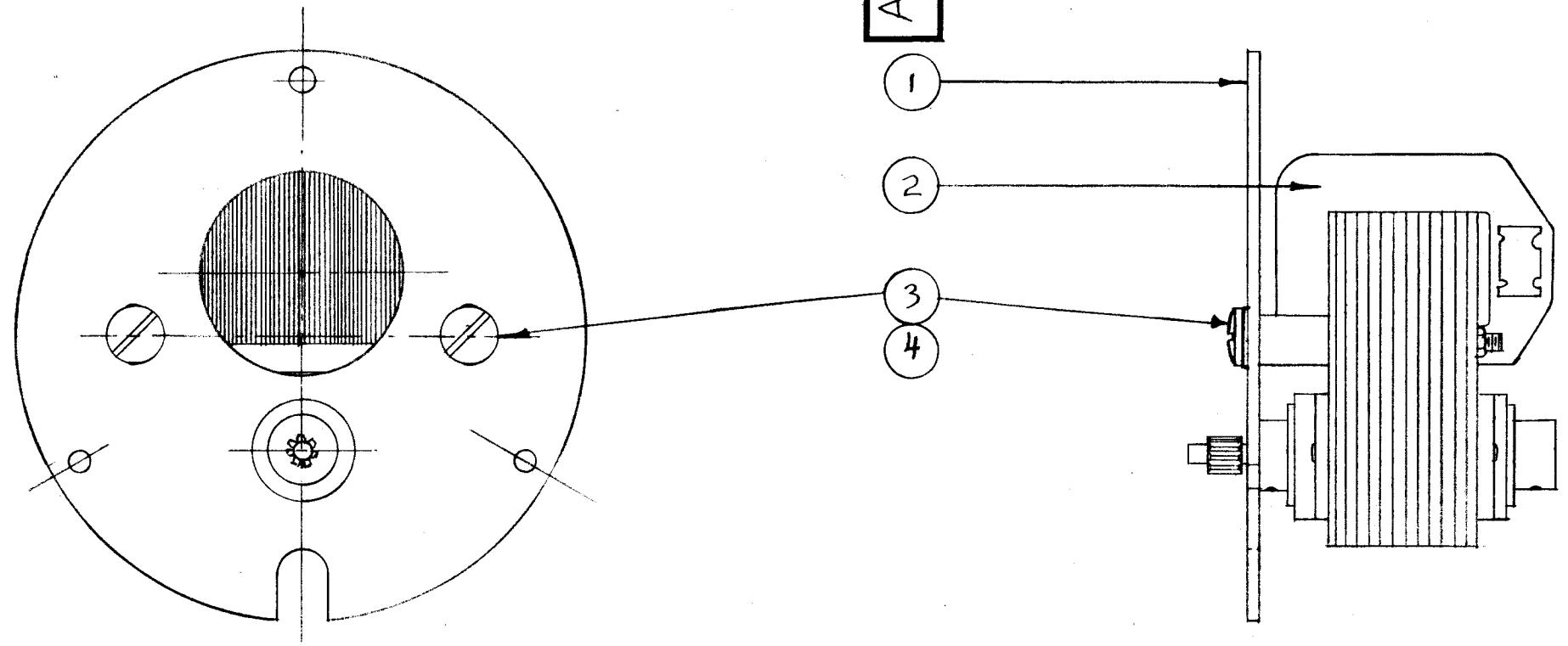


IF IT IS FOUND DESIRABLE TO CHANGE ANY TOLERANCE OR OTHER DETAIL SPECIFIED ON THIS DRAWING NOTIFY THE PURCHASER PROMPTLY.

MAXIMUM ALLOWABLE TOLERANCES HAVE BEEN DETERMINED AND DEVIATIONS WILL BE CAUSE FOR REJECTION. REMOVE ALL BURRS AND SHARP EDGES

RELEASED

A-267 A



TMC ASSY NO.	ITEM 2	USED ON
A267	A262	CK-2
A267-2	A4469	CK-2A

REQ.	ITEM	PART NO.	DESCRIPTION	SYMBOL
2	4	LW110LRN	LOCKWASHER, INT.	
2	3	SCBPI032BN4	SCREW, MACHINE	
1	2	SEE CHART	MOTOR ASS'Y.	
1	1	PM-167	MOTOR SUPPORT	
STOCK SIZE			THE TECHNICAL MATERIEL CORP. MAMARONECK. NEW YORK	
MATERIAL			MOTOR MOUNT	
WEIGHT PER PC.			ASS'Y.	
TYPE & TEMPER			16 11-24-52	
HEAT TREAT. SPEC.			JAD 12-12-52	
FINISH & SPEC. NO.			CHECKED	FINAL APPROVAL

ISSUE	ITEM	CHANGED FROM	DATE	CN. NO.	DRAFTS	CHECKER	ENG. APP.
A		ADD CHART REVISED ITEMS 2-4	6/2/66	16294	C.H.	JCB	MM

TOLERANCES		SCALE: FULL SIZE
ALL OTHERS	DEC. DIM. ± FRAC. DIM. ± ANGULAR DIM. ±	DRILL, PUNCH, COMMERCIAL STOCK SIZES AND MANUFACTURERS TOLERANCES ARE NOT INCLUDED.

CK-2	168	A-269	11-24-52
MODEL	PROJECT NO.	ASS'Y. NO.	DATE
USED ON			