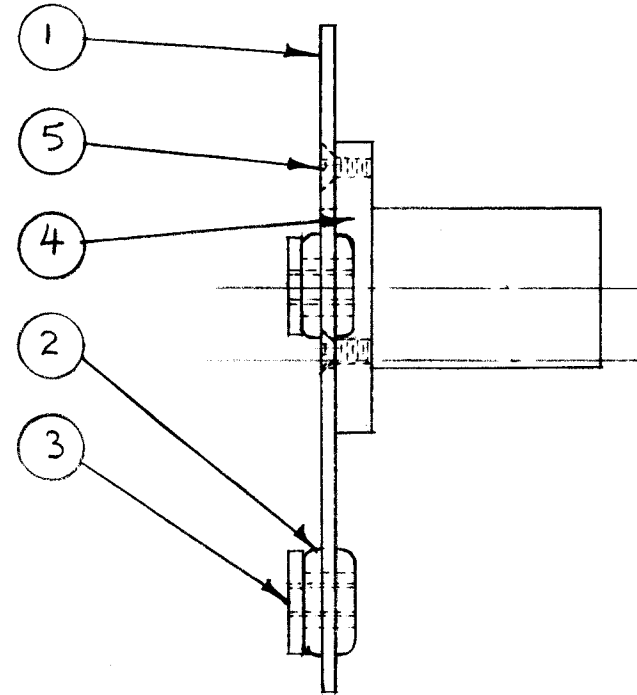
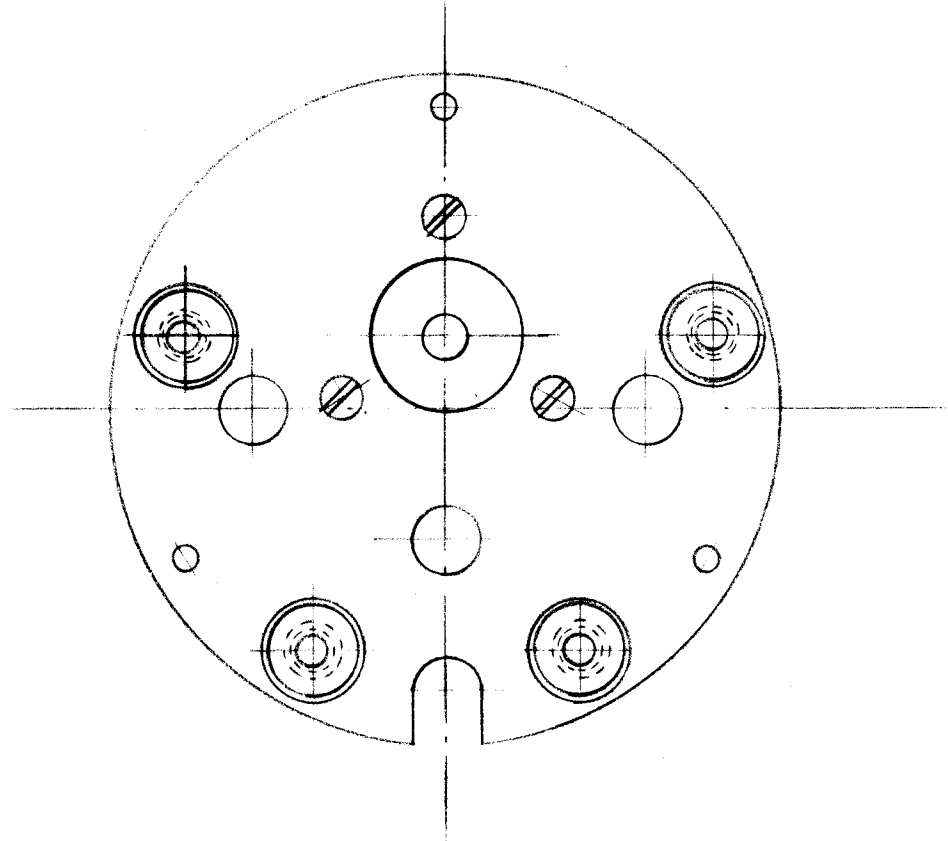


IF IT IS FOUND DESIRABLE TO CHANGE ANY TOLERANCE OR OTHER DETAIL SPECIFIED ON THIS DRAWING NOTIFY THE PURCHASER PROMPTLY.

MAXIMUM ALLOWABLE TOLERANCES HAVE BEEN DETERMINED AND DEVIATIONS WILL BE CAUSE FOR REJECTION. REMOVE ALL BURRS AND SHARP EDGES

RELEASED

A-266



3	5	SCFS0440BC4	SCREW, MACHINE	
1	4	A-265	BEARING SUPPORT ASSY.	
4	3	PM-165	SPACER	
4	2	EY-102-13	GROMMET, ELASTIC	
1	1	PM-164	BASE PLATE	
REQ.	ITEM	PART NO.	DESCRIPTION	SYMBOL
— <i>ff</i> —			THE TECHNICAL MATERIEL CORP.	
STOCK SIZE			MAMARONECK. NEW YORK	
— <i>ff</i> —		— <i>ff</i> —	MOUNTING ASS'Y.	
MATERIAL		WEIGHT PER PC.		
— <i>ff</i> —			15 11-21-52	
TYPE & TEMPER			DRAWN	ELEC. DES. APP. MECH. DES. APP.
— <i>ff</i> —			12-15-52	
HEAT TREAT. SPEC.			CHECKED	FINAL APPROVAL
— <i>ff</i> —			A-266	
FINISH & SPEC. NO.				

ISSUE	ITEM	CHANGED FROM	DATE	CN. NO.	DRAFTS	CHECKER	ENG. APP.
TOLERANCES				SCALE: FULL SIZE			
ALL OTHERS	DEC. DIM. ±	FRAC. DIM. ±	ANGULAR DIM. ±	DRILL, PUNCH, COMMERCIAL STOCK SIZES AND MANUFACTURERS TOLERANCES ARE NOT INCLUDED.			

CK-2	168	A-269	11-21-52
MODEL	PROJECT NO.	ASS'Y. NO.	DATE
USED ON			