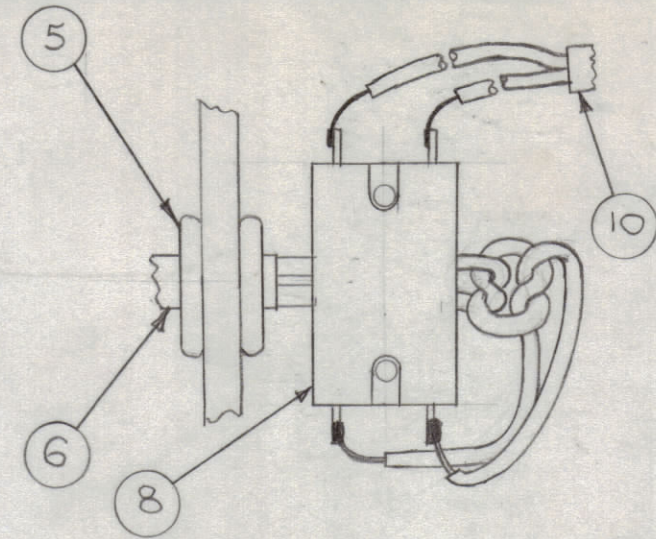
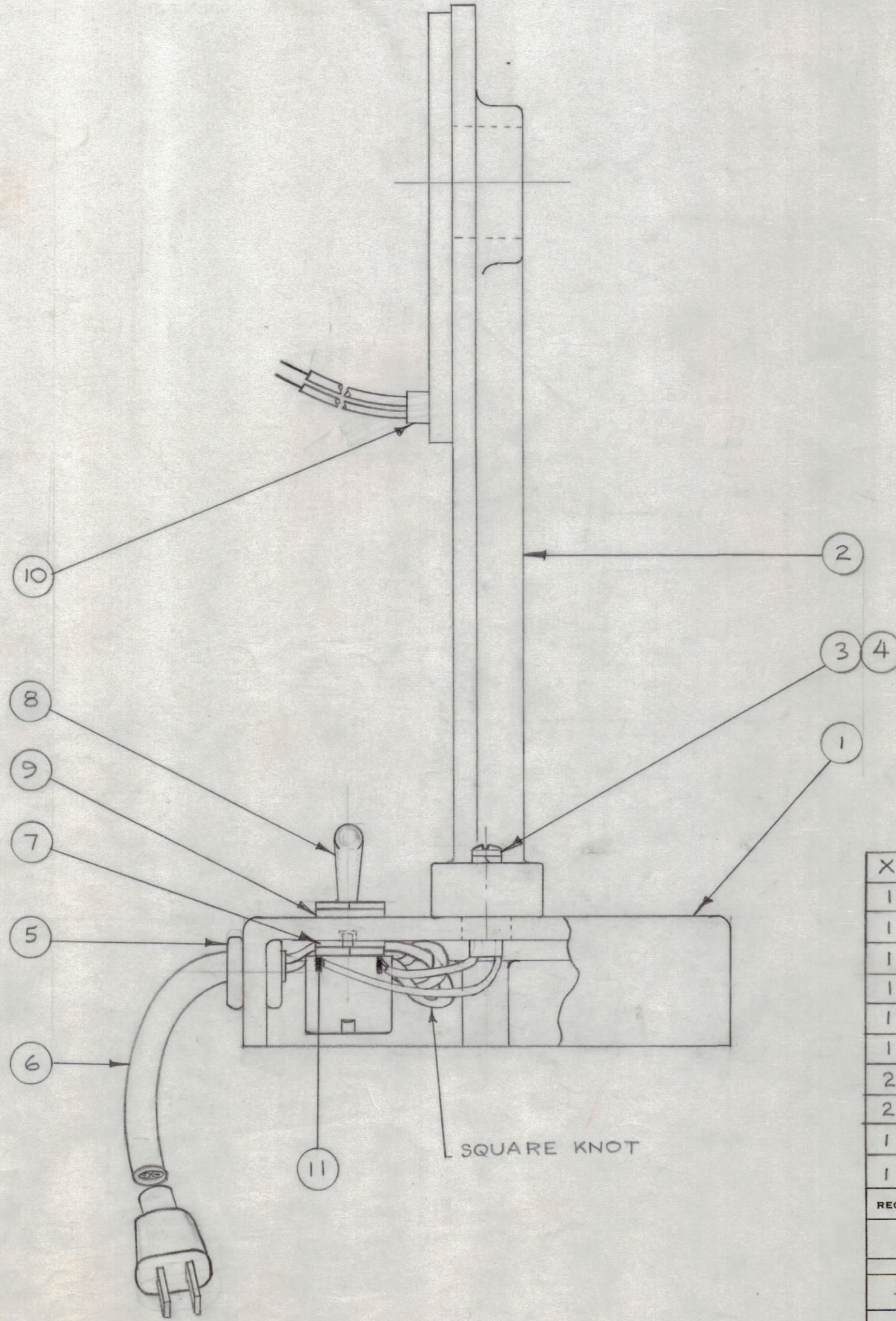
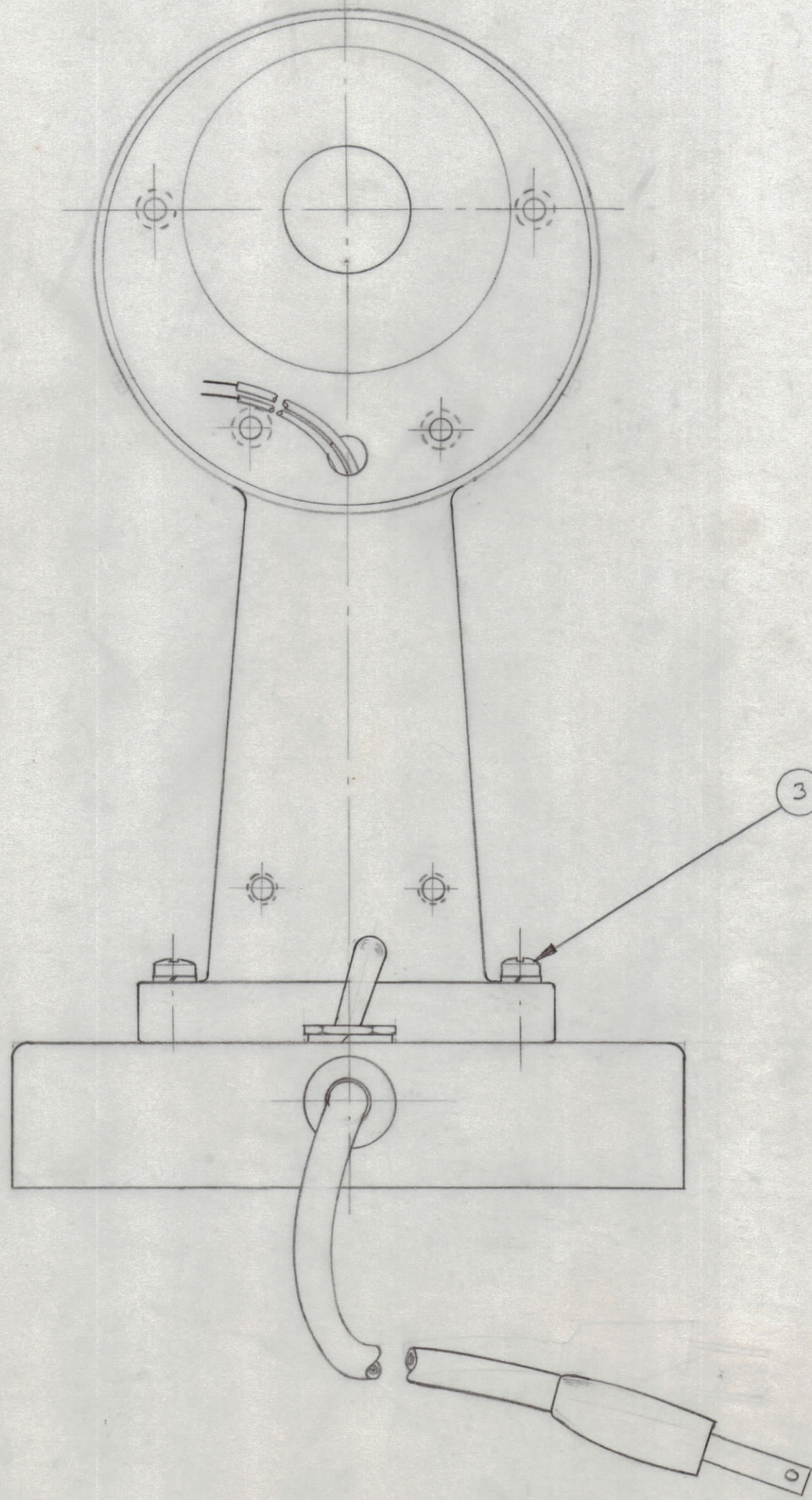


IF IT IS FOUND DESIRABLE TO CHANGE ANY TOLERANCE OR OTHER DETAIL SPECIFIED ON THIS DRAWING NOTIFY THE PURCHASER PROMPTLY.

MAXIMUM ALLOWABLE TOLERANCES HAVE BEEN DETERMINED AND DEVIATIONS WILL BE CAUSE FOR REJECTION. REMOVE ALL BURRS AND SHARP EDGES

RELEASED



BOTTOM VIEW
ITEM 8

NOTICE TO PERSONS RECEIVING THIS DRAWING
THE TECHNICAL MATERIEL CORPORATION claims proprietary right in the material disclosed herein. This drawing is issued in confidence for engineering information only and may not be reproduced or used to manufacture anything shown hereon without permission from THE TECHNICAL MATERIEL CORPORATION to the user. This drawing is loaned for mutual assistance and is subject to recall at any time.

Property of:
THE TECHNICAL MATERIEL CORPORATION
MAMARONECK, NEW YORK

A-264 A

X	11	BS-100	SOLDER, SOFT	
1	10	CA-241	MOTOR CABLE	
1	9	LW150LRC	LOCKWASHER, INTERNAL	
1	8	ST26K	SWITCH, TOGGLE	
1	7	WA-100	RING, LOCKING	
1	6	CA-13B	POWER CABLE	
1	5	AN931B4-7	GROMMET	
2	4	LWS10MRC	LOCKWASHER, SPLIT	
2	3	SCPS1032BC10	SCREW, MACHINE	
1	2	CS-110	PEDESTAL	
1	1	CS-109	BASE CASTING	
REQ. ITEM	PART NO.		DESCRIPTION	SYMBOL
—//—			THE TECHNICAL MATERIEL CORP.	
STOCK SIZE			MAMARONECK, NEW YORK	
—//—			FRAME ASSEMBLY	
MATERIAL		WEIGHT PER PC.		
—//—			1612-2-52	
TYPE & TEMPER		DRAWN		
—//—		ELEC. DES. APP.		
HEAT TREAT. SPEC.		MECH. DES. APP.		
—//—		CHECKED		
		FINAL APPROVAL		
		APR 1 1969		
		A-264 A		
		FINISH & SPEC. NO.		

A	1	ITEM #10 WAS WI-111	8-26-60	2870	RU	QCB	YD
ISSUE	ITEM	CHANGED FROM	DATE	CN. NO.	DRAFTS	CHECKER	ENG. APP.
TOLERANCES		SCALE: FULL SIZE					
ALL OTHERS	DEC. DIM. ± FRAC. DIM. ± ANGULAR DIM. ±		DRILL, PUNCH, COMMERCIAL STOCK SIZES AND MANUFACTURERS TOLERANCES ARE NOT INCLUDED.				

CK-2	168	A-273	12-2-52
MODEL	PROJECT NO.	ASS'Y. NO.	DATE
USED ON			