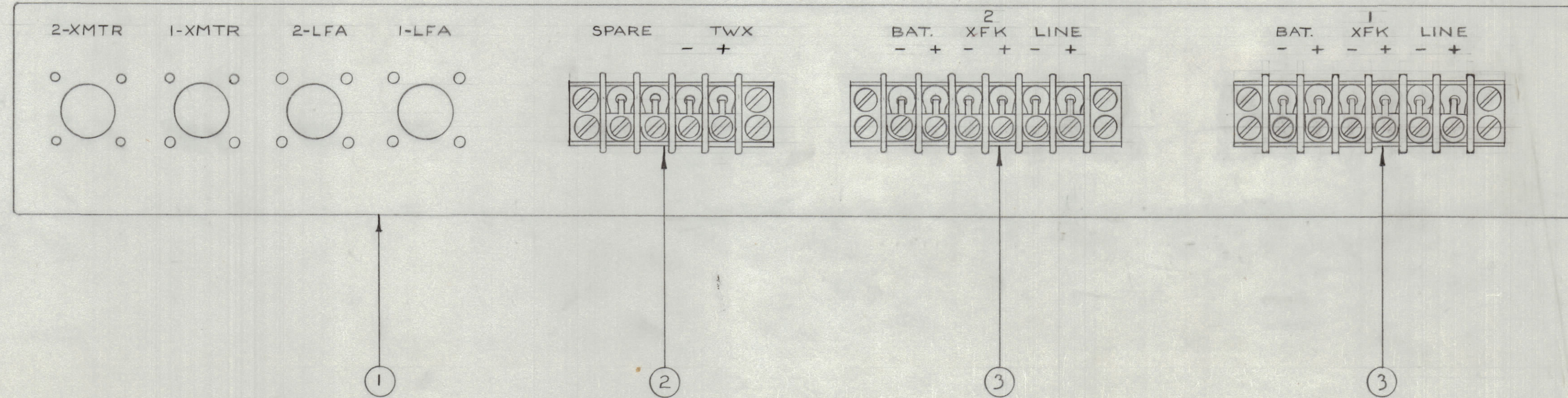
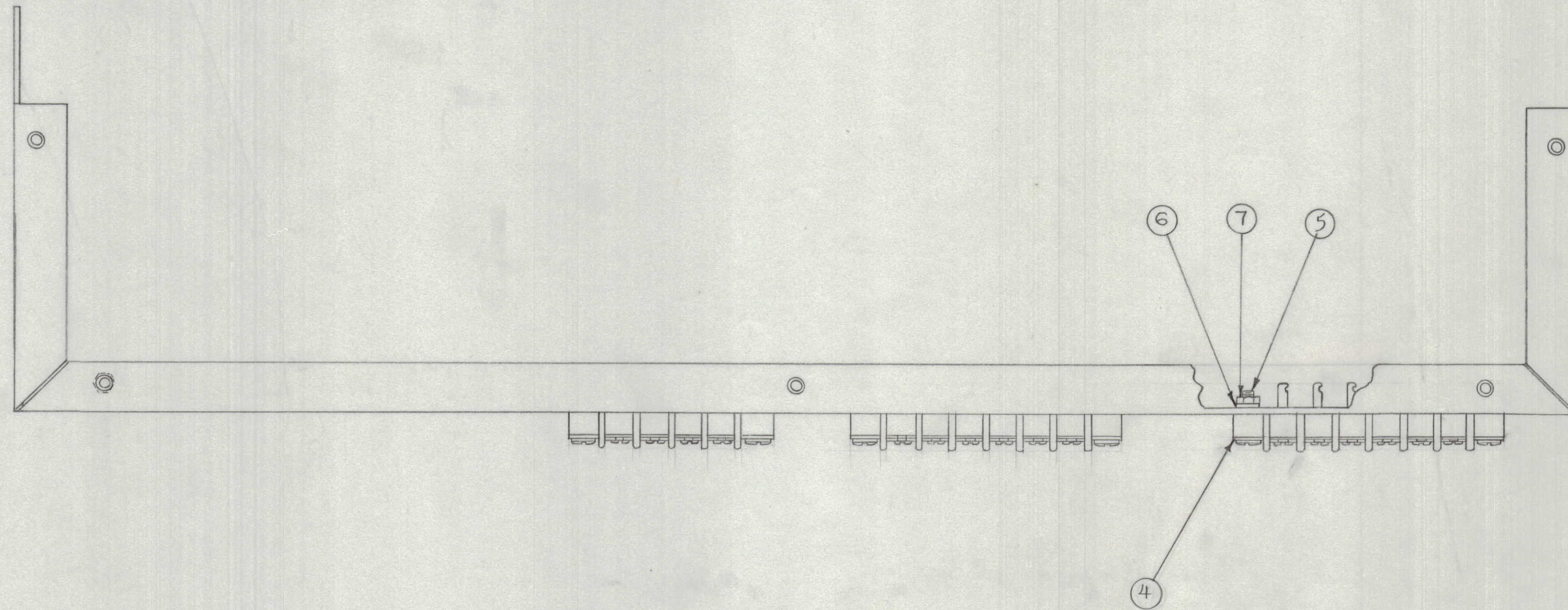


IF IT IS FOUND DESIRABLE TO CHANGE ANY TOLERANCE OR OTHER DETAIL SPECIFIED ON THIS DRAWING NOTIFY THE PURCHASER PROMPTLY.  
 MAXIMUM ALLOWABLE TOLERANCES HAVE BEEN DETERMINED AND DEVIATIONS WILL BE CAUSE FOR REJECTION. REMOVE ALL BURRS AND SHARP EDGES.

RELEASED



**NOTICE TO PERSONS RECEIVING THIS DRAWING**

THE TECHNICAL MATERIEL CORPORATION claims proprietary right in the material disclosed herein. This drawing is issued in confidence for engineering information only and may not be reproduced or used to manufacture anything shown herein without permission from THE TECHNICAL MATERIEL CORPORATION to the user. This drawing is loaned for mutual assistance and is subject to recall at any time.

Property of:  
 THE TECHNICAL MATERIEL CORPORATION  
 MAMARONECK, NEW YORK

REQ. ITEM	PART NO.	DESCRIPTION	SYMBOL
12	7	NTH0632BC8	NUT, HEX.
12	6	LWS06MRC	WASHER, LOCK
12	5	SCBS0632BC10	SCREW, MACHINE
6	4	MS-154-1	SADDLE PLATE
2	3	TM-100-6	TERMINAL STRIP
1	2	TM-100-4	TERMINAL STRIP
1	1	A-253	WRAP AROUND ASS'Y.
STOCK SIZE		THE TECHNICAL MATERIEL CORP. MAMARONECK, NEW YORK	
MATERIAL		CHASSIS ASSEMBLY	
TYPE & TEMPER		15 11-12-52	
HEAT TREAT. SPEC.		MD 11/14/52	
FINISH & SPEC. NO.		M.H.S.	A-254

EPP	162	A-253	11-12-52
MODEL	PROJECT NO.	ASSY. NO.	DATE
USED ON			

ISSUE	ITEM	CHANGED FROM	DATE	CN. NO.	DRAFTS	CHECKER	ENG. APP.
TOLERANCES		SCALE: FULL SIZE					
ALL OTHERS	DEC. DIM. $\pm$ FRAC. DIM. $\pm$ ANGULAR DIM. $\pm$	DRILL, PUNCH, COMMERCIAL STOCK SIZES AND MANUFACTURERS TOLERANCES ARE NOT INCLUDED.					