

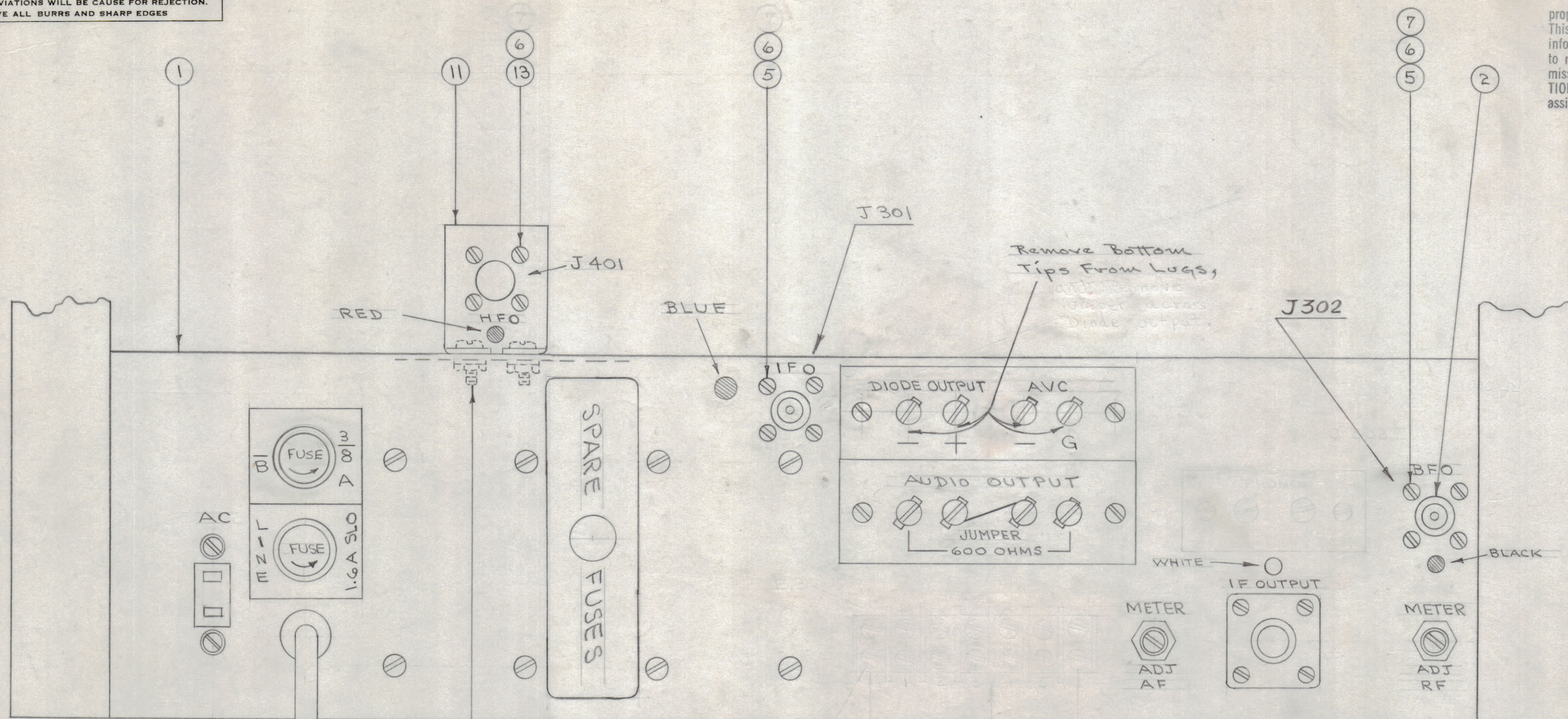
IF IT IS FOUND DESIRABLE TO CHANGE ANY TOLERANCE OR OTHER DETAIL SPECIFIED ON THIS DRAWING NOTIFY THE PURCHASER PROMPTLY.

MAXIMUM ALLOWABLE TOLERANCES HAVE BEEN DETERMINED AND DEVIATIONS WILL BE CAUSE FOR REJECTION. REMOVE ALL BURRS AND SHARP EDGES

NOTICE TO PERSONS RECEIVING THIS DRAWING

THE TECHNICAL MATERIEL CORPORATION claims proprietary right in the material disclosed hereon. This drawing is issued in confidence for engineering information only and may not be reproduced or used to manufacture anything shown hereon without permission from THE TECHNICAL MATERIEL CORPORATION to the user. This drawing is loaned for mutual assistance and is subject to recall at any time.

Property of:
THE TECHNICAL MATERIEL CORPORATION
MAMARONECK, NEW YORK



A-252 B

NOTE:
STAMP HFO AND RED DOT
STAMP IFO AND BLUE DOT
STAMP BFO AND BLACK DOT
STAMP IF OUTPUT WITH WHITE DOT

1	14	TE-104-3	TERMINAL, LOCKING	
4	13	SCBS0356BC3	SCREW, MACHINE	
2	12	SCBS0632BC8	SCREW, MACHINE	
1	11	MS-369	BRACKET	
2	10	NTH0632BC8	NUT, HEX.	
2	9	LWS06MRC	LOCKWASHER, SPLIT	
1	8		DELETED	
4	7	NTH0356BC6	NUT, HEX.	
12	6	LWS03MRC	LOCKWASHER, SPLIT	
8	5	SCBS0356BC5	SCREW, MACHINE	
1	4		DELETED	
1	3		DELETED	
1	2	UG-290/U	CONNECTOR, R.F.	J302
1	1	MS-150	REAR CHASSIS DRILL PLAN	

REQ. ITEM	PART NO.	DESCRIPTION	SYMBOL
THE TECHNICAL MATERIEL CORP. MAMARONECK, NEW YORK			
REAR PANEL ASSEMBLY			
C.D. 9-24-52			
DRAWN		ELEC. DES. APP.	MECH. DES. APP.
CHECKED		FINAL APPROVAL	
		A-252 B	

B	2	DIODE NOTE REMOVED	5/12/52	2	LABE	C.D.B	AMB
A	1	ITEMS 3-4-8 DELETED	7/1/53	1	AMB		PJK
ISSUE	ITEM	CHANGED FROM	DATE	CN. NO.	DRAFTS	CHECKER	ENG. APP.
TOLERANCES		SCALE: 11					
ALL OTHERS	DEC. DIM. ± FRAC. DIM. ± ANGULAR DIM. ±	DRILL, PUNCH, COMMERCIAL STOCK SIZES AND MANUFACTURERS TOLERANCES ARE NOT INCLUDED.					

DMK-4	140		9-24-52
MODEL	PROJECT NO.	ASS'Y. NO.	DATE
USED ON			