

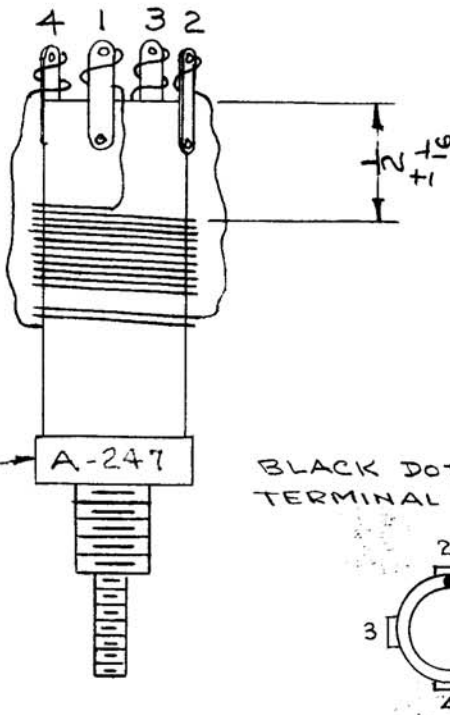
A-247

Primary : $14\frac{1}{2}$ Turns, #20 DSC, clos wound

Winding direction is unimportant.

Secondary : $2\frac{1}{2}$ Turns, #20 DSC, close wound

WI-107-1



Note:

Lead should not enter lug bas ; but should be connected as shown here:



STAMP Y8
BLACK GOTHIC

A-247

BLACK DOT AS SHOWN
TERMINAL 2

Secondary is wound on the coil form immediately adjacent to primary/

Leads from windings to lugs should be run through thin spaghetti.

Entire coil form must be covered with GL-10A-2; and then Baked for 2 Hours at 70°C or 160°F.

Primary : (Lmax. : 3 microhenry, Q : 83
Lmin. : 1.84 microhenry, Q : 108

Form : LS4 with red slug (20063 - K), diameter : 1/2" CF-106-1
Cambridge Thermionic Corporation

Tolerance : L max. \pm .2 microhenry Q must be greater than 65
L min. \pm .1 microhenry
Measured at 7.9 Mc.

USED ON AG10-3

ATTENTION: This print supercedes # AEM 099

ISSUE	ITEM	CHANGED FROM	DATE	CN. NO	DRAFT	CHK.	APP.
C	1	USED ON NO. WAS A-615	9/25/63	9995			
B	2	BAKE NOTE ADDED WAS GL-102	1/18/54	15			
A	1	BLACK DOT ADDED	11/1/53	1			

DATE	4/30/50
DRN.	AJD
CHKD.	A. J. J.
APPD.	A. J. J.

COIL	L 206
MODEL	VOX, VOX-1, 2, 3, 4, 5, 6

THE TECHNICAL MATERIEL CORPORATION	
MAMARONECK, NEW Y RK	
SHEET	OF NO. A-247 C