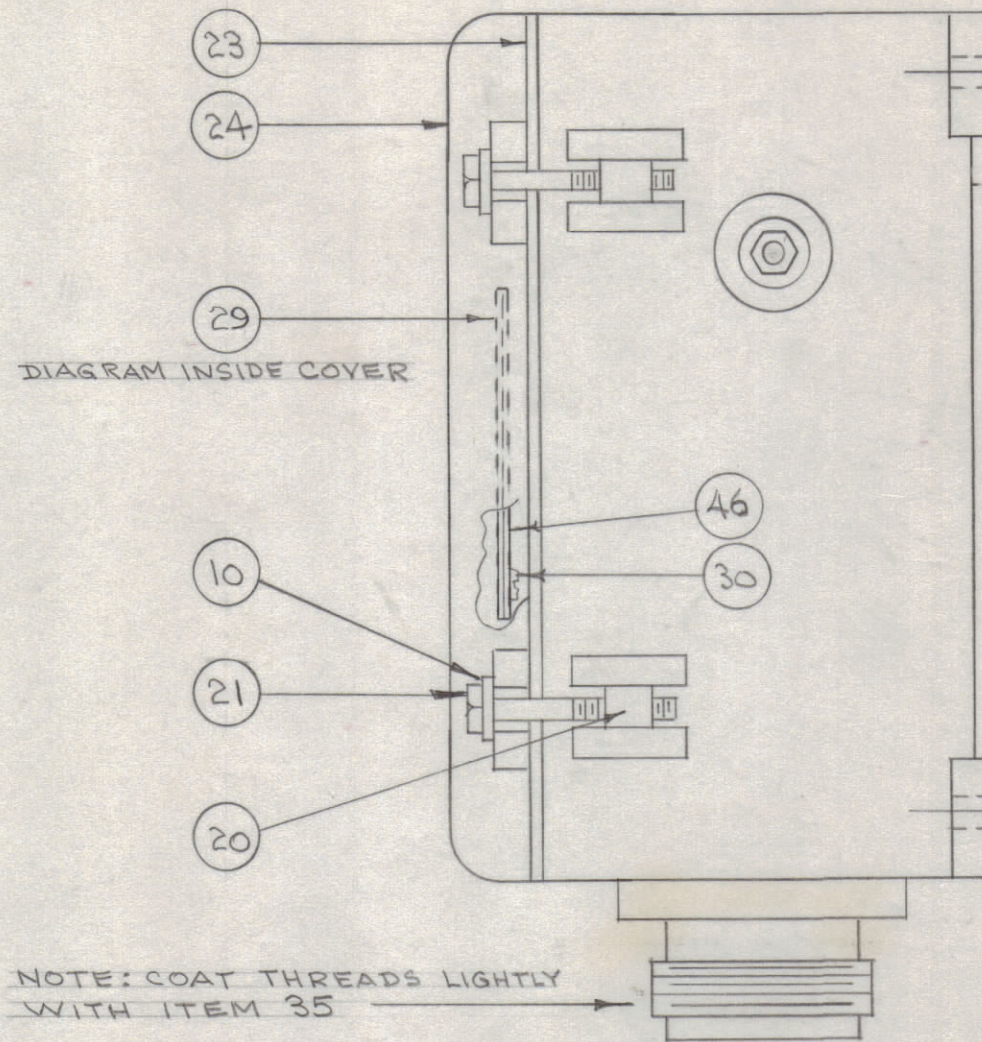
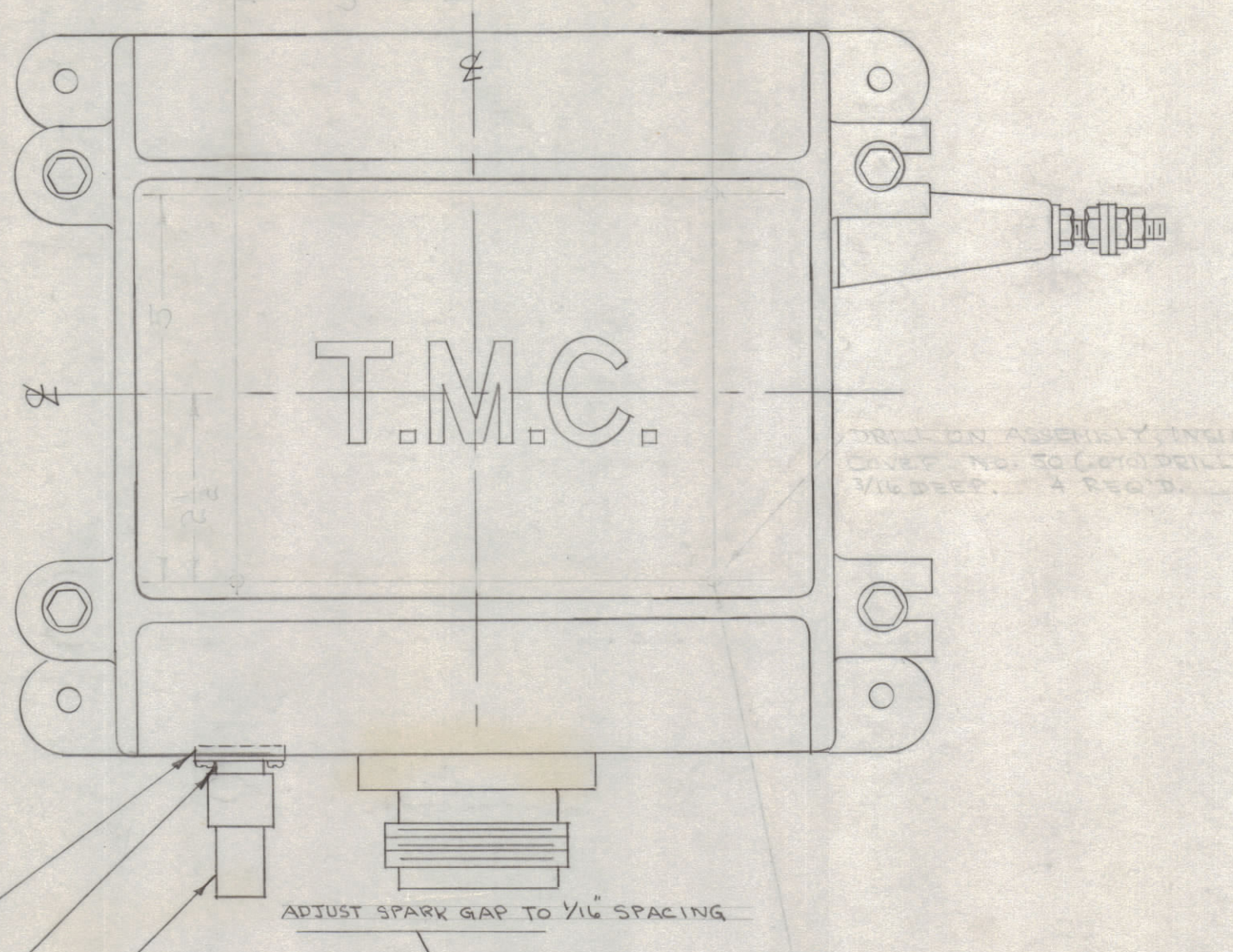
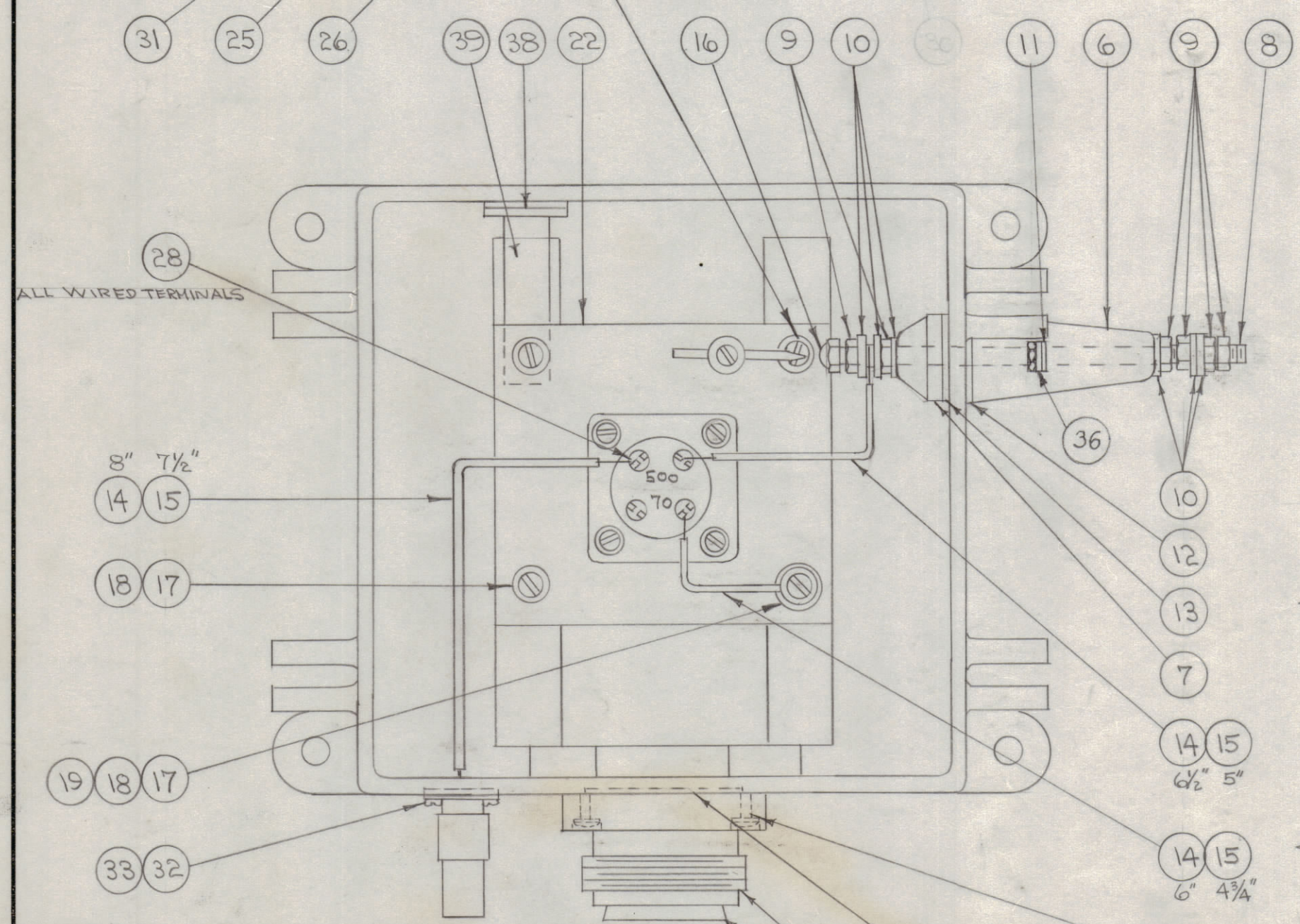


IF IT IS FOUND DESIRABLE TO CHANGE ANY TOLERANCE OR OTHER DETAIL SPECIFIED ON THIS DRAWING NOTIFY THE PURCHASER PROMPTLY.  
 MAXIMUM ALLOWABLE TOLERANCES HAVE BEEN DETERMINED AND DEVIATIONS WILL BE CAUSE FOR REJECTION. REMOVE ALL BURRS AND SHARP EDGES

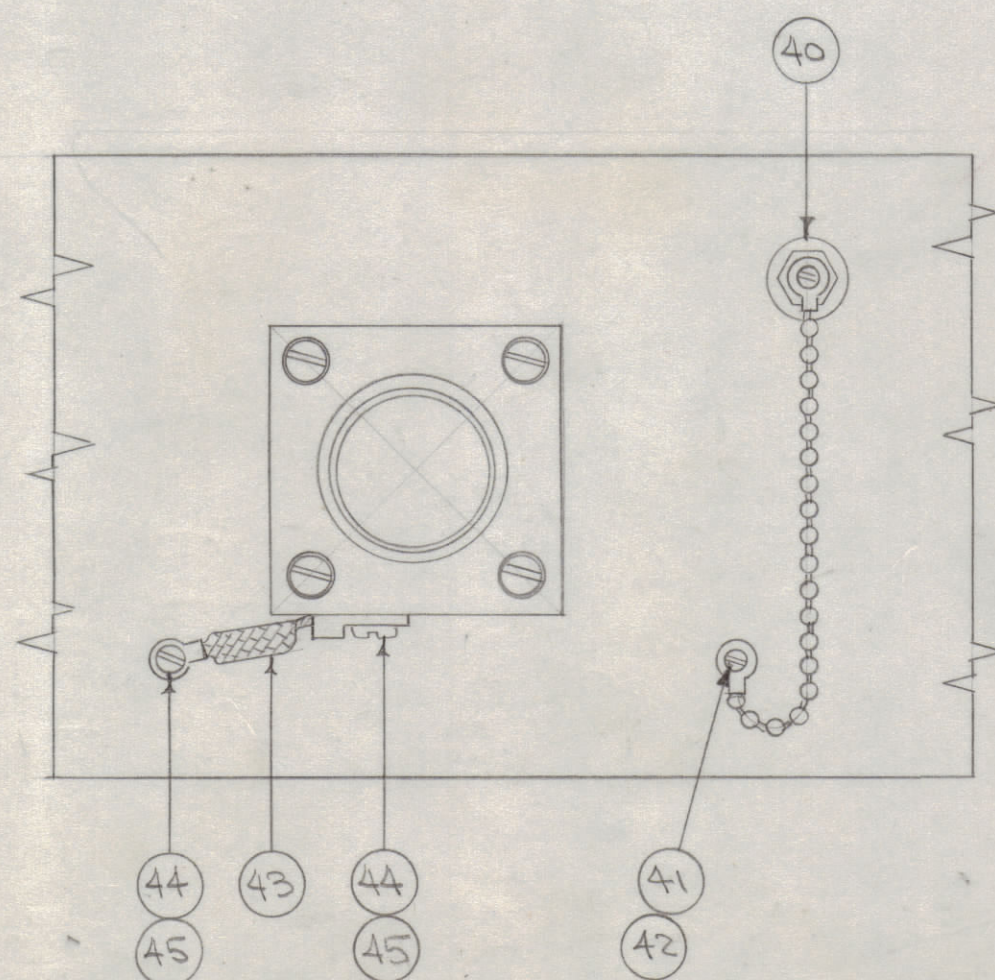
NOTE: CEMENT ITEM 23 TO ITEM 24 WITH ITEM 34.



1	46	PX-115	GUARD
2	45	SCBS1032BC6	SCREW, MACHINE
2	44	LWE10MRC	WASHER, LOCK
1	43	A-114B	GROUND STRAP ASSY.
1	42	SCBS0632BC3	SCREW, MACHINE
1	41	LWE06MRC	WASHER, LOCK
1	40	A-1291	DRAIN PLUG ASSY.
1	39	MS-933	HOLDER, DESSICANT
2	38	AD-101-1/6	DESSICANT
1	37	RY-114-77716	STOPPER
2	36	FW25LBC	WASHER, FLAT
X	35	LU-102	ANTI-SIEZE COMPOUND
X	34	GL-101-2	CEMENT, PLIOBOND
4	33	LWE04MRC	LOCKWASHER, EXT.
4	32	SCBS0440BN6	SCREW, MACHINE
1	31	GA-106	GASKET
4	30	SC-102-1	SCREW, THD. CUTTING
1	29	LD-107	SCHEMATIC DIAGRAM
X	28	BS-100	SOLDER, SOFT
-	27		DELETED
1	26	PL-259A	PLUG
1	25	SO-239	RECEPTACLE
1	24	PM-105	COVER
1	23	GA-103	GASKET, COVER
1	22	A-137	TRANSFORMER, SUBASSY.



NOTE  
 THE 6" AND 6 1/2" PIECES OF ITEM 14 HAVE 1/4 I.D. LOOPS ON ONE END.  
 ITEM 26 IS SUPPLIED AS A LOOSE ITEM.



4	21	SCHH252DSS28	BOLT, HEX
4	20	PM-100	PIN, COVER BOLT
1	19	FW08MBC	WASHER, FLAT
4	18	LWE08MRC	LOCKWASHER, EXT.
4	17	SCBS0832BC6	SCREW, MACHINE
1	16	NTC2520BCL	NUT, CAP
1 1/4"	15	PX-100-1-.066	INSULATION, SLEEVING
20 1/2"	14	WL-100-4	WIRE, BUSS BAR
1	13	GA-101	GASKET
1	12	GA-100	GASKET
1	11	GA-104	GASKET
10	10	FW25MSC	WASHER, FLAT
6	9	NTH2520BN4	NUT, HEX
1	8	A-100	STUD, SUB ASSY.
1	7	NS-101	INSULATOR, INSIDE
1	6	NS-100	INSULATOR, OUTSIDE
4	5	SCRS2520SS12	SCREW, MACHINE
4	4	LWS25MSS	LOCKWASHER, SPLIT
1	3	PM-107	FLANGE, COUPLING
1	2	GA-102	GASKET
1	1	PM-111	CASE

F	1	ITEM (21) WAS SC-100	2-19-63	8275	SP	NO	QJH
E	1	ITEMS 37 THRU 46 ADDED	9/11/63	5	ESS	QJH	
D	2	#36 WAS ADDED	8-24-53	4	F.M.	QJH	
	1	WL-100-4 WAS WL-100-3					
		REDRAWN- NO CHANGE	4/1/53		C.D.D.	QJH	
ISSUE	ITEM	CHANGED FROM	DATE	CN. NO.	DRAFTS	CHECKER	ENG. APP.
TOLERANCES		SCALE:					
ALL OTHERS	DEC. DIM. ±	DRILL, PUNCH, COMMERCIAL STOCK SIZES AND MANUFACTURERS TOLERANCES ARE NOT INCLUDED.					
	FRAC. DIM. ±						
	ANGULAR DIM. ±						

BAC-3-S-500	153		9-5-52
MODEL	PROJECT NO.	ASSY. NO.	DATE
USED ON			

REQ. ITEM	PART NO.	DESCRIPTION	SYMBOL
THE TECHNICAL MATERIEL CORP. MAMARONECK, NEW YORK			
STOCK SIZE			
CASE AND COVER			
ASSEMBLY			
C.D.D. 4/1/53			
TYPE & TEMPER		DRAWN	ELEC. DES. APP. MECH. DES. APP.
HEAT TREAT. SPEC.		CHECKED	FINAL APPROVAL
FINISH & SPEC. NO.		A-234 F	

A-234 F