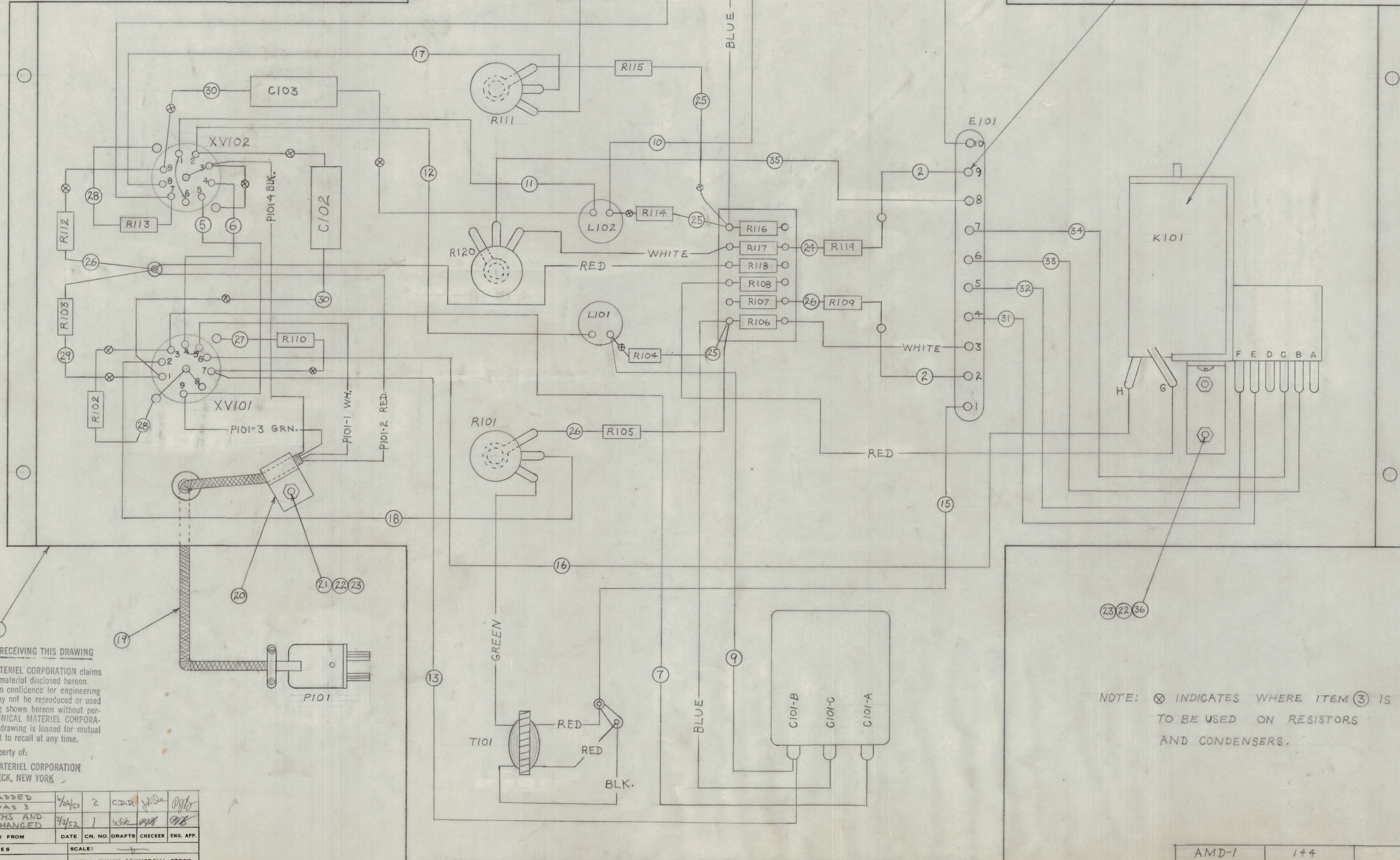
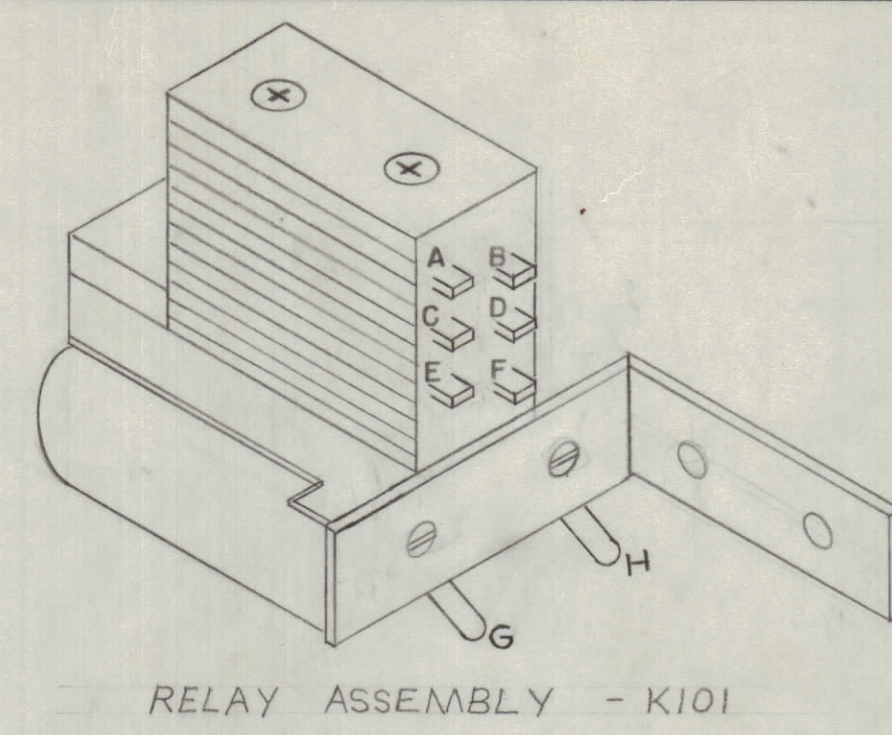
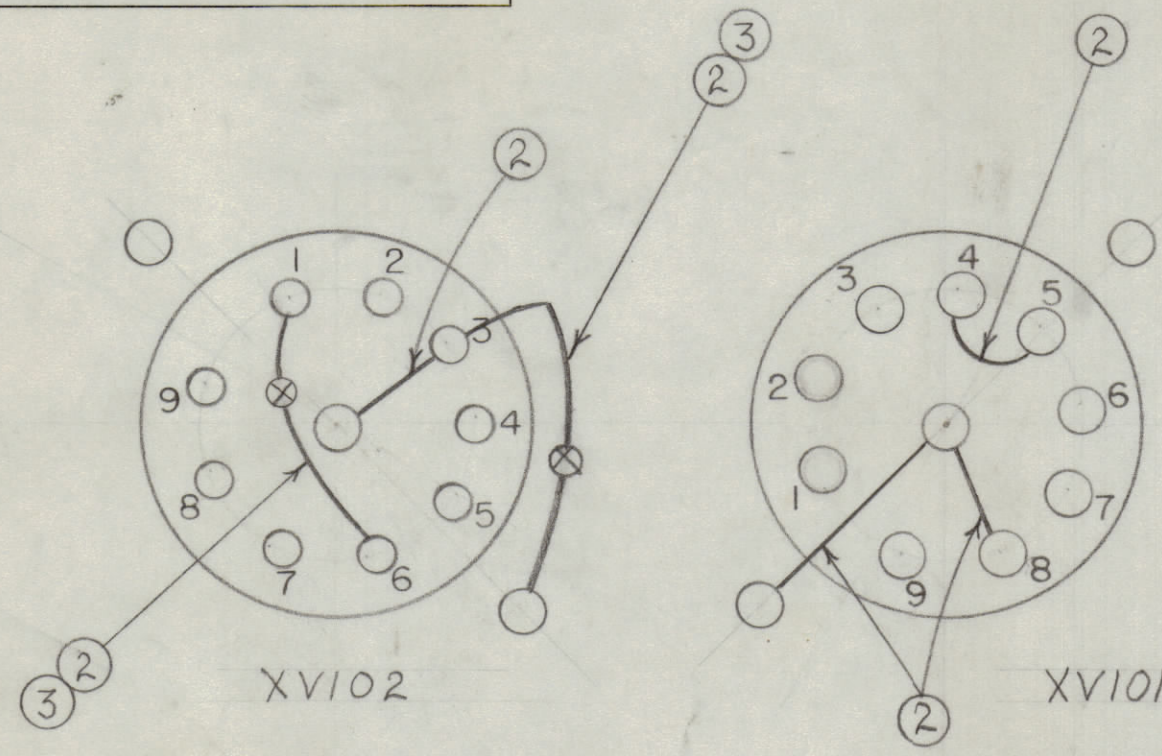


IF IT IS FOUND DESIRABLE TO CHANGE ANY TOLERANCE OR OTHER DETAIL SPECIFIED ON THIS DRAWING NOTIFY THE PURCHASER PROMPTLY.
MAXIMUM ALLOWABLE TOLERANCES HAVE BEEN DETERMINED AND DEVIATIONS WILL BE CAUSE FOR REJECTION. REMOVE ALL BURRS AND SHARP EDGES

RELEASED



1	43	RC20GF124J	RESISTOR, FIXED 120K	R104
1	42	CK-119	SCHEMATIC DIAGRAM	
1	41	6T8	TUBE, ELECTRON	V102
2	40	TS-103-V02	SHIELD	
1	39	12AT7	TUBE, ELECTRON	V101
X	38	BS-100	SOLDER SOFT	
1	37	A-227	RELAY ASSEMBLY	K101
2	36	SCBS0632BN5	SCREW, MACHINE	
6 1/2	35	SR1R 3/8 (7) 22-U-99	CABLE (HOOK-UP) INSUL. STRANDED	
6	34	SR1R 3/8 (7) 22-U-99	CABLE (HOOK-UP) INSUL. STRANDED	
6	33	SR1R 3/8 (7) 22-U-44	" " " "	
6	32	SR1R 3/8 (7) 22-U-33	" " " "	
6	31	SR1R 3/8 (7) 22-U-77	CABLE (HOOK-UP) INSUL. STRANDED	
2	30	CN-100-3	CAPCITOR, FIXED	C102, C103
1	29	RC20GF104K	RESISTOR-FIXED COMP, 100K	R103
2	28	RC20GF152K	" " " 1500	R102, R113
1	27	RC20GF105K	" " " 1MEG	R110
3	26	RC20GF B23J	" " " 82K	R105, R112
2	25	RC20GF 154J	" " " 150K	R114, R115
1	24	RC20GF 683J	RESISTOR-FIXED COMP. 68K	R109, R119
3	23	NTH0632BCB	NUT, HEX.	

3	22	LWS06MRC	LOCKWASHER, SPRING TYPE	
1	21	SCBS0632BN7	SCREW, MACHINE	
1	20	CU-102-4	CLAMP - PLASTIC	
1	19	A-239	CABLE-PLUG ASSEMBLY	P101
7 1/2	18	SR1R 3/8 (7) 22-U-55	CABLE (HOOK-UP) INSULATED STRANDED	
6 1/2	17	SR1R 3/8 (7) 22-U-55	" " " "	
11 1/2	16	SR1R 3/8 (7) 22-U-66	" " " "	
6	15	SR1R 3/8 (7) 22-U-55	" " " "	
6	14	SR1R 3/8 (7) 22-U-55	" " " "	
8 1/2	13	SR1R 3/8 (7) 22-U-55	" " " "	
7	12	SR1R 3/8 (7) 22-U-33	" " " "	
6	11	SR1R 3/8 (7) 22-U-66	" " " "	
7	10	SR1R 3/8 (7) 22-U-99	" " " "	
7	9	SR1R 3/8 (7) 22-U-99	" " " "	
11	8	SR1R 3/8 (7) 22-U-44	" " " "	
11	7	SR1R 3/8 (7) 22-U-44	" " " "	
2 1/2	6	SR1R 3/8 (7) 22-U-11	" " " "	
4 1/2	5	SR1R 3/8 (7) 22-U-11	CABLE (HOOK-UP) INSULATED STRANDED	
	4		DELETED	
15	3	PX-104-6-034	INSULATION SLEEVING	
6	2	WL-100-7	WIRE-BUSS-BAR, TINNED	
1	1	A-205	MECHANICAL ASSEMBLY	

NOTE: ⊗ INDICATES WHERE ITEM ③ IS TO BE USED ON RESISTORS AND CONDENSERS.

NOTICE TO PERSONS RECEIVING THIS DRAWING

THE TECHNICAL MATERIEL CORPORATION claims proprietary right in the material disclosed hereon. This drawing is issued in confidence for engineering information only and may not be reproduced or used to manufacture anything shown hereon without permission from THE TECHNICAL MATERIEL CORPORATION to the user. This drawing is loaned for mutual assistance and is subject to recall at any time.

Property of:
THE TECHNICAL MATERIEL CORPORATION
MAMARONECK, NEW YORK

B	2	ITEM 43 ADDED	7/24/52	2	C.D.B.	J.H.S.	P.H.G.
1		ITEM 25 WAS 3					
A	1	WIRE LENGTHS AND LOCATION CHANGED	7/9/52	1	W.S.K.	P.H.G.	P.H.G.
ISSUE	ITEM	CHANGED FROM	DATE	CN. NO.	DRAFTS	CHECKER	ENG. APP.

ALL OTHERS	DEC. DIM. ±	DRILL, PUNCH, COMMERCIAL STOCK SIZES AND MANUFACTURERS TOLERANCES ARE NOT INCLUDED.
	FRAC. DIM. ±	
	ANGULAR DIM. ±	

AMD-1	144	11-5-52
MODEL	PROJECT NO.	ASSY. NO.
		DATE

REQ. ITEM	PART NO.	DESCRIPTION	SYMBOL
THE TECHNICAL MATERIEL CORP. MAMARONECK, NEW YORK MAIN ASSEMBLY			
STOCK SIZE		DRAWN: W.S.K. G.T.O. P.H.G.	
MATERIAL		ELEC. DES. APP. G.T.O.	
WEIGHT PER PC.		MECH. DES. APP. G.T.O.	
TYPE & TEMPER.		CHECKED: P.H.G. G.T.O.	
HEAT TREAT. SPEC.		FINAL APPROVAL	
FINISH & SPEC. NO.		A-231	