

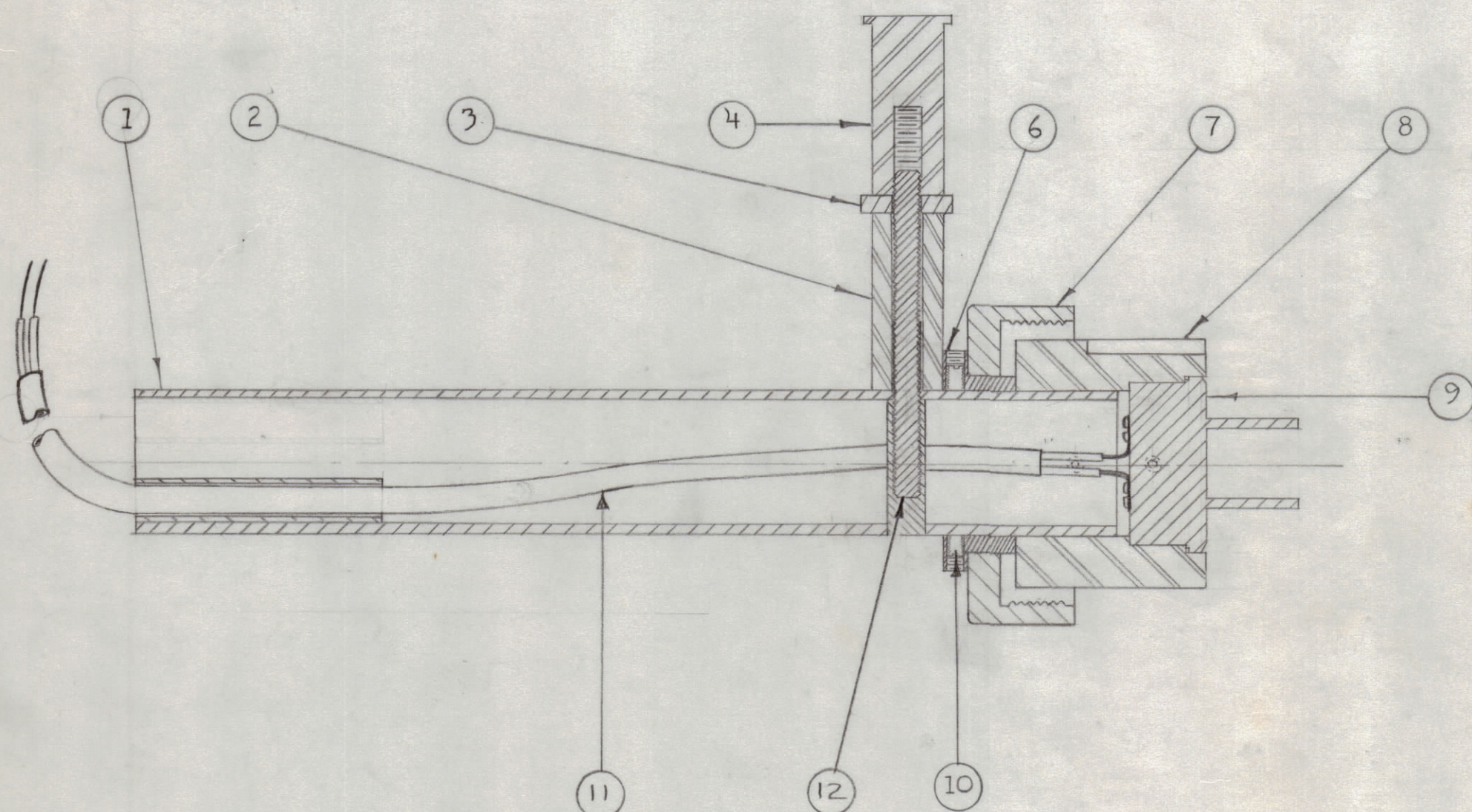
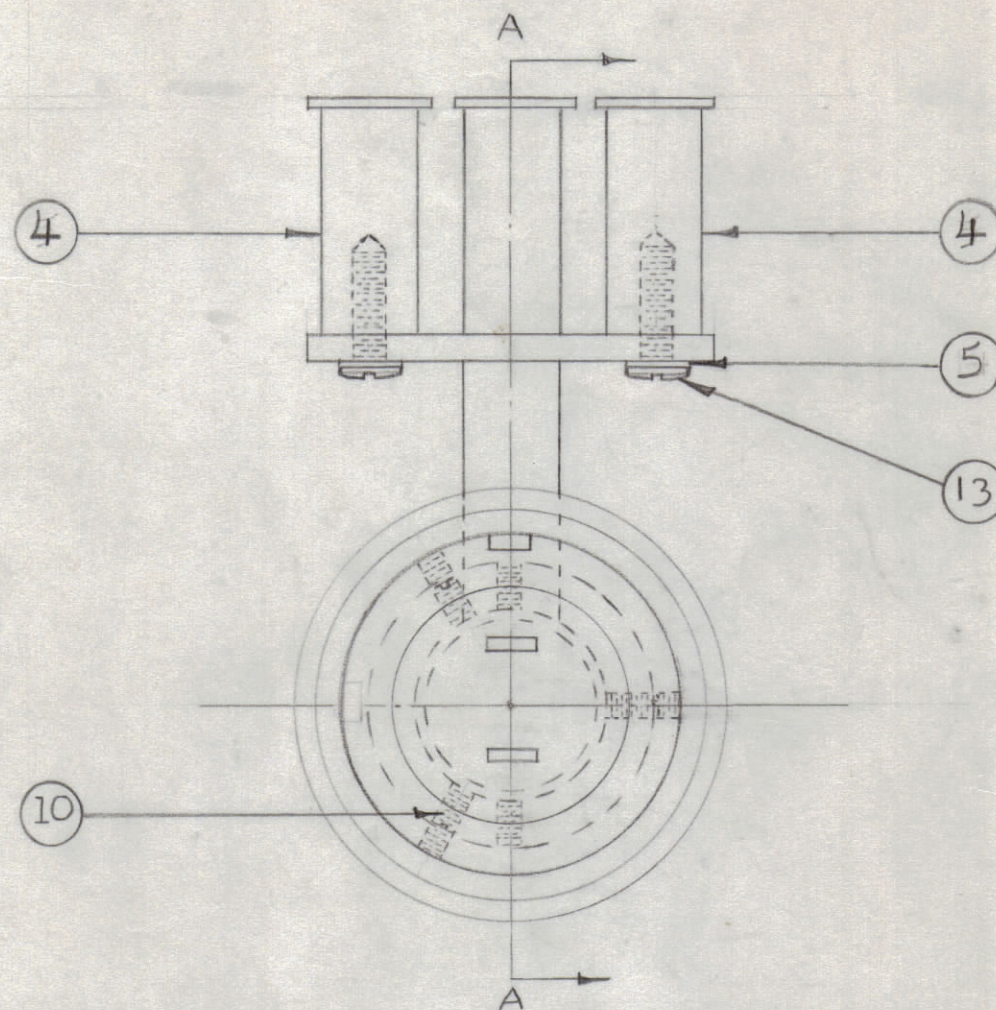
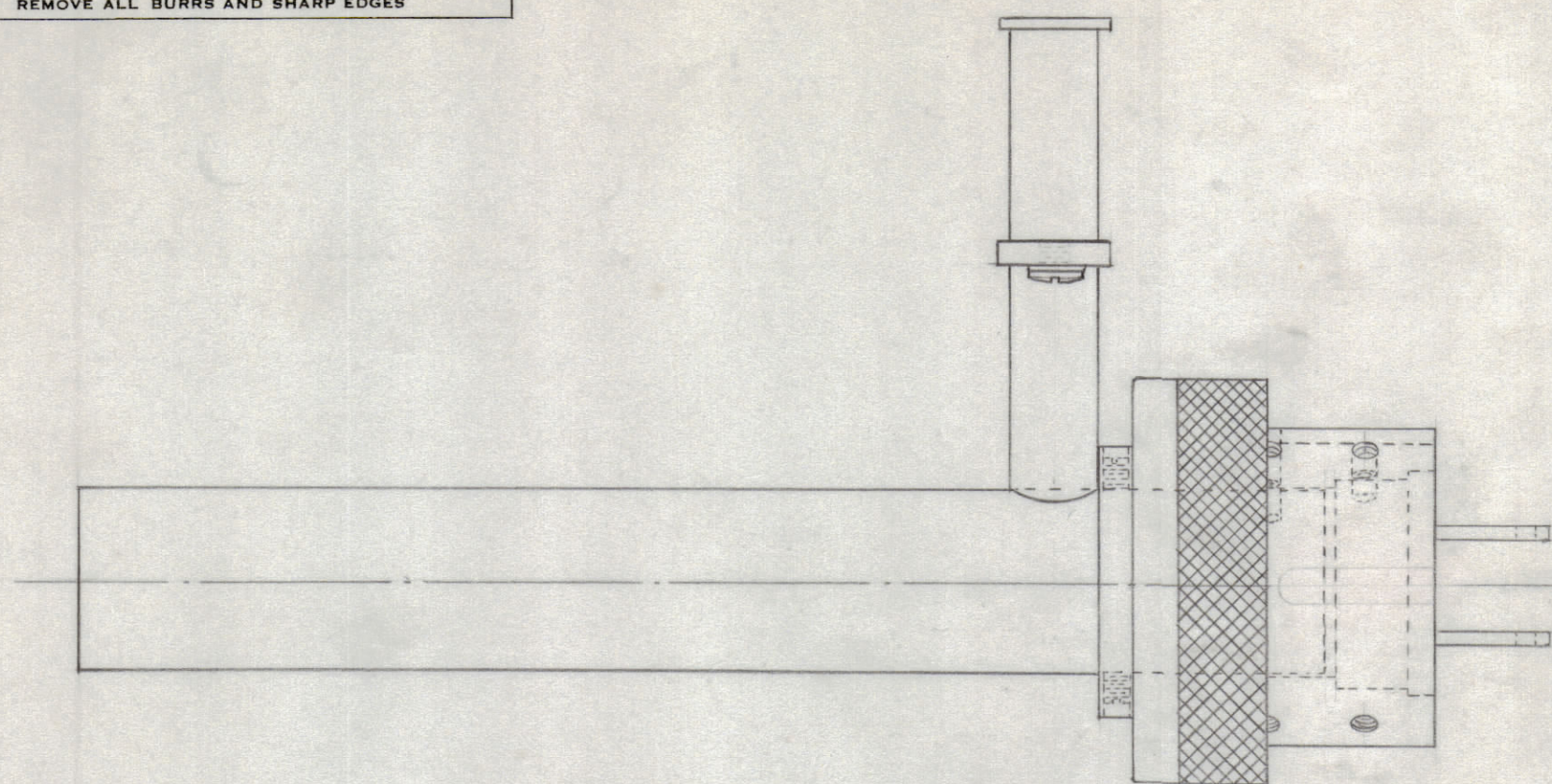
IF IT IS FOUND DESIRABLE TO CHANGE ANY TOLERANCE OR OTHER DETAIL SPECIFIED ON THIS DRAWING NOTIFY THE PURCHASER PROMPTLY.

MAXIMUM ALLOWABLE TOLERANCES HAVE BEEN DETERMINED AND DEVIATIONS WILL BE CAUSE FOR REJECTION. REMOVE ALL BURRS AND SHARP EDGES

NOTICE TO PERSONS RECEIVING THIS DRAWING

THE TECHNICAL MATERIEL CORPORATION claims proprietary right in the material disclosed hereon. This drawing is issued in confidence for engineering information only and may not be reproduced or used to manufacture anything shown hereon without permission from THE TECHNICAL MATERIEL CORPORATION to the user. This drawing is loaned for mutual assistance and is subject to recall at any time.

Property of:
THE TECHNICAL MATERIEL CORPORATION
MAMARONECK, NEW YORK



SHORT ENDS OF WIRE GO TO THE RECEPTACLE, LONG END TO THE MOTOR.

A-220 A

REQ.	ITEM	PART NO.	DESCRIPTION	SYMBOL
2	13	SCBS1032BC8	SCREW, MACHINE	
1	12	SM-115	THREADED ROD	
1	11	WI-110	MOTOR CABLE	
8	10	AN565D6-H3	SET SCREW	
1	9	PL-108	MALE PLUG	
1	8	PM-152	PLUG HOUSING	
1	7	NT-105	KNURLED NUT	
1	6	PM-153	POST RING	
2	5	LWS10LRC	LOCK WASHER, SPLIT	
3	4	SM-119	TAPE GUIDE	
1	3	PM-154	TAPE GUIDE SUPPORT	
1	2	PM-155	SPACER	
1	1	A-212	POST-ASS'Y.	

THE TECHNICAL MATERIEL CORP.		MAMARONECK, NEW YORK	
STAND ASSEMBLY			
STOCK SIZE			
MATERIAL	WEIGHT PER PC.		
TYPE & TEMPER	16 10-22-52		
HEAT TREAT. SPEC.	W.D.C.	ELEC. DES. APP. MECH. DES. APP.	
FINISH & SPEC. NO.	CHECKED	FINAL APPROVAL	
		A-220 A	

A	1	ITEM 11 WAS WI-108	8-24-51	1	C.D.D.	W.D.C.	
ISSUE	ITEM	CHANGED FROM	DATE	CN. NO.	DRAFTS	CHECKER	ENG. APP.
TOLERANCES							
SCALE: FULL SIZE							
ALL OTHERS				DEC. DIM. ± FRAC. DIM. ± ANGULAR DIM. ±			
				DRILL, PUNCH, COMMERCIAL STOCK SIZES AND MANUFACTURERS TOLERANCES ARE NOT INCLUDED.			

TWR-115	151	A-237	10-22-52
MODEL	PROJECT NO.	ASS'Y. NO.	DATE
USED ON			