

IF IT IS FOUND DESIRABLE TO CHANGE ANY TOLERANCE OR OTHER DETAIL SPECIFIED ON THIS DRAWING NOTIFY THE PURCHASER PROMPTLY.

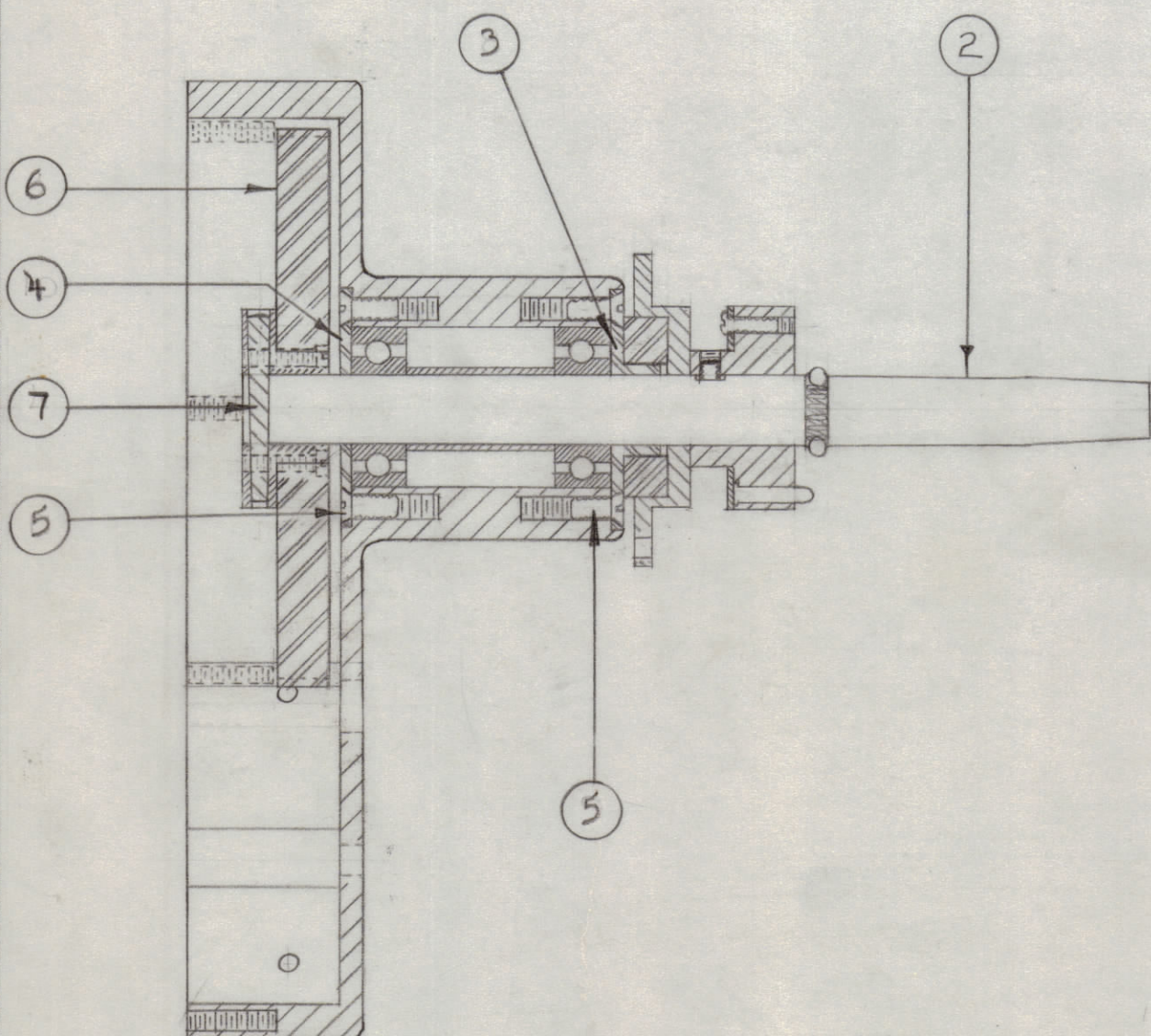
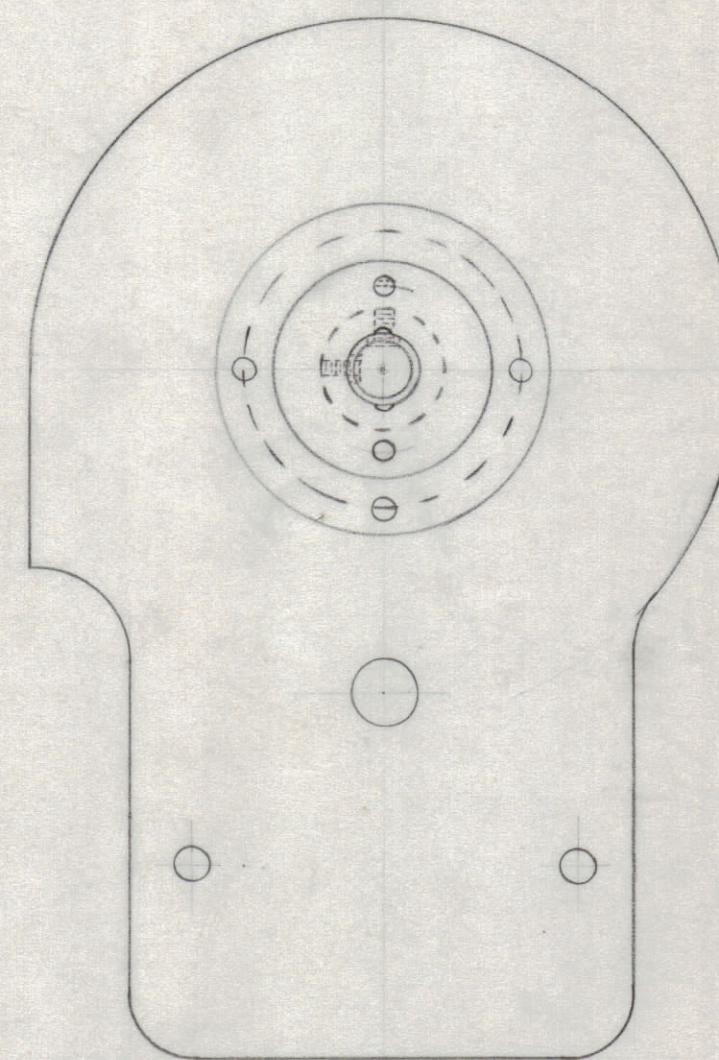
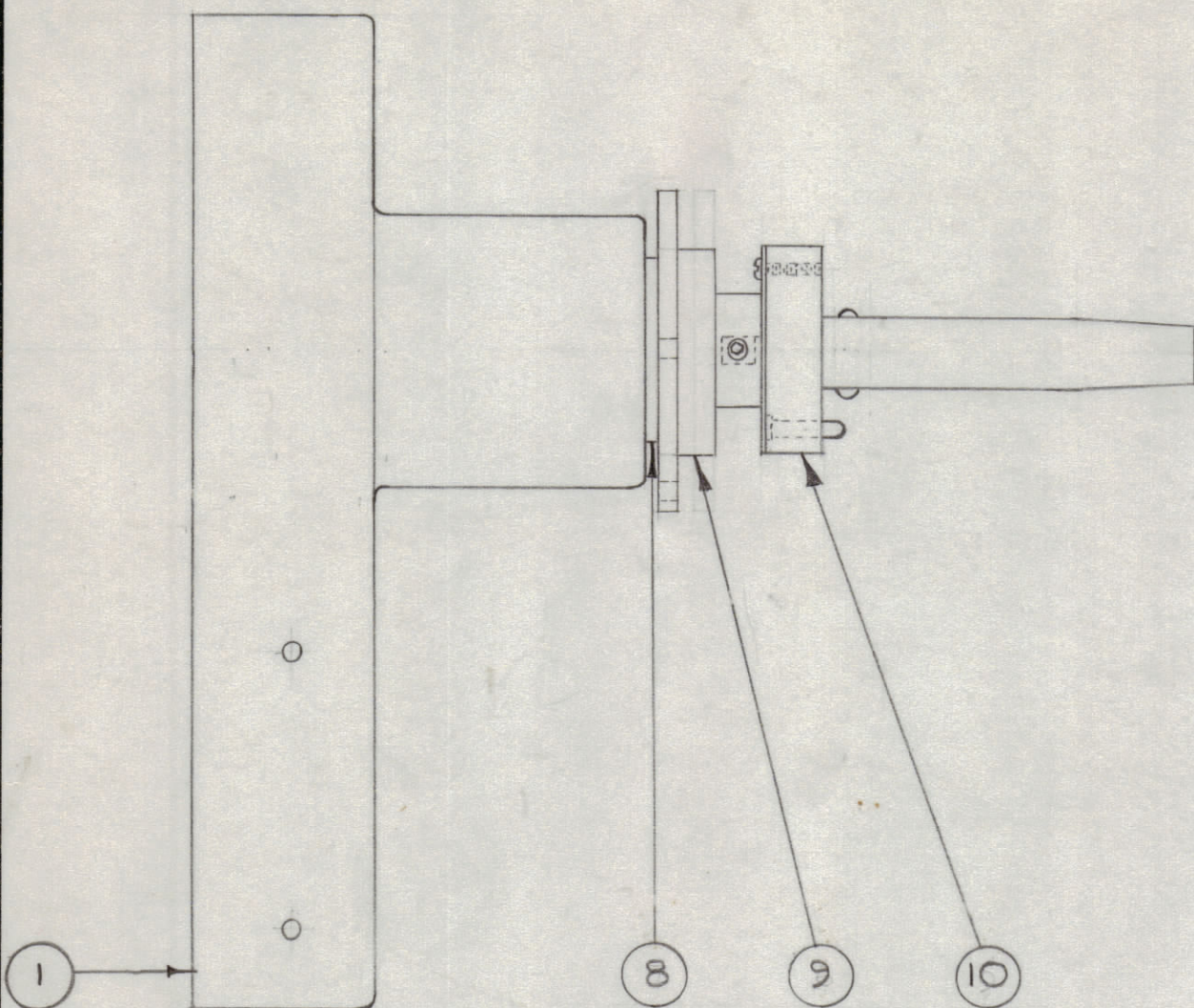
MAXIMUM ALLOWABLE TOLERANCES HAVE BEEN DETERMINED AND DEVIATIONS WILL BE CAUSE FOR REJECTION. REMOVE ALL BURRS AND SHARP EDGES

NOTICE TO PERSONS RECEIVING THIS DRAWING

THE TECHNICAL MATERIEL CORPORATION claims proprietary right in the material disclosed hereon. This drawing is issued in confidence for engineering information only and may not be reproduced or used to manufacture anything shown hereon without permission from THE TECHNICAL MATERIEL CORPORATION to the user. This drawing is loaned for mutual assistance and is subject to recall at any time.

Property of:

THE TECHNICAL MATERIEL CORPORATION  
MAMARONECK, NEW YORK



A-218

REQ. ITEM	PART NO.	DESCRIPTION	SYMBOL
1 10	A-223	PIN BUSHING ASS'Y.	
1 9	PM-148	GEAR SHAFT FLANGE	
1 8	RY-101	ELASTIC INSERT	
1 7	PN-101	TAPER PIN	
1 6	A-230	GEAR ASSEMBLY	
8 5	SCFS0632BC5	SCREW, MACH.	
1 4	PM-146	BEARING RETAINER	
1 3	PM-147	FLANGED BEARING RETAINER	
1 2	A-215	GEAR SHAFT - ASS'Y.	
1 1	PM-149	GEAR HOUSING	

STOCK SIZE		THE TECHNICAL MATERIEL CORP. MAMARONECK, NEW YORK	
MATERIAL		GEAR HOUSING	
WEIGHT PER PC.		ASSEMBLY	
TYPE & TEMPER		48 10-23-52	
HEAT TREAT. SPEC.		DRAWN	ELEC. DES. APP.
FINISH & SPEC. NO.		CHECKED	MECH. DES. APP.
		FINAL APPROVAL	
		A-218	

ISSUE	ITEM	CHANGED FROM	DATE	CN. NO.	DRAFTS	CHECKER	ENG. APP.
TOLERANCES							
ALL OTHERS				SCALE: FULL SIZE			
DEC. DIM. ±				DRILL, PUNCH, COMMERCIAL STOCK			
FRAC. DIM. ±				SIZES AND MANUFACTURERS			
ANGULAR DIM. ±				TOLERANCES ARE NOT INCLUDED.			

TWR-115	151	A-237	10-23-52
MODEL	PROJECT NO.	ASS'Y. NO.	DATE
USED ON			