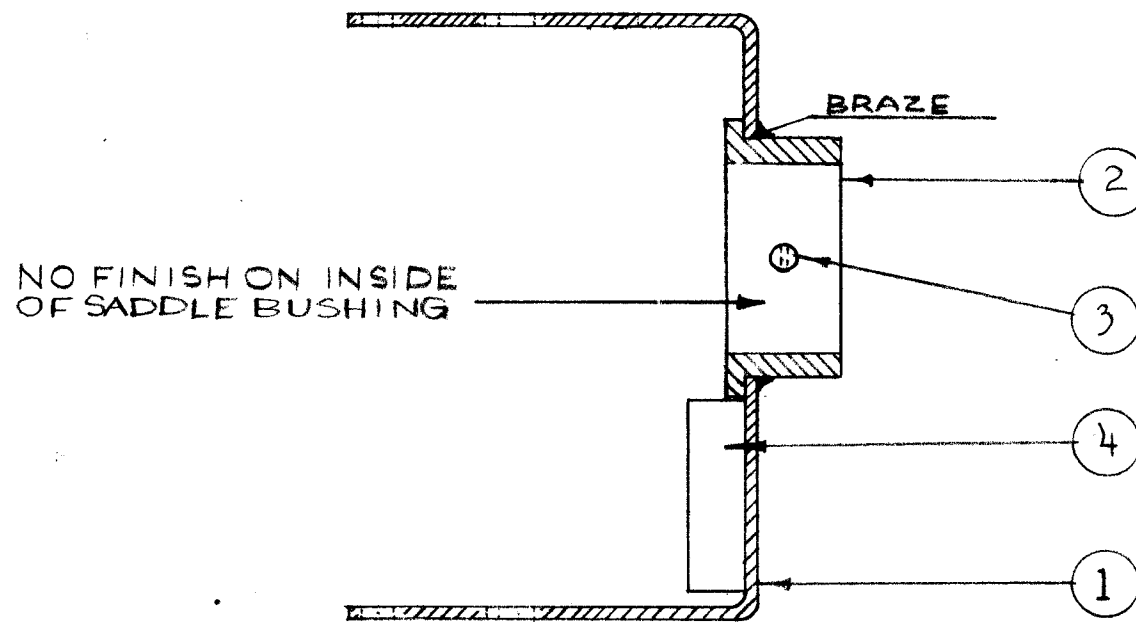
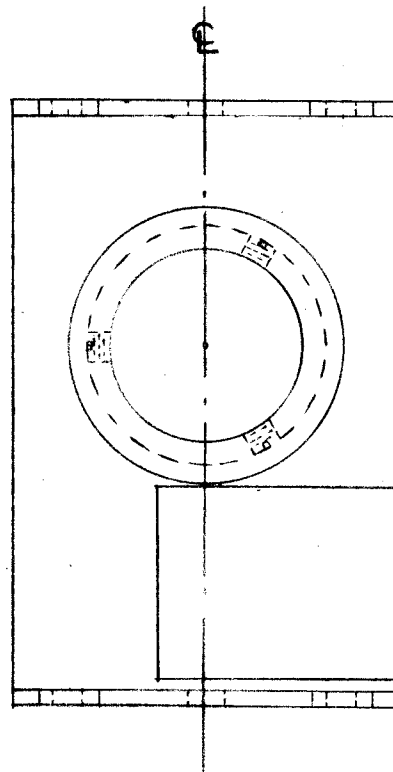


IF IT IS FOUND DESIRABLE TO CHANGE ANY TOLERANCE OR OTHER DETAIL SPECIFIED ON THIS DRAWING NOTIFY THE PURCHASER PROMPTLY.

MAXIMUM ALLOWABLE TOLERANCES HAVE BEEN DETERMINED AND DEVIATIONS WILL BE CAUSE FOR REJECTION. REMOVE ALL BURRS AND SHARP EDGES

A-216

CEMENT ITEM ④ TO ITEM ① WITH ITEM ⑤ AFTER PAINTING



NOTE:
 1. S-404 YELLOW IRIDITE
 2. GREY WRINKLE PAINT (S-151) BEFORE CEMENTING ITEM ④ TO ITEM ① AND BEFORE INSTALLING ITEM # ③

REQ.	ITEM	PART NO.	DESCRIPTION	SYMBOL
X	5	GL-101-1	CEMENT - PLOIBOND	
1	4	RY-100	SNUBBER	
3	3	AN565 D63	SET SCREW	
1	2	PM-141	SADDLE BUSHING	
1	1	MS-160	SADDLE FRAME	
<div style="text-align: center;">//</div> STOCK SIZE			THE TECHNICAL MATERIEL CORP. MAMARONECK. NEW YORK	
<div style="text-align: center;">//</div> MATERIAL WEIGHT PER PC.				
<div style="text-align: center;">//</div> TYPE & TEMPER			16 10-23-52	
<div style="text-align: center;">//</div> HEAT TREAT. SPEC.			DRAWN <i>WDC 11/8</i>	
SEE NOTE			CHECKED	
FINISH & SPEC. NO.			FINAL APPROVAL	
			A-216	

A	1	S-404 WAS S-101	12-10-59	1001	AB	EMN	
ISSUE	ITEM	CHANGED FROM	DATE	CN. NO.	DRAFTS	CHECKER	ENG. APP.
TOLERANCES			SCALE: FULL SIZE				
ALL OTHERS	DEC. DIM. ±	FRAC. DIM. ±	ANGULAR DIM. ±	DRILL, PUNCH, COMMERCIAL STOCK SIZES AND MANUFACTURERS TOLERANCES ARE NOT INCLUDED.			

TWR-115	151	A-237	10-23-52
MODEL	PROJECT NO.	ASS'Y. NO.	DATE
USED ON			