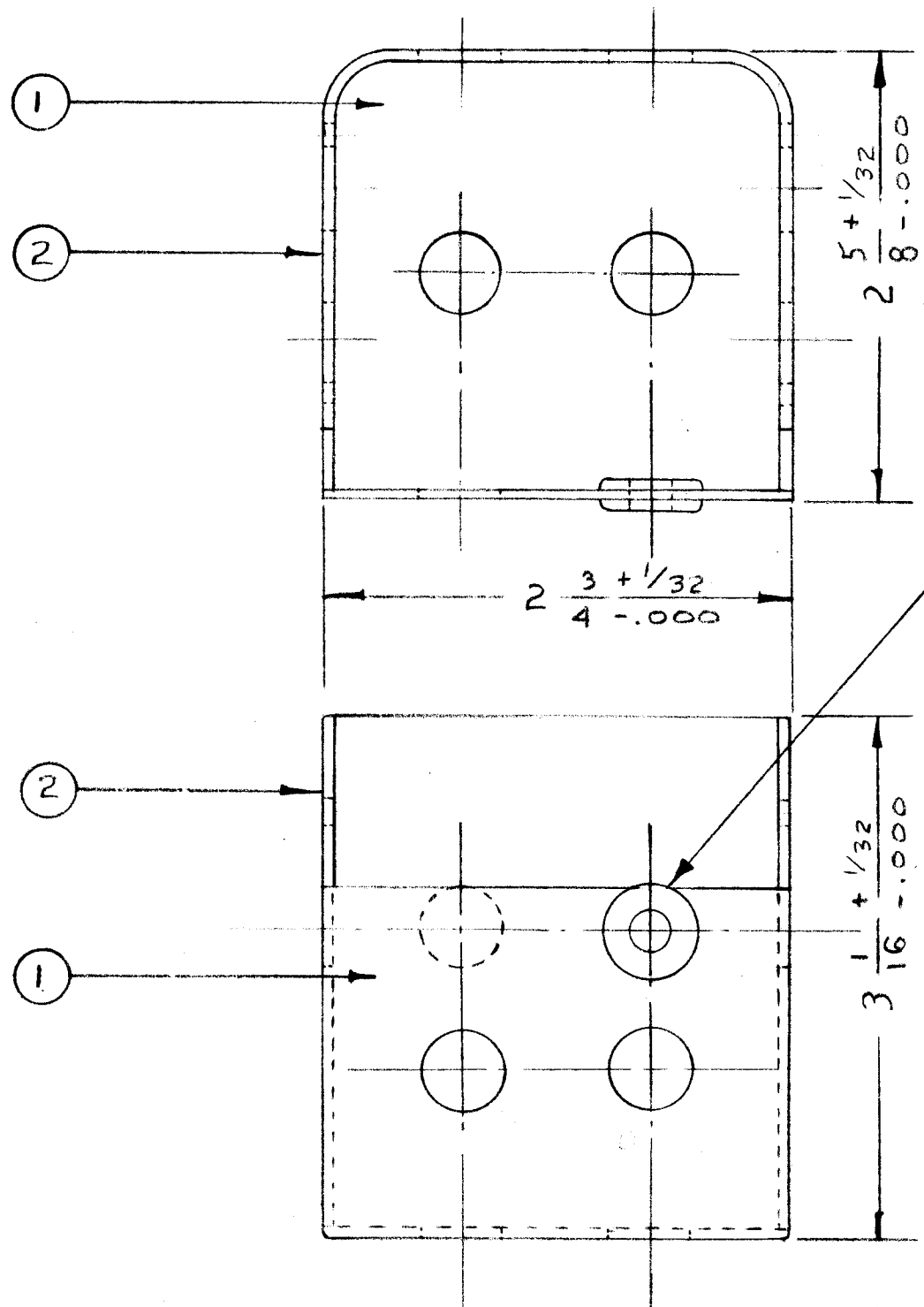


IF IT IS FOUND DESIRABLE TO CHANGE ANY TOLERANCE OR OTHER DETAIL SPECIFIED ON THIS DRAWING NOTIFY THE PURCHASER PROMPTLY.

MAXIMUM ALLOWABLE TOLERANCES HAVE BEEN DETERMINED AND DEVIATIONS WILL BE CAUSE FOR REJECTION. REMOVE ALL BURRS AND SHARP EDGES

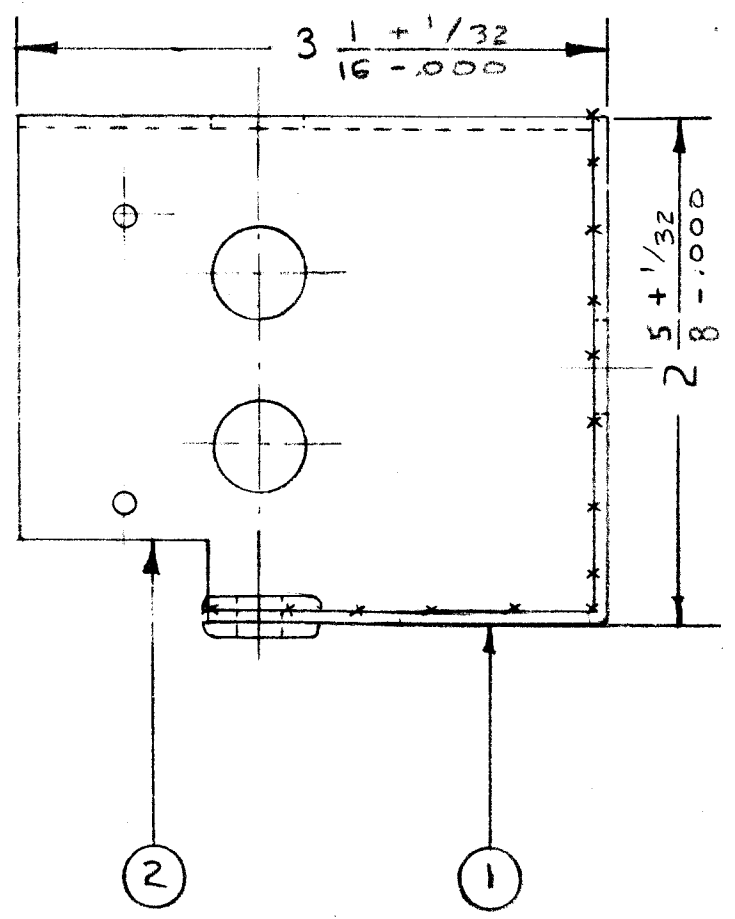
A-214 A



3 INSTALL AFTER PAINTING

X DENOTES SEAM WELD

NOTE:
1. S-404 YELLOW IRIDITE
2. S-151 (GREY WRINKLE PAINT.)



REQ.	ITEM	PART NO.	DESCRIPTION	SYMBOL
1	3	EY-102-13	GROMMET, ELASTIC	
1	2	MS-159	BOTTOM COVER	
1	1	MS-158	TOP COVER	
—//—			THE TECHNICAL MATERIEL CORP.	
STOCK SIZE			MAMARONECK. NEW YORK	
—//—			MOTOR HOUSING	
MATERIAL			ASSEMBLY	
—//—			DRAWN <i>J. Gabry</i>	
TYPE & TEMPER			ELEC. DES. APP. <i>EMN</i>	
—//—			MECH. DES. APP. <i>EMN</i>	
HEAT TREAT. SPEC.			CHECKED <i>AD</i> 11/14/52	
SEE NOTE			FINAL APPROVAL <i>EMN</i>	
FINISH & SPEC. NO.			A-214 A	

ISSUE	ITEM	CHANGED FROM	DATE	CN. NO.	DRAFTS	CHECKER	ENG. APP.
A	1	S-404 WAS S-101	12/10/59	1001	AB		EMN

TOLERANCES SCALE: FULL SIZE

ALL OTHERS	DEC. DIM. ± FRAC. DIM. ± 1/64 ANGULAR DIM. ±	DRILL, PUNCH, COMMERCIAL STOCK SIZES AND MANUFACTURERS TOLERANCES ARE NOT INCLUDED.
------------	--	---

TWR-115	151	A-237	9-24-52
MODEL	PROJECT NO.	ASS'Y. NO.	DATE

USED ON