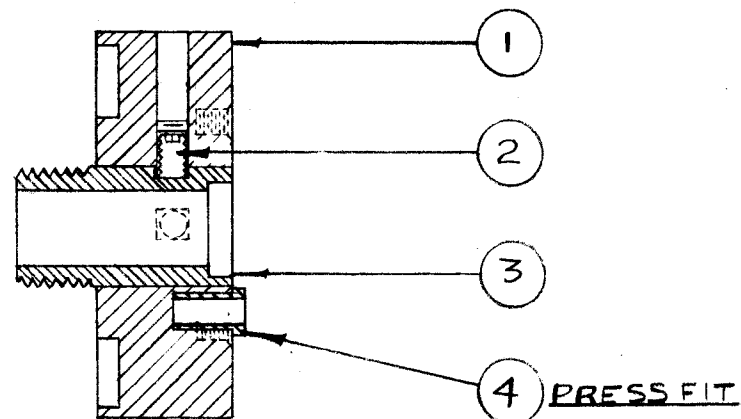
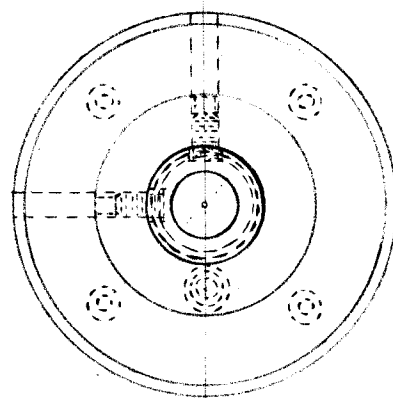


IF IT IS FOUND DESIRABLE TO CHANGE ANY TOLERANCE OR OTHER DETAIL SPECIFIED ON THIS DRAWING NOTIFY THE PURCHASER PROMPTLY.

MAXIMUM ALLOWABLE TOLERANCES HAVE BEEN DETERMINED AND DEVIATIONS WILL BE CAUSE FOR REJECTION. REMOVE ALL BURRS AND SHARP EDGES

A-213



1	4	PM-138	PULLEY PIN	
1	3	SM-117	PULLEY BUSHING	
2	2	AN565D6-H4	SET SCREW	
1	1	PM-137	TAPE PULLEY	
REQ.	ITEM	PART NO.	DESCRIPTION	SYMBOL
//			THE TECHNICAL MATERIEL CORP. MAMARONECK. NEW YORK	
//			TAPE PULLEY - ASSEMBLY	
//			46 10-20-52	P96
//			DRAWN	ELEC. DES. APP.
//			10-20-52	//
//			CHECKED	FINAL APPROVAL
//				A-213
//				

ISSUE	ITEM	CHANGED FROM	DATE	CN. NO.	DRAFTS	CHECKER	ENG. APP.
TOLERANCES		SCALE: FULL SIZE					
ALL OTHERS	DEC. DIM. ± FRAC. DIM. ± ANGULAR DIM. ±	DRILL, PUNCH, COMMERCIAL STOCK SIZES AND MANUFACTURERS TOLERANCES ARE NOT INCLUDED.					

TWR-115	151	A-222	10-20-52
MODEL	PROJECT NO.	ASS'Y. NO.	DATE
USED ON			