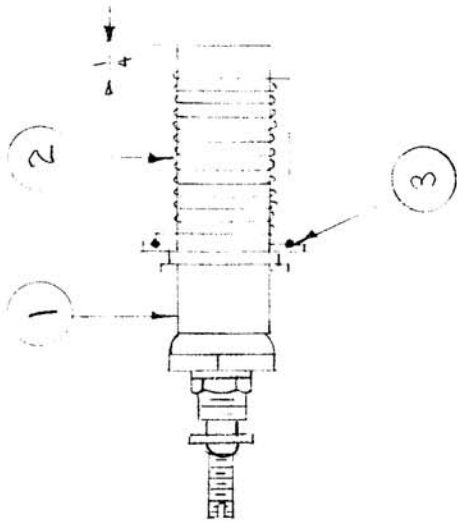


IF IT IS FOUND DESIRABLE TO CHANGE ANY TOLERANCE OR OTHER DETAIL SPECIFIED ON THIS DRAWING NOTIFY THE PURCHASER PROMPTLY.

MAXIMUM ALLOWABLE TOLERANCES HAVE BEEN DETERMINED AND DEVIATIONS WILL BE CAUSE FOR REJECTION. REMOVE ALL BURRS AND SHARP EDGES



WINDING DATA: 51 TURNS #32 D.S.C. SOLDER ENDS AS SHOWN. PAINT WITH 85U, INSULALEX.

ELECTRICAL DATA: MEASURED AT 25MC  
 L max. = 36.2µh, Q = 100  
 L min. = 20.2µh, Q = 105  
 TOLERANCE: L max. = ±1.6µh  
 L min. = ±1.0µh  
 Q > 85

RELEASED

A-204

USED ON

|       |             |            |          |
|-------|-------------|------------|----------|
| MODEL | PROJECT NO. | ASS'Y. NO. | DATE     |
| LFA   | 109         | A-203      | 10-23-51 |

|   |   |           |                      |  |  |
|---|---|-----------|----------------------|--|--|
| X | 4 | GL-104-2  | INSULEX - 85U        |  |  |
| X | 3 | BS-100    | SOLDER, SOFT         |  |  |
| X | 2 | WI-107-13 | WIRE #32 D.S.C.      |  |  |
| 1 | 1 | CF-104    | COIL FORM, SLUGTUNED |  |  |

|                    |          |                              |        |
|--------------------|----------|------------------------------|--------|
| REQ. ITEM          | PART NO. | DESCRIPTION                  | SYMBOL |
|                    | #        |                              |        |
| STOCK SIZE         |          | THE TECHNICAL MATERIEL CORP. |        |
|                    |          | MAMARONECK, NEW YORK         |        |
| MATERIAL           |          | COIL, R.F.                   |        |
| WEIGHT PER PC.     |          | SUB ASSEMBLY                 |        |
| TYPE & TEMPER      |          | C.D.D. 9-19-51               |        |
|                    |          | DRAWN A.J. To                |        |
|                    |          | ELEC. DES. APP. MTS          |        |
|                    |          | MECH. DES. APP. [Signature]  |        |
| HEAT TREAT. SPEC.  |          | CHECKED                      |        |
|                    |          | FINAL APPROVAL               |        |
| FINISH & SPEC. NO. |          | A-204                        |        |

|   |              |      |         |        |         |           |
|---|--------------|------|---------|--------|---------|-----------|
| ISSUE ITEM  | CHANGED FROM | DATE | CN. NO. | DRAFTS | CHECKER | ENG. APP. |
| TOLERANCES  |              |      |         |        |         |           |
| SCALE   |              |      |         |        |         |           |
| DEC. DIM. ±   |              |      |         |        |         |           |
| FRAC. DIM. ±  |              |      |         |        |         |           |
| ANGULAR DIM. ±  |              |      |         |        |         |           |
| DRILL, PUNCH, COMMERCIAL STOCK SIZES AND MANUFACTURERS TOLERANCES ARE NOT INCLUDED. |              |      |         |        |         |           |