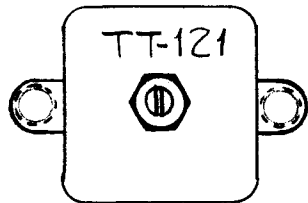
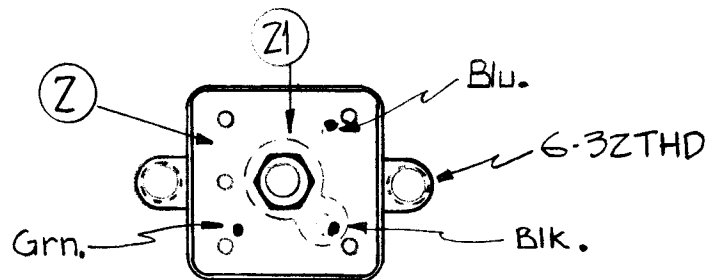
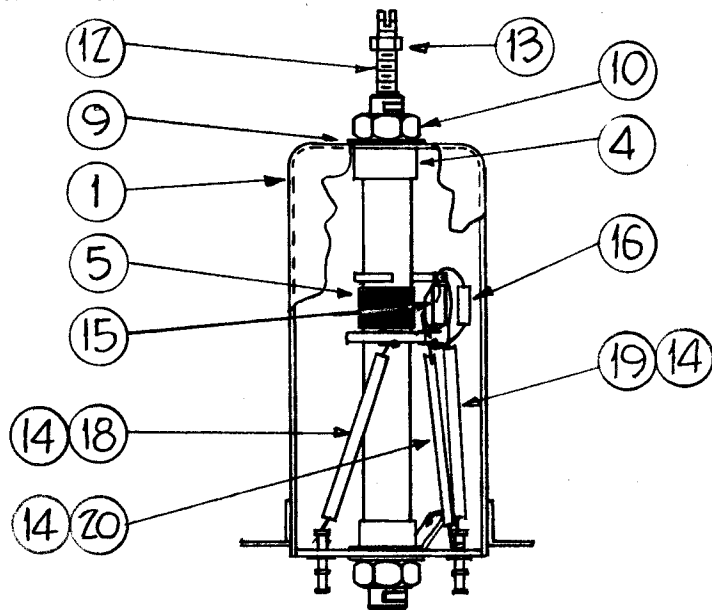


A1999 D

STAMP CAN AS SHOWN 1/8 HIGH BLACK
GOTHIC NOTE - STAMP TMC INSIGNIA
& APPROVAL ON SIDE OF CAN.



CEMENT COIL FORM TO BUSHING WITH GL-103.



COLOR CODE TERMINAL BOARD AS SHOWN.

WINDING DATA

1. Start winding 1-1/8 from end of form.
2. Tap winding at 11 turns, then wind additional 11 turns.
3. Keep all leads approximately 2" long.
4. Stake leads to coil form with GL-103.
5. Assemble ring and collar terminals (item 8,17) on form as shown, and stake with GL-104-2.
6. Fasten ends of WI-123-28 to ring and collar terminals.
7. Bake unit for 1/2 hour at 215° F.
8. Coat winding, ring and collar terminals with GL-104-2.
9. Bake hard for 1/2 hour at 215° F.
10. Test as shown in test data.
11. Assemble as shown.

TEST DATA (W/OUT CORE)

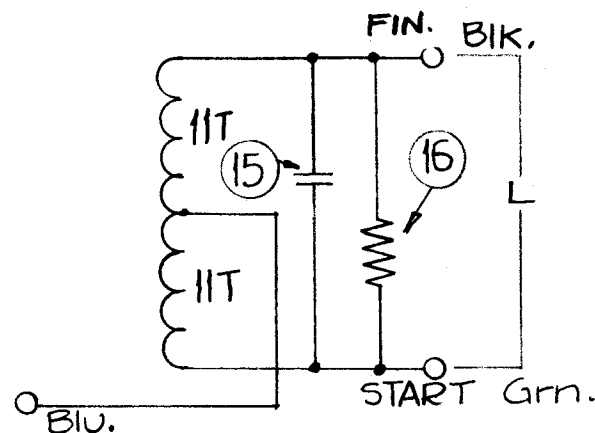
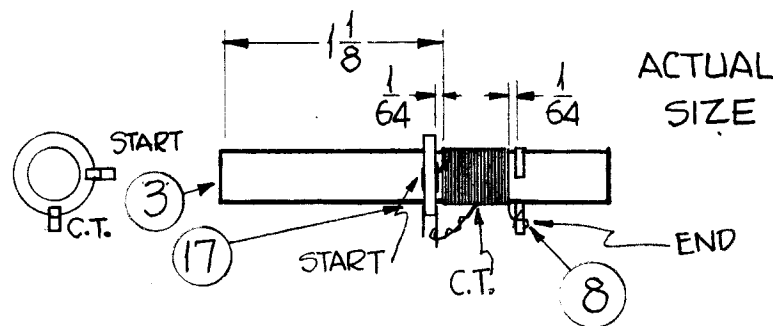
$L_1 = 2 \text{ uh } \pm 10\%$

$Q = 70 \text{ or Greater}$

$\text{Freq} = 7.9 \text{ mcs}$

Use Boonton Radio Corporation Q Meter Model 160A or Equivalent.

REQ.	ITEM	PART NO.	DESCRIPTION	SYMBOL
1	21	TE-104-3	Lug	
X	20	PX-104-1-.034	Insulation, Sleeving	Black
X	19	PX-104-6-.034	Insulation, Sleeving	Blue
X	18	PX-104-4-.034	Insulation, Sleeving	Green
1	17	TE-181-2A	Terminal, Collar 1/4 I.D.	
1	16	RC20GF682K	Resistor, Fixed	
1	15	CM15C270J	Capacitor, Fixed	
X	14	WL-100-7	Wire, Buss-Bar	
1	13	NTH0348BN6	Nut, Hex	
1	12	CI-116-5	Core Tuning	Red
X	11	BS-100	Solder, Soft	
2	10	NTH0832BN10	Nut, Hex	
2	9	LWI08MRN	Lockwasher	
1	8	TE-153-2	Terminal Ring	
X	7	GL-104-2	Insulex	
X	6	GL-103	Cement, Duco	
X	5	WI-123-28	Wire, Enamelled	
2	4	SM-140-2	Bushing, Coil Mounting	
1	3	CF-122-1.93	Coil Form 1/4 O.D.	
1	2	PX-586-1	Terminal Board	
1	1	A-1950-1	Can Assembly	



SYM	DESCRIPTION	DATE	CH. NO.	DRAFTS	CHECKER	ENG. APP.
D	Q=70 WAS Q=90	10/17/63	10223	SA	WMT	WMT
C	ITEM 13 WAS NTH0348BN16	7-11-61	5227	G.D.L	WMT	WMT
B	ITEM 12 WAS CI-116-6	12/24/60	3796	WMT	WMT	WMT
A	ITEM 3 WAS CF-122-2.0	10-31-60	3350	WMT	WMT	WMT

UNLESS OTHERWISE SPECIFIED:
DIMENSIONS ARE IN INCHES
TOLERANCES ON FRACTIONS ± 1/64 DECIMALS ± .005 ANGLES ± 1/20

SCALE:
MAXIMUM ALLOWABLE TOLERANCES HAVE BEEN DETERMINED AND ANY DEVIATIONS WILL BE CAUSE FOR REJECTION.
REMOVE ALL BURRS AND SHARP EDGES

REQ. PER UNIT	MODEL	SECTION	ASS'Y. NO.	DATE
1	CHG-1		I.F.	10-17-60
USED ON				

REQ.	ITEM	PART NO.	DESCRIPTION	SYMBOL
THE TECHNICAL MATERIEL CORP. MAMARONECK, NEW YORK				
STOCK SIZE				
MATERIAL				
TT-121 TRANSFORMER ASSY 15MCS TRANSFORMER, GAUGGRID				
TYPE & TEMPER		HEAT TREAT. SPEC.	DRAWN	CHECKER
FINISH & SPEC. NO.		ELEC. DES. APP.	MECH. DES. APP.	FINAL APPROVAL

D.P. M...
A.R.F.
A1999 D