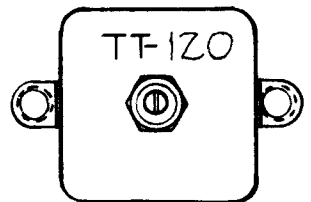
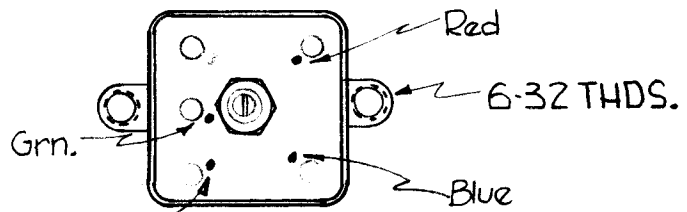
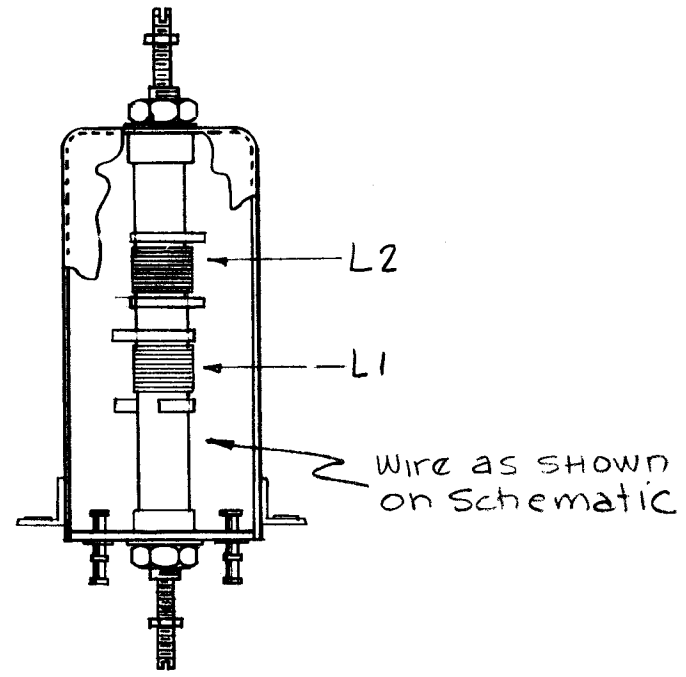


A-1998

STAMP CAN AS SHOWN 1/8 HIGH BLACK GOTHIC. NOTE ~ STAMP TMC IN SIGNIA & APPROVAL ON SIDE OF CAN.



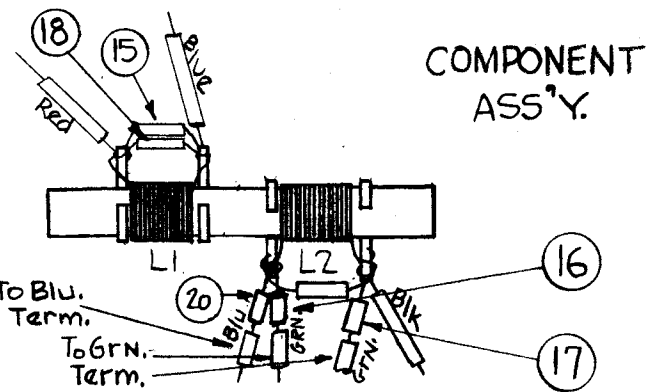
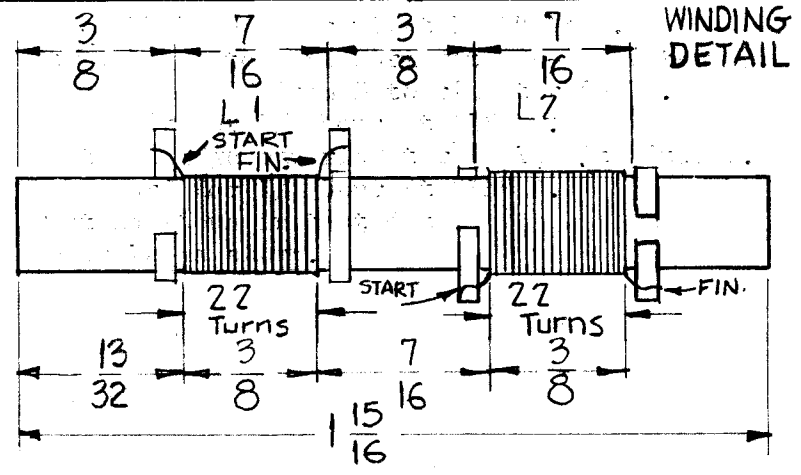
CEMENT COIL FORM TO BUSHING WITH GL-103



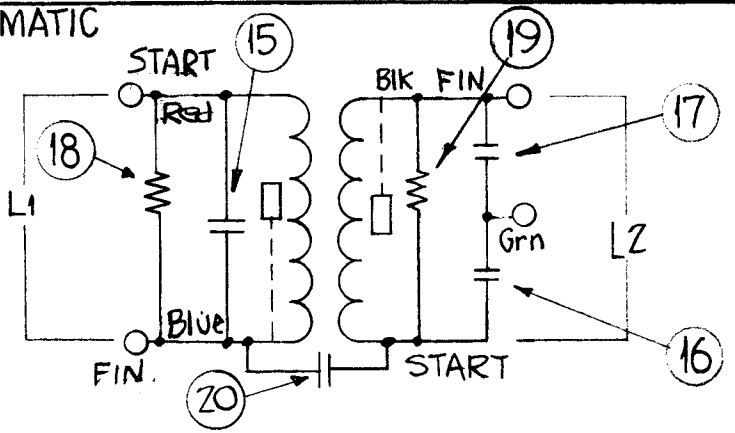
COLOR CODE FOR TERMINAL BOARD AS SHOWN

WINDING DATA

1. Assemble Ring Terminals on form as shown and stake with GL-104-2 (Item 7).
2. Wind Coils as specified, staking and coating with GL-104-2.
3. Bake until hard for 1/2 hour at 215° F.
4. Test and Assemble as shown.



SCHEMATIC



TEST DATA (W/OUT CORE)

$L_1 = L_2 = 2 \text{ uh } \pm 10\%$

$Q = 55 \text{ or Greater}$

$\text{Freq} = 7.9 \text{ mcs}$

Use Boonton Radio Corporation Q Meter Model 160A or Equivalent.

X	24	PX-104-6-.034	Sleeving, Insulation	Blue
X	23	PX-104-4-.034	Sleeving, Insulation	Green
X	22	PX-104-3-.034	Sleeving, Insulation	Red
X	21	PX-104-1-.034	Sleeving, Insulation	Black
1	20	CM15B050M	Capacitor, Fixed	
1	19	RC20GF123K	Resistor, Fixed	
1	18	RC20GF472K	Resistor, Fixed	
1	17	CM15C391J	Capacitor, Fixed	
1	16	CM15C390J	Capacitor, Fixed	
1	15	CM15C270J	Capacitor, Fixed	
X	14	WL-100-7	Wire, Buss-Bar	
2	13	NTH0348BN6	Nut, Hex	
2	12	CI-116-5	Core Tuning	Red
X	11	BS-100	Solder, Soft	
2	10	NTH0832BN10	Nut, Hex	
2	9	LWI08MRN	Lockwasher	
4	8	TE-153-2	Terminal Ring	
X	7	GL-104-2	Insulex	
	6	Deleted		
X	5	WI-123-28	Wire	
2	4	SM-140-2	Bushing, Coil Mounting	
1	3	CF-122-1.93	Coil Form 1/4 O.D.	
1	2	PX-586-1	Terminal Board	
1	1	A-1950-1	Can Assembly	

F	"Q" WAS 90 ON TEST DATA CHART	9-19-61	5578	LL	ab	of
E	ITEM 13 WAS NTH0348BN10	7-11-61	5227	G.D.L	OK	of
D	ITEM 6 DELETED; WINDING DATA SIMPLIFIED COMPONENT ASSY ADDED; WINDING POSITIONS ADDED	3/8/61	4345	DM	OK	of
C	ITEM 12 WAS CI-116-6 ITEM 3 WAS CF-122-1.93	12/21/60	3795	DM	file	of
B	on Schematic L1, (Blue, END), (Red, Start) Reversed	11-29-60	3604	DM	OK	of
A	2- ITEM 20 WAS CM15C050J 1- ITEM 14 WAS WI-100-7	10-31-60	3350	MS	file	C.H.T.
SYM	DESCRIPTION	DATE	CH. NO.	DRAFTS	CHECKER	ENG. APP.

UNLESS OTHERWISE SPECIFIED:
DIMENSIONS ARE IN INCHES
TOLERANCES ON FRACTIONS ± 1/64 DECIMALS ± .005 ANGLES ± 1/2°

SCALE:
MAXIMUM ALLOWABLE TOLERANCES HAVE BEEN DETERMINED AND ANY DEVIATIONS WILL BE CAUSE FOR REJECTION.
REMOVE ALL BURRS AND SHARP EDGES

1	CHG-1	I.F.	10-17-60
REQ. PER UNIT	MODEL	SECTION	ASS'Y. NO.
			DATE
			USED ON

REQ.	ITEM	PART NO.	DESCRIPTION	SYMBOL
THE TECHNICAL MATERIEL CORP. MAMARONECK, NEW YORK				
TT-120 TRANSFORMER ASS'Y 14.25 - 16.25 mc OUTPUT				
MATERIAL				
TYPE & TEMPER HEAT TREAT. SPEC. DRAWN CHECKER FINAL APPROVAL				
FINISH & SPEC. NO. ELEC. DES. APP. MECH. DES. APP.				
				A-1998
				F