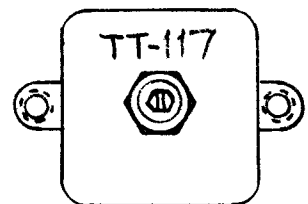
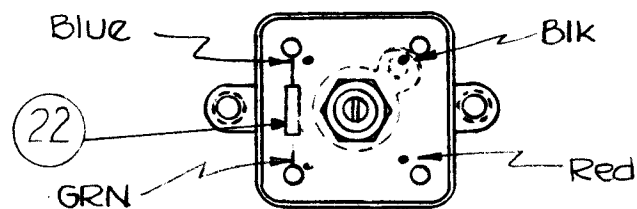
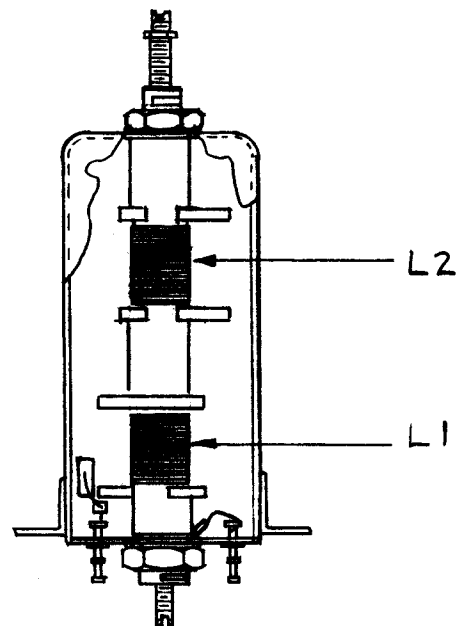


A-1994

STAMP CAN AS SHOWN 1/8 HIGH BLACK GOTHIC. NOTE ~ STAMP T.M.C. INSIGNIA & APPROVAL ON SIDE OF CAN.



CEMENT COIL FORM TO BUSHING WITH GL-103.

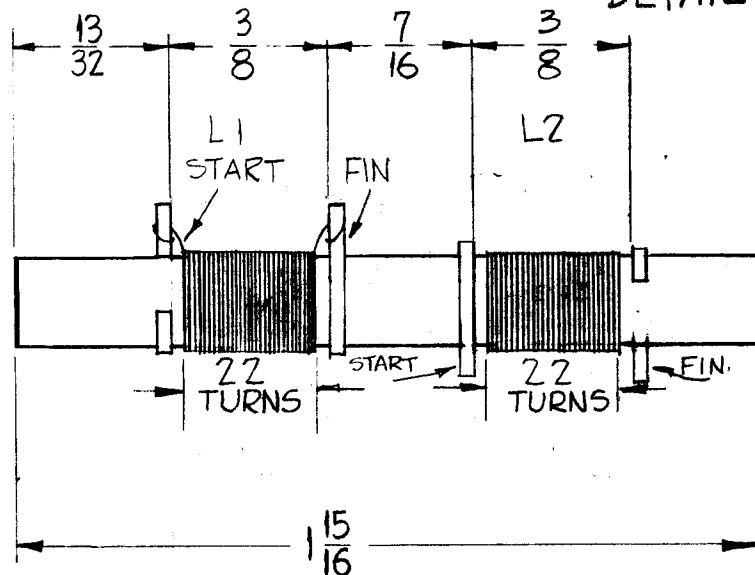


COLOR CODE FOR TERMINAL BOARD AS SHOWN

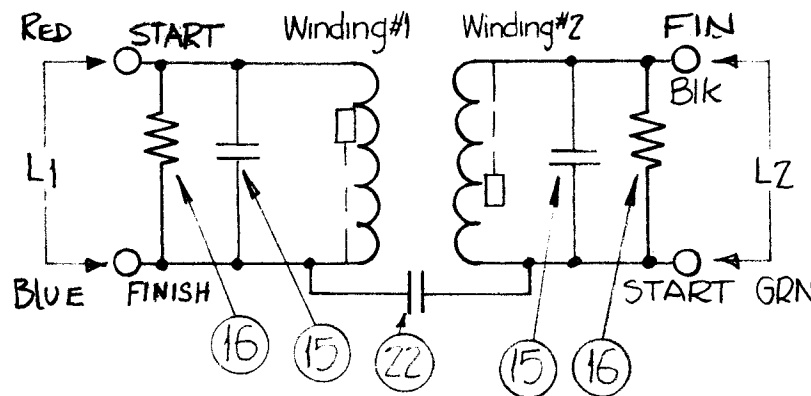
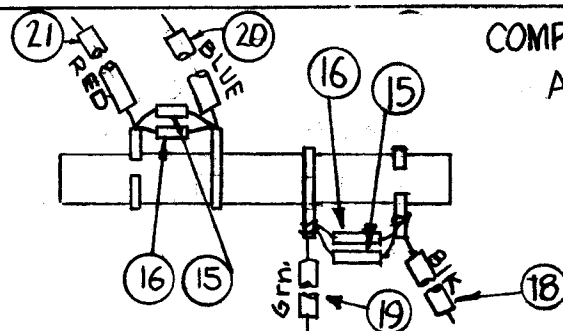
WINDING DATA

1. Assemble ring terminals on form as shown and stake with GL-104-2.
2. Wind coils as specified, staking and coating with GL-104-2
3. Bake until hard for 1/2 hour at 215°F.
4. Test and assemble as shown.

WINDING DETAIL



COMPONENT ASSY.



TEST DATA (W/OUT CORE)

$$L_1 L_2 = 2 \mu h \pm 10\%$$

$$Q = 55 \text{ or Greater}$$

$$\text{FREQ} = 7.9 \text{ MCS}$$

USE Boonton Radio Corp. Q Meter Model 160A or Equivalent.

1	ZZ	CM15B050M	CAPACITOR, FIXED	
X	Z1	PX-104-3-034	INSULATION, SLEEVING	RED
X	Z0	↑ -6 ↓	↑	BLUE
X	Z9	↓ -4 ↓	↑	GREEN
X	Z8	PX-104-1-034	INSULATION, SLEEVING	BLACK
1	Z7	TE-104-3	LUG	
Z	Z6	RCZ0GF472K	RESISTOR, FIXED	
Z	Z5	CM15CZ70J	CAPACITOR, FIXED	
X	Z4	WL-100-7	WIRE, BUSS-BAR	
Z	Z3	NTH0348BN6	NUT, HEX	
Z	Z2	CI-116-5	CORE TUNING	RED
X	Z1	BS-100	SOLDER, SOFT	
Z	Z0	NTH083ZBN10	NUT, HEX	
Z	Z9	LW108MRN	LOCKWASHER	
4	Z8	TE-153-2	TERMINAL RING	
X	Z7	GL-104-2	INSULEX	
	Z6	DELETED		
X	Z5	WI-123-28	WIRE, ENAMELLED	
Z	Z4	SM-140-2	BUSHING, COIL MOUNTING	
1	Z3	CF-122-1.93	COIL FORM 1/4" O.D.	
1	Z2	PX-585-1	TERMINAL BOARD	
1	Z1	A-1950-1	CAN ASSY	

REQ.	ITEM	PART NO.	DESCRIPTION	SYMBOL
THE TECHNICAL MATERIEL CORP. MAMARONECK, NEW YORK				
STOCK SIZE				
TT-117 TRANSFORMER ASSY				
14.75-16.75 MC TRANSFORMER				
MATERIAL				
TYPE & TEMPER		HEAT TREAT. SPEC.	DRAWN	CHECKER
			A.R.F.	file
FINISH & SPEC. NO.		ELEC. DES. APP.	MECH. DES. APP.	FINAL APPROVAL
				A-1994 F

F	Q WAS 90 ON TEST DATA CHART	9-19-61	5578	EA	gcb	gcb
E	ITEM 13 WAS NTH0348BN6	7-11-61	5227	EDL	gcb	gcb
D	Pictorials Clarified Winding Data Clarified Component Assy Added Item 6 GL-103 Deleted, I	3/8/61	4343	RLI	gcb	gcb
C	ITEM 12 WAS CI-116-6	12-21-60	3793	M.A.F.	gcb	gcb
B	ITEM 3 WAS CF-122-2.0 On Schematic, L1, Blue, END + Red Start Reversed	11-28-60	3604	Dgm	gcb	gcb
A	2- ITEM 22 WAS CM15C050J 1- ITEM 14 WAS WI-100-7	10-31-60	3350	MJ	gcb	gcb
SYM	DESCRIPTION	DATE	CH. NO.	DRAFTS	CHECKER	ENG. APP.

UNLESS OTHERWISE SPECIFIED:
DIMENSIONS ARE IN INCHES
TOLERANCES ON FRACTIONS ± 1/64 DECIMALS ± .005 ANGLES ± 1/2°

SCALE: Do Not Scale
MAXIMUM ALLOWABLE TOLERANCES HAVE BEEN DETERMINED AND ANY DEVIATIONS WILL BE CAUSE FOR REJECTION.
REMOVE ALL BURRS AND SHARP EDGES

3	CHG		I.F.	10-15-60
REQ. PER UNIT	MODEL	SECTION	ASSY. NO.	DATE
				USED ON