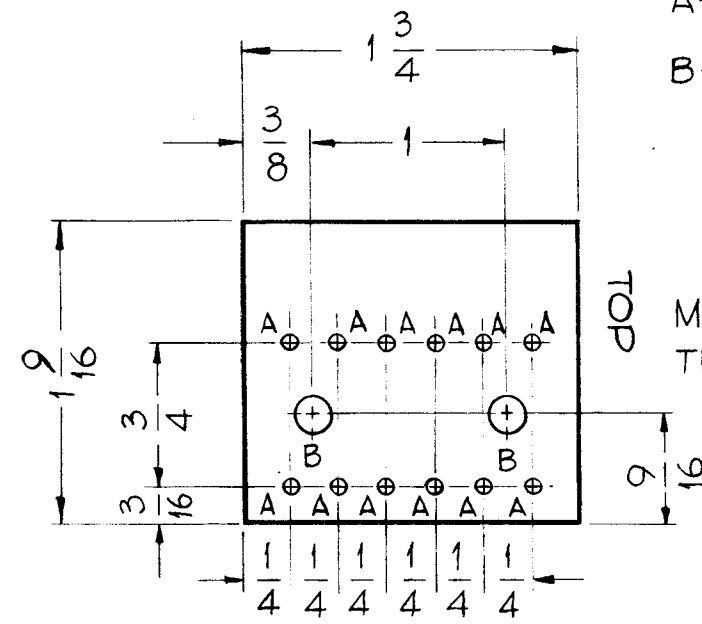


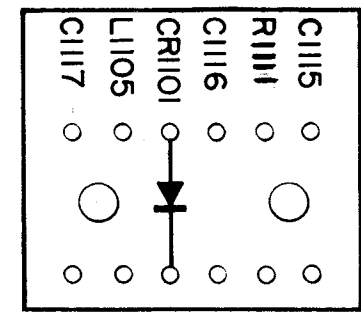
A-1993 B



HOLES ~  
 A ~ 48 Dr (.076) 12 Req.  
 B ~ .189 DIA. 2 Req.

MATERIAL ~ XXXP, 1/16 THICK PHENOLIC

MACHINING, A-1993-1

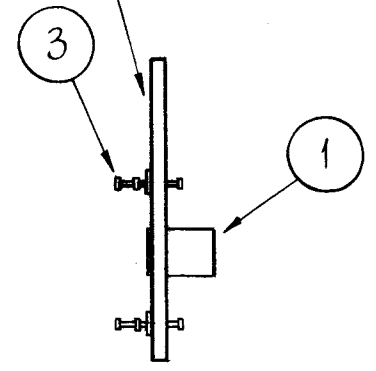


ALL LETTERING 1/8 HIGH BLACK GOTHIC.

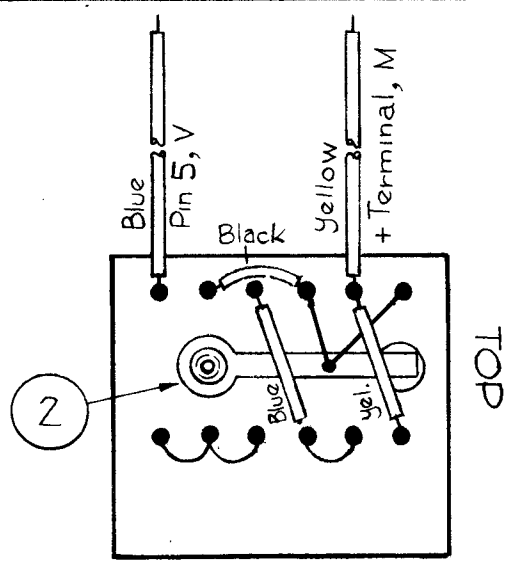
MARKING PROCESS: AS PER T M C SPECIFICATION S-727

LETTERING, A-1993-2

LETTER ON THIS SIDE



SUB-ASS'Y, A-1993-3



(BOTTOM VIEW SHOWN)  
 FINAL ASS'Y, A-1993-4

X	12	BS100	SOLDER, SOFT	
1	11	CL140-1	CHOKE, R.F.	L1105
1	10	IN303	DIODE	CR1101
3	9	CC100-16	CAPACITOR, DISC	C1115, C1116, C1117
1	8	RC20GF184K	RESISTOR, FIXED CARBON	R1111
X	7	PX104-6-.022	INSULATION, SLEEVING	Blue
X	6	PX104-2-.022	INSULATION, SLEEVING	Yellow
X	5	PX104-1-.022	INSULATION, SLEEVING	Black
X	4	WL100-8	WIRE, BUSS BAR, TINNED	
12	3	TE168-4B	TERMINAL, MINATURE	
2	2	TE116-3	SOLDER LUG	
2	1	TE108-2	STANDOFF, RIVET TYPE	

REQ.	ITEM	PART NO.	DESCRIPTION	SYMBOL
THE TECHNICAL MATERIEL CORP. MAMARONECK, NEW YORK				
ASS'Y, MF METER BOARD				
MATERIAL				
			J.C. Biele	
TYPE & TEMPER		HEAT TREAT. SPEC.	DRAWN	CHECKER
			G.R. F.	
FINISH & SPEC. NO.		ELEC. DES. APP.	MECH. DES. APP.	
				A-1993 B

SYM	DESCRIPTION	DATE	CH. NO.	DRAFTS	CHECKER	ENG. APP.
B	"A" Holes Were .078 DIA. (MACHINING A-1993-1)	11/28/60	3585	DM	JCB	
A	ITEM 9 WAS CC-100-24	11-8-60	3414	W.F.	JCB	

UNLESS OTHERWISE SPECIFIED:  
 DIMENSIONS ARE IN INCHES  
 TOLERANCES ON FRACTIONS ± 1/64 DECIMALS ± .005 ANGLES ± 1/2°

SCALE: FULL, DO NOT SCALE

MAXIMUM ALLOWABLE TOLERANCES HAVE BEEN DETERMINED AND ANY DEVIATIONS WILL BE CAUSE FOR REJECTION. REMOVE ALL BURRS AND SHARP EDGES

1	CHG-1	10-15-60
REQ. PER UNIT	MODEL	SECTION
		ASS'Y. NO.
		DATE
USED ON		