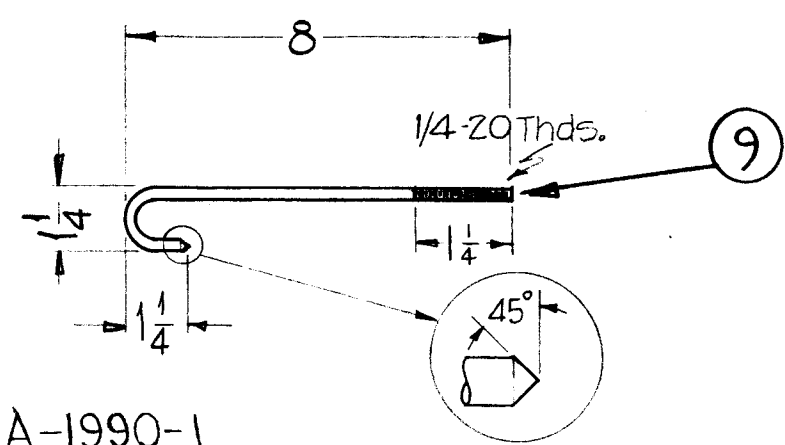
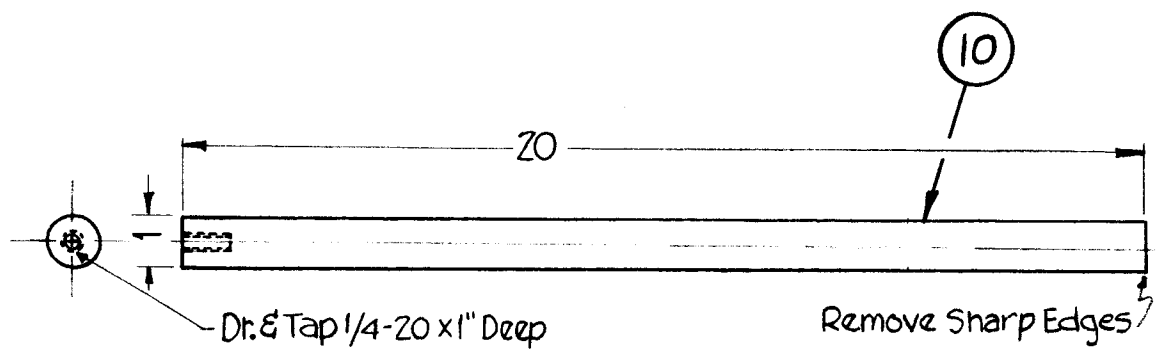


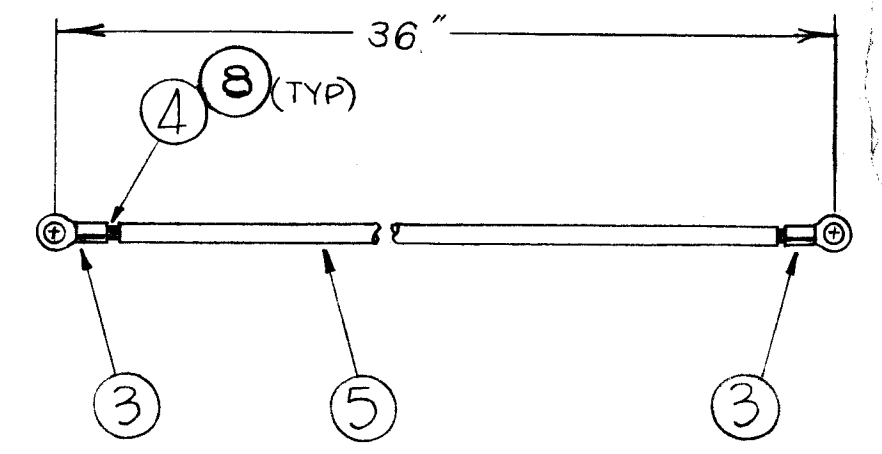
A-1990 G



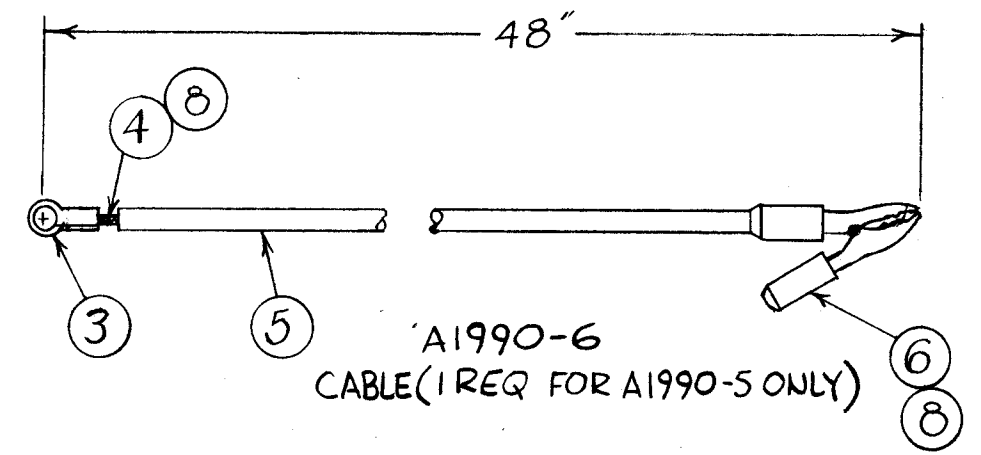
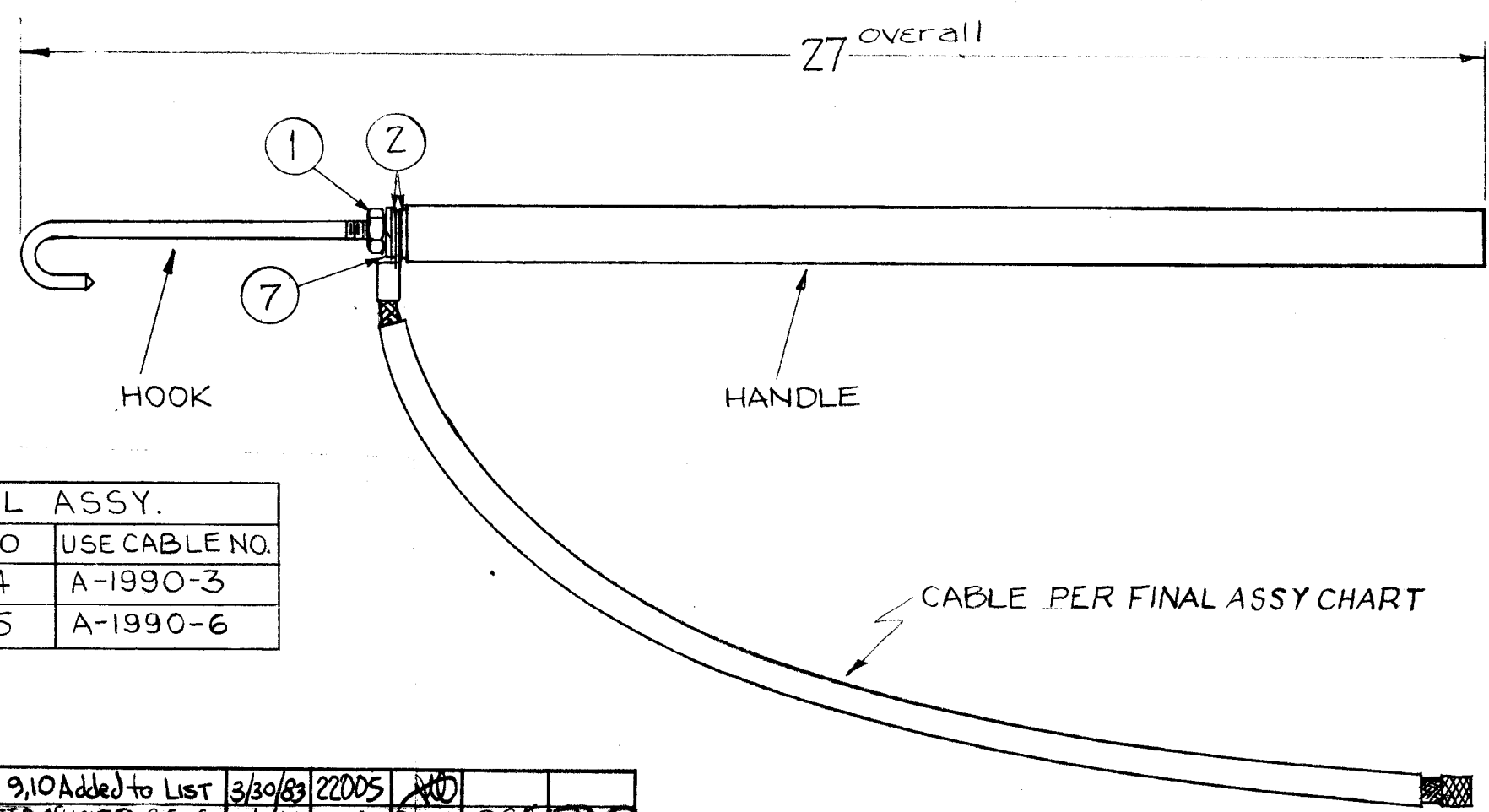
A-1990-1
HOOK ~ Material ~ Brass; Finish ~ Chrome
T.H.D.s. .0005
T.H.D.s. .0002



A-1990-2
HANDLE ~ Material ~ Black ACRYLIC



A-1990-3
CABLE ~ (1 REQ. FOR A-1990-4 ONLY)



A-1990-6
CABLE (1 REQ FOR A-1990-5 ONLY)

FINAL ASSY.	
ASSY. NO	USE CABLE NO.
A-1990-4	A-1990-3
A-1990-5	A-1990-6

1	10	A-1990-2	HANDLE, BLACK ACRYLIC	
1	9	A-1990-1	HOOK, BRASS	
X	8	BS-100	SOLDER, TIN ALLOY	
1	7	LWS 25 MRN	LOCK WASHER, SPLIT	
	6	CU-146	CLIP, ELECTRICAL	
	5	PX-100-1-375	INSULATION SLEEVING	
	4	WL-103-6	BRAID, WIRE, FLAT	
	3	TE-158-31136	TERMINAL, LUG	
2	2	FW25HBN	WASHER, FLAT	
1	1	NTH25ZOBNI4	NUT, HEX	

SEE A-1990-3 & A-1990-6 FOR QTY.

ISSUE	ITEM	CHANGED FROM	DATE	CH. NO.	DRAFTS	CHECKER	ENG. APP.
G		Item 9,10 Added to List	3/30/63	22005			
F		ADD TO CALLOUT TO 3E-G	11/3/66	17092	RME		
E	1	ITEMS 7 & 8 ADDED	3-31-64	11144	WJB		
D	1	SEE EMN #10900	2-14-64	10900	A.M	TR	
C	1	ADDED PART NUMBERS	3-20-63	8572	RC		
B	2	HANDLE WAS PHENOLIC, XXXP	12-29-62	7941			
A	1	ON HOOK, THREAD LENGTH WAS 2					
		Item 2 Was FW25MRN	2-12-62	6324	EG		

REQ. PER UNIT	MODEL	PROJECT NO.	ASSY. NO.	DATE
1	GPT-200K	AP-111	A-1990-5	12-63
1	GPT-200K	AP-109	A-1990-5	12-63
1	GPT-200K	AX-394	A-1990-5	12-63
1	GPT-10K	AX-236	A-1990-4	2-12-62
2	GPT-40K	AP-103, AX-238	A-1990-4	10-4-60

TOLERANCES: DEC. DIM. ±, FRAC. DIM. ±, ANGULAR DIM. ±

SCALE: MAXIMUM ALLOWABLE TOLERANCES HAVE BEEN DETERMINED AND ANY DEVIATIONS WILL BE CAUSE FOR REJECTION. REMOVE ALL BURRS AND SHARP EDGES

REQ. ITEM	PART NO.	DESCRIPTION	SYMBOL
STOCK SIZE			
MATERIAL			
TYPE & TEMPER HEAT TREAT. SPEC.			
FINISH & SPEC. NO.			
THE TECHNICAL MATERIEL CORP. MAMARONECK, NEW YORK			
SHORTING STICK ASSY.			
DRAWN	CHECKED	FINAL APPROVAL	
		A-1990 G	