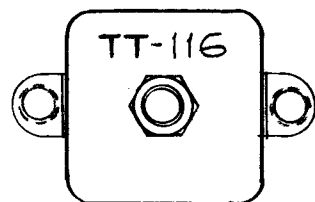
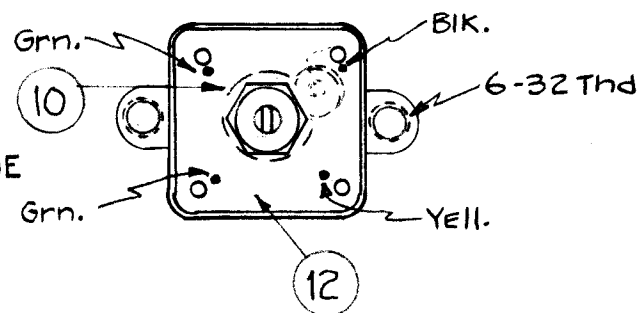
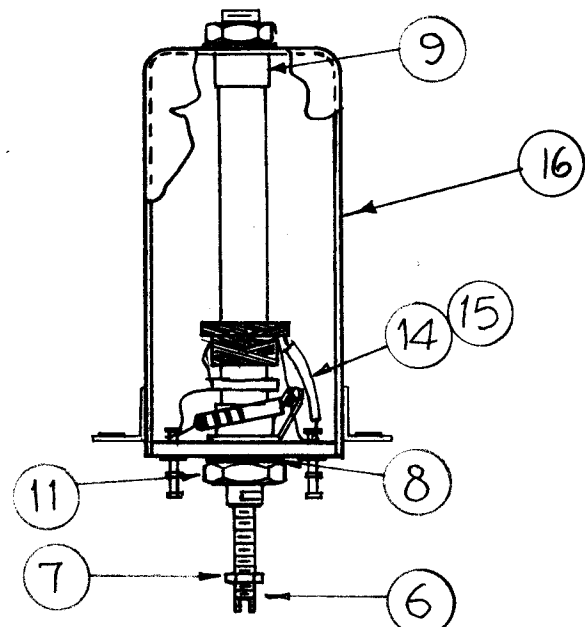


A-1980 C

STAMP CAN AS SHOWN 1/8" HIGH BLACK GOTHIC.
NOTE ~ STAMP TMC INSIGNIA & APPROVAL
ON SIDE OF CAN.



CEMENT COIL FORM TO BUSHING WITH GL-103.



COLOR CODE
TERMINAL
BOARD AS

WINDING MACHINE DATA

PRIMARY L ₁		PRIMARY L ₂	
Cam Gear	49	Cam Gear	105
Driver Gear	95	Driver Gear	69
Cam	.125	Cam	.250

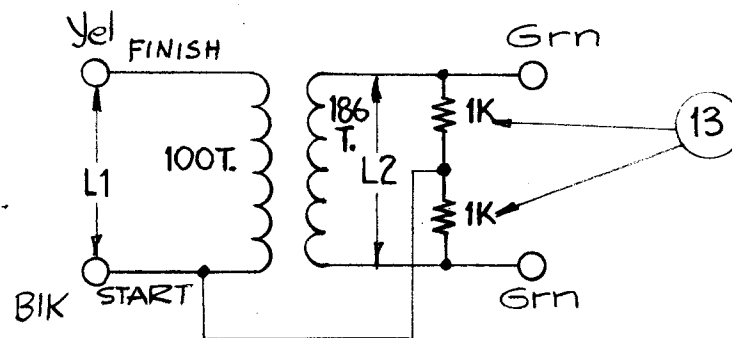
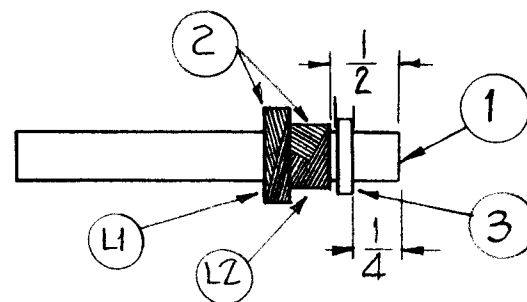
WINDING DATA

1. Start secondary coil (L₂) 1/2" from end of form.
2. End winding L₂ at 186 turns.
3. Keep all leads approximately 3" long.
4. Start primary coil about 1" from end of form.
5. End winding (L₁) at 100 turns.
6. Push primary winding L₁ against secondary winding (L₂)
7. Stake leads to coil form with item 4.
8. Bake for 1/2 hour at 215° F.
9. Immediately apply coating of GL-104-2 item 5.
10. Bake hard for 1/2 hour at 215° F.
11. Test according to test data at right.
12. Assemble as shown at left.

TEST DATA W/O CORE

PRIMARY L ₁	SECONDARY L ₂
L = 90 uhy ±10%	L = 205 uhy ±5%
Q = 25 or Greater	Q = 35 or Greater
F = 790 KC	F = 790 KC

USE BOONTON RADIO CORP Q METER MODEL 160A
OR EQUIVALENT.



1	16	A-1950-1	CAN ASS'Y.	
X	15	PX-104-2-.022	Sleeving, Insulation	Yellow
X	14	WL-100-8	Wire Buss-Bar	
2	13	RC20GF102K	Resistor, Fixed	
1	12	PX-585-1	Terminal Board	
2	11	NTH0832BN8	Nut Hex.	
1	10	TE-104-3	Ground Lug	
2	9	SM-140-2	Bushing, Coil Mtg.	
2	8	LW108MRN	Lockwasher, Int.	
1	7	NTH0348BN6	Nut, Hex.	
1	6	CI-116-6	Core Tuning	Yellow
X	5	GL-104-2	Insulex, U85	
X	4	GL-103	Cement Duco	
1	3	TE-181-2	Terminal, COLLAR	
X	2	WI-107-17	Magnet Wire, DSC (Size 36)	
1	1	CF-122-1-93	Coil Form .250 O.D.	
REQ. ITEM	PART NO.		DESCRIPTION	SYMBOL
THE TECHNICAL MATERIEL CORP. MAMARONECK, NEW YORK				
STOCK SIZE			TT-116 TRANSFORMER ASS'Y.	
MATERIAL			250 KC INPUT TRANSFORMER	
TYPE & TEMPER HEAT TREAT. SPEC.			DRAWN	CHECKED
FINISH & SPEC. NO.			ELEC. DES. APP.	MECH. DES. APP.

C	3	ON TEST DATA L2 L WAS 200 uhy ± 5	5-3-61	4798	MAF	JCS	
	2	ON TEST DATA L1 L WAS 90 uhy ± 10					
	1	ON WINDING DATA #1 1/2" WAS 3/8"					
	4	(Ledger) Item 1 WAS CF-122-2-0					
B	3	TEST DATA (1) WAS .09 mhy on secondary of SS ADDED	12				
	2	(Victoria) Dim 1/2 was 3/8	21	3791	RA	JCS	
	1	(Winding Data) Item 2 cleared (Winding Data) Item 2 1/4 pie, & Item 3 1/8 pie Deleted	20				
A	3	ITEM 16 ADDED	11-8-60	3423	MAF	JCS	
	2	ITEM 8 WAS LW108MRN					
	1	ITEM 3 WAS TE-153-2					
ISSUE ITEM	CHANGED FROM		DATE	CH. NO.	DRAFTS	CHECKER	ENG. APP.
TOLERANCES			SCALE:				
DEC. DIM. ±			MAXIMUM ALLOWABLE TOLERANCES HAVE BEEN DETERMINED AND ANY DEVIATIONS WILL BE CAUSE FOR REJECTION.				
FRAC. DIM. ±			REMOVE ALL BURRS AND SHARP EDGES				
ANGULAR DIM. ±							
1	CHG-1	MF/RF					9-23-60
REQ. PER UNIT	MODEL	PROJECT NO.	ASS'Y. NO.	DATE			
USED ON							